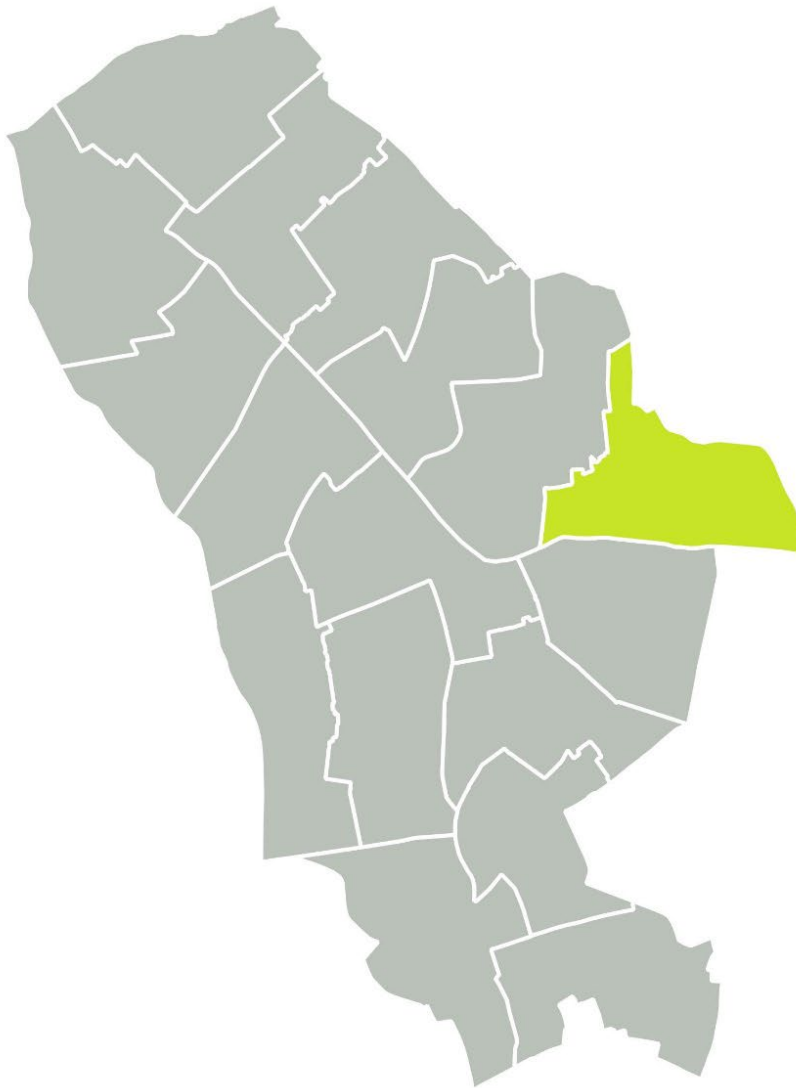




Mildmay

Community Plan – February 2023



Introduction

Thank you for taking the time to look at our Community Plan for Mildmay.

The Community Plan gives details of different schemes that, as your local councillors, we want to prioritise because we believe they will improve our area and enhance the lives of the people who live here.

Some of these improvement schemes have recently been completed, others are in the process of being implemented and some relate to projects we hope to see carried out in the future subject to funding becoming available.

As you can see, the projects in this Community Plan are wide-ranging. They include improvements to our leisure and other community facilities, initiatives that make our parks, streets and green spaces safer and more welcoming and schemes that make travel easier and more pleasant.

We work with local groups like tenants and residents associations, schools, neighbourhood watch groups, gardening clubs, community centres and local special interest organisations of all kinds to come up with the improvement priorities that are set out in this Community Plan. If you have ideas for projects you would like to see here, then get in touch with us by sending us an email or by coming along to one of our regular ward partnership meetings.

The money to pay for the projects described in this Community Plan comes for the most part from financial contributions that developers are required to make when they build in our area.

Contents

The projects are split into three sections:

- Awaiting funding – projects that councillors are minded to support depending on availability of funds but have not yet made any allocations towards.
- Being Implemented – projects that have been funded and are ongoing.
- Completed – projects that were previously funded and now completed.

Details of potential, current and past projects are also available to view on our [interactive map](#).

Funding Allocations

Once projects have received funds they are listed as being implemented and then completed. Projects are primarily funded through contributions received from two different mechanisms secured when planning permissions are granted – Section 106 contributions or from the Community Infrastructure Levy. Please contact S106@islington.gov.uk for further information on the specific developments the funds originated from, if required.

How To Get Involved

Contact your [councillor](#) to propose a new project or attend a ward partnership meeting.

For more information about this community plan please contact us on either CIL@Islington.gov.uk or S106@Islington.gov.uk

Vision Statement From Mildmay Ward Councillors

Mildmay Ward is a diverse community, home to people from different backgrounds and income levels. A third of the population lives in poverty, alongside those in the top 1%. The diversity of our community is one of its strengths but too many residents are excluded from the economic opportunities on offer.

As Mildmay's councillors we want to enable everyone to take part in the social, cultural and economic wealth of the area. We will prioritise investment to keep our young people safe and able to access exciting activities, education and training that will prepare them to access the full cultural and economic benefits the city can offer. In order to enable the community to support one another and enjoy their leisure time we will invest in organisations, buildings and green spaces. The focus will be on vulnerable and socially isolated residents.

All residents should feel that community assets are shared. We will encourage everyone to use Newington Green, Mildmay Library, the Community Centre, playgrounds and green spaces. Research is clear that spending time outside is crucial for good mental and physical health so we will work to promote walking and cycling in our ward at every opportunity. Over the last few years we have been successful in encouraging independent businesses to open up in the area. We will continue to work with local traders, making sure that businesses are serving the needs of all of Mildmay's residents.

Mildmay Ward is home to a large number of families who live in overcrowded and cramped conditions. The supply of new high-quality homes at genuinely affordable rents must be a priority so that everyone can benefit from decent accommodation. Approximately a third of Mildmay's residents live in private rented accommodation and we will work with the residents to make sure that the accommodation is fit for habitation and that they feel part of the community no matter how short their time in the area.

We are lucky to have many thriving civic society groups and charities working in our area. We can achieve more together than we ever can alone - especially at a time when the Conservative government continues to cut public services. We will work with our partners in the NHS, the Police and local groups and always be open with residents about our plans.

Newington Green is an area with a rich history of radical politics. The area was home to the English Dissenters in the late 17th Century and 'the godmother of feminism' Mary Wollstonecraft. This local history of the struggle for freedom from oppression is an important part of the character of the area and we will celebrate and preserve it for the benefit future generations. This means supporting campaigns such as Mary on the Green and working to open up of the first Reform Jewish cemetery on Kingsbury Road.

Councillors Jenny Kay, Santiago Bell-Bradford and Angelo Weekes

Awaiting Funding

Affordable Housing

Athenaeum Court

This project will build extra social housing at Athenaeum Court in Mildmay. It will also install cycle storage and will open up green spaces for residents in the area.

Community Facilities

Mildmay Community Centre Pram Parking

This project will provide enclosed pram parking outside the Mildmay Community Centre building. It will help users of the community centre to store prams safely and securely, rather than taking up space inside the centre, where they can undermine fire safety requirements.

Playspace

St Paul's Shrubbery Play Area Improvements

Following the completion of improvements to St Paul's Shrubbery open space, this project will focus on improving play opportunities for older children.

School Facilities

Reducing Car Idling in Mildmay

This project will focus primarily on car-idling in Mildmay around schools. It will involve working with the council and local schools to encourage anti-idling measures and encouraging residents to be aware of pollution affects.

Open Space

New River Walk/Petherton Road Improvements

This scheme will improve the public realm at the New River Walk and Petherton Road area of Mildmay. It would involve the refurbishment of the path and benches in the area, improved planting as well as measures to reduce and discourage dog fouling. This will improve public amenity and will make a clear link between the rest of the New River Walk and the area by Canonbury Station.

Being Implemented

Affordable Housing

Hathersage Court and Besant Court Estates

As part of the new affordable housing development on this Estate (45 new homes) a number of public realm and facilities improvements for existing residents will be delivered. This includes a new playground and block improvements to Hathersage and Besant Court.

Kerridge Court and Spring Gardens Estates

Islington is working towards tackling the nationwide housing crisis, including building new council homes across in Mildmay. Housing projects are currently being scoped and the process has involved looking at building new and making improvements to the existing homes, potentially including the landscaping to Kerridge Court, Burder Close and 5-39 Boleyn Road. Housing needs of local residents will be prioritised as the schemes are being delivered.

Community Facilities

Community Events on Newington Green

This scheme aims to encourage and help with funding for more events on Newington Green to compliment Newington Green Action Group's Carols and Jazz on the Green. Mildmay Councillors have for a number of years supported the local Newington Green Alliance and Garden Classroom through the Local Initiatives Fund.

Playspace

Newington Green Playground Improvements

Allocations made:

- Local CIL (£65,343)

Following a period of consultation with the local community, this scheme proposes a refurbishment and resurfacing of the Newington Green Playground, to make it accessible and inviting to wider age ranges.

St Jude's Playground and Open Space Improvements

Allocations made:

- S106 (£4,000)

The initial allocation is for design and feasibility, and engagement around the possible works. This project will improve the play area and open space at St Jude's. The final project will re-landscape the area covered with dead plants, removing shrubs and placing more open, low planting behind the fence. There is also potential for a community gardening space or allotments.

King Henry's Adventure Playground

Allocations made:

- Local CIL (£109,624)
- S106 (£15,376)

This scheme will deliver improvements to the facilities at the King Henry's Adventure Playground. Improvements will include: replacement of the boiler, which has reached the end of its life; installation of new floodlights at the playground; and, replacement of the fencing around the site. The project will improve outcomes for children using the playground, allowing them to play freely outdoors through the winter, when it is dark after school, by providing outdoor lighting. It will improve security and hygiene by ensuring hot water supply for handwashing through replacement of the boiler. The replacement of the fencing will also improve the security of the site.

Estate Improvements

Mildmay Estates' Improvements

Allocations made:

- Local CIL (£161,750)

This project is to provide a range of improvements across Mildmay estates, including Wells Court, Queen Margaret's Grove, Seaforth Crescent, New River Court, 59 Poets Road, John Kennedy Court, Blair Close, Sinclair Court, Mildmay Street, Tudor Court, Lexfield House, Highbury Estate, and Mayville Estate. The improvements will vary in scale and scope, and range from removing hostile bollards, to improving signage, providing cycling and improving waste storage and recycling facilities, enhancing green spaces, to public realm improvements.

Transport and Public Realm

Mildmay's Liveable Neighbourhoods

Mildmay Ward Councillors have started consulting on the £1M Mildmay Liveable Neighbourhood. A Liveable Neighbourhood provides quiet, pleasant streets with less traffic where you can safely and comfortably walk, cycle, scoot, and use buggies and wheelchairs. The area will be greener and healthier, with places to sit and rest, enjoy your street and meet your neighbours.

Completed

Community Facilities

Room to Heal Gardening Project

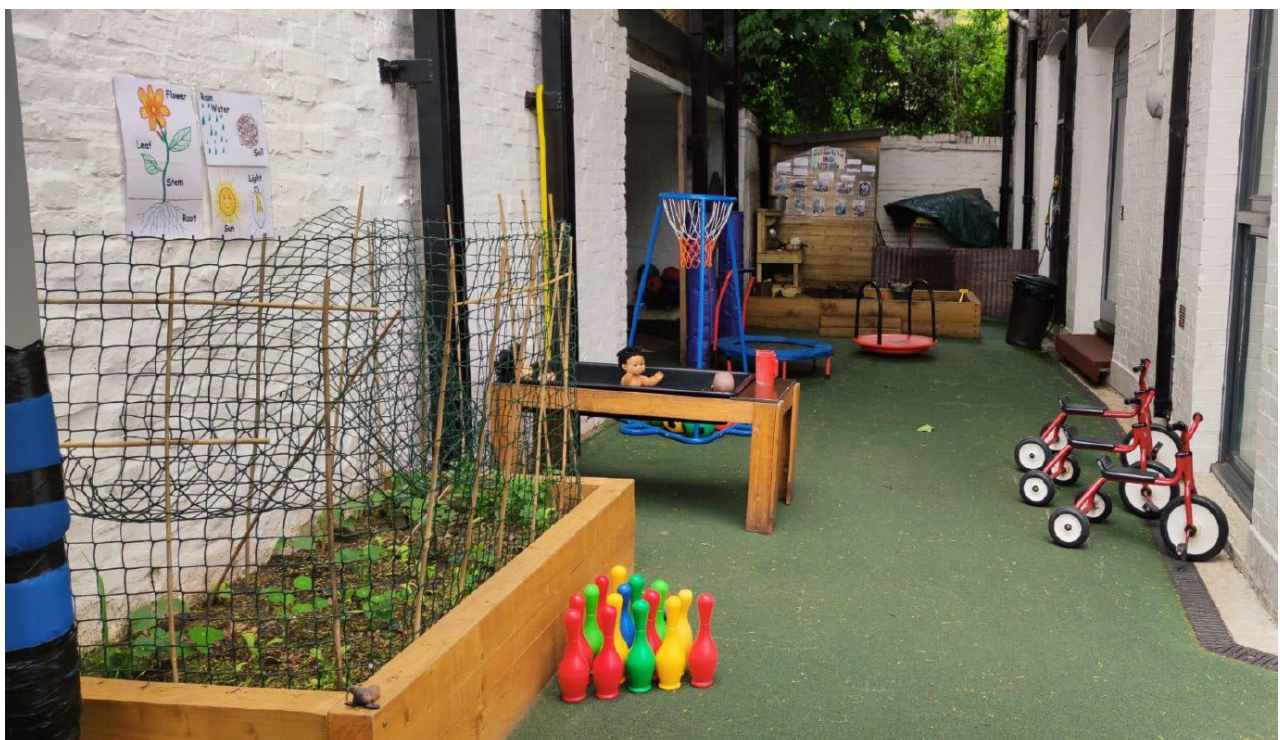
Room to Heal is a charity based in the Mildmay Community Centre. This project funded a therapeutic gardening and social integration programme for asylum seekers and refugees. Project completed in 2016.

The Factory Children's Centre

Allocations made:

- Local CIL (£15,000)
- S106 (£3,630)

This project delivered improvements to the outside spaces at the Children's Centre. The centre has many children who live in homes without gardens and this project gave them the opportunity to experience and appreciate nature through a planting scheme, a mural, a music wall and a mud kitchen. Project completed in 2019.



Newington Green Decking

This project replaced the decking materials around the park building in Newington Green Gardens which was at the end of its life. This scheme was also partially funded by the Local Initiatives Fund (LIF). It has had a positive impact on park users and on the financial viability of the park café. The project was completed in 2019.



Newington Green Drinking Fountain

Allocations made:

- S106 (£5,335)

This project involved the installation and maintenance of a water bottle re-fill station in Newington Green. It encouraged users of the park to re-fill reusable water bottles, rather than buying water in single-use plastic bottles.

Newington Green Traders' Fund

This scheme established a traders fund to improve the shopping area and the look and feel of high street. This scheme was funded by the Local Initiatives Fund (LIF).

Estate Improvements

Haliday House Communal Garden Improvement

Allocations made:

- Local CIL (£1,775)

This scheme is to further improve the communal garden. The TRA are proposing that a water supply is made available to them with the installation of an external water tap, which will enable the TRA, & members of the future gardening club to care for plants and shrubs. They also seek funds to purchase an additional heavy-duty (cast iron) bench.

Mayville Estate

This scheme improved the biodiversity on the Mayville Estate with the addition of planters and lighting around the Mildmay Community Centre. The red ball pitch on the Estate was in disrepair, so a new ball pitch has been created for children under 12 nearby. Funding was secured by Mildmay ward councillors through the Housing department's environmental improvements budget, and from Arsenal FC for the new ball pitch.

Mildmay Ward Estate Cycle Parking

Allocations made:

- Local CIL (£3,575)
- S106 (£6,149)

This scheme provided secure cycle parking at several housing Estates in Mildmay. It included the installation of cycle hangers at Tudor Court, sheltered court at Kerridge Court, as well as 8 secure cycle parking spaces at Haliday House. The project helped residents to store cycles safely, rather than taking up space inside properties or being left in communal areas of buildings, where they undermined fire safety requirements. The availability of secure cycle storage encouraged cycle use, with personal, environmental, health and economic benefits.



Mildmay Secure Cycle Parking

This project delivered secure cycle parking on Mildmay Grover South, Beresford Road, Mildmay Street, Mildmay Grove North, Poets Road, and Grosvenor Avenue.

Open Space

Replacement Trees on Mildmay Grove North

This project will plant replacement trees on Mildmay Grove North, in line with the Council's tree strategy.

Area on Newington Green Near Ferntower Road

Allocations made:

- Local CIL (£45,000)

This scheme created a green corridor, improving the public realm, making the area more attractive, increasing residential amenity and reducing anti-social behaviour. The green enclave allows the residents to enjoy a minute of rest by the tranquil pathway.



St Paul's Shrubbery Improvements

Allocations made:

- S106 (£85,000)

The scheme delivered improvements to the St Paul's Shrubbery open space including enhancing the play space, increasing accessibility, landscaping and additional seating. The project was supported by the Children's Ward Partnership.

Transport and Public Realm

Newington Green Road Stop-and-Shop Facility

This scheme explored the possibility of stop-and-shop parking on Newington Green Road outside the fruit and vegetable and organic shops.

Wallace Road/Grosvenor Avenue Improvement Works

Allocations made:

- Local CIL (£20,795)
- S106 (£46,205)

This scheme improved the existing public realm at the junction of Grosvenor Avenue and Wallace Road. It created an attractive plaza space for the benefit of the local community, which encourages public use for meeting and relaxing outside of Canonbury Station. Project completed in 2019. The improvement works were celebrated with the local community during Chinese New Year.



Sports and Recreation

Kerridge Court Estate Ball Pitch

Allocations made:

- S106 (£5,000)

This scheme delivered a new multi-use games area at Kerridge Court Estate. The previous ball court at the centre of the Estate was dilapidated and its design was unsuitable.