

A unique opportunity to revitalise Mildmay Library. We want your views!

What do we want your views on?

Islington Council are working with architecture practice Public Works to upgrade and expand the offer at Mildmay Library. This is your library and we want to hear from you how to make it better.

We want to make improvements to the library and also create spaces where new activities and services can be run for people of all ages. This will include activities to support health & wellbeing, learning, children and youth activities and services that help local people with challenges they face.

Many of our libraries offer a number of activities and services already including: Baby Bounce, storytelling, poetry readings, and they also offer space for other services like music services and youth services. We want to do more of this and with your help make our libraries the centre of our communities providing access to support from a different range of services, things like financial advice to help finding childcare. We want our libraries to be vibrant spaces offering a range of activities, from music and comedy to support for young people - in a way that enables them to continue to offer quiet space and time to work and read.

To get this right we need your views.

In order to provide more services and activities from the library, we will need to make some physical changes to the space. The library area itself will be redesigned with new layouts, shelving and study spaces alongside broader changes to the whole building to enable a wide range of services and partners to use the space.

We want to ensure that this exciting project reflects the needs of local people and we hope as many of you as possible will share your views and ideas with us.

Join our engagement sessions

This is our first engagement session where we are asking residents and groups how we should revitalise the Mildmay Library. Residents will be asked to give feedback at various points throughout the design process, and the design development will be informed by the feedback we receive. Currently we are at stage 1: developing initial concept ideas.

Stage 1 engagement session

We are holding a drop-in engagement event at the Mildmay Library on the 22nd March 2022 to gather initial feedback. Drop-in anytime between 6pm and 8pm.

What to expect:

- Conversations with the architects, local Councillors and library staff
- You will be invited to share their views, ideas and leave feedback
- There will be a tour of the building at 6.30pm and 7.30pm



An online session will be held as part of the 'Mildmay Ward Partnership Meeting' for those that cannot, or prefer not to, attend in-person. This session will be held on the **23rd March 2022** from 7pm-8pm.

Use the meeting link:

<https://weareislington.zoom.us/j/81612692239>

or scan the QR code

What can you do?

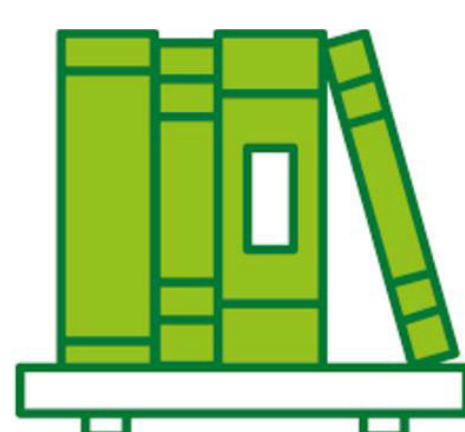
Look at our initial ideas so far and give your feedback. You can fill in the feedback form in-person or online at:

www.islington.gov.uk/MildmayLibrary

We will collate everything and produce a report to show the findings. Please speak to the architects either in person at the Mildmay Library on **15th, 21st and 22nd of March**, during the online event on **23rd March 2022** or by emailing tom@publicworksgroup.net

What next?

Your comments will be collected and used to help guide the next stage of design. We will be holding further engagement sessions before we look towards submitting a formal planning application. This means we can incorporate your ideas, show you how we have done this and ask for further feedback. The date of the future session is to be confirmed, but it will be publicised well in advance of the event.



Libraries
ReadLearnConnect



A unique opportunity to revitalise Mildmay Library. What else should happen here at the Library?

At Mildmay, like Islington's other Libraries, we offer a range of activities for adults and children including Baby Bounce, storytelling sessions, reading groups and holiday activities.

Through Islington's new **Fairer Together** programme, we want to deliver more services from the library to help people access help and support post-Covid, create opportunities for the community to get together and help to tackle inequality in our borough.

We want to get your views on what you would like to see happening at Mildmay Library and the services you would like to access here. These are some ideas about the sorts of additional things that could be on offer.

What do we want to know?

- **Which of these services feel most important to you?**
(stick a sticker on it)
- **What have we missed?**
(write it on a post it note)
- **What other community activities could take place in an improved library space?**
(write it on a post it note)

Advice and support for families including parenting and stay and play

Employment support and help into work

Support on income and benefits

Learning activities for children and adults

Space for community groups, eg sewing groups, exercise classes

Music, cultural and social events

Activities and advice for young people

Advice and support on housing issues

**What have we missed?
(write it here)**

A unique opportunity to revitalise Mildmay Library.

How do you use the Mildmay Library now?

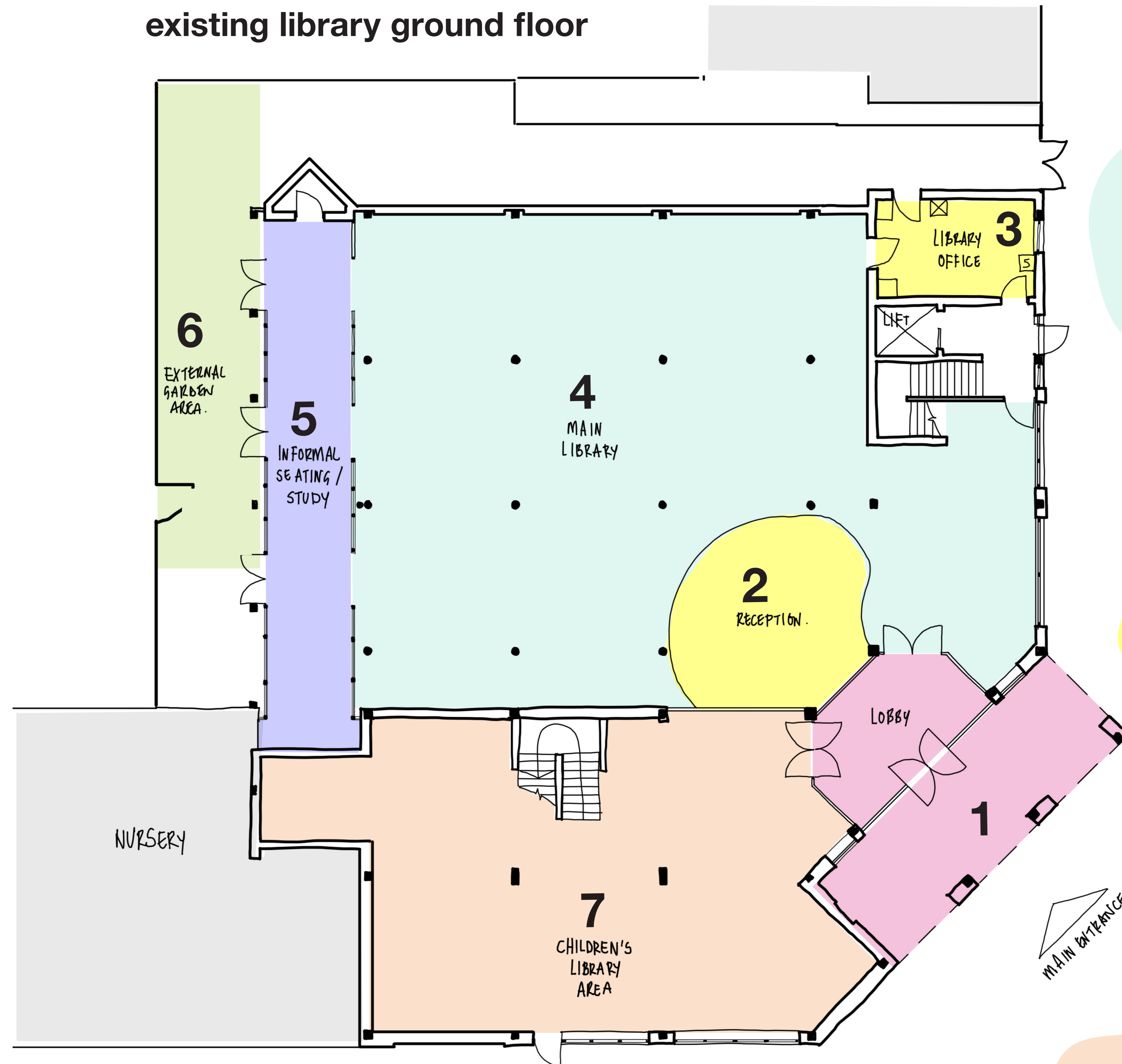
In order to support additional services to be delivered at Mildmay Library some refurbishments have to be made to the space.

The space in the existing library is not used efficiently. There are some key opportunities internally to maximise the use of space and add more value to the library by encouraging complimentary functions.

What do we want to know?

- What parts of the Mildmay Library space do you enjoy the most and why?
- What parts do you think need improvement and why?

existing library ground floor

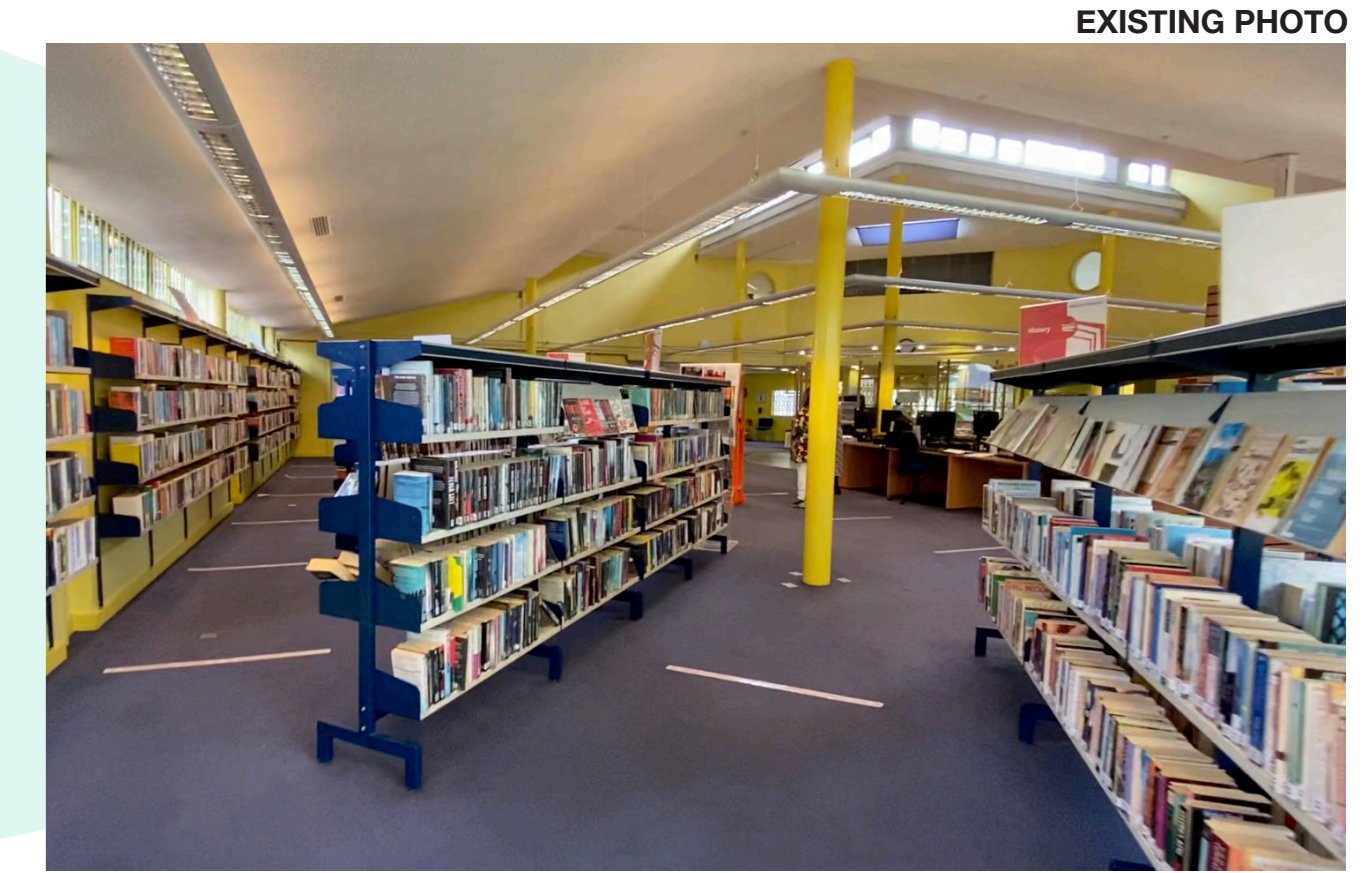


3. Library Office

What: The main library office is currently on the first floor. We could move the library office onto ground floor.
Why: This will allow the office to be linked to the reception and help with general operations.

4. Main Library

What: We want to create a library space where users are able to read, study and work in a welcoming and comfortable environment. This needs to also be a space that is flexible and can be used for a range of activities.
Why: So everyone feels welcome to sit down and spend time for work or pleasure.



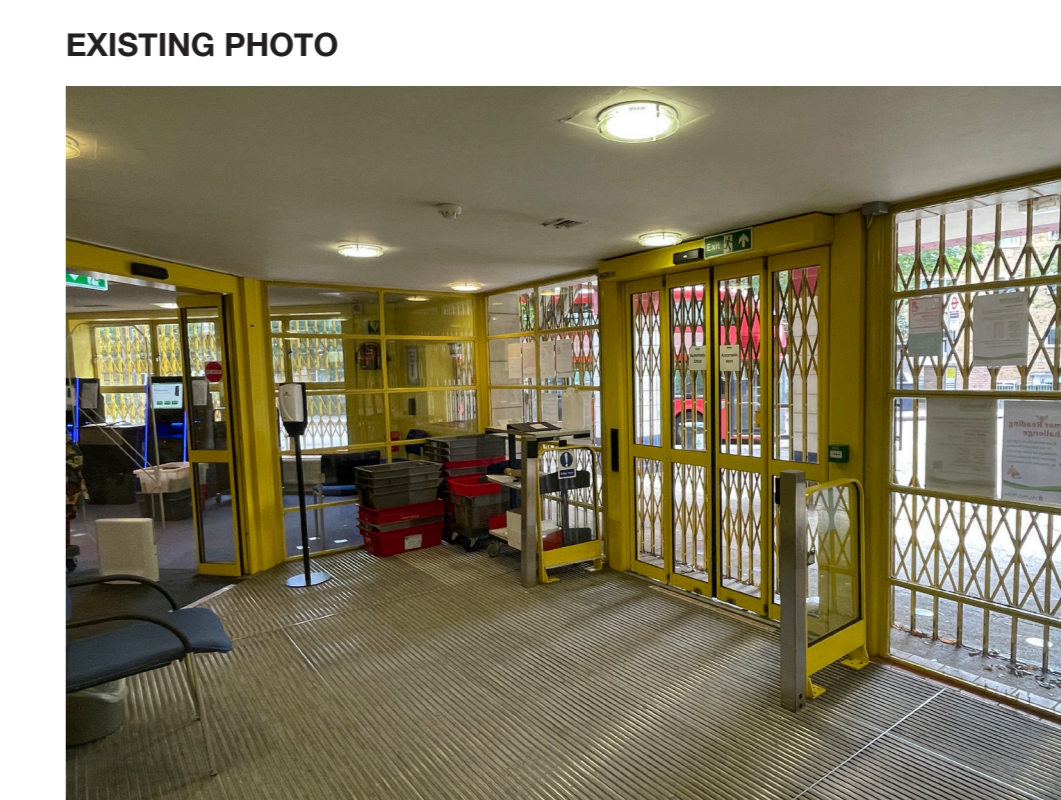
2. Reception

What: The reception is currently very large and in the middle of the room. We could reduce the size and change the location of the reception desk whilst still making sure it is in a visible location.
Why: This would give more space to the library.



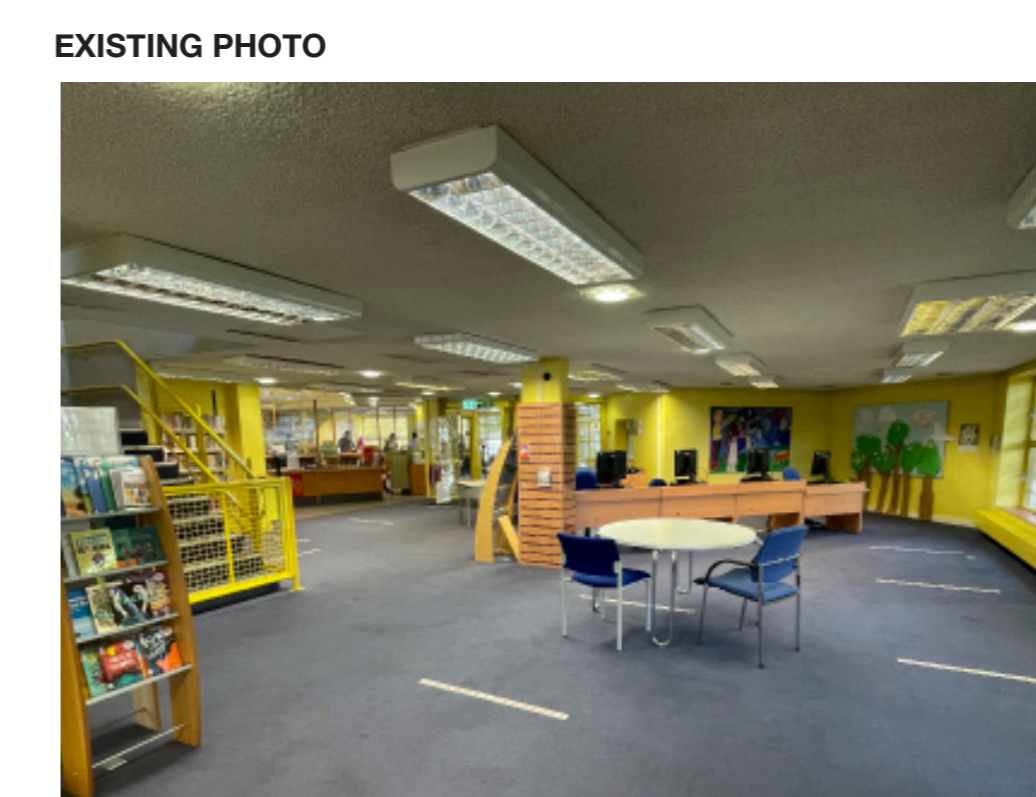
1. Entrance / Lobby

What: There is an unused external covered area where fly-tipping happens. This sits adjacent to the oversided draft lobby. We could enclose the covered external entrance to incorporate it into the lobby.
Why: This would create a clearer entrance sequence and make the space more welcoming.



7. Children's Library

What: The children's library currently has a very large floor area which is not used effectively. We could bring the children's library into the main library area and turn the current space into a new event space deliver a wide programme of activities.
Why: Creating a new event space would allow us to offer more activities to serve all ages as well as continuing to support the library's existing group activities and homework sessions.



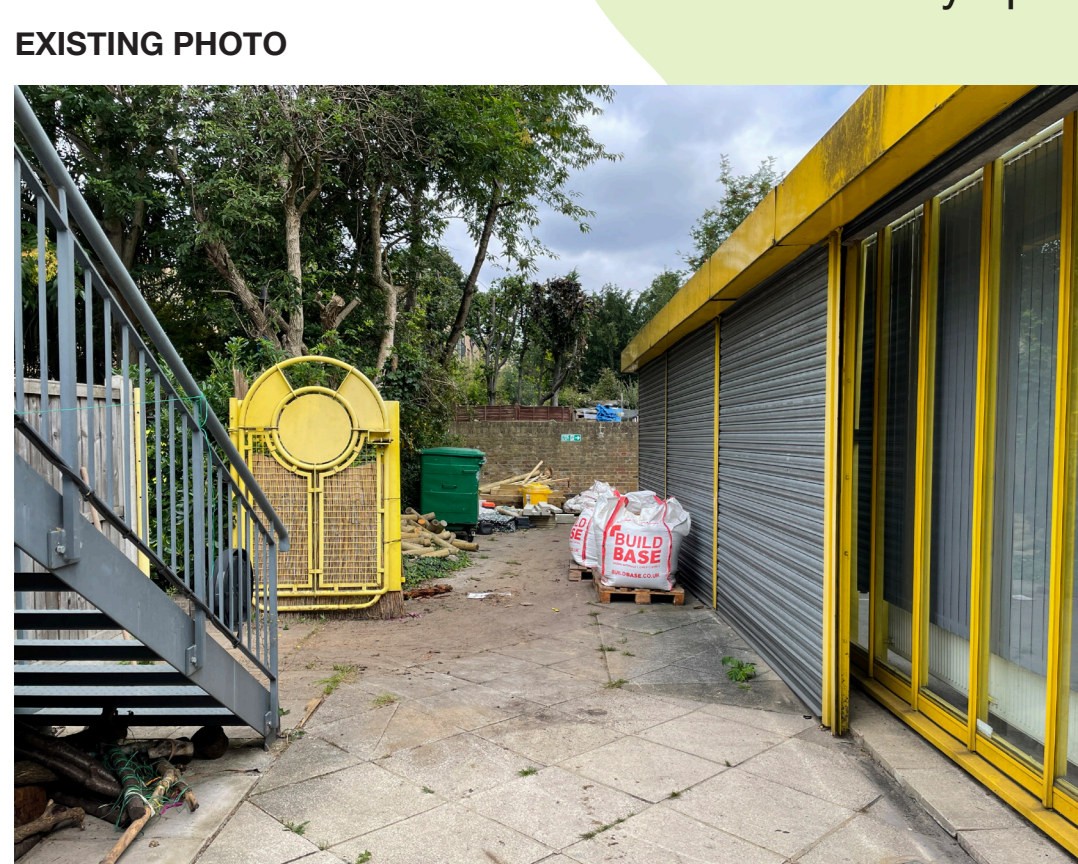
5. Conservatory informal seating/study

What: The conservatory is currently under used and in the summer months it can overheat. We could add new furniture and take measures to reduce overheating.
Why: This would make the space enjoyable to spend time in year-round and create a better connection to the external area.



6. External garden area

What: Currently the outdoor space is not used. There is the potential to create a new growing space for the library and the local community.
Why: This would create the opportunity for a garden which could support a growing project. Create outdoor seating which can be used in the warmer months and create a clearer connection to the conservatory space.



A unique opportunity to revitalise Mildmay Library.

Proposed ground floor improvement ideas. What do you think?

There are some initial ideas to improve the library outlined below. These proposals are in their very early stages so we want to know what you think about it, and what ideas you have.

On the ground floor, the new entrance has informal seating for people to relax and meet a friend. A new event space hosts activities for all ages, including well-being activities, education and culture. A refurbished library space with a new layout and furniture brings the adult library together with the children's library. At the back of the library a new informal seating and study space links to the garden which has the potential to host a growing project. Alongside this there are bookable rooms which individuals and groups use to host local meetings. New accessible toilets on the ground floor mean residents can spend more time in the space.

What do we want to know?

- What do you think of our initial ideas?
- Do you have any ideas?

7. External garden area

To incorporate seating & planters that could support a volunteer project with a connection to the conservatory.



DESIGN IDEAS

5. Conservatory informal seating/study

An informal seating area with new furniture for study/reading with connection to the external garden.



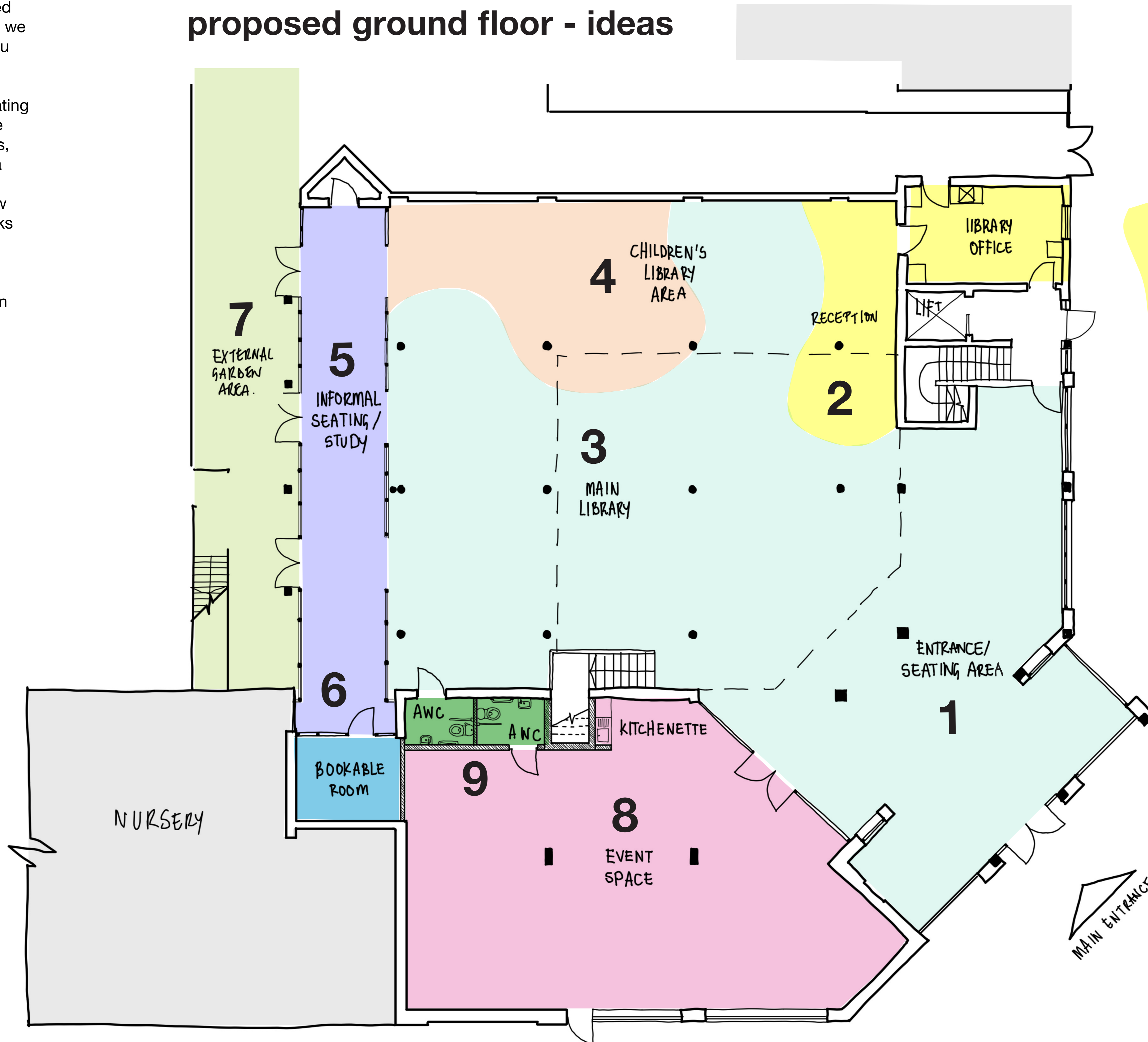
DESIGN IDEAS

6. Bookable Rooms

At least one new bookable room on the ground floor for residents and groups to use.

9. Toilets

At least two new accessible toilets to be added at ground floor level so users can spend more time in the space.



proposed ground floor - ideas

4. Children's Library

Open plan within the main library space using mobile shelving and furniture to enable the space to be adapted for activities and events.



DESIGN IDEAS

2. Reception / Library Office

Reception counter moved to have a more direct connection to the library office behind.



DESIGN IDEAS

3. Main Library

Main library space to be refurbished including a new layout, new shelving, new desking and new furniture.

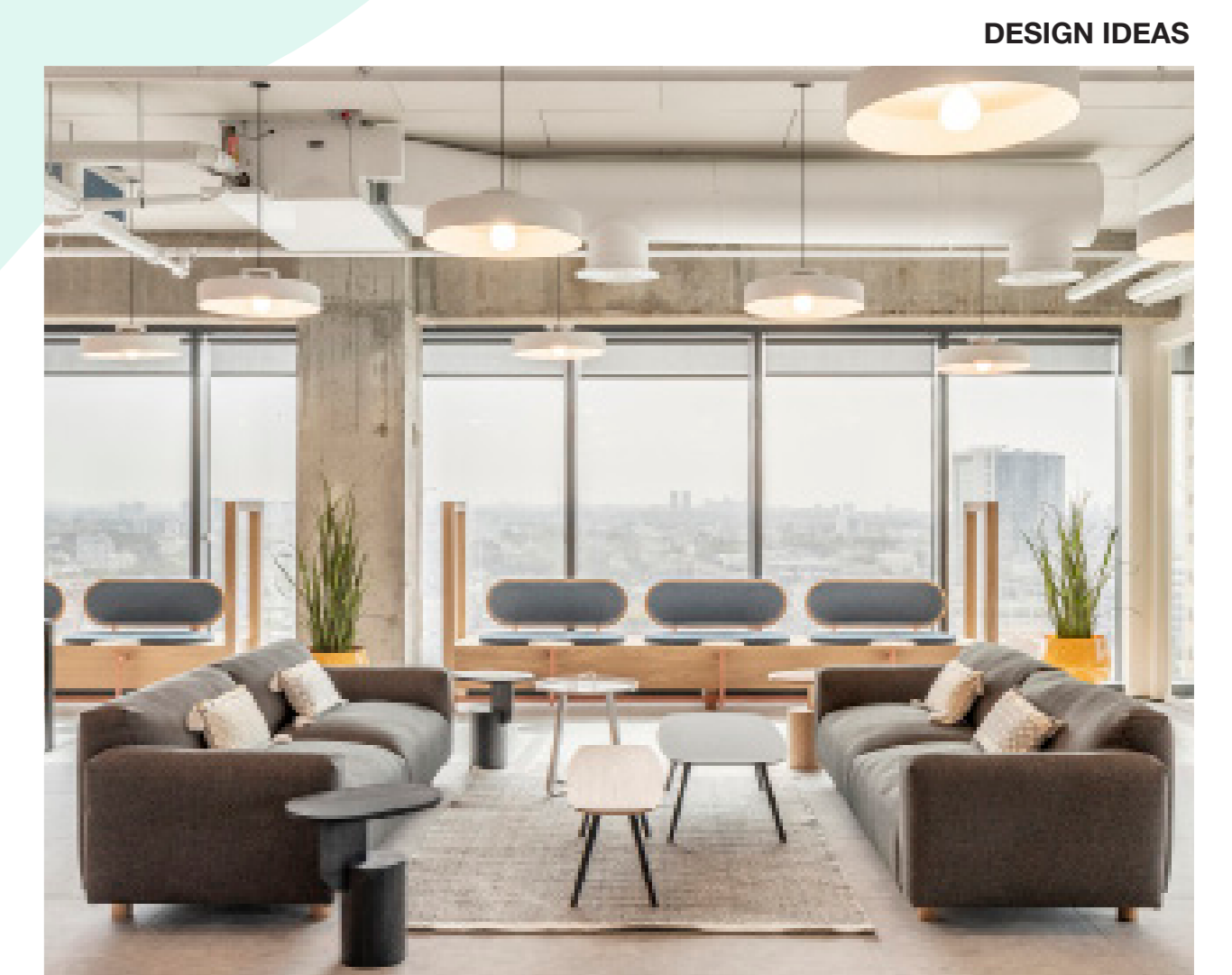
1. Entrance

Draft lobby removed to create a smoother entrance from the street to the library.

8. Event Space

Stair moved to make space for a self-contained kitchenette & WC. When the library is closed there could be external access to the space.

DESIGN IDEAS



DESIGN IDEAS

A unique opportunity to revitalise Mildmay Library.

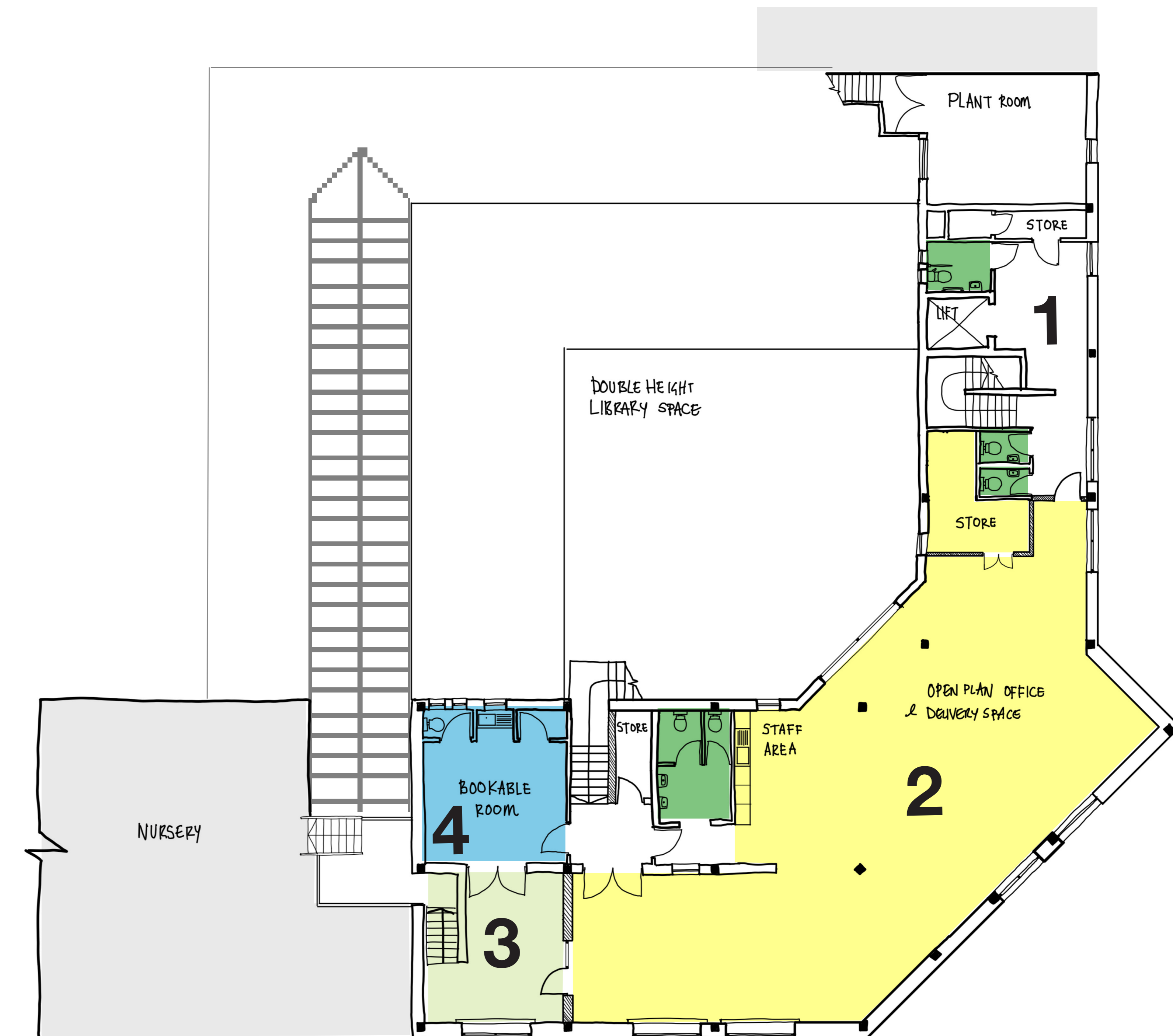
Proposed first floor improvement ideas. What do you think?

On the first floor, we are hoping to make the space more useable for greater range of council services and partners. Currently the first floor is used as an office space for the library and other groups such as Music Education Islington. The space poorly planned out making it difficult to access all of the spaces effectively. The existing bookable room is not accessible to the public.

Our hope for the first floor is to rationalise the space to create an open plan that is more functional. This would become a new work and delivery space for Islington's Fairer Together team alongside existing groups such as Music Education Islington. The Fairer Together team will be able to programme activities and services for Mildmay residents and run them from the new event space and meeting rooms.

What do we want to know?

- What other activities and services would you like to see in the building?



existing first floor - opportunities

- 1. Toilets**
Currently the toilets are only at first floor level. Provide toilets for library users on the ground floor.
- 2. Office Spaces**
Currently the first floor layout is overly complex and makes some areas inaccessible. Consider consolidating all administration spaces for different groups into one.
- 3. Terrace**
Terrace is currently unused. Terrace could be cleaned & re-landscaped or built over to make more internal floor area.
- 4. Private Room**
Existing meeting room with toilet and kitchenette is a good space however currently hard to access.

proposed first floor - ideas

- 1. Toilets**
Additional toilets on the ground floor means the public would not need to use the first floor toilets.
- 2. Office & Delivery Space**
Internal partitions to be taken down to make a large open space where the Islington Fairer Together team can have office space and room to deliver services for the public alongside other groups such as Music Education Islington.
- 3. Terrace**
The unused terrace area has been reduced with part of it being built over to create more internal space.
- 4. Bookable Room**
Meeting room with toilet and kitchenette is self-contained so that it could be hired by third parties alongside the terrace area.

A unique opportunity to revitalise Mildmay Library.

Proposed outside improvements. What do you think?

Externally, one of the main challenges with Mildmay Library is its lack of visibility and street presence. The building needs some maintenance and the general street area around Mildmay Library needs improving to make it more inviting. This would include **public realm ideas, refreshing the building** and **visibility and signage**.

What do we want to know?

- What do you think of our initial ideas?
- Do you have any ideas?

Public realm ideas

- Replace paving and add planters, greenery and seating areas
- Improve the external lighting
- Improve the bin and bike storage around the library



Existing Mildmay Library entrance



Refreshing the building

- Remove all the yellow shutters
- Clean the tiles on the facade
- New entrance area with planting

Visibility and signage

- Improve sign posting from the street
- New library signage visible from both direction
- Create clear digital notice board to describe 'what's on' in the Mildmay Library and local area
- Remove some of the foliage from the trees around the building to improve sight lines



This is an initial sketch idea for creating a new external entrance. What do you think?