

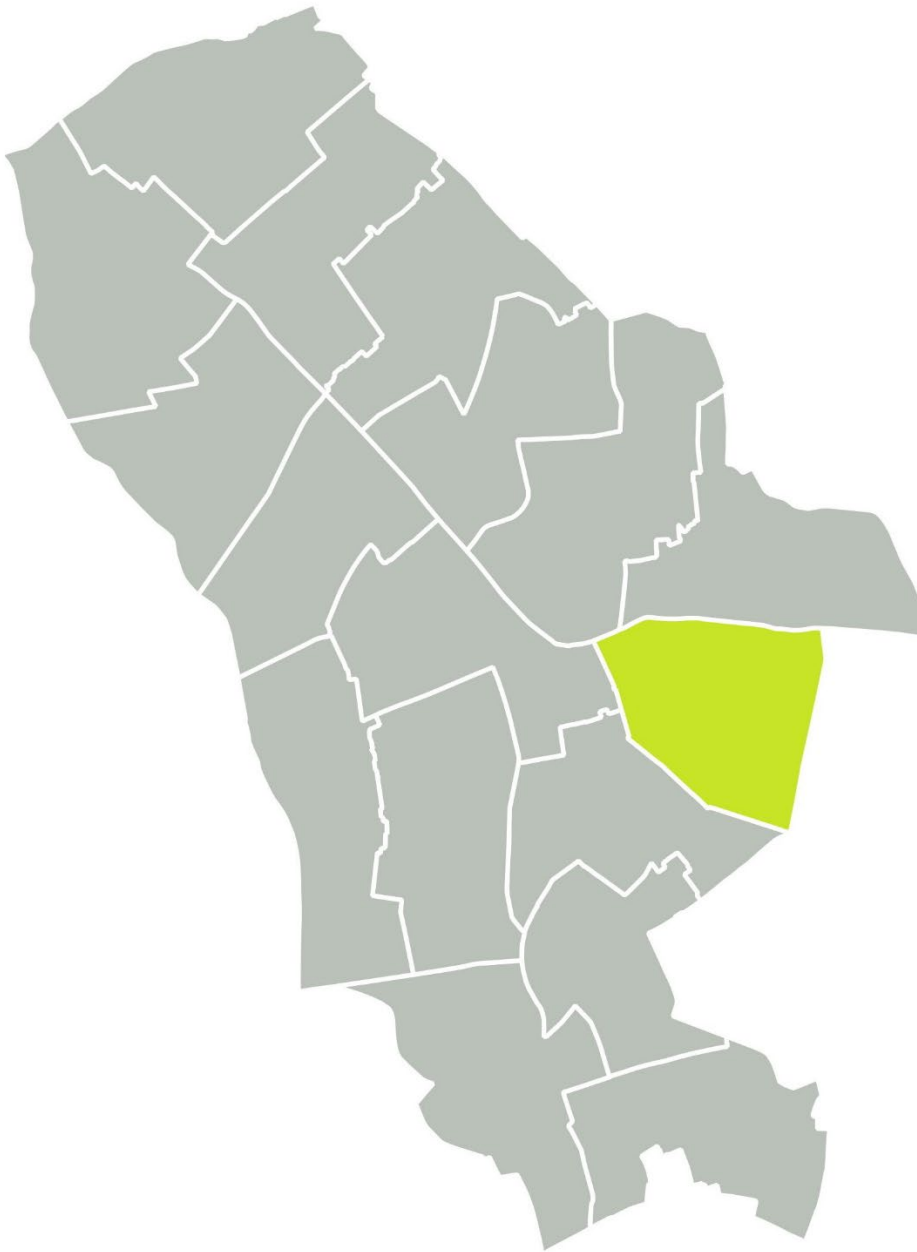


ISLINGTON

For a more equal future

Canonbury

Community Plan - June 2022



Introduction

Thank you for taking the time to look at our Community Plan for Canonbury.

The Community Plan gives details of different schemes that, as your local councillors, we want to prioritise because we believe they will improve our area and enhance the lives of the people who live here.

Some of these improvement schemes have recently been completed, others are in the process of being implemented and some relate to projects we hope to see carried out in the future subject to funding becoming available.

As you can see, the projects in this Community Plan are wide-ranging. They include improvements to our leisure and other community facilities, initiatives that make our parks, streets and green spaces safer and more welcoming and schemes that make travel easier and more pleasant.

We work with local groups like tenants and residents' associations, schools, neighbourhood watch groups, gardening clubs, community centres and local special interest organisations of all kinds to come up with the improvement priorities that are set out in this Community Plan. If you have ideas for projects you would like to see here, then get in touch with us by sending us an email or by coming along to one of our regular ward partnership meetings.

The money to pay for the projects described in this Community Plan comes for the most part from financial contributions that developers are required to make when they build in our area.

Contents

The projects are split into three sections:

- Awaiting funding – projects that councillors are minded to support depending on availability of funds but have not yet made any allocations towards.
- Being Implemented – projects that have been funded and are ongoing.
- Completed – projects that were previously funded and now completed.

Details of potential, current and past projects are also available to view on our [interactive map](#).

Funding Allocations

Once projects have received funds they are listed as being implemented and then completed. Projects are primarily funded through contributions received from two different mechanisms secured when planning permissions are granted – Section 106 contributions or from the Community Infrastructure Levy. Please contact S106@islington.gov.uk for further information on the specific developments the funds originated from, if required.

How To Get Involved

Contact your councillor to propose a new project or attend a ward partnership meeting.

For more information about this community plan please contact us on either CIL@Islington.gov.uk or S106@Islington.gov.uk

Awaiting Funding

Estate Improvements

Pram Storage at Sickert Court

Approximate cost: £15,000

This scheme would provide secure pram storage at Sickert Court, providing space for families with young children to store their buggies safely. This will prevent prams taking up space inside properties or being left in communal stairways of buildings, where they can undermine fire safety requirements.

Playground Improvements at Red House Square

Approximate cost: £30,000

This scheme would improve the existing playground at Red House Square, by replacing the play equipment and installing a new wet pour surface. Refurbishment of the playground will improve the public realm, increasing amenity and providing a wider range of outdoor play opportunities for children in the area, especially younger children.

Playground Improvements at Handa Walk

Approximate cost: £30,000

This scheme would improve the existing playground at Handa Walk, by replacing the play equipment and installing a new wet pour surface. Refurbishment of the playground will improve the public realm, increasing amenity and providing a wider range of outdoor play opportunities for children in the area, especially younger children.

Waste and Recycling Facility Improvements at Bute Walk

Approximate cost: £31,000

This scheme would improve the waste and recycling facilities at Bute Walk. The bins are currently located close to the entrances to residents' properties and the estate suffers from fly-tipping. This project would install 4 new bin housing units, to improve the appearance of the existing waste and recycling sites, by containing bins within purpose-built units which are clearly signed.

Playground Improvements at Bentham Court

Approximate cost: £15,000

This scheme would repair and improve the existing play equipment at Bentham Court. Refurbishment of the playground will improve the public realm, increasing amenity and providing a wider range of outdoor play opportunities for children in the area.

Open Space

Canonbury Ward Tree Planting

Approximate cost: £10,000

This scheme would provide increased street tree planting in suitable locations in the ward, in line with the Council's tree strategy.

Sports and Recreation

St Paul's South Open Space

Approximate cost: £50,000

This scheme would improve the play area by replacing some of the existing play equipment and by adding more natural play opportunities. The current play area is small is not particularly interesting in terms of play value. Upgrading the play equipment will provide a wider variety of exciting apparatus that caters to different age groups.

Transport and Public Realm

New River Walk Walking/ Cycling Links

Approximate cost: £500,000

This is a major project to link all of the sections of the New River Walk through increased access and new footpaths, as well as the improvement of assets and the renewal of planting. The New River Walk is currently underused as a strategic pedestrian link through the borough. Many entrances do not have good access and many assets are in disrepair and need replacing. This project would improve access and would make the public realm more enjoyable for users, encouraging more pedestrians and cyclists to make use of the route.

Cycling Improvements at Balls Pond Road and Southgate Road Junction

Approximate cost: £30,000

This scheme will provide an improved, safer cycling environment at the signalised junction of Balls Pond Road, Southgate Road and Mildmay Park. Improvements will include the provision of Advanced Stop Line road markings, which better accommodate cyclists, as well as the re-modelling of the timing of the traffic lights at the junction.

Cycle Route Improvements - Rotherfield Street to Essex Road

Approximate cost: TBC

This project would provide a cycle crossing at Rotherfield Street to enable a safe crossing point across Essex Road, preferably using adjacent signals. This will improve the cycle facilities, for local residents, workers and visitors. The scheme will likely be delivered with Transport for London (TfL) funding in line with the new Quietway.

Being Implemented

Community Facilities

Almorah Road Community Centre

Allocations made:

- Local CIL (£49,800)

This project involves the redevelopment of the area outside of the Almorah Road Community Centre. It aims to make the outside space more functional and will create a play area, a community garden, and a covered decking area. The community garden will meet the demand for a local gardening club, the play area will provide a place for children to engage in outdoor play, and the decking area will allow people to sit and enjoy the garden.



Estate Improvements

Bin Storage Improvements at Elizabeth Kenny House

Allocations made:

- Local CIL (£15,000)

This project involves improving the waste and recycling facilities at Elizabeth Kenny House. The bins are currently located close to the entrances to residents' properties. This project would install new bin housing units, to improve the appearance of the existing waste and recycling sites, by containing bins within purpose-built units which are clearly signed

Green Wall at Elizabeth Kenny House

Allocations made:

- Local CIL (£10,000)

This project will involve either the installation of a green screen or increased planting activity to enhance the existing hedge at Elizabeth Kenny House. The purpose of the project is to better screen residents from the traffic on St Paul's Road, which is a main road that runs alongside the estate.

Environmental Improvements at Sark House

Allocations made:

- Local CIL (£15,000)

This project aims to build on the existing planting activities undertaken by residents of Sark House. It will provide wooden planters, soil, plants and gardening equipment to enable residents to continue their community gardening project. Other improvements may also include delivering seating and/or picnic benches, repairing washing lines, and repainting of the garage doors.

Environmental Improvements at Haslam and Horsefield House

Allocations made:

- Local CIL (£15,000)

This project will provide environmental improvements to the outdoor area at Haslam and Horsefield House. Improvements may include landscaping works, installation of wooden planters for community growing projects, installation of seating/and or picnic benches, as well as the installation of natural play apparatus. These works will improve the public realm, increasing residents' amenity and increasing play opportunities for children.

Community Planting at Bute Walk

Allocations made:

- Local CIL (£10,000)

This project aims to build on the existing planting activities undertaken by residents of Bute Walk. It will provide wooden planters, soil, plants and gardening equipment to enable residents to continue their community gardening project.

Planting at Mull Walk

Allocations made:

- Local CIL (£5,000)

This project would increase biodiversity and amenity through planting a number of low maintenance hedges and trees on an area of green space at Mull Walk.

Environmental Improvements at Rotherfield Court

Allocations made:

- Local CIL (£15,000)

This project will provide environmental improvements to the outdoor amenity space at Rotherfield Court. Improvements may include landscaping works, installation of wooden planters for community growing projects, installation of seating/and or picnic benches, as well as updating the existing play equipment. These works will improve the public realm, increasing residents' amenity and increasing play opportunities for children.

Bentham Court Refuse Store Improvements

Allocations made:

- Local CIL (£12,000)

This project will provide match funding to improve the waste storage and recycling facilities at Bentham Court. The scheme will install 2 sets of bin enclosures on the estate, which will improve the public realm and increase amenity for residents.

Transport and Public Realm

Canonbury Secure Estate Cycle Parking

Allocations made:

- Local CIL (£18,000)

This project will deliver new cycle hangers on estates. The new hangars, shelters and covered stands will help residents to store cycles safely, rather than taking up space inside properties or being left in communal areas of buildings, where they can undermine fire safety requirements. The availability of secure cycle storage will also encourage more cycle use, with personal, environmental, health and economic benefits.

Open Space

Contribution to Morton Road Open Space Masterplan

Allocations made:

- Local CIL (£30,000)
- S106 (£116,630)

The scheme aims to transform the open space and play areas at Morton Road Park by providing a new ball court, redesign of the play area and new equipment and improvements to the footpaths and grassed areas. Tree planting would also be included in the scheme. The park currently suffers from anti-social behaviour and the play area is in poor condition and lacks engagement value. Improvements would make the park more attractive and usable for local residents.

Improvements to the New River Site of Importance for Nature Conservation

This project aims to restore the New River to its full potential as a unique landscape feature and wildlife haven, by upgrading the water body infrastructure to create a sustainable pond and aerated water system. It will repair the lining of the watercourse, bridge and other associated features, improving biodiversity and safety and reducing water loss in support of Islington's Biodiversity Action Plan. The project will create an attractive open space, for the benefit of the local community, that encourages public use for natural play, leisure activities, meeting and relaxing.

Completed

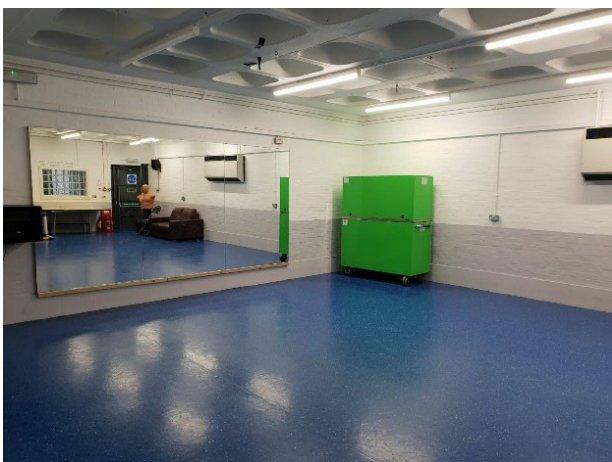
Community Facilities

Rose Bowl Youth - Internal Decorations and Building Works

Allocations made:

- Local CIL (£50,000)

The scheme delivered significant internal improvements to the Rose Bowl Youth Hub. All spaces were repainted with brighter colours. Two new advice rooms were created, to enable counselling and other services to take place in private and dedicated spaces. The music room was also renovated with a new recording booth, dance studio and art room. The centre can now offer art and drama-based activities, as well as sports, and even circus skills, for children and young people aged 8 and above. Project completed in October 2019.



Open Space

Ashby Grove - Flood Abatement

Allocations made:

- Local CIL (£15,000)

This scheme delivered improvements to housing estate green areas to improve amenity value for residents while reducing flood risk within the local area through sustainable urban drainage system (SUDS) techniques.

Improved Play Area on Marquees Estate (Caldy Walk)

This scheme delivered improvements to the play area in Caldly Walk increasing the use of the space, particularly by the wider community. Upgrading the play equipment has provided a wider variety of exciting apparatus that caters to different age groups. Project completed in December 2020.



New River Walk - Access Improvements

Allocations made:

- Local CIL (£14,000)

The scheme improved access at all entrances on the Canonbury Road Section of the park and created a new entrance which allows level access to the St Paul's Road section near Willow Bridge and avoid the steep gradient from the existing entrance on Willow Bridge.

Playspace

Nightingale Park - Roundabout Replacement

Allocations made:

- Local CIL (£3,935)

This scheme delivered the replacement of roundabout play equipment in Nightingale Park.

Renewal of Rosemary Gardens Water Play Feature

This project replaced the water play features at Rosemary Gardens. The original feature was installed in 2003. It was expected that the facility would have a lifespan of 8 to 10 years, however it was never replaced. It had fallen into a state of disrepair and was in desperate need of replacement. Project completed in April 2021.

Transport and Public Realm

Canonbury Road/ Canonbury Grove Junction - Bike Hangars

This scheme provided new bike storage hangers at the Canonbury Road/ Canonbury Grove junction. Bike storage hangers help residents to store cycles safely, rather than taking up space inside properties or being left in communal areas of buildings, where they can undermine fire safety requirements. The availability of secure cycle storage will also encourage more cycle use, with personal, environmental, health and economic benefits.

Improved Lighting at the Rose Bowl Centre

This scheme delivered improved lighting within St Paul's Park around the Rose Bowl. The lighting improvements within the park complements the planned investment in lighting along Ramsey Walk, which runs alongside the park.