

Woodfall Park Improvements Design Proposals Public Consultation Feedback 15 March to 12 April 2021



1. Background

Islington Council aims to revitalise and re-establish Woodfall Park as a thriving community space to complement the public realm improvements. The aim is to be delivered through a range of creative landscape improvements, appealing to a wide range of local users and visitors by supporting a varied and inclusive range of activities. The park is located in the Woodfall Road in the Finsbury Area. Adults and children from the local area and schools primarily use the park, but even this usage has declined in recent years as the infrastructure of the park has deteriorated through a lack of investment and anti-social behaviour has increased in and around the park.

2. The Consultation Event

A design proposals public event was held from Monday 15 March to Friday 12 April 2021 to provide an opportunity for the local community to give their feedback about the park.

750 consultation leaflet questionnaires were distributed to the local residents in the Woodfall Park in the Finsbury Park Ward. We held consultations with the local residents, the police and the community safety team to discuss the proposed new improvements. The proposals were also published on www.islington.gov.uk/consultations with a deadline to return questionnaires by Friday 12 April.

89 questionnaires were completed and returned. A summary of the results is detailed below:

3. Consultation Response

89 filled in questionnaire responses received. The consultation evening session was attended by 7 people:-

- 29 completed postal feedback forms
- 47 Online feedback surveys
- 6 Emails received
- 7 Evening consultation online sessions feedback

4. Questionnaire feedback

Question 1: Which proposed option for Woodfall Park do you prefer?

Option One	17
Option Two	30
Option Three	26
Total respondents	73

Question 2: Where do you think the children’s’ playground should be located in the park?

Retain in the existing location next to the sports court (Option 1 and 2)	43
Relocated to the north of the park away from the sports court (Option 3)	25
Don’t know	8
Total respondents	76

Question 3: Do you think the proposals should include outdoor gym equipment?

Yes	48
No	23
Don't know	8
Total respondents	79

Question 4: Do you have any additional comments?

Feedback forms, Website surveys, emails	62
Consultation Online discussions	7
Total respondents	69

Comments relating to the proposals:

Security and Safety	20
Sports Pitch	17
Gym equipment	17
Tree and plants	17
Dogs in the park	16
Anti- social behaviour	14
Play area and equipment	13
Seating	12
Other	4

Question 5: Are you?

A resident	88
A business	1
Total respondents	89

Question 6: What is your postcode?

Total respondents	73
Respondents who skipped this question	16

Question 7: How often do you use Woodfall Park?

Never	25
Sometimes	41
A lot	20
Total respondents	86

Question 8: Ethnicity

Asian or Asian British	5
Black African/ Caribbean/ Black British	8
White	49
Other, please specify	6
Total respondents	68

Question 9: Gender

Male	21
Female	53
Transgender	0
Non Binary	0
Prefer not to say	6
Total respondents	80

Question 10: Age

Under 16	1
16 - 24	0
25 - 44	38
45 - 64	18
65+	10
Prefer not to say	6
Total respondents	73

Question 11: Disability: Do you consider yourself to be disabled or have a long-term illness (e.g. cancer, diabetes, mental health condition?)

Yes	16
No	51
Prefer not to say	8
Total respondents	75

5. Summary

Overall, the responses showed that 30 residents preferred option two, 26 preferred option three and 17 like option one. 48 residents selected to have the outdoor gym equipment included in the improvements to the park and 43 would like to retain the playground in the existing location next to the sports court.

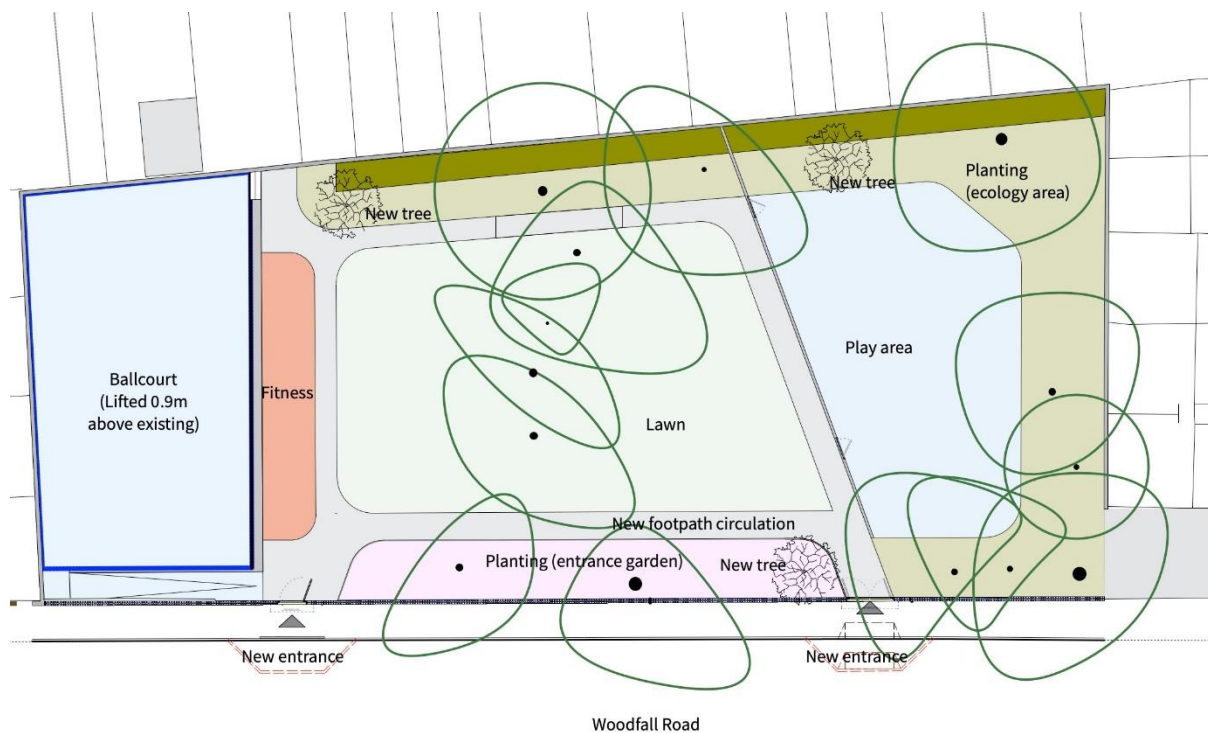
The local community liked the park but were concerned about the safety issues and the lack of clear views appeared to contribute to this, as well as the infrequent locking of the park at night. There is a general feeling that the new improvements should have provision for ballgames, with a majority favouring a facility for multi sports (eg: football, basketball and netball). In addition, residents felt that the improvements would provide a pleasant, safe open space where the local community and young children can play, enjoy and relax.

Suggestions were made to take out the ballcourt to help improve the sense of security as well as increasing the footfall in the park by improving the general facilities, and increasing community activities.

The Metropolitan Police and the LBI Community Safety Team have been in consultation with the Council to discuss the safety, security, anti-social behaviour and the crime issues in and around the park. They have advised the Council that it is essential that the improvements deliver a design option with provisions to use the entire open space by encouraging play and movement activities in the northern and southern areas of the park. In addition, they believe there should be better surveillance by providing pedestrian access around the full site and clear views in and throughout the park to help to deter anti - social behaviour and to increase the security and safety for the public.

In view of the above, the Council have selected the consultation design Option 3 layout (see below amended option 3b layout plan excluding the fitness area along the western boundary wall) to take forward as it would be most beneficial to the local community in providing valuable high quality improvements with the appropriate security and safety enhancements to the park.

5.1 Proposed Option 3b Layout Plan



This option delivers on the community consultation:-

- Sports court in the existing position.
- Creation of a new play area in the northern side of the park.
- Inclusion of an outdoor fitness/gym area.
- Circular footpaths around the lawn and play area to provide clear views around the park.
- New native/wildlife planting areas.

The improvements will contribute to Islington's net zero carbon plan through the following actions:

- keeping or increasing the number of trees in the park,
- creating more areas of planting in the park,
- increasing wildlife areas/gardens for the local community and
- creating more sustainable urban drainage.

Option 3a will deliver more biodiversity around the north, east and west boundaries of the park. These areas will have mixed native hedgerow to increase the wildlife in the park and air quality plants suitable for climate change in accordance with the Islington Council Biodiversity Action Plan 2020 – 2025.

6. Next Steps

The consultation event acted as a means to publicise the improvement works project for the park, and it was gratifying many of those responded positively. The feedback that we have received from the residents will be reviewed and considered to be included in to the final design proposals.

1. In October, the plans will be in the park and uploaded on to the Council's website.
2. The Council will finalise the cost for the Design Option Three.
3. The procurement stage to appoint a landscape contractor will start in December 2021.
4. We anticipate that the improvements will start in early spring 2022 and take approximately four months to complete.

For more information about the project, please contact:

Jenifer Baker
Parks Project Manager
Environment and Commercial Operations
Islington Council
Phone: 020 7527 4604
Email: jenifer.baker@islington.gov.uk