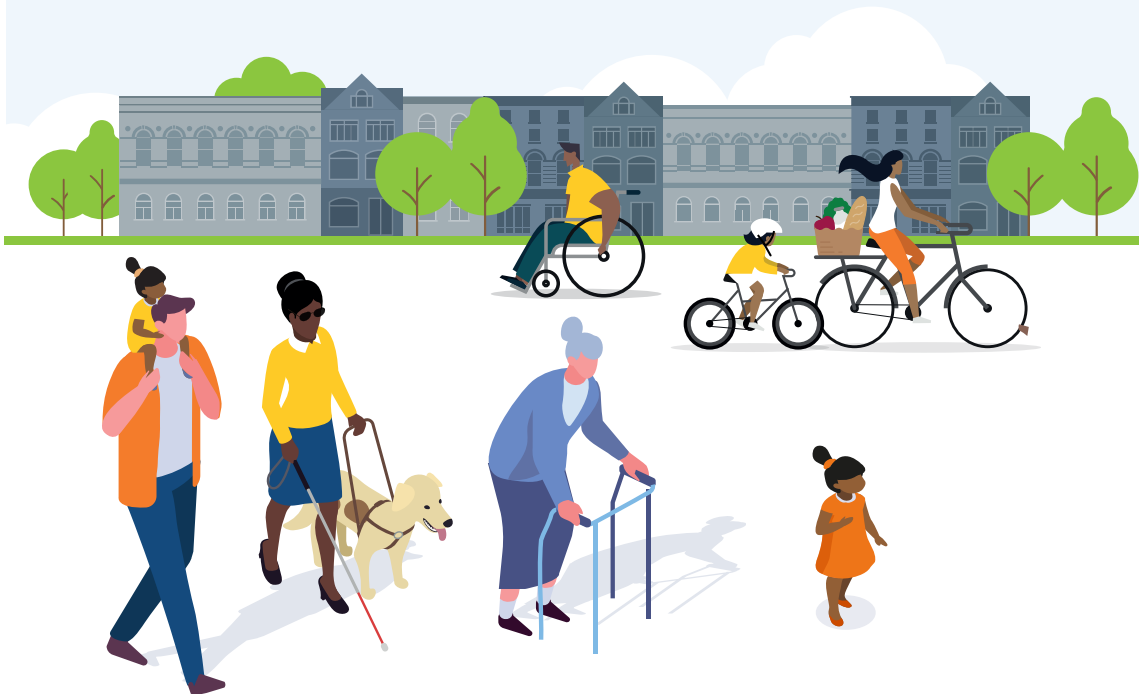




**People-Friendly Streets**  
Better places for everyone

# Canonbury West people-friendly streets neighbourhood

## Next steps and future improvements



**ISLINGTON**  
For a more equal future

## **Dear residents,**

In November 2020, as part of our people-friendly streets (PFS) scheme, we introduced a low traffic neighbourhood (LTN) trial in the Canonbury West area.

The objectives of the Canonbury West LTN scheme trial were:

- To make it easier and safer to walk and cycle as a first choice for local travel
- To clean up the air we breathe and protect and improve the environment
- To reduce danger, eliminate deaths and serious injuries on Islington's streets

We monitored the trial and held a public consultation from 30 November 2021 to 18 January 2022.

The feedback from the consultation and monitoring results demonstrated that the trial had largely positive impacts on the Canonbury West LTN scheme and achieved the trial's objectives.

In March 2022, we announced that we would be continuing the Canonbury West LTN scheme and made an important change to allow Blue Badge holders to travel within the neighbourhood.

New signage was installed at Canonbury Place, Alwyne Road, Clephane Road and Ramsey Walk.

## Next steps for the Canonbury West LTN

We have continued to monitor the Canonbury West LTN scheme.

The final monitoring results compared data collected in October 2021 with data collected in October 2022 to monitor the scheme after we exempted eligible Blue Badge holders.

The results demonstrate that the Canonbury West LTN scheme is continuing to have positive impacts.

**We have decided to continue the Canonbury West LTN scheme with the Blue Badge holders exemption on a permanent basis from 24 February 2023.**



To view the full final monitoring report, visit our website or scan the QR code:

**<https://www.islington.gov.uk/roads/people-friendly-streets/canonbury-west>**

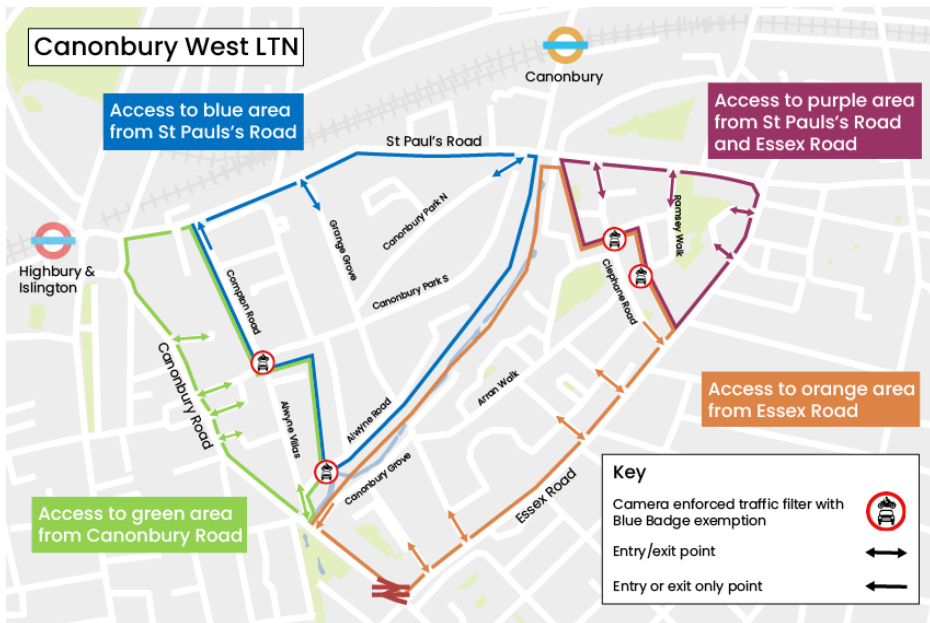


## The future of the Canonbury West LTN

We will continue to work to improve the local environment in Canonbury West. As part of the **people-friendly pavements programme** we will make improvements to footpaths to ensure they are accessible for walking, wheeling and using buggies and wheelchairs.

We will also work on implementing more **greening** in Canonbury West. This will help boost local biodiversity, improve air quality, and create a more pleasant environment for local people to come together.

Additionally, we will continue to monitor specific roads and address safety concerns at main road junctions and improving conditions for people walking and cycling.



The current traffic restrictions, shown on the map above, will continue to operate as normal.

## Get in touch

If you have further questions, drop us a line at **CanonburyWestLTN@islington.gov.uk** or by post:

**Public Realm, 1 Cottage Road, London, N7 8TP.**

To find out more about our people-friendly streets programme please visit: **[www.islington.gov.uk/peoplefriendlystreets](http://www.islington.gov.uk/peoplefriendlystreets)**

Do you need this information in another language, or reading format such as Braille, large print, or Easy Read? Please contact us at **CanonburyWestLTN@islington.gov.uk** or write to us: **Public Realm, 1 Cottage Road, London, N7 8TP.**

Yours sincerely,

**Councillor Rowena Champion**

Executive Member for Environment, Air Quality and Transport