



# Wray Crescent Park Building

**Please read this leaflet to find out more about the new park building at Wray Crescent Open Space.**

You can find out more, sign up for our online resident information sessions and give us your feedback at [www.islington.gov.uk/wraycrescentpark](http://www.islington.gov.uk/wraycrescentpark)

**Online information sessions:**

Thursday 10 June, 7-8pm

Tuesday 15 June, 7-8 pm

Or you can write an e-mail to [wraycrescentparkbuilding@islington.gov.uk](mailto:wraycrescentparkbuilding@islington.gov.uk)

**Responses and comments about this project should be received by Friday, 16 JULY 2021.**



## Learn more about the new building

To create a greener, healthier borough that's fairer for everyone we're spending £6.9 million in our parks over the next 2 years. Some of this money is going to improve our parks by installing new facilities and features for the whole community to use. As a part of the recovery from COVID 19, the council is investing in the health of the communities in a range of ways. Improving facilities at Wray Crescent is part of the recovery in your local neighbourhood where providing a space for health and mental wellbeing is critical in delivering health benefits to local residents.

The Wray Crescent park building will be a new, multi-use building that will support and encourage cricket at the site, helping to make it a destination for the sport in inner London. As well as sporting infrastructure, the building will offer a community space for the public benefit, hosting community events and providing a hub for residents and users to come together. The building will also have an office for Middlesex County Cricket Club who are keen to establish a presence at the site.

## Background

The pavilion building was closed to the public in 2017 due to severe subsidence making the building unsafe and the cricket pitch itself is also in need of an upgrade. Following this closure, the number of local residents, users and one-off bookers using the park to play the sport has fallen. There is also a lack of community facilities on the site which has stopped local residents and user groups holding events and community gatherings in the park. Improving community facilities is even more important after the impacts of COVID and the difficulty of socialising and connecting with each other in the community over this last year.

Between 2017 and 2019 we were fortunate to receive funding from the London Marathon Trust, Sport England, capital and s106 funding and ECB (England and Wales Cricket Board) to deliver the project. In November 2020 we procured an architect (NBF Architects) to design the building. NBF have extensive experience in designing and building recreational cricket buildings and community spaces.

We aim to submit our planning application this summer which will request permission to demolish the existing building and construct the new building.

We will continue to update the local community as the project progresses and key timescales are confirmed.



Existing building



Site plan as existing



Site plan as proposed

## What do we want to achieve?

The vision for the Wray Crescent building is to provide a multipurpose community space in the centre of the building and improved facilities to support cricket at the park.

We want to create a high quality building which provides changing and toilet facilities, a community room with kitchen space, and an office. It will:

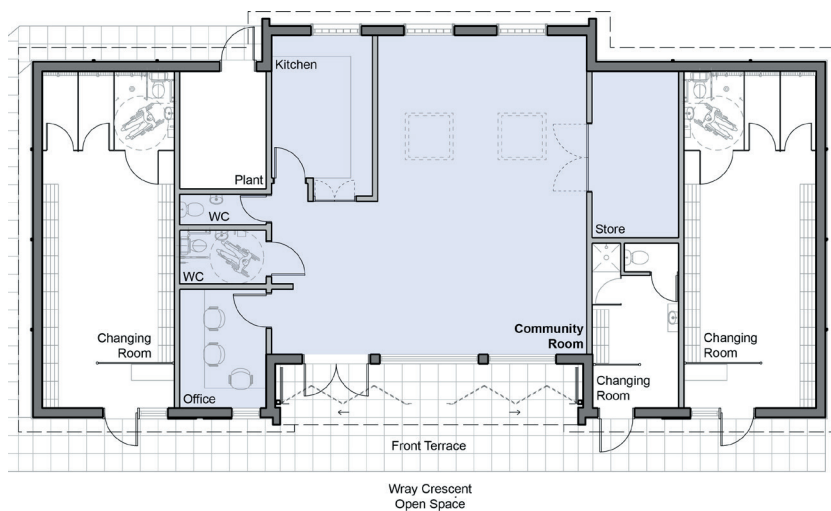
- create maintainable, functional, inclusive and secure building that meets the needs of the local community.

- incorporate principles of sustainability and carbon offsetting throughout the design. The building will have a sustainable heat source and a green roof.
- diversify and improve facilities for park users' enjoyment of the space by providing greater quality facilities and amenities than are currently available.
- upgrade the existing artificial cricket square to a non turf 'spike pro' artificial pitch.

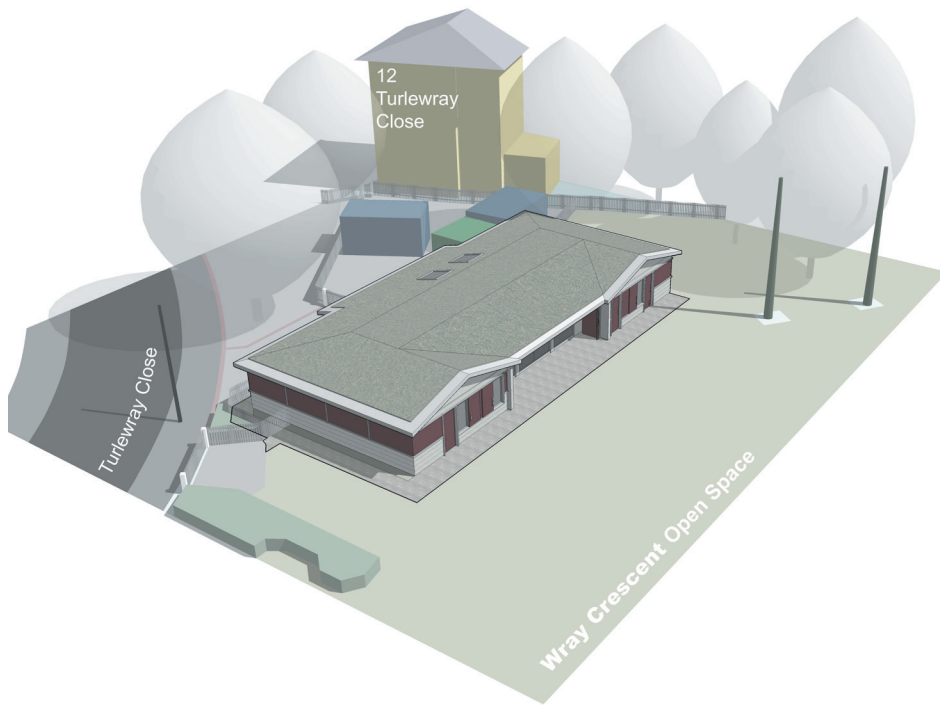
## Proposed building design



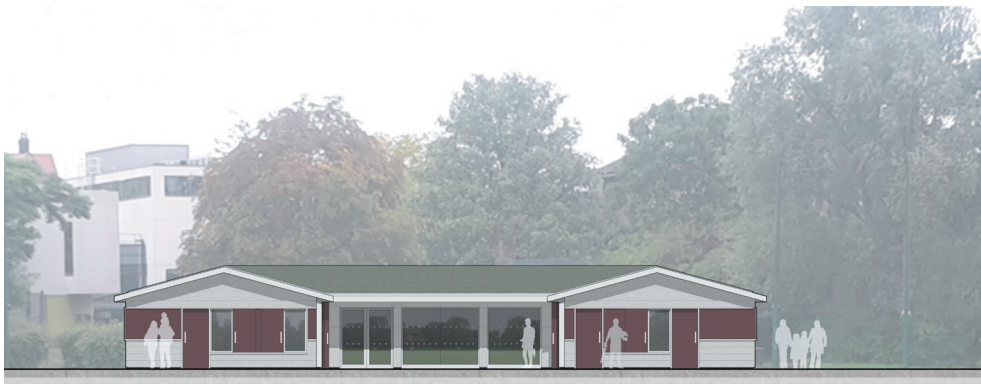
Annotated site plan as proposed



Floor plan



### Proposed Axo



### South-west elevation

## How would you like to use the new community building?

This building project has to meet the requirements and specifications set out by the ECB in their cricket pavilion guidance. These requirements have guided the layout and design of the building. However, we need your feedback on how you would like to use the building and what opportunities you think the new community space can provide to local park users.

You can find a link to our online sessions at [www.islington.gov.uk/wraycrescent](http://www.islington.gov.uk/wraycrescent)

or send us written feedback e-mail to: [wraycrescentparkbuilding@islington.gov.uk](mailto:wraycrescentparkbuilding@islington.gov.uk)

or by post:  
 Kate Tibbetts  
 Parks Projects Team  
 1 Cottage Rd  
 London N7 8TP

Your feedback will help us draft a management plan for the planning application and help us define the use of the space for the local and cricket communities.

You can find out more, find a link to the Responses and comments about this project should be received by Friday, 16 July 2021.

**Do you need this information in another language or reading format such as Braille, large print, audio or Easy Read?  
 Please contact 020 7527 3858.**