

What you told us at the previous consultation

We are planning to make our borough cleaner, greener, and healthier. As part of this, we want to make some improvements to St Judes Street Gardens.

A public consultation event was held at St Jude and St Paul's Primary school in June 2022. The main objectives were to gather ideas on how to improve the park from the local community.

Below is a summary of what you told us:

What do you like about the park?

- A local park where friends and family can meet
- A valuable green space in an urban area
- The childrens playground
- The trainspotting deck, swings and slides
- The space acts as a community hub being located next to the school

Are there reasons why you don't currently use the park?

- Anti-social behaviour
- The park does not feel safe
- The playground is only for younger children, and the play equipment is outdated
- Lack of maintenance and litter
- The green area is difficult to access
- Dogs and dog fouling

What would you like to see included as part of any park improvements?

- Playground improvements to provide a better range of equipment for a wider age group
- More planting and greenery
- Introduction of more seating
- Measures to reduce anti-social behaviour, addressing the hidden corners
- Provision of a coffee shop
- Introduction of outdoor fitness
- Improved lighting
- A growing area for residents, a mural on the end gable of the adjacent house and a toilet

The key priorities which can be addressed from the consultation are:

- Updating and upgrading the playground facilities
- Improving the layout of the park to encourage more people to use the space and assist in tackling anti social behaviour
- Enhance biodiversity

Purpose of this consultation

The Landscape architects have now developed two design ideas for the park, responding to the community feedback received in June.

These design ideas are a starting point for stimulating the discussion with the local community and project stakeholders.

Your thoughts and comments on the two options will help shape a definitive design.

To access the on-line questionnaire to leave your feedback on the design ideas, please scan the QR code.

Alternatively, you can access the questionnaire at the project web-site: www.islington.gov.uk/stjudestgarden



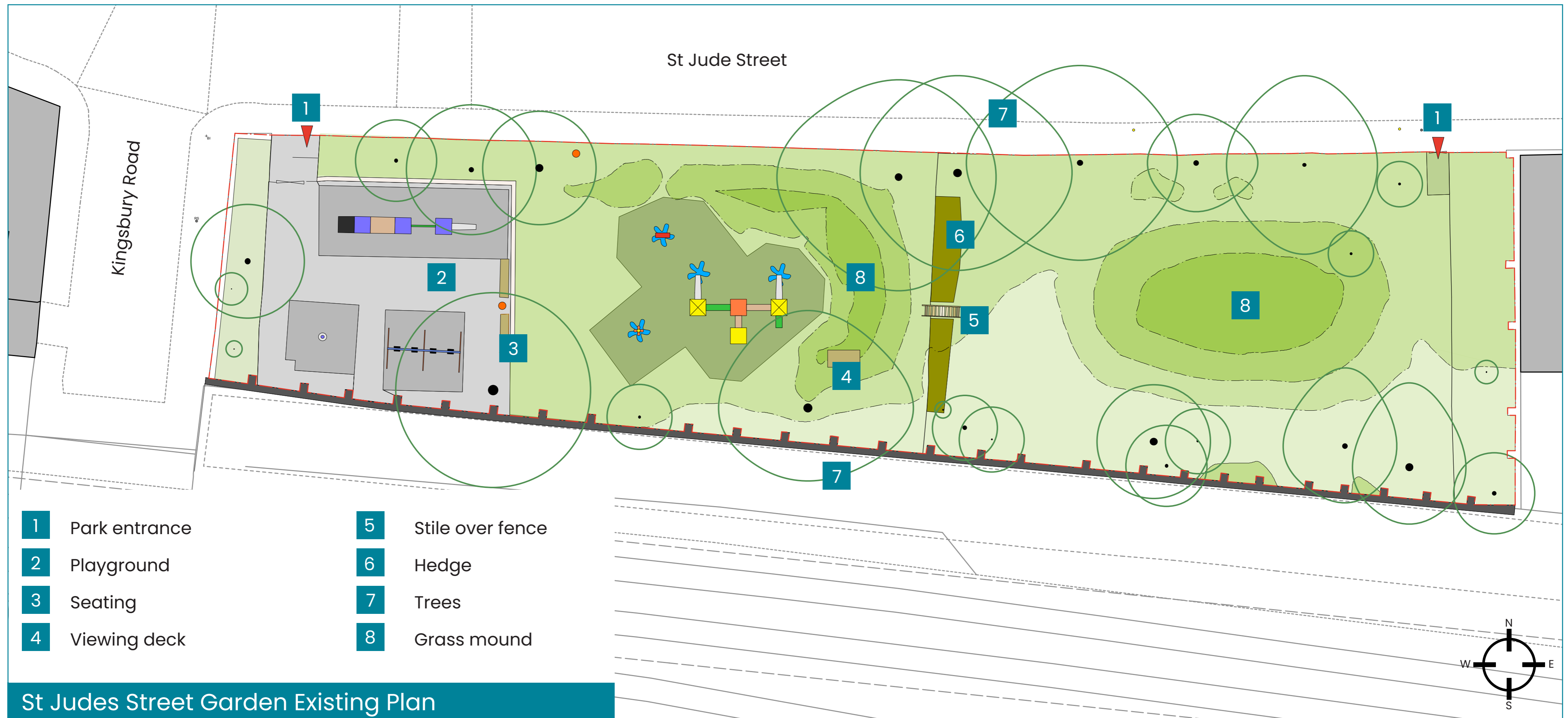
The next steps

Further consultation with local schools and stakeholders will take place to develop detailed designs for the playground, and measures to tackle anti-social behaviour, based on the preferred park layout identified through this consultation.

You can find out more information about the project at: www.islington.gov.uk/stjudestgarden

If you have any queries please email StJudeStGardenRenewal@islington.gov.uk

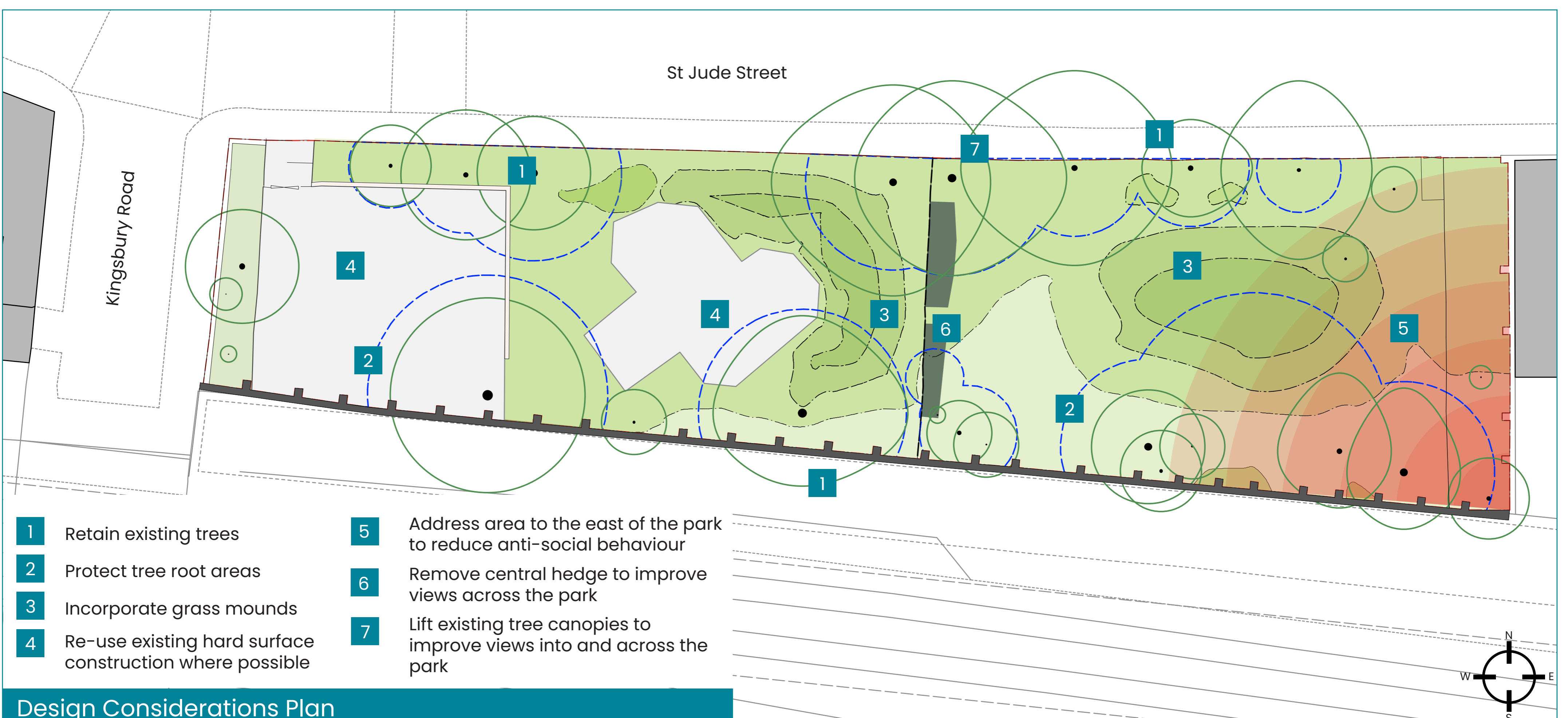
The existing park



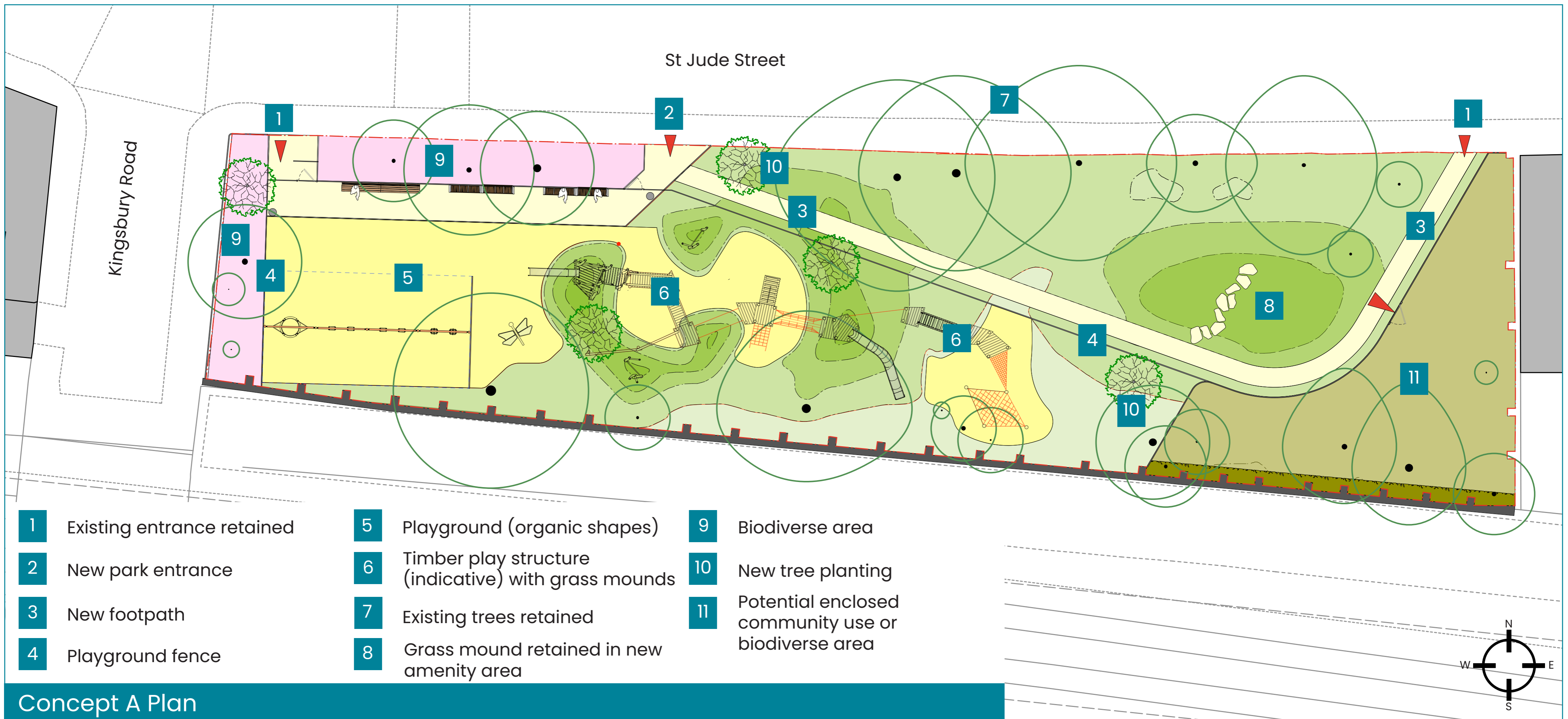
Design considerations

St Judes Street Garden is a small park, and therefore the following need to be considered as part of developing design concepts:

- The park is narrow in width.
- The existing trees are to be retained, including protecting the tree roots which extend into the grass mounds.
- There is limited visibility into the eastern side of the park (towards Dalston), which could be improved by removing the central hedge and lifting the canopies of adjacent trees.
- To promote sustainability, the ambition is to re-use hard surface construction within the existing playground as part of the works.



Concept option A



Organic playground idea with mounds



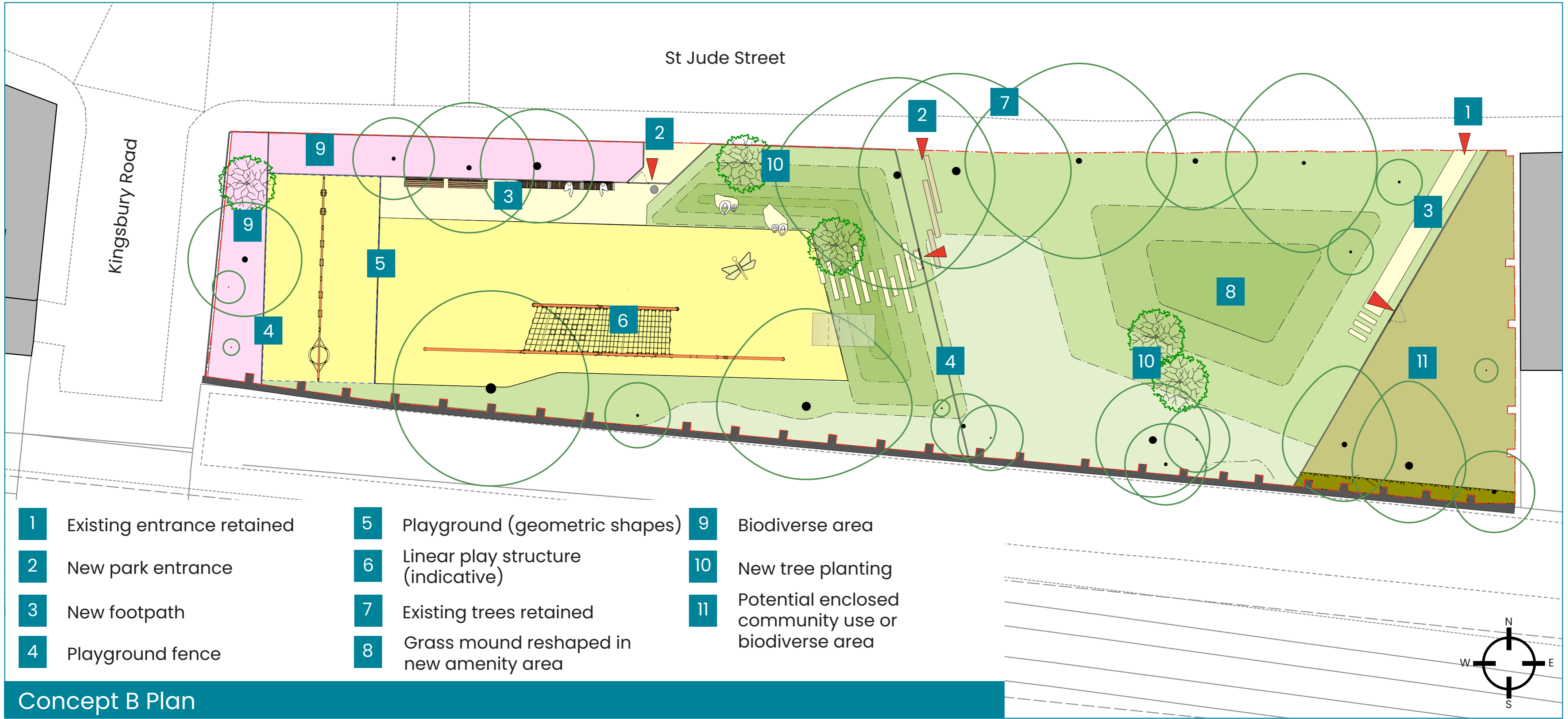
New amenity area including footpath



Ideas for enclosed community space



Concept option B



Geometric playground idea



Amenity area ideas



Ideas for enclosed community space

