

Domestic premises and asbestos

Advice for residents

As part of Islington Council's continuing commitment to safety, we provide our residents with information about asbestos-containing materials.

What is asbestos?

Asbestos is a naturally occurring mineral which was imported from Russia, South Africa and Canada. The rock is crushed and processed to produce long thin fibres and has been added to thousands of different types of building materials.

Why was asbestos used?

Asbestos has excellent tensile strength, is heat and fire resistant and in the past was relatively cheap to produce.

Possible location of asbestos materials

The Health and Safety Executive has estimated that over 1.5 million non-domestic buildings in the UK contain some asbestos. If domestic buildings are also taken into account then this figure is estimated at over 4 million. The diagram on the reverse of this factsheet shows where asbestos-containing materials are most likely located within buildings.

Is there a risk to my health?

Asbestos-containing materials which are in good condition do not pose a risk to your health. Try to ensure that anything you think may contain asbestos remains in good condition and is sealed with paint.

Damaged asbestos-containing materials can be repaired. Removal is generally a last resort.

Home improvements, repairs and DIY

Always refer to your tenancy conditions before carrying out any improvements, repairs or DIY. You may need to get permission from the council first.

Don't drill, sand or scrape anything you think may contain asbestos when you are carrying out any home improvements or DIY.

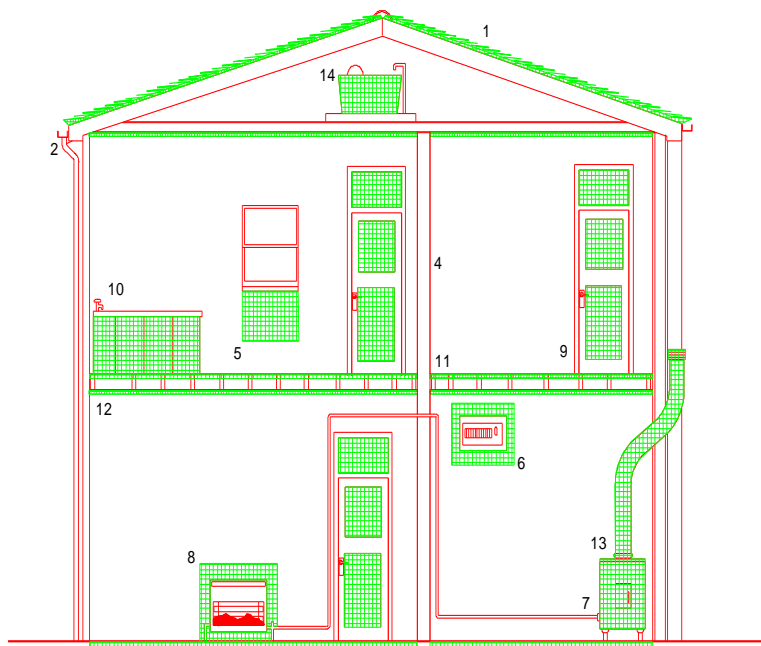
Always soak wallpaper before removing, if possible use a steam stripper and then gently peel away the paper before redecorating.

Don't try to remove textured coatings from ceilings. Wash any areas of flaking paint before repainting.

Don't try to remove old floor tiles or linoleum. Leave them in place and lay new floor coverings over them.

If you suspect that asbestos-containing materials have been damaged, please contact your local Area Housing Office.

Typical locations for asbestos-containing materials



Exterior

1. Roof sheets, tiles or roof felt
2. Gutters and downpipes
3. Fascia and soffit boards

Interior

4. Panels beneath windows
5. Cupboards around domestic boilers
6. Panels behind electrical equipment
7. Panels behind fires or heaters
8. Panels on or inside fire doors
9. Partition walls
10. Floor tiles and linoleum products
11. Textured coatings (Artex)
12. Gaskets inside gas appliances
13. Cement cold water storage tanks
14. Toilet cisterns and seats
15. Panels lining service ducts

Remember, asbestos-containing materials in good condition are SAFE.