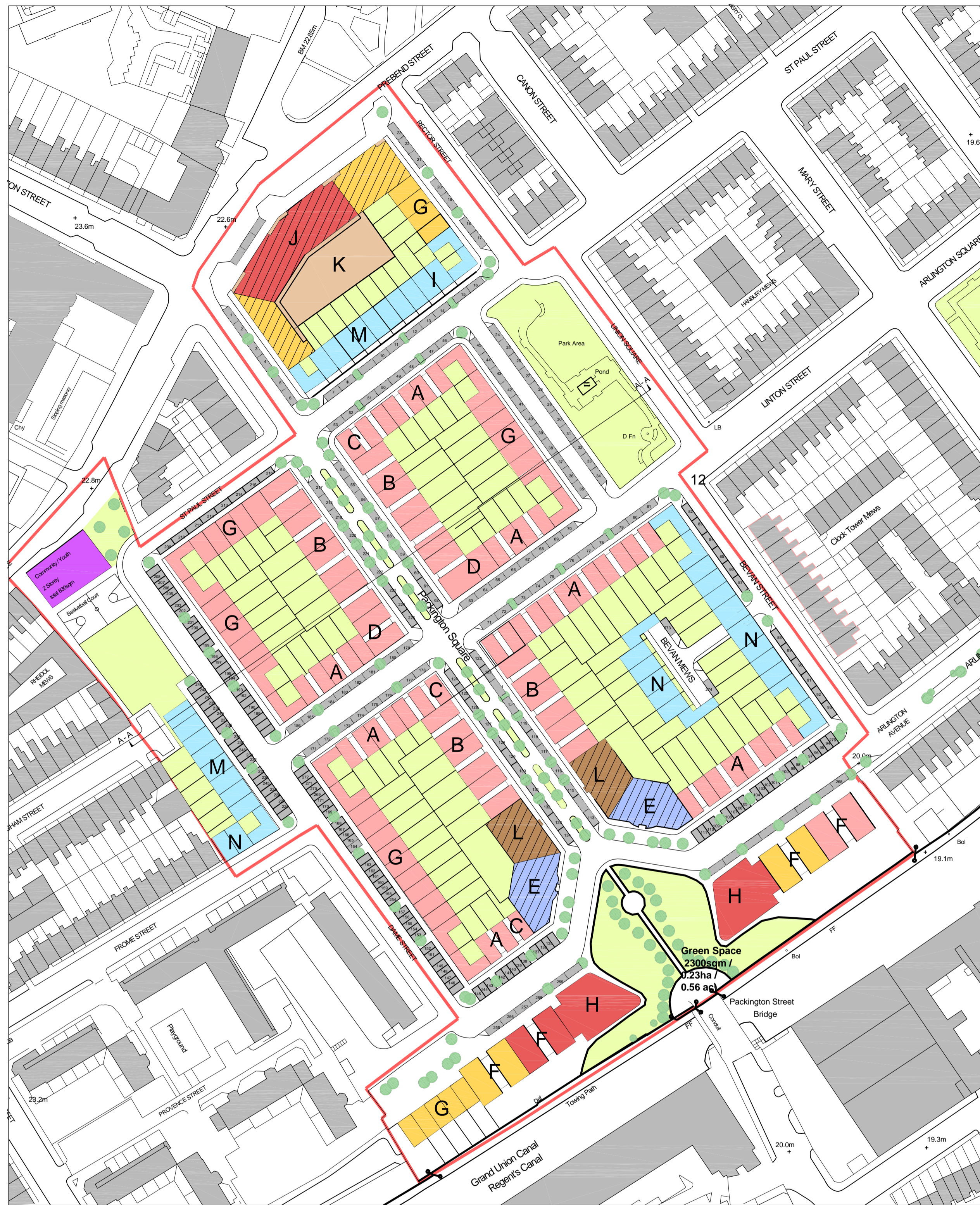
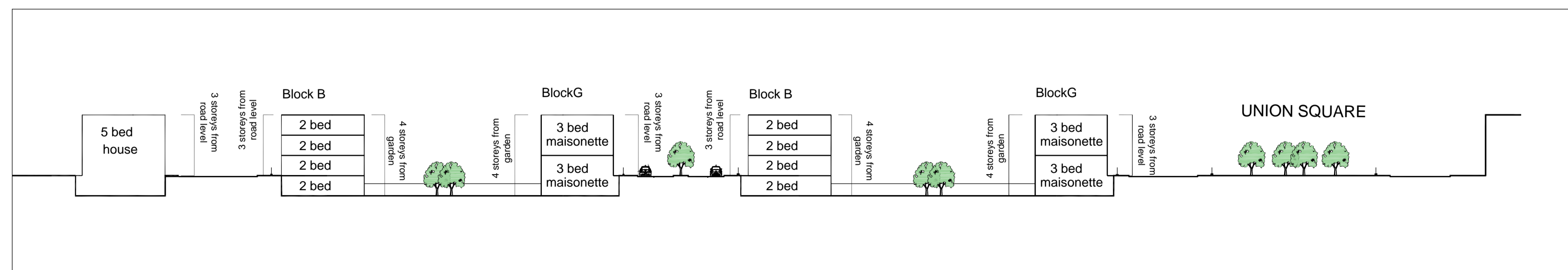


Packington Square Estate Fact Finding and Reasearch

Revisions



PROPOSED MASTERPLAN OPTION TM3 - Scale 1:1000 @A1 size



Section A-A Scale 1:500 @A1 size

- All storey heights given from street level
- 1 Storey Retail Units
 - 2 Storey Community Usage
 - 3 Storey Residential from Road Level (4 Storey from Basement Level)
 - 3 Storey Residential Town houses from Road Level
 - 4 Storey Residential from Road Level
 - 5 Storey Residential from Road Level
 - 6 Storey Residential from Road Level (7 Storeys from Basement Level)
 - 7 Storey Residential from Road Level (8 Storeys from Basement Level)

SCHEDULE OF ACCOMODATION

PRIVATE	AFFORDABLE
<p>BLOCK J (1no.) 3 & 4 storeys above shops 13 x 1 bed = 39 6 x 1 bed = 6 6 x 2 bed = 18 4 x 2 bed = 4 67 units</p> <p>BLOCK L (2no.) 7 storeys 2 x 1 bed = 28 2 x 2 bed = 28 56 units</p> <p>BLOCK E (2no.) 8 storeys 4 x 1 bed = 64 1 x 2 bed = 16 80 units</p>	<p>BLOCK A (21no.) 4 storeys 8 x 1 bed = 168 168 units</p> <p>BLOCK B (13no.) 4 storeys 8 x 2 bed = 104 104 units</p> <p>BLOCK C (3no.) 4 storeys 4 x 1 bed = 12 12 units</p> <p>BLOCK D (2no.) 4 storeys 4 x 1 bed = 8 8 x 2 bed = 16 24 units</p> <p>BLOCK F (4no.) 3,4 & 5 storeys 4 x 1 bed = 64 64 units</p> <p>BLOCK G (45no.) 4 storeys 2 x 3 bed maisonette 90 units</p> <p>BLOCK H (2no.) 5 storeys 4 x 2 bed = 40 40 units</p> <p>BLOCK I (4no.) 3 storeys 4 x 6 bed houses = 4 4 units</p> <p>BLOCK K Retail 1 Storey 736sqm</p> <p>BLOCK M (14no.) 3 storeys 14 x 5 bed houses = 14 14 units</p> <p>BLOCK N (25no.) 3 storeys 25 x 4 bed houses = 45 25 units</p>
<p>Required units Total 2 bed =200 Total 1 bed =0</p>	<p>Required units Total 6 bed =4 Total 5 bed =14 Total 4 bed =25 Total 3 bed =90 Total 2 bed =155 Total 1 bed =250</p>
<p>Provided units Total 2 bed = 66 Total 1 bed =137</p>	<p>Provided units Total 6 bed =4 Total 5 bed =14 Total 4 bed =25 Total 3 bed =90 Total 2 bed =160 Total 1 bed =252</p>
<p>Total units= 203 private homes</p>	<p>Total units= 545 affordable homes</p>
<p>4 Car club spaces for Private Sale</p>	<p>271 Car Parking Spaces for Affordable</p>
<p>Green Space adjacent to Canal Existing Area = 2300sqm Proposed Area = 2300sqm</p>	

- Key Points**
- Block J is part 5 storeys - this does not comply with the Adopted Planning Brief
 - Blocks A, B, C, D, G, I, M & N are double aspect and maximum 4 Storey
 - All Ground Floor flats have their own private entrance off the street
 - No. of Flats to a staircase
Block A = 6 Flats
Block B = 6 Flats
Block C = 3 Flats
Block D = 9 Flats
Block F = 8 to 16
Block H = 16
 - All 1 and 2 bedroom accommodation are flats
All 3 bedroom accommodation are maisonettes
All 4 bedroom accommodation are houses
All 5 bedroom accommodation are houses
All 6 bedroom accommodation are houses
 - All maisonettes and houses have their own private entrance off the street
 - Accommodation on the Canal frontage are single aspect
 - Lifts will be required in Affordable Blocks F (5 Storey) Block H
 - All private accommodation is single aspect
 - Relationship between Blocks E and A requires improvement