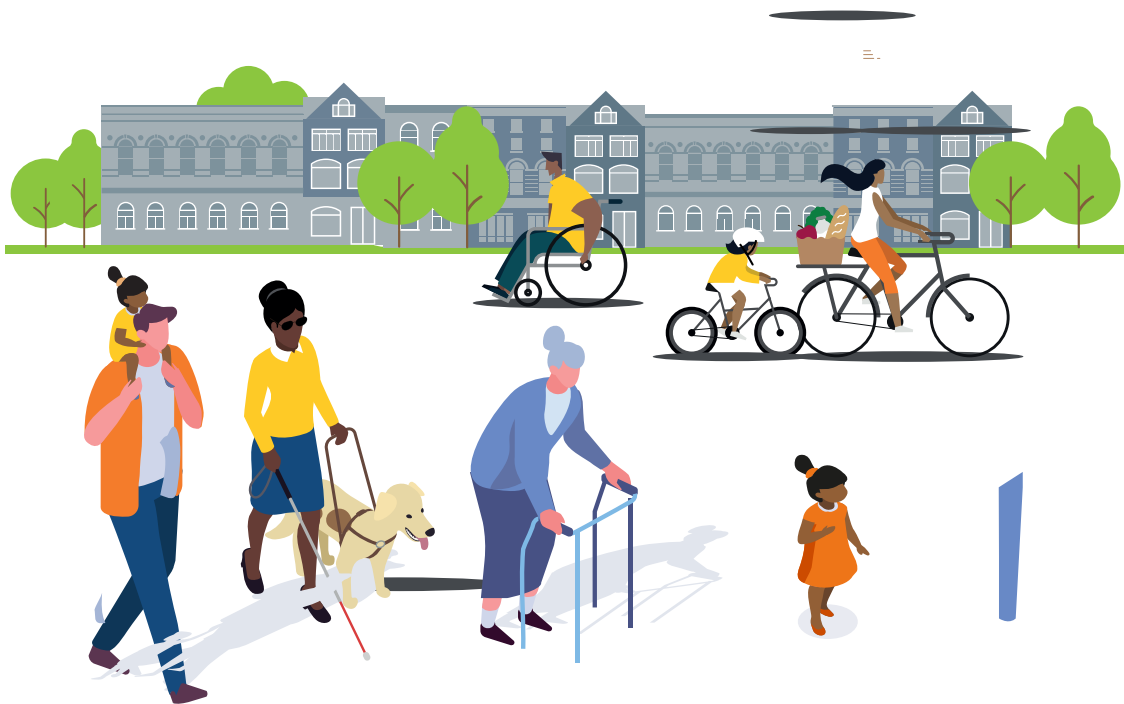


Proposals for transforming historic Clerkenwell Green

into a greener, more welcoming public space



Introduction from Cllr Rowena Champion, Executive Member for Environment, Air Quality and Transport

Dear resident,

I'm delighted to let you know about our plans to take forward major improvements to Clerkenwell Green – one of the borough's most historic, popular spaces – as part of our mission to create a cleaner, greener, healthier borough.

As well as boosting biodiversity and improving air quality we will also make the Green more attractive for the many local people that use it every day.

The plans will build on the changes already underway through the Clerkenwell Green low traffic neighbourhood (LTN). Our ambition is to make the area quieter, easier and safer for local people to walk, cycle and use buggies and wheelchairs to get about.

Please read on for an update on the LTN scheme as well.

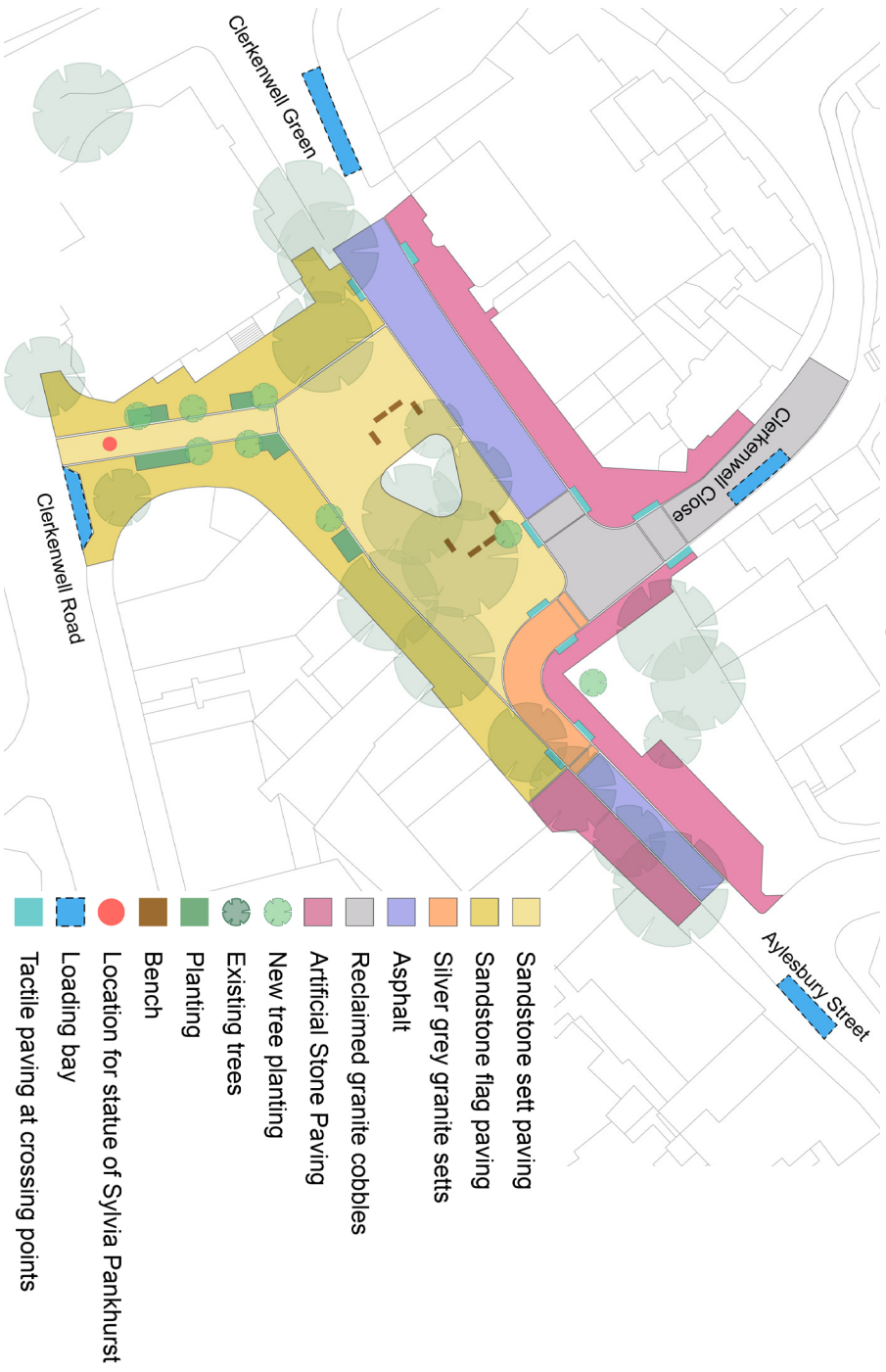
How we plan to transform Clerkenwell Green

Back in 2017, we consulted on proposals to improve the Green. The scheme was supported by 82% of respondents. So we will now be taking forward the following changes:

- planting seven trees and introducing low level planting on the Green.
- replacing some existing paving and creating more public space with new Yorkstone paving, providing an additional 1,700 square metres of public space (a 68% increase in public space and a 51% reduction in road space).
- making it quieter, easier and safer to walk, cycle, and use buggies and wheelchairs by closing the junction of Clerkenwell Road and Clerkenwell Green to motor vehicles.
- removing 43 parking spaces and one motorcycle stand.
- ensuring that more people can enjoy the historic space by introducing four new benches.

Please note that the granite seating steps included in the original design will not be installed due to budgetary constraints.

Map 1 - Clerkenwell Green public realm improvements



Work on bringing this exciting vision to life will start in February 2023 subject to the approval of a Traffic Management Order and is expected to be completed by the summer.

To accommodate these changes, the bus stands on Clerkenwell Green will be relocated to Farringdon Lane, requiring the removal of five parking bays.

The existing bus stand on Farringdon Lane will remain in its current location. These changes are shown in Map 2.



Map 2 - Farringdon Lane bus stand relocation

Next steps for the Clerkenwell Green low traffic neighbourhood

The low traffic neighbourhood was introduced in the area in September 2020 as an 18-month trial.

In March 2022 the council made a decision that the neighbourhood will remain in place permanently, following monitoring and public consultation. The Blue Badge holder exemption that was introduced to make it easier for disabled people to travel will also remain permanently.



To view the full final monitoring report, visit our website or scan the QR code:

<https://islington.gov.uk/peoplefriendlystreets/clerkenwellgreen>








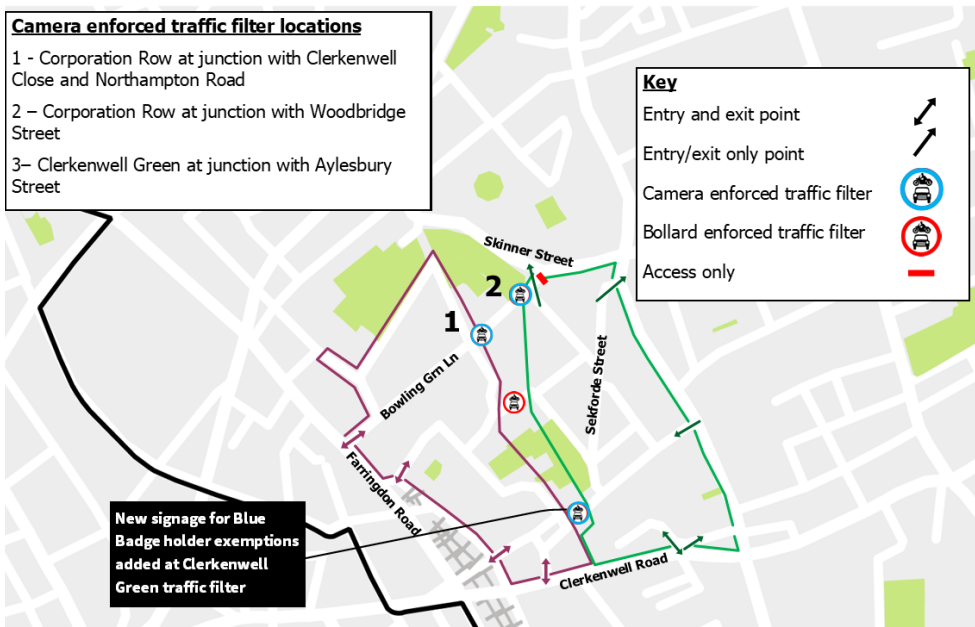
We are now proposing to change the bollard traffic filters on Clerkenwell Green to a camera-enforced filter, which can be driven through eastbound only, by Blue Badge holders who hold the 'CGE' permit.

Camera enforced traffic filter locations

- 1 - Corporation Row at junction with Clerkenwell Close and Northampton Road
- 2 - Corporation Row at junction with Woodbridge Street
- 3 - Clerkenwell Green at junction with Aylesbury Street

Key

- Entry and exit point 
- Entry/exit only point 
- Camera enforced traffic filter 
- Bollard enforced traffic filter 
- Access only 



We are proposing to continue the Clerkenwell Green PFS neighbourhood Blue Badge holder exemption on a permanent basis and deliver public realm improvements from February 2023, finishing in Summer 2023, subject to consultation on making a Traffic Management Order (TMO). To make an objection please send it to us in writing between 6 January 2023 and 27 January 2023 by:

Email: publicrealm@islington.gov.uk

Post: Public Realm, 1 Cottage Road, London, N7 8TP

Get in touch

If you have any questions or comments about these changes, please:

- Email clerkenwellgreen@islington.gov.uk or
- Write to us **Public Realm, 1 Cottage Road, London, N7 8TP.**

To find out more about our people-friendly streets programme please visit: www.islington.gov.uk/peoplefriendlystreets

Do you need this information in another language, or reading format such as Braille, large print, or Easy Read? Please contact us at clerkenwellgreen@islington.gov.uk

Yours sincerely,



Councillor Rowena Champion

Executive Member for Environment, Air Quality and Transport