

Cultivate a Garden: Design and Craft Activity

**The Liliesleaf Trust UK
Anti-Apartheid Legacy:
Centre of Memory and Learning
at Penton Street**

Project Background

The Liliesleaf Trust UK is creating a Centre of Memory and Learning (CML), within the former headquarters of the African National Congress (ANC) at 28 Penton Street, Islington. The CML will be dedicated to the heritage of the South African liberation struggle, international solidarity with racial injustice and anti-apartheid activism.

The CML will be a new space for London, rooted in effective collective action that promotes freedom, equality and democracy. The legacy of anti-racist and social justice activism will inspire us to continue to work together to make future fairer for all and demonstrate how change is made possible. Highlighting the contributions of Black, Asian and people of mixed heritage to the struggle is central to the CML's mission as is supporting learning from and about diverse and inclusive histories.

A Community Learning Garden

Islington has the 2nd lowest amount of communal and green space of any London local authority. Integral to the CML (home to themed exhibitions, a struggle and liberation archive and meeting spaces) will be a publicly accessible community learning garden.

Embedded in many African cultures is the ritual of gathering outside, sometimes under a tree or in a boma (a sheltered place for communal eating, story-telling and decision making). In many villages across South Africa, and the wider continent, justice is sought, discussed and delivered under the oldest, largest tree, such as the Boabab, Marula or Mopane.



Proposed Penton Street front and community learning garden





Logo of the post-apartheid Constitutional Court of South Africa
www.concourt.org.za

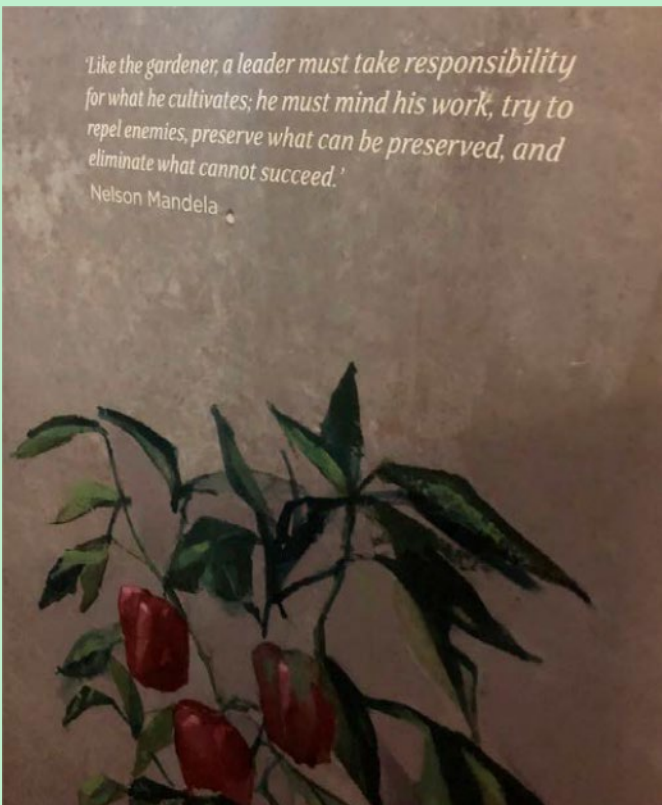


Image courtesy Nelson Mandela The Official Exhibition /
 Easy Tiger Creative / The Liliesleaf Trust UK

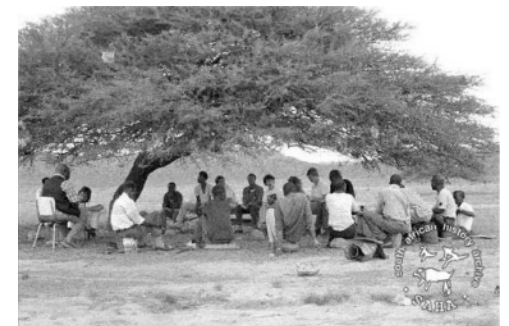
Johannesburg is the seat of South Africa's post-apartheid Constitutional Court. It is built on the site of one of South Africa's most oppressive jails where political prisoners like Nelson Mandela, Mahatma Gandhi, Fatima Meer, Albertina Sisulu and others were held.

The Court's logo (shown) shows eleven figures, representing the eleven official languages of South Africa. It gives parity to all peoples in the land, visually representing 'justice under a tree'. As leader of the ANC, Nelson Mandela became South Africa's first democratically elected President in 1994. Prior, he had spent 27 years as a political prisoner.

From 28 Penton Street, campaigns were launched to free him (and others), whilst other campaigns rallied ordinary people in anti-apartheid activity, lobbied governments and coordinated international anti-apartheid pressure.

In prison, as in the rest of South Africa at the time, people were segregated by race and privileges (including, for example, amounts of food given at meals, comfort of bedding, distance learning opportunities and access to sport for health) were allocated on a sliding scale depending on the shade of your skin colour.

Whilst a prisoner himself on Robben Island, Nelson Mandela began a campaign to improve conditions. At first, he was placed in solitary confinement for his efforts. But his talent for negotiation and conflict management shone through and gradually the prison authorities listened. His efforts included setting up and maintaining a small kitchen garden on the island. This provided a place to uplift physical and mental wellbeing and (when the prison guards left them be) a space to talk and make plans.



Meeting under a tree, SAHA - South African History Archive

Activity Task

Your task is to design a community garden for the Liliesleaf Trust UK's proposed Centre of Memory and Learning (CML).

Local communities will be able to discover the rich history of anti-racial, equality and inclusion activism at the CML. We are looking for garden design ideas that reflect this and which inspire us to continue to work together to make the world a better place.

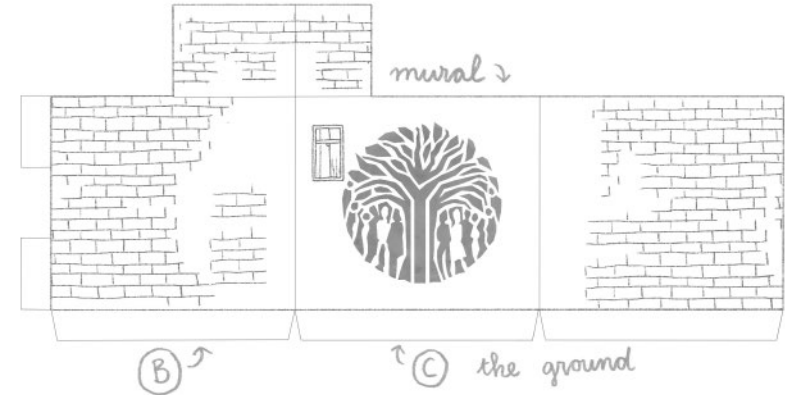


Age: 10+

Time: 2 hours+

Your design could be a collage, sketch or even a 3-D model. It should include seating for groups, a tree to gather under and around (maybe a real tree or perhaps a sculpture), somewhere to plant flowers/veggies and, if you like, a space for a mural or wall mosaic.

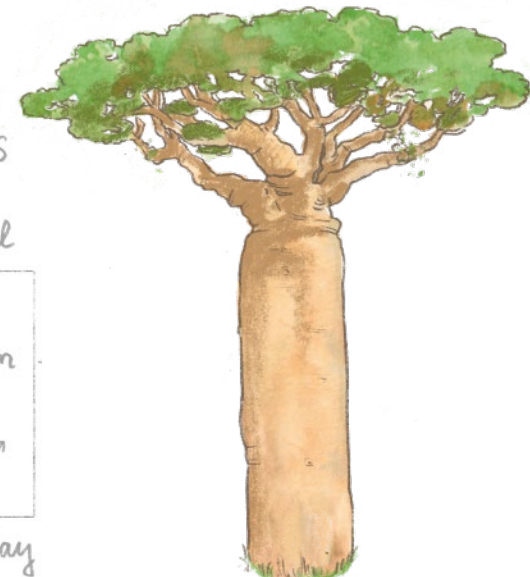
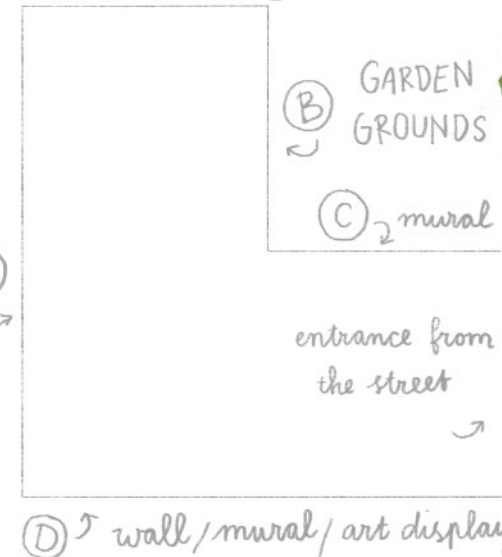
The illustrations here are inspired by South African culture, plants and trees.



back entrance (A)



wall (E)



Choose

1) Option 1: a drawing or collage using the floor plan of the garden space. Print or draw your own space (See Garden Plan PDF for dimensions).

OR

2) Option 2: make a 3-D model of the garden space enclosure. Draw your own walls (dimensions on PDF) or print the Elevations PDF to make the model.

You might like to watch our project supporters Hannah, Asad and Akeal creating their garden designs in this video: <https://tinyurl.com/CMLgarden>

What you will need

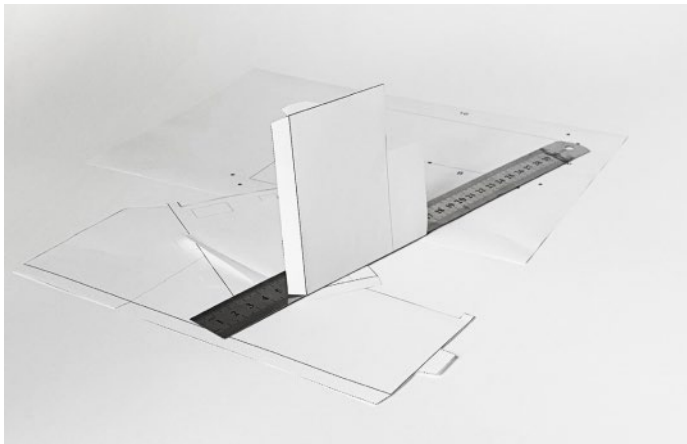
Use whatever materials you can find at home. Here are some suggestions:

- Pencils / crayons
- Ruler and paper
- Scissors & glue
- Coloured paper / old magazines
- Cardboard or something rigid to be used as a base
- Printer for printing elevations – or you can draw these by hand



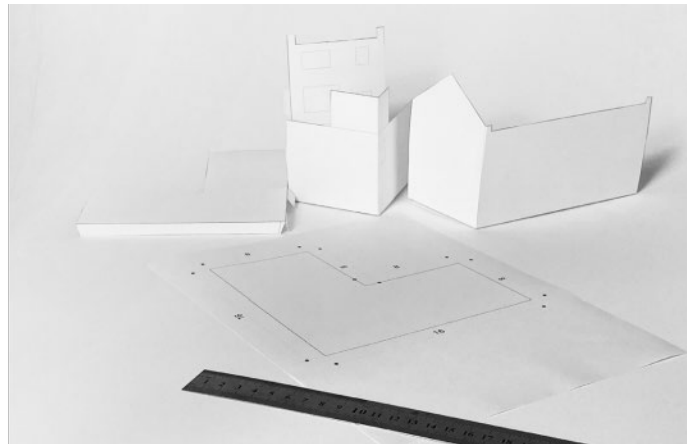
Step 1

Cut out the shapes and fold the edges using a ruler.



Step 2

Try putting together each side without gluing them. Once done, put them to one side and move on to making the base.



Step 3

Find a piece of cardboard. Stick on the plan, to have a firm base for your garden.



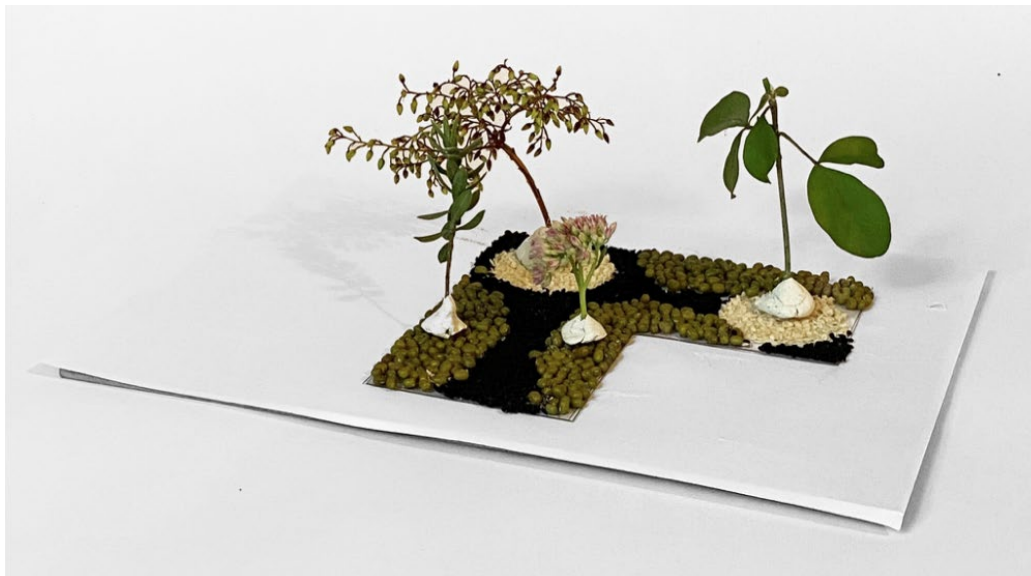
Step 4

You can use rice, grains or any seeds, to create the landscaping and pathways. Experiment! Leaves work well too.



Step 5

Glue the pots to your garden, wherever you like.



Step 6

Use clay, plasticine or blu-tack to make pots for your trees so they can stand.



Step 7

Finish your garden with colourful plants and seating

Step 8

Glue the shapes to the sides.



Step 9

Photograph and submit your design.



Share your designs with The Liliesleaf Trust UK at:
antiapartheidlegacy@gmail.com

Twitter @PentonStreetCML
Facebook @AntiApartheidLegacy

Illustrations: Hannah Botma
Design Imagery & Model Garden: Al Jawad Pike
Activity Resource: The Liliesleaf Trust UK