

Top tips



- keep your rent account clear. If you are experiencing problems please speak to your housing officer, as it may prevent your exchange going through.
- if you have questions about Housing Benefit, talk to the Islington Benefits Team on **020 7527 4990**.
- if you want to secure that move, really promote the benefits of your home to the prospective tenant

If you have a viewing:

- have a spring clean. Polish windows, vacuum carpets and tidy up balconies and gardens.
- try to have your home looking neat and de-cluttered. Clear the work-tops and floor space so it looks as spacious as possible to the prospective tenant.

Doing these small things could really make a big difference to the tenant viewing your property.

If you would like this document in large print or Braille, audiotape or in another language, please contact 020 7527 4140.

The Housing Options Team
Housing Aid Centre
38 Devonian Road, London, N1 8UY
T 020 7527 4140 F 0207 527 4136 **Minicom** 0800 073 0536
E rehousing@islington.gov.uk **W** www.islington.gov.uk/housing



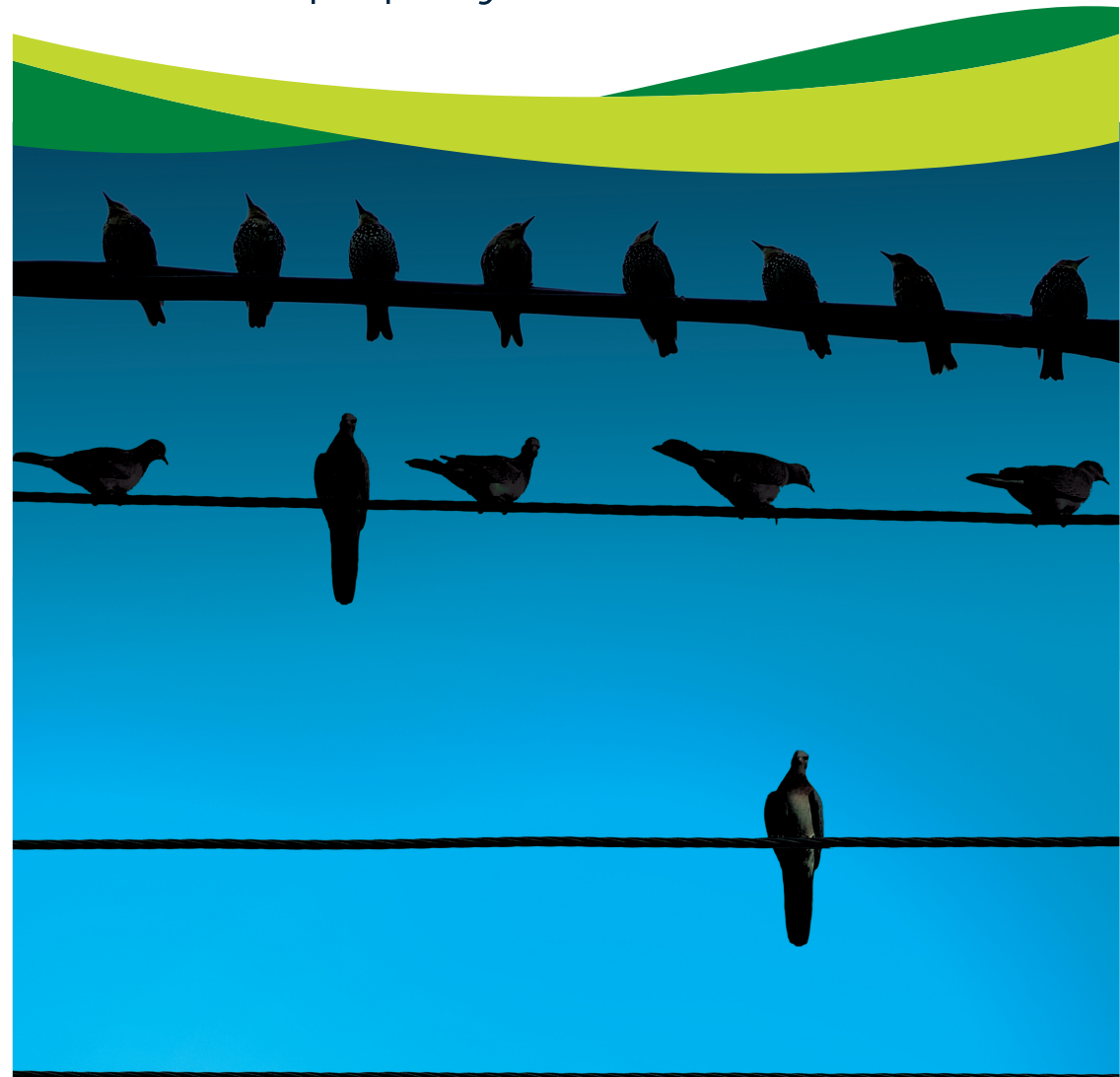
Printed on environmentally friendly paper. Published November 2009.

www.islington.gov.uk

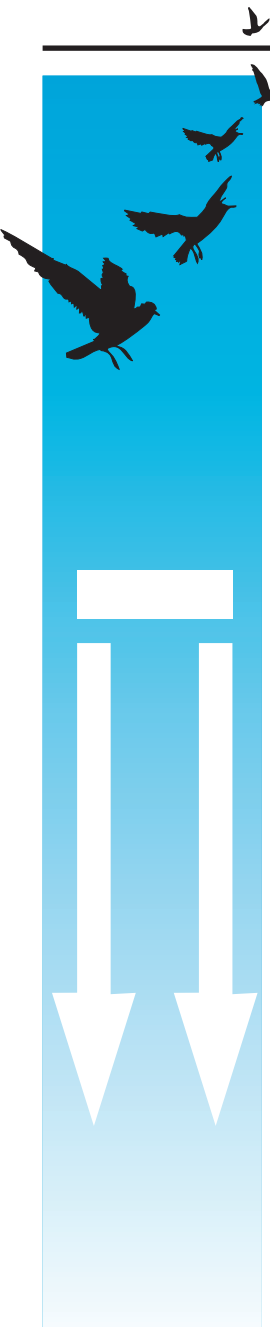
 **ISLINGTON**

Smart Move

We can help you move to a smaller property



Do you want a smaller property?



If you live in a property with more bedrooms than you need (under-occupy) then Islington's **Smart Move** scheme could be for you.

Smart Move helps to match people living in overcrowded properties with under-occupying tenants, to arrange a mutual exchange.

Contact the Housing Options team on 020 7527 4140 for help advertising your property.

An advert is placed alongside the Homeconnections advert, listing details of the property and the type of home the under-occupying tenant is looking for.

If you really want to move, then you have to be


realistic. Most people want a garden, a ground floor property or a low rise or street property, so these properties are in great demand.

Islington Council tenants can express an interest in the property if they feel it's suitable to their requirements. The Housing Options team can help arrange a viewing.

Securing a move to a smaller home is more likely if you will accept a similar type of property to the one you are currently in. For example, if you are in a high rise property on a high floor it would improve your chances of moving if you would accept a move to the same type of property.

If both sets of the tenants agree to exchange they must apply for and then fill in an Islington Council **Mutual Exchange Form**.

Why try Smart Move?

- 
- you are entitled to the under occupation grant if you exchange with an **overcrowded** Islington Council tenant. This is currently £500 per bedroom you give up plus up to £300 for removal costs
 - these properties would not be available through Homeconnections therefore increasing the number of properties available to you
 - it is still possible to underoccupy your home, for example, a couple currently residing in a 3-bed property would only qualify for a 1-bed on Homeconnections. However, moving by mutual exchange permits an extra bedroom so you may still be able to exchange to a 2-bed property
 - you can negotiate with the other tenant what is left in the property, such as carpets and curtains. Properties accepted through Homeconnections generally come without carpets, curtains and other furnishings.



Please note: Your personal details are not given out.

