

www.islington.gov.uk



ISLINGTON

Edition 6 Summer 2009

eyes magazine





Introduction

Summer 2009

by Cllr Terry Stacy, Leader of the Council

I'm delighted to be able to introduce myself to you all as the new Leader of Islington Council. Some of you probably already know me, as I've been a councillor here since 2002, Lead Member for Housing and Community Safety since 2006 and a resident for over ten years.

Islington is a great place – I love its diversity, its energy, and I couldn't imagine living anywhere else. It's without doubt a better place than it used to be and with our record recycling rate and acclaimed work to tackle climate change, we're well on our way to becoming one of the most environmentally friendly places in the capital.

Without doubt we couldn't do this without you. Your commitment to working with us to make Islington greener, cleaner and safer has helped us achieve what we have over the last few years, and I'm hugely grateful to you all. Your input also means that we know what we're getting right as well as what we still need to be doing better.

I'm proud that there has been an 11 per cent drop in waste over the past year, but I know from you that we still need to do more. That's why 'Lets Waste Less' will be the theme of this year's Recycle Week from 22-28 June, and we'll be using the week to encourage all our residents to play their part in limiting the amount of waste we all send to landfill.

Reducing waste doesn't just help the planet - it can also save you money, something that's more important than ever in these difficult economic times. You can find out what you consume by borrowing one of our energy meter kits for free from the Central Library. You'll get to see what appliances are using the most energy, and what you might be able to turn off to reduce your bills and your carbon footprint. Speak to our Green Living Centre if you'd like some more information.

This years summer edition of the Eyes magazine is full of news stories and articles to get you involved in projects we're planning to run – such as our new Food Growing

Fund - Edible Islington, which aims to develop opportunities for food growing across the borough, as well as promoting the production of and access to locally produced food to help social wellbeing, healthy living and sustainability.

Other things to look out for in this edition include; details on the new organic café at the Ecology Centre, and how to measure your energy use along with a bumper list of events you can attend.

I don't want to be a Leader who's stuck behind my desk at the Town Hall. My aim is to get out there, talk to residents, and hear what you think about what we're doing. I look forward to getting to know more of you when I'm out and about!

Terry Stacy



- 4 News and updates for the Eyes
- 8 Edible Islington
- 10 Helping to make Islington greener
- 12 A Safer Islington
- 14
 - Blooming Islington
 - Badly behaved dog owners
- 16 Your views count
- 17 Eyes Events Diary
- 20 Tips and advice
- 22 Get involved

News and Updates for the Eyes

The Organic Café at the Islington Ecology Centre, Summer 2009

This summer, the Ecology Centre and City and Islington College will launch a café at the Ecology Centre in Gillespie Park Nature Reserve one Sunday each month.



The Organic Café is run by students with learning disabilities from City and Islington College as part of a three year course. The practical focus is on creating healthy, organic, vegetarian food in a café setting. The course also runs a café at City and Islington's Finsbury Park branch as well as at various outside events. On completion of the course the students receive a BTEC in Skills for Working Life.

As well as enjoying delicious food, you can take a walk around the beautiful Gillespie Park and explore the Ecology Centre's many sustainable features including a wind turbine, solar panels and water recycling and get inspired to green your own home. You can also take a peek at the blue tits via the bird box webcam, get tips on how to encourage wildlife into your garden and pick up a wildlife gardening pack. ■

Organic café dates for summer 2009

Sunday 5 July, 12 noon-4pm

Sunday 30 August, 12 noon-4pm

Perfect for those wanting to escape the Bank Holiday hoards by enjoying the peace and tranquillity of Gillespie Park.

Sunday 13 September 2009

(as part of the Gillespie Festival)

For more information call 020 7527 4462 or email ecologycentre@islington.gov.uk



Kids close the compost recycling loop

Islington's Schools Food Waste service collects food waste from Islington's primary and secondary schools free of charge.

The food waste is taken to Edmonton Compost Park where it is turned into compost.



Islington schools received a special surprise last month when they saw what their kitchen scraps had turned into. Vegetable peelings and virtually all other food waste the school had produced had been, as if by magic, transformed into compost and returned to the school.



The 30 litre bags of compost were delivered to participating schools to visibly demonstrate to the pupils the closed loop of recycling.

Grafton Primary School was one of the schools who were keen to take advantage of the scheme and their head teacher Ms Theonitsa Sergides said "To be able to have our food

waste composted and not thrown to landfill is wonderful enough. The real icing on the cake was to be able to show the children what happens to the waste when it is composted and how we can re-use rather than waste our rubbish".

Residents can now buy the 30 litre compost bags for £3 from the Household Reuse and Recycling Centre in Hornsey Street. ■



Nippers' nappies demonstrated on Islington catwalk

Toddlers in Islington have taken to the catwalk to mark Real Nappy Week.

Youngsters demonstrated a range of real cloth nappies, sporting fashionable designs, at the borough's Ecology Centre.

Real nappies are cheaper and more environmentally-friendly than disposables, saving parents an estimated £500 in total for each child.

Nappies make up about two per cent of all the rubbish produced in the UK. By using real nappies, parents can really help the environment by reducing this waste.

Modern real cloth nappies are easy

to use, do not require soaking and can be placed in a washing machine between 40 to 60 degrees or taken to a nappy laundry service. They can be 'passed down' to siblings to save even more money.

Parents can apply for a £54 voucher which is redeemable at participating retailers, or nappy laundry services, at www.realnappiesforlondon.org.uk or by calling 0207 324 4709. ■



Don't be idle – switch it off!

Thoughtless drivers who leave their engines idling unnecessarily when they're parked up now risk a fixed penalty notice if they ignore requests from noise team officers to switch off. The council agreed to adopt legislation to cut noise and air pollution following complaints from residents about drivers who leave their engines running – in particular buses parked at bus stands. If you know of a particular hot spot where drivers leave their engines running whilst stationary let the noise team know on 020 7527 3258. ■

New Post Office for Highbury Corner

Plans for a multi-million pound makeover of Highbury Corner are back on the drawing board as architects are being appointed to design a new and enlarged Post Office building for the vacant site next to Marie Curie. Once completed, the existing Post Office will be demolished to create a new Station Square in front of Highbury & Islington Station.

In November 2008 we announced the results of public consultation on three options to improve Highbury Corner Roundabout. Consultation revealed that most local people wanted the 'western arm' of the roundabout to be closed off to general traffic. This option includes the relocation of the Post Office to create a new public space that extends from the station until the top end of Upper Street.

Construction on the new Post Office could begin as early as next summer 2010. ■



Food growing fund

The council has just launched its borough wide community food growing programme, **Edible Islington**. **Edible Islington aims to support as many of Islington's residents as possible to grow their own food. Growing your own food is a fun and cheap way of producing healthy food and anyone can get involved, it doesn't have to be complicated. It could be as simple as planting a few rows of lettuce to creating your own urban farm providing a source of fresh locally grown food right in the heart of the city. Food growing is also a good way to get fit and is a great way to bring the community together working on something from which everyone can benefit.**



Edible Islington aims to support community food growing projects on estates, in schools, on adventure playgrounds and in community gardens, in fact anywhere where food can be grown. Edible Islington could help your community group transform a forgotten corner of Islington. This could include growing food in raised beds on a disused car park or even creating an edible roof garden.

A number of exciting projects are already getting started. These include the extension of the community allotment at the St Luke's Centre in the south of the borough and new food growing areas on the Sickett and Holly Park estates. Pupils are also getting their hands dirty with Edible Islington projects already starting in six of the borough's schools.

Later in the year Edible Islington will see the transformation of an old car park at Quemerford Road, near to Holloway tube station, into a new permanent allotment for Islington's residents. Creating up to 15 new allotment plots the new site will be an exciting opportunity for food growing in Islington

As part of the Edible Islington programme both small and large grants will be offered to community groups for food growing projects. The small grants programme will be for projects between £200 and £3,000. Groups applying for larger grants will be supported by community food growing officers which will guide applicants through the development of their project >>

and the creation of their food growing space.

To help community groups in their food growing a number of courses, workshops and events will be run throughout the year as part of the Edible Islington campaign - many of which have already started. So even if your fingers aren't quite green yet there has never been a better time to get growing.

For more information on the Edible Islington programme and the Edible Islington food growing grants please contact Sandra Hoisz on **020 7239 1389**.



Helping to make Islington greener

Enterprise are go ...

A new contract was awarded to Enterprise at the start of the year to maintain all the parks and open spaces, the communal gardens in Homes for Islington estates as well as the roadside verges and roundabouts in the borough. As part of your work as Eyes for Islington, we have developed a system where you can get involved in the monitoring of this work and make a real difference in improving the green spaces.



Whilst being predominantly web based, access to the system can be by a variety of routes. It allows for real time information to be sent to the service providers and the client officers.

You could monitor just your local park or estate or any number of sites that you regularly visit – the choice is yours.

If this is something that you would like to know more about, please call **Martin Kalaher**, Performance and Improvement Officer on **020 7527 7224**. ■

eyesmagazine



Campaign to clear London litter gets underway

One thousand bags of litter were 'dumped' in Trafalgar Square in April to urge Londoners to join the capitals biggest clean up operation.

The three meter tall waste mountain represented 1% of all litter found on the capitals streets every day.

Organisers of the Capital Clean-up campaign hoped the public will be shocked into action as they view the untidy mess and sign-up for a clean-up event in their area.

Targeting litter, graffiti and grime, the Capital Clean-up is a direct approach to improving local environmental quality and the overall appearance of the capital in preparation for the 2012 Olympics. ■

Let's Waste Less during Recycle Week

'Let's Waste Less' is the theme for this year's Recycle Week, which runs from Monday 22 - Sunday 28 June 2009.

From starving your bin of paper, cardboard, glass, tins and plastic bottles to reducing food waste or composting at home, there are lots of ways we can all limit the amount of waste we send to landfill.

From recycling more of everyday items like glass, tins and plastic bottles to reducing food waste or composting at home, there are lots of ways we can all limit the amount of waste we send to landfill.

We're already making progress as a borough – thanks to your efforts Islington residents produced 11 percent less waste last year than in 2007/08. But, as the residents who took the Watch Your Waste Challenge showed last autumn, there is still much more that we can do.

So whether it's saying no to plastic bags, buying goods in less packaging or just recycling more, try doing what you can to waste less. ■

Recycle More

Run out of space for your recycling? You can order new recycling containers quickly and easily by calling **020 7527 2000**.

Recycle your food and green waste

When your food and green waste goes to landfill, it creates methane, a greenhouse gas twenty times more powerful than CO2. Turning it into compost stops this happening. Help stop climate change by recycling your food and green waste.

Check your labels

Major UK retailers are introducing new labelling on their packaging to help you identify whether it can be recycled. For more information on the new labelling, visit www.islington.gov.uk/recycling

Waste Less

Love food hate waste – The average household throws away £420 of food a year and most of this could have been eaten. To find out useful tips on the storage of food, tantalising recipes and advice on portioning, visit www.lovefoodhatewaste.com

Furniture reuse – We've launched a service to give unwanted furniture in good condition a new lease of life. Call **020 7527 2000** to arrange a free collection.

Freecycle – Freecycle is a website that allows you to get or give away goods for free in your local area. With nearly 9,000 members in Islington alone, there's always a bargain to be found! www.freecycle.org.uk



A Safer Islington

Islington's first smoke-free prosecution

A café on Stroud Green Road has become the first business in Islington to be prosecuted under the smoke-free legislation which came into effect across the country in July 2007.

Despite numerous verbal and written warnings from members of the council's environmental health team, the owner of Continental Café and Restaurant, failed to stop customers from smoking in a roofed customer seating area where a "smoking area" sign was clearly displayed.

The owner, who pleaded 'not guilty', was found guilty by the Magistrates and fined £1,000. He was also ordered to pay £700 in costs plus a £15 victim surcharge. If you suspect a business is flouting smoke-free legislation please contact the environmental health team on **020 7527 3816**. ■



Islington Police – know your rights

Islington Council is working with the police to make Islington a safer place to live, work and visit. If you are unhappy with the service you get from the police then we want you to tell them.

- Have you been a victim of crime and you don't know what is happening to your case?
- Do you know who to call if you are worried about anti-social behaviour or crime in your local area?
- Do you know who to complain to if you aren't happy with the police response?
- The police are not just an emergency service; do you know what you can demand from them?

The Police have recently introduced their Policing Pledge, which explains exactly what you should expect from your local police.

If you think your local police have not met their pledge, you should let them know by telephoning **020 7230 4737**. You can also leave a comment at www.met.police.uk/islington. Someone will get back to you within 24 hours. ■

Safer Roads in Islington

Islington's roads are safer now than in the year 2000 thanks to a number of successful road safety programmes.

Through a comprehensive Road Safety Programme, Islington Council have managed to reduce the number of people killed or seriously injured in road accidents in the borough to the lowest level in eight years.

This significant achievement in casualty reduction has been achieved through a road safety education and publicity programme, local safety schemes, 20mph zones, cycle and bus schemes and the highway maintenance improvements.

We have worked closely with our partners to ensure a coordinated approach to casualty reduction in the borough. During 2008/2009 we conducted a number of 'stop & advise' sessions with the police at key accident hot spots, targeting a number of different types of road users.

For more information on road safety schemes in Islington, please contact the Road Safety and Special Projects Team on **020 7527 2000**. ■



Year	Total number of people killed or seriously injured
2000	219
2008	75





Islington is blooming once more

Summer floral displays are now on show across Islington, bringing a dash of colour to the borough's streets.

As in previous years the council have installed baskets on lamp columns along Holloway Road, Highbury Grove, Blackstock Road, Caledonian Road, Upper Street, Camden Passage, Exmouth Market, Essex Road, Angel BID and Seven Sisters Road.

In addition this year, where possible, the council have extended the displays all along Goswell Road, City Road, Central Street, Green Lanes from Newington Green up to Petherton Road, around Newington Green and down to the junction with Essex Road, Junction Road from Cathcart Hill to Holloway Road and Stroud Green Road from the bus station to Hanley Road.

There are 1091 floral displays across the borough, which not only include

the lamp column baskets but barrier planters, tree planters, window boxes and flower towers.

Many sustainable methods have been used to install the floral displays, including using peat free compost and self watering containers.

Islington's floral displays will stay until mid-September and we are hopeful that these will help in the boroughs bid to win GOLD in London and Britain in Bloom.

Don't forget that there are ways in which you can get involved to help make Islington greener – such as planting your own window boxes, or even adopting a forgotten corner or piece of grass land in Islington. Why not visit www.islington.gov.uk/inbloom for more information. ■

Badly behaved dog owners fined £80

Since just before Christmas, Islington Council street wardens, Park Guard, Homes for Islington and other partners have been issuing £80 fines – fixed penalty notices – to dog owners.

So far we have issued 58 fines for people taking their dogs into areas where dogs are not allowed, 51 for dog fouling and five for dogs not being on a lead. Our staff and partners will warn you before fining you, but we will not tolerate dog fouling or badly behaved dog owners who ruin Islington's streets and open spaces for the rest of the community.

Residents are telling our staff, police and partners that one of the big issues in Islington is dog poo and dog anti social behaviour, we are tackling this, but we need you to help us. If you see a badly behaved dog owner – report them – contact **020 7527 2000**.

For better behaved dog owners, Park Guard – Islington Councils parks patrol – run Top Dog events in Islington parks, aimed at young people with dogs. Top Dog training shows young people how to control their dog, and teaches them how they can be better dog owners. The young people really enjoy the sessions, and the dogs are happier and better behaved with an owner who is confident in handling them. To find out more about Top Dog go to www.parkguard.co.uk or information on dogs www.islington.gov.uk/dogs ■



Your views count

How can we improve the EYE's magazine?

What would you like to see featured?

We asked you in the last edition to let us know how you think we can improve the magazine – but so far we have had very few responses.

This is your chance to tell us what you would like to read about. Would you like to get more involved?

We aren't proposing to change the structure of the magazine, but we really want to provide you with information that you want to read and know about.

So .. now is your chance to let us know how we can improve. Please contact Meg on the details below and tell us what you would like to read about. ■

Giant Green Business Awards

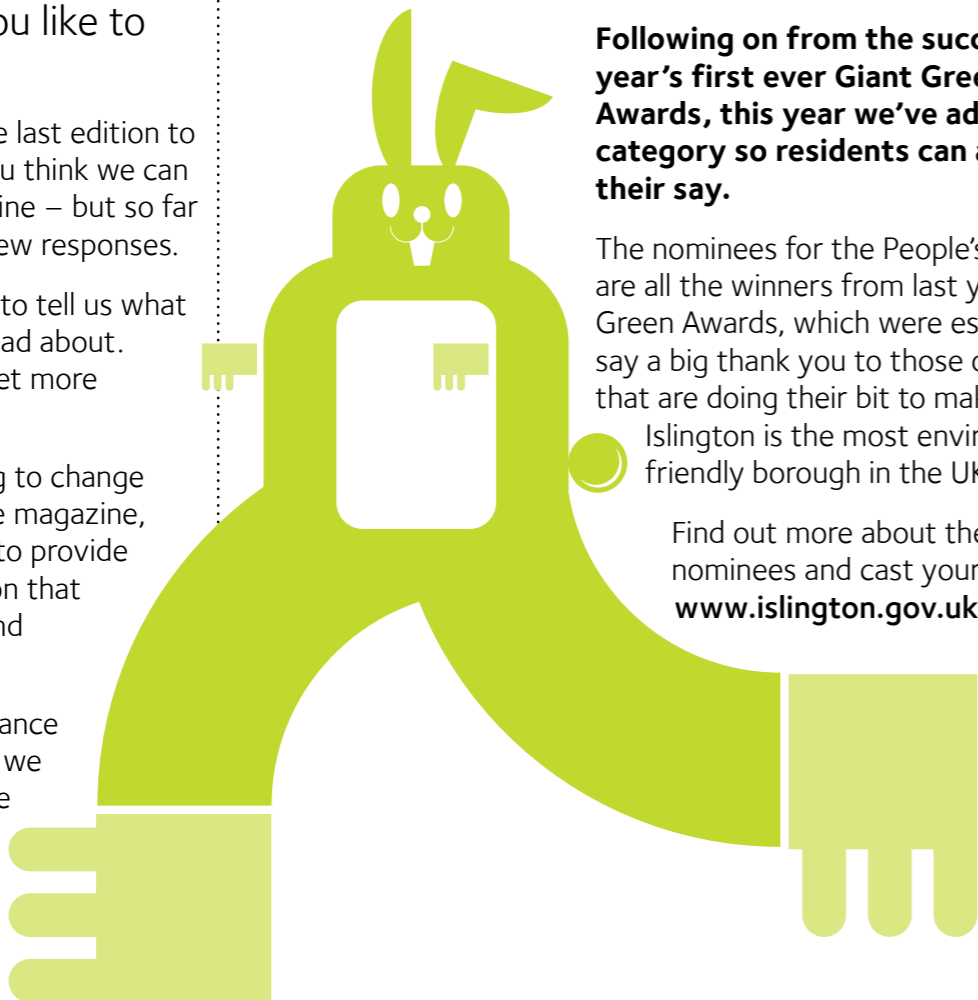
Who'll be the People's Choice? You decide!

Following on from the success of last year's first ever Giant Green Business Awards, this year we've added a new category so residents can also have their say.

The nominees for the People's Choice Award are all the winners from last year's Giant Green Awards, which were established to say a big thank you to those organisations that are doing their bit to make sure

Islington is the most environmentally-friendly borough in the UK.

Find out more about the nominees and cast your vote at www.islington.gov.uk/giantgreen. ■



Eyes Events Diary

Celebrating the history of Islington's Streets – Myddelton Square

Do you want to learn more about the history of the street where you live?

Join us in Myddelton Square on Friday 10 July to view displays exploring the history of the area, including information on:

- the impact of bombing on the square during World War II
- Sir Hugh Myddelton, who was famous for bringing fresh water to London
- the history of Saint Mark's Church

1.30pm Schools presentation by 'the History Man'.

2.30pm Commemorative stone unveiling to mark recent street renewals.

For more information call **020 7527 2466**, text **07826 904 605** or email public.realm@islington.gov.uk ■

Islington's Open!

So come on in and open your minds to the fantastic range of arts, sports and heritage that Islington has to offer.

Taking place over the weekend of 24 to 26 July, Islington's Open is the borough's contribution to the nationwide Open Weekend, a London 2012 cultural initiative to celebrate the countdown to the Olympic and Paralympic Games.

To find out which venues are getting involved and what activities they'll be putting on (most will be **FREE!**), check out www.islington.gov.uk/islingtonsoopen or call Olympics Officer **John Thorne** on **020 7527 7096**.



Radical Roots exhibition – Islington Museum

Did you know that Vladimir Lenin lived in Islington or that Britain's first black bishop was educated here in the early 19th century?

Radical Roots is a multimedia art exhibition created by young people from the borough, including use of digital art, music videos and radio programmes influenced by the radicals and their struggle for change.

Where: Islington Museum

When: 14 June – 6 September

The Museum is open every day from 10am to 5pm except for Wednesday and Sunday.

Cost: Free

For more information call **020 7527 3235** or email islington.museum@islington.gov.uk ■

Eyes Diary 2009

July	
Date:	Thursday 9 July 2009
Event:	Abandoned Vehicles: A day shadowing the abandoned vehicles team, starting from sighting to the collection of the vehicle.
Time:	11am–3pm (lunch provided)
Co-ordinator:	John Brown: Contract Monitoring Officer
Date:	Thursday 23 July 2009
Event:	Radnor Street Gardens /Duncan Terrace/Spa fields: Tell us your views on our parks, and the improvements we have made
Time:	10am–2pm (Transport and lunch provided)
Co-ordinator:	Stephen Crabtree: Projects and Development Manager (children welcome)
August	
Date:	Tuesday 4 August 2009
Event:	Eyes Engagement Day at Central Library We would like to give you the opportunity to meet other eyes member, and discuss with us the ways to improve the service the council provide.
Time:	11am–2pm (light refreshments provided)
Co-ordinator:	Fatma Mehmet: Eyes Scheme Coordinator
Date:	Wednesday 12 August 2009
Event:	London Waste Energy Centre (new trip) See how the Energy Centre produces enough electricity to power 66,000 homes as well as all the centres on the EcoPark.
Time:	10am–2.30pm (Transport and lunch provided)
Co-ordinator:	Megane Quashie: Eyes Event Coordinator

August	
Date:	Wednesday 19 August 2009
Event:	Connect2 Walk Walking from Parkland Walk down to Finsbury Park, we plan to enter the Gillespie Park extension and visit the Ecology Centre for a cuppa.
Time:	1pm–3pm (Transport and refreshments provided)
Co-ordinator:	Richard Meyers: Nature Conservation Ranger (children welcome)
September	
Date:	Thursday 10 September 2009
Event:	Highways Reactive Maintenance: A day following the highways team, and learning about how the streets of Islington are maintained, from initial telephone call through to the final pavement being put in place.
Time:	10.30am–2pm (lunch provided)
Co-ordinator:	Bob Aggar: Operations Manager

For more details and to book your place on any of the events above, please contact Megane Quashie on **020 7527 2284** or email meg.quashie@islington.gov.uk

For more general information on events in Islington (not specific to the Eyes members) you can always check the monthly "Out and About" pages in **IslingtonNow** and visit the council's website www.islington.gov.uk and click on the **What's On in Islington** link from the home page.

Tips and advice

Visit the Energy Doctor

Measure your energy – reduce your use

Ever wondered how much energy you are using at home?

Now you can find out for free by borrowing an energy meter kit from the Central Library. The energy meter can help you to find out how much energy you are using at any one time so you can switch unused appliances off to save money. The Energy Meter

can also be used to find out which appliances in your home use the most energy so you can reduce your use.

Bravimir Karaula, N7, said 'Our family is really into energy saving, we never even have electrical stuff on stand-by. This is a fantastic idea for helping you cut down on energy use, its great for saving money and the planet.'

For more information please call the Green Living Centre on **0800 953 1221**. ■



Keep it down this summer!

The council's noise team receives around 5,000 complaints about noise every year – on average that works out at about 15 per day (or night!). Not surprisingly loud music and noise from parties figure high on the list and during the summer months there is a significant increase in these complaints as people spend more time in their gardens. So, if you're going to be out enjoying the long summer evenings (we can but hope!), please spare a thought for your neighbours and keep noise at a reasonable level. ■

Don't be alarmed – save yourself up to £600!

If you have a burglar alarm that goes off whilst you're not at home, you can be sure one of your neighbours will report it to the council's noise team. And that could land you with a bill of up to £600 (the typical cost of officers being called out to gain entry to silence an alarm and employing a locksmith to replace the lock). For peace of mind, visit **www.islington.gov.uk/alarms** now and register details of who holds keys so they can be contacted in case of an emergency. ■

Getting Islington Working

Islington Council has launched a new service which will make it easier and less confusing for jobseekers looking for training or work.

The new service – known as Islington Working – offers workshops and advice on confidence building, CV writing and interview skills. It also offers help with finding training courses, apprenticeships, job vacancies and work experience.

Each year, the council already helps hundreds of people to boost their employment prospects and it now wants even more residents to take advantage of the help and advice on offer. The new service provides jobseekers with access to vacancies and training in a variety of industry sectors including construction, childcare, customer care, catering, security and retail. After the client has found a job, advisors are on hand to provide support for the first three months to make sure they settle in well to their new workplace.



As well as offering advice to jobseekers, who approach the council directly, Islington Working employment coaches also provide an outreach service and now regularly visit the Bemerton, Packington and New River Green estates to make it easier for the those who lack the confidence to approach the council directly.

If you're looking for a job, training or work experience get in touch with Islington Working. If you're worried about the cost of the call, let us know and we'll call you back.

T: 020 7527 4486

E: islingtonworking@islington.gov.uk

W: www.islington.gov.uk/islingtonworking

Get involved

Small Change Big Difference Week

13-19 July 2009

Everyone can help tackle climate change and reduce their carbon footprint. During July you can help make a difference by making small changes to your life that can make a big difference to the environment.

Four areas of action you can try at home are:

- Save energy and cut your energy bills.
- Get walking and cycling. This will improve your health too.
- Say no to bottled water and drink tap.
- Gardening for bees.

If you want to learn how a small change can make a big difference, then come along to one of the following events ➤

What's in a water bottle?

- Tuesday 14 July
- 5pm-8pm
- Green Living Centre

This event explores the hidden impacts of water use. Aimed at adults. Only 25 spaces available so booking is essential.

To book a place contact
020 7527 4462 or
greenliving@islington.gov.uk

Water bottle giveaway at the Green Living Centre

Water bottles and save-a-flushes will be given away all week in the Green Living Centre. Pop in, make a pledge and grab your free water bottle.

Green Living centre
222 Upper Street
London N1 1XR
Open 9am to 5pm

The centre will open late on Thursday 16 July 2009 until 8pm.

Bee and butterfly friendly plant sale

Drop into the Ecology Centre to buy nectar rich plants for your garden or window box plants. Open Monday to Friday throughout the week between 9am to 5pm.

Planting for bees and butterflies workshop

- Wednesday 15 July
- 4pm-6pm
- Ecology Centre

The mosaic of gardens across London acts as a massive 'urban nature reserve', but these areas are disappearing fast. Join us to plant a container with nectar rich plants that you can take home and make a big difference to bees and butterflies.

Suitable for young people accompanied by parents/guardians. Booking essential.

To book a place contact
020 7527 4462 or
ecologycentre@islington.gov.uk

Energy Doctor

- Thursday 16 July
- 5pm-8pm
- Green Living Centre

Visit the Energy Doctor for advice of how you can make small changes in the home that will make a big difference to your energy bills. No need to book, just drop in for a chat and a look around.



Take the 'Watch Your Waste' Challenge!

Do you recycle? Want to take the next step to a greener lifestyle? If so, take part in our second Watch Your Waste Challenge and discover how little rubbish you can produce for a week! Your goal - to aim for zero waste by only using things that can be reused, recycled or composted.

Last year's Challenge was a roaring success, as nearly 80 households cut their waste by an amazing 48 percent!

If you're interested in finding out more, visit www.islington.gov.uk/recycling or contact Michael Benn on **020 7527 2627** or michael.benn@islington.gov.uk



eyesmagazine

Edition 6 Summer 2009



ISLINGTON

If you would like this document in large print or braille, audiotape or in another language, please contact 020 7527 2000

Contact Islington

222 Upper Street

London N1 1XR

E contact@islington.gov.uk

T 020 7527 2000

F 020 7527 5001

Minicom 020 7527 1900

W www.islington.gov.uk

Printed on 100% recycled paper using vegetable based inks.

Published June 2009

Eyes for Islington Profiling data

Please complete the following monitoring information. This will enable us to ensure our records are up to date and that we can contact you if we need to.

If you do not want to answer any of the questions you can leave them blank and move on to the next question.

Please send back in the envelope provided or drop it off to Meg Quashie at Public Realm Division, Islington Council, 222 Upper Street, London, N1 1XR

Q1. If you know your Eyes for Islington reference number please enter it in the box

(If you don't know it leave the box blank and go to question 2)

Q2. What is your preferred title?

Mr Mrs Ms Miss Other

If you selected 'other' please write your preferred title here:

Your contact details

Q3. Your first name: _____

Q4. Your last name: _____

Q5. Your address: _____

Q6. Postcode: _____

Q7. Home phone no: _____

Q8. Mobile phone no: _____

Q9. Work phone no: _____

Q10. Email address (if you have one): _____

Thanks to those members who have completed this form. For those of you who haven't - please do as it helps us keep our records up to date.

About you

Q11. Are you:

Male Female

Q12. What is your date of birth? _____

Please enter as DDMMYYYY (e.g. 07051961)

Q13. Do you consider that you have a disability under the Disability Discrimination Act definition?

The definition of disability according to the Disability Discrimination Act 1995 (DDA), is: "A physical or mental impairment which has a substantial and long term adverse effect on his or her ability to carry out normal day to day activities".

Yes No

If you have indicated that you have a disability, please select the definition(s) from the list below that best describes your disability by ticking the appropriate box (or boxes):

Blind or visual impairment

Deaf or hearing impairment

Physical impairment

Mental health difficulties

Hidden impairment (such as cancer, HIV, diabetes etc)

Learning difficulties (including specific learning difficulties such as dyslexia and dyspraxia)

Any other disability or impairment

Prefer not to say

Your ethnicity

Q14. Which of the following best describes your ethnicity?

Asian Black Chinese Mixed heritage

White Other

And which of these white groups would you say describes you?

British Irish Turkish/Turkish Cypriot

Greek/Greek Cypriot Kurdish

Prefer not to say - White

Any other white background please write below

And which of these mixed heritage groups would you say describes you?

Caribbean African Somalian Eritrean

Nigerian Ghanaian Eritrean

Prefer not to say - Black

Any other African Background

Any other Black background please write below:

And which of these Asian groups would you say describes you?

Indian Pakistani Bangladeshi

Prefer not to say - Asian

Any other Asian background please write below:

And which of these black groups would you say describes you?

Caribbean African Somalian Eritrean Nigerian

Ghanaian Eritrean Prefer not to say - Black

Any other African Background

Any other Black background please write below:

And which of these other groups would you say describes you?

Vietnamese Filipino

Prefer not to say

Any other ethnic group please write below:

Q15. What is your faith, belief or religion?

I prefer not to say No religion Christian

Buddhist Hindu Muslim Sikh Jewish

Any other faith (please state below)

Q16. Finally, how would you describe your sexual orientation?

I prefer not to say / not stated Hetrosexual

Lesbian Gay Bisexual

Date of completion of this form (DDMMYYYY):

Thank you for completing this monitoring form.

If you have any questions about this monitoring form please contact Megane Quashie on **020 7527 2284**.

Any personal information you give us is held securely and will be used only for council purposes. Information that was collected for one purpose may be used for another council purpose, unless there are legal restrictions preventing this.

We are required under section 6 of the Audit Commission Act 1998 to participate in the National Fraud Initiative data matching exercise and the information held by the council will be used for cross-system and cross-authority comparison for the prevention and detection of fraud.