

IslingtonNow

Issue 5 June 2007

your local magazine from Islington Council

Power to the people!

Gas guzzlers: the environmental debate. Turn to p4.

Should the cost of a residents' parking permit depend on how much the car pollutes? We want you to decide.



We are giving you the power to vote on the future of residents' parking permit charges. We are proposing to turn parking charges green, but are we right to do so? Voting is your chance to tell us what you think.

The proposal is simple: owners of vehicles that pollute more will be charged more for their residents' parking permit, while those that pollute less will be charged the least.

Because this decision will affect everyone, whether or not you own a car, we are holding a referendum so residents can help us make this decision. Every single vote we receive will be counted, and the outcome of this referendum will be based on what you tell us.

MAKE SURE YOU HAVE YOUR SAY

Every Islington resident on the electoral roll will receive ballot papers through their letterbox this coming week. And to make voting as easy as possible you can have your say by phone, text, internet or post.

The results will be made public in early July. If you tell us you want to see green parking charges introduced, then that is what will happen. The final decision will be based on the results of the referendum, so every vote counts. If the vote is yes, the scheme will be implemented in September 2007.

So what will it be – yes or no?

Vote by noon 25 June 2007



INSIDE

2 **LETTERS**
Your letters answered

3 **NEWS**
Fantastic four for Arsenal Ladies

4 **ENVIRONMENT**
The gas guzzlers debate – how should you vote?

6 **SAFER ISLINGTON**
A great new scheme bringing together police and young people

7 **YOUR VIEWS**
The latest consultations

8 **IN FOCUS**
Help us shape the Islington of the future – and bag yourself £100!



10 **LOCAL LIFE**
We celebrate the borough's young achievers

11 **LIFESTYLE**
Join in the bike fun with Tour d'Arsenal

12 **YOUNG ISLINGTON**
A great experience for the borough's youngsters

14 **NOTICEBOARD**
Take part in our reader survey

15 **OUT AND ABOUT**
Summer fun for all the family!



Councillor James Kempton, Leader of the Council, answers your letters...

I've made listening to what residents have to say about life in Islington, and what the council can do to improve it, top of my priorities. That's why I became a councillor in the first place.

I can't promise to solve every problem - especially when different residents have different views - but as Leader of the Council I do promise to read and consider all your letters carefully and get the council to help wherever it can.

Send your letters to:

Cllr James Kempton, Leader of Islington Council
IslingtonNow, Town Hall, Upper Street, London N1 2UD
Email: islingtonnow@islington.gov.uk
Phone: 020 7527 3416

Letter of the month

Missed collections

I read that Islington's recycling rate is rising. My neighbours and myself reckon it could be a lot more if the collectors actually came on the days they are supposed to.

Ms N James, N1

There's no real excuse for us missing the collection day for bins or recycling but I know that over Easter some people had their rubbish collected later than usual. We do try to keep any disruption to a minimum during bank holidays,

which is why all collections stayed the same for the latest bank holiday, but if there are going to be changes we need to make sure we publicise them well in advance.

I am not convinced that the council and our waste contractor ICSL have got things quite right yet but we are working on it. You can help us by calling Contact Islington on 020 7527 2000 if a collection is missed, and we will make sure that a missed collection is dealt with by the end of the next working day.

Food waste dilemma

I live in a small flat in an estate in Islington and am trying to find environmentally friendly ways to dispose of my food waste. I was very disappointed to learn that I can't have a brown box as I am not on a street property and there are no facilities for food waste at the otherwise impressive recycling centre on Hornsey Street. I have nowhere to put a composter, or a garden to use the compost it would produce, so what do you suggest? Is it not possible to provide a space on estates that composts food waste which is then used in the borough's parks and green spaces?

Heather Erulin, N19

I can appreciate the dilemma you're having here. We want everyone to have access to the same recycling facilities, wherever they live, but it's taking some time to get there.

We are currently trialing kitchen waste collections on two estates in the borough, and the initial results are really positive. We've also got a great scheme running on one estate where a special 'rocket' has been installed that composts residents' kitchen waste on site.

We're running these trials first to see how popular and effective they are with

Placing more bins in residential streets seems to me a simple matter with minimal cost implications

residents. If the results are good, then we'll look at rolling this system out to other estates in the borough.

In the meantime, there's something a little bit different you could consider - a wormery! They offer a really easy and efficient way to turn food waste into compost that you can use on house plants as well as gardens. Although you might need some convincing, you can actually buy small ones designed to be kept indoors for less than £50. Visit www.westcountryworms.co.uk or call 01803 712738 - they offer a great discount to Islington residents.

Bin appeal

I'm concerned about the lack of bins in the borough. I live in Highbury and there is only one bin from Highbury Corner to Framfield Road. This bin is regularly full. Placing more

bins in residential streets seems to me a simple matter with minimal cost implications. It would do much to enhance the environment.

Ian Kelly, N5

We have spotted this problem too. With more people using Highbury Fields, and the new Arsenal Stadium, there are definitely more people in the area you highlight, which in turn increases the litter problem. We will be installing more bins in this area soon. We're also planning to put in some more recycling bins on the streets.

I'm not sure if you took part in our cleaner, greener day in Highbury Fields last month. Our environmental officers were on hand all day to give out leaflets and discuss problems with people, and we also hope the event helped to educate people in the borough about their responsibility to do their bit. We can now target any grot spots that people highlighted on the day.

DON'T FORGET TO VOTE! Listening to Islington is my priority, and that's why we want everyone in the borough to have their say in the gas guzzlers referendum. Every vote counts so please use yours - look out for your ballot papers this month. There's more information about the vote on the cover and page 4 of this magazine.

PICTURE OF THE MONTH



Noah Ashplant and Rosa Makadonis from Grafton School admire the new garden in the Nag's Head, which is part of a bigger clean up of the area. Four business parking bays have been installed, while Bowman's Mews and Hercules Place now have new lighting and a brighter, cleaner look.

If you would like IslingtonNow in large print, audiotape, or another format, please call 020 7527 3416

IslingtonNow is printed on 100% recycled paper. Please use your green box to recycle IslingtonNow when you have finished with it.

Contact us:

IslingtonNow, Town Hall, Upper Street, London N1 2UD
Email: islingtonnow@islington.gov.uk
Phone: 020 7527 3416

Tell us what you think of IslingtonNow - contact us at the above address or drop us an email
Please include your full address on all correspondence. Anonymous letters cannot be published, but names and addresses can be withheld on request.
We cannot guarantee to publish all letters received, and we reserve the right to edit letters for both length and content.

Common sense parking charges

From 1 July, parking tickets issued for serious or dangerous parking infringements will cost more than those for less serious contraventions. So, parking on a double yellow line will cost £120 (£60 at discount) while a ticket for overstaying in a pay and display bay will cost £80 (£40 at discount). This means that a lot of parking fines are actually falling in price as all tickets previously cost £100 (£50 at discount).



For detailed information see the Public Notices insert in this magazine.

A golden future!

A 'topping out' ceremony has taken place to celebrate the progress in building the new Golden Lane education campus for children.

The new campus will bring together children from Fortune Park Children's Centre, Prior Weston primary school and the primary department of Richard Cloudesley School for pupils with physical impairments.

The traditional 'topping out' ceremony takes place when construction of a new building has reached its highest point. To mark the occasion, a yew tree is planted which will then grow with the building.

Despite the discovery of a burial ground at the site, work has continued and the new campus will open next April.



Anne Corbett, head of Richard Cloudesley, Caron Rudge, head of Fortune Park, Mary Caven, head of Prior Weston and Helen James of Fortune Park help to plant the new yew tree

IN BRIEF

Protect our borough!

Do you know what to do if you think your neighbour might be flouting planning regulations? We want to protect the character of the borough, so if you think a listed building is being damaged or a protected tree is being cut down, please let us know.

For more information, call 020 7527 2000 or go to www.islington.gov.uk/planning

New look for refuse vehicles

Keep your eyes peeled for Islington's refuse vehicles, which have a brand new look. The fleet has new signs that promote Islington's reduce, reuse and recycle messages. So keep a look out for the vehicles on Islington's roads this month!

Make your business greener!

Islington Business Partnership is running a lunch seminar for businesses to learn about green marketing and PR. The seminar is at 12.30pm on 15 June.

For more information, call Janet Cardell on 020 7527 1765 or email janet.cardell@islington.gov.uk

Top award for ScootAbility

ScootAbility, our scooter loan scheme, has won an award for the most innovative transport project at the London Transport Awards. The scheme is run by Camden and Islington Councils for permanent residents aged 16 and over who have impaired mobility or are housebound due to a disability.

For more information email scootability@camden.gov.uk or call 020 7974 2039 or 2420.



Learning for free!

You can learn a lot this summer by enrolling on one of the free adult education courses being run at our online centres around the borough.

If you've been out of work for a while and want to learn new skills, or update existing ones, this could be the perfect solution. With everything from IT, maths and English through to dance, animation and film-making, there is something for everyone.

Islington's online centres have the latest technology including interactive whiteboards, printers and broadband. And the centres are connected via a network so users can move from one centre to another to continue their learning.



For more information contact the council's adult and community learning team on 020 7527 5782 or email acl@islington.gov.uk

did you know?

The youth club on the Andover Estate has been refurbished and is complete with new IT and multimedia equipment. The centre is now fully accessible and all residents can come along.



Fantastic four for Arsenal Ladies

Congratulations to Arsenal Ladies, who achieved the incredible feat of lifting four cups in one season. To celebrate this amazing achievement, the team will be awarded Freedom of the Borough and have their names listed in gold at the Town Hall.

The Ladies completed the quadruple by winning the FA Cup and the UEFA Cup, adding to their league and league cup titles.

Should the polluter pay?

From unseasonal weather to news headlines, there is no escaping the impact of climate change. And calls are growing for everyone to do their bit to help the planet.

We all have choices to make about how we can contribute to becoming greener. The council has already established the Climate Change Partnership and a £3million Climate Change Fund to support projects that improve energy efficiency. But if we want to do more to make a difference then our choices become tougher.

We are proposing to charge owners of gas guzzling cars

more for a parking permit, and less for those with eco-friendly cars. And we think it's right that you help us decide.

As with any issue there are always two sides, both supporters and opponents. IslingtonNow has asked two industry experts from opposite sides of the climate change debate to help you make up your mind.

Vote yes or no? It's up to you...



VOTE - YES

Nigel Underdown, Head of Transport Advice, Energy Saving Trust

I think residents should vote yes.

Residents should be rewarded for running greener cars as they are doing the right thing. Many people will actually be paying less for their parking permits so this is a really positive idea.

Realistically the actual environmental impact of this will be small, and on its own it won't make much of a difference. But it is a really good start. It will help to raise awareness of this issue and, combined with other measures designed to reduce CO₂ emissions, this is exactly what is needed.

There is an argument that big families or businesses need these bigger gas guzzling cars. But this simply isn't the case - people do not have to have these cars. You can buy big executive seven seat vehicles that are more environmentally friendly than 4x4s. The only people that can really justify needing these vehicles are people on farms or in very rural areas. There are some great alternative options for large vehicles that do not fall into this band.

We have carried out research on energy efficiency and 71 per cent of people believe that local authorities should take the lead on climate change. And with this referendum, this is what Islington is working towards!

VOTE - NO



Roger Lawson, London Region Coordinator, The Association of British Drivers

I think residents should vote no.

Taxing people with bigger cars will have a minute, negligible impact on the environment. And many people who don't have cars or don't need parking permits will vote in favour, so they are basically voting for other people to be taxed. Is that fair?

You could propose to tax diesel cars or older cars, but this is not a fair way to do things either, and a lot of people who may be in favour of this vote would probably object to the proposals if they were slightly different.

How many people in Islington own bigger cars? Those that do may well need them for their businesses and if they have larger families. And if they need their vehicle for work or to travel with their family, then this is unfair.

Drivers already get taxed a lot, and in fact people who own 4x4s are already taxed based on this, and they have to pay more for their petrol. So there are incentives already for people to buy smaller cars if they can.

There are better ways of tackling CO₂ emissions - there are other areas that have a much stronger impact on pollution in London.



“We're not always trouble!”

We'll help with

- training
- 24 hour support
- allowances up to £408 per week

Foster a teenager with Islington

0800 073 0428
or email us at fostering@islington.gov.uk
www.islington.gov.uk/fostering

ISLINGTON

38kg

the amount of newspaper the average person gets through each year

20

tonnes of useful items saved by the halls of residence reuse scheme last year

5

Find out more

There is more information available about the green parking permit scheme on www.islington.gov.uk/parkingvote. The website contains more information about the issue, a more extensive list of vehicle examples and answers many questions you may have.

You can also find more information on the debate on The Carbon Trust website - www.carbontrust.co.uk - and The Association of British Drivers website at www.abd.org.uk

“Are we right to make the polluter pay more and everyone else pay less?”

Coming through your letterbox – your chance to vote

Everyone on the electoral roll will receive a ballot pack (pictured) between 4 and 7 June. It explains how to cast your vote. If you don't receive one and think you should, please contact Electoral Reform Services on 020 8889 9203 or email customerservices@electoralreform.co.uk



Students get top marks for reuse

Students in our 13 university halls of residence are cutting out the waste by taking part in a reuse scheme.

Each summer as students leave their accommodation, thousands of useful items are thrown away. This new scheme ensures that these items aren't binned, but are instead

donated to local charities. Items include clothing, kitchen equipment, furniture and electricals.

This successful and innovative scheme saved almost 20 tonnes of useful materials from the skip last year and aims to save 30 tonnes this year.

WILD ABOUT ISLINGTON

You can take a look at nature in action thanks to a new birdbox at Islington Council's Ecology Centre. Visitors and staff at the centre have been watching a blue tit that has built a nest and laid eight eggs in a birdbox at the centre. And anyone can take a look by viewing the live webcam at www.islington.gov.uk/tsg/birdbox.htm

The box was put up at the centre in February as part of National Nest Box week to demonstrate what people can do to help the borough's wildlife. Artificial nest boxes provide the perfect home for many breeding birds.

Helping blue tits



Keep your business moving

A new scheme is offering the perfect solution to local traders that need occasional transport to help them run their businesses. The Streetvan scheme enables local businesses to rent a van by the hour or day for £6.95 per hour.

The brand new Volkswagen Transporter van has an all-zone parking permit, so it can be parked in any residents' or business parking bay in Islington.



Streetcar staff Jonathon Hampson and Suyin Du Bois

To find out how to book the van, phone Streetcar on 0845 644 8475 or email services@streetcar.co.uk.

For information about the Keeping Businesses Moving Forum, please contact Jon Little on 020 7527 8017 or Emily Auton on 020 7527 2617.

Food for thought

Get online before you eat out! A new website, www.scoresonthedoor.org.uk, shows the food inspection information for food businesses in London so you can be sure that where you're eating is clean and safe.

For more information please contact the Commercial Environmental Health Service on 020 7527 3816 or email commercial.envh@islington.gov.uk



did you know?

The Household Reuse and Recycling Centre had 568 visitors on 1 April 2007, the highest daily total so far this year.

One breed of bird that really benefits from people putting up bird boxes are blue tits. They like to nest in holes in trees or walls, so they take to nest boxes if they are positioned in a good spot. They use all sorts of materials to build their nests, including feathers, hair and wool.

The blue tit that has made her home at the Ecology Centre spent two weeks building her nest in the box at the centre.

Now her eggs have hatched, the young birds will stay in the nest for around 16-22 days and will be fed by the mother and father. The young will also develop their first set of feathers.

Once the young blue tits have left the nest, they will stay near to their parents for a while, who will carry on feeding them.

For more information about nest boxes or wildlife in the borough, contact Islington Council's Nature Conservation Team on 020 7354 5162 or at ecologycentre@islington.gov.uk

Breaking the Barriers



Reaching out to young people on estates is a big challenge, but a new project is aiming to break down the barriers that exist between them and the police.

Islington's estates are not places you would expect to find groups of young people carrying out role plays and exercises with the borough's police. But this is exactly what has been happening on the Bemerton, Packington and Elthorne estates.

Breaking the Barriers is a project that aims to help young people understand the work the police do, how to work with them and what their rights are – as well as what the police's rights are.

Over the course of six two-hour sessions, young people confront real life issues and scenarios with youth workers and police officers. In one session, the police worked with the youngsters to talk about stop and search, why it's important and what to do if you are stopped and searched.

POSITIVE FEEDBACK

Around 60 young people have now taken part in the sessions and almost all of them have

left their contact details to get involved in similar initiatives, a great step forward in building positive relationships between the police and young people. Kane Bramble, 14, is one of many who had positive feedback about the events: "It's true that some young people cause trouble, but adults have the wrong impression of most of us. Sometimes at night I get scared walking around too. These sessions have taught me how the police should act towards us as citizens – but I now also know how to act if the police approach me. Now I know what they're like, I'd consider becoming a police officer."

Karen Poole has been working as a police community

support officer for four months, and she says sessions like this are great for young people and the police. "Projects like Breaking the Barriers are so useful, they really help to challenge negative views of young people and the police. We know for some young people it's not cool to like the police, but we want to engage with them and to show them a different side to the police.

"It's good to listen to young people and their opinions, and I've certainly learnt a lot. They're lovely kids and we've built up a strong relationship during these sessions. Where anti-social behaviour is concerned, it's important to remember that adults are often worse offenders than young people."

“It's true that some young people cause trouble, but adults have the wrong impression of most of us. Sometimes at night I get scared walking around too”



For more information on Listen Up, which leads the Breaking the Barriers project, call Dan Firth on 020 7833 1388, email listenup@islington.gov.uk, or go to www.islington.gov.uk

D-Day for dodgy DVDs



In the last six months, Street Trading and Bunhill Safer Neighbourhoods Police Team have seized 651 counterfeit DVDs, 97 illegal computer software CDs and other illegally sold goods including cigarettes. A number of illegal traders have also been cautioned or prosecuted.

Remember, illegally sold and counterfeit goods may not be the bargains they appear:

- DVDs often do not play properly
- cigarettes can contain health-damaging toxic chemicals
- computer software may contain viruses that could ruin your PC.

If you wish to report illegal street sales contact Islington's Street Trading service on 020 7527 3830.

PCSO Samson Fadoju and PC Sejal Unadkat of Bunhill Safer Neighbourhoods Police Team with a bag of seized illegal DVDs



YOUR VIEWS

65%

residents that preferred a sack for recycling their green waste

7

Talk to us...

The council makes a lot of decisions for the community, but we don't want to make them without knowing your thoughts and views on issues that may affect you and your area.

Below is a list of consultations that you can contribute to. You will be able to find out more on the council website. Consultations are open to everyone unless specified.

Islington – Looking Forward

Islington is working on its community strategy for the next 10 to 15 years. We want your views on what you think the borough should be like and what our priorities should be to make it happen.

Please see our feature in the middle pages of IslingtonNow – respond and you could win £100!

Consultation open to: everyone who lives, works or visits the borough

Running from: 1 to 23 June

www.islington.gov.uk/islingtonstrategicpartnership

Live Long and Prosper

If you are aged 50 and over, or approaching 50, we would like to hear your thoughts and views on a range of topics. This includes what you would like to do, how you can get involved with the local community and what services could help you. We've compiled a questionnaire to give everyone in this age group the chance to give us his or her views.

We are also holding the My Generation festival from 16 to 23 June, and everyone over 50 is invited to come along to join in a range of activities. The festival will also give you the opportunity to tell us what you think about provisions in Islington for the over 50s.

Consultation open to: anyone nearly 50 or over 50

Running throughout June.

For more information, or to receive a questionnaire, please call Antonio De Gregorio on **020 7527 8198**, email antonio.degregorio@islington.gov.uk or go to www.islington.gov.uk/livelongandprosper

Childcare for Islington

Can you find a childminder or place at a nursery, breakfast or after school club, adventure playground or holiday scheme at the right place, time and price for you? Islington Council wants to talk to residents, parents and children about issues relating to childcare in the borough.

We will be running focus groups and undertaking face-to-face interviews, or you can complete our online survey which will be available from 1 July.

Further details will be available in the July issue of IslingtonNow.

If you would like to be involved please email marnie.caton@islington.gov.uk or phone Children's Information Services on **020 7527 5959**.

Consultation open to: all Islington residents using or needing childcare

Running during July 2007

Survey of Londoners

Every year, over 1,000 Londoners are asked about their attitudes to local services and their council. The results are useful to us, as we can see how your concerns compare to those across the capital.

Crime was mentioned as a personal concern by just over half (52 per cent) of Londoners, while the health service and council tax were mentioned by just over a quarter. In Islington crime and litter are consistently high on the list of concerns, with fewer people mentioning council tax or the health service.

Refuse collection was rated as good or excellent by 71 per cent of Londoners, with street lighting and recycling also scoring well. Islington residents also rate these services highly when surveyed. Londoners were much less satisfied with parking services and the condition of roads and pavements, with over a quarter rating each service as poor.

About two thirds of Londoners said their council had friendly and polite staff (68 per



The survey shows that many Londoners are pleased with their councils



cent), kept residents informed (68 per cent) and was doing a good job (67 per cent). Londoners who live in inner London boroughs, such as Islington, tended to have a more positive image of their council than those living in outer London boroughs.

Survey of Londoners 2006-07 is available at www.londoncouncils.gov.uk



It's in the bag!

We offer a weekly collection of green garden waste from all kerbside properties across the borough. Currently residents place their green garden waste out for collection in opened refuse sacks.

In an effort to raise the profile of the service and to improve the service for both residents and collectors, a pilot scheme has been

conducted in Tufnell Park to give residents a choice between wheelie bins and reusable garden sacks for their garden waste.

124 properties received a brown wheelie bin for their garden waste whilst the remaining 358 properties each received two reusable garden waste sacks. Excess garden waste could be placed out for collection in opened refuse sacks to enable flexibility.

After two months a door to door and postal survey of residents were undertaken. 206 residents replied (a

response rate of 42 per cent).

65 per cent of respondents preferred reusable sacks whilst 24 per cent preferred wheelie bins. Other residents preferred another type of container or home composting. Reusable sacks will be introduced across the borough this year.

Everyone who took part in the consultation was entered into a prize draw for an organic vegetable box, which was won by Alison Tyabji (pictured).



To view all current consultations, go to www.islington.gov.uk/consultation

Annie Doubledee, centre, with Ghislane and daughter Lalla-Hiba, and Ssang Yee and daughter Kate



Everyone can help to shape the future of Islington.

Future aims

For their “Islington – Looking Forward” plan the ISP has decided their three key objectives for the next 10–15 years.

→ 1. Reduce poverty

The gap between rich and poor in the borough is extremely wide. We want to make a difference by getting more people into work, improve social housing and help young people in the borough. What else do you think we should be doing?



Everyone needs to be able to access good quality childcare, training opportunities and the chance to get a good job



A better future for all

The Islington Strategic Partnership (ISP) brings together, amongst others, the council, the Primary Care Trust, police, local businesses and community groups to share knowledge and expertise to make Islington a better place to live, work and visit.

The partnership funds programmes as diverse as Smokefree Islington, sports co-ordinators in schools, the Climate Change Partnership, outreach for homeless people and help for people on incapacity benefit to get back into work. Now the partnership needs your help.

The ISP is working on a long-term plan, to cover the next 10–15 years, on how they can make Islington even better, and the partnership wants to hear from everyone that lives in the borough to help them put together this plan.

This new plan will help the ISP to allocate funding to programmes and schemes that are important to Islington residents, so it is vital you tell us what you think.

MAKING A DIFFERENCE

Annie Doubledee, director of the Islington Childcare Trust and an ISP Board member, says: “By filling out this questionnaire, you can help improve things for everyone, and can really make a difference. It’s your chance to tell us exactly what you think and have your say. “It can be easy to think that some of the things that go on around us are not our problem. But they will affect someone we know or one of our loved ones. We have to think about the wider community and what can be done to help them. And by improving things for people around us, we can help to build stronger communities, which ultimately benefits us all.”

The ISP supports the Islington Childcare Trust, which helps to get mothers back to work. It can be difficult for mums to go back to work soon after having children, and many mums need help and support to get back into the workplace. The

Islington Childcare Trust offers many mothers this lifeline. “It’s a myth that women don’t want to work and that they are happy to be on benefits,” says Annie. “I have never met one mum who thinks that way. In fact they are really desperate to get back into work because they want to be good role models to their children, but it can be really tough for some people and they may need some extra help.”



Making Islington a better place to live

Ruth Hayes, centre director of the Islington Law Centre, knows how important it is to support local people. She says: “Many people in the borough have lots of really good ideas about how it could be an even better

place to live, and by filling in this questionnaire, you can help prioritise and plan what the partnership will be doing in years to come. “If you are interested in how services will be provided for people like you, and facilities in your

local area, then please take part. It is important that a wide range of people, from different age groups and different parts of the borough, take part so we know what changes would really make your life better in future.”

84% of Islington 16 year olds continue education and/or training

67% of people trust their neighbours

→ 2. Improve access for all

We think everyone is entitled to support and services. We want to remove the barriers that may stop some people from getting the help or service they are entitled to by delivering better services and making them easier for everyone to receive. Have we got this right – what do you think?

→ 3. Realise aspirations

We want everyone to have the chance to reach their full potential, regardless of their background. We hope to improve access to education and employment for young people to help them realise their aspirations. What else should we be looking at?

The trust offers training to mothers to help them gain childcare qualifications, while also having qualified staff on hand to look after their children while they are in their classes. Annie says: "Everyone needs to be able to access good quality childcare, training opportunities and the chance to get a good job and further themselves. Everyone is entitled to this. We are trying to give some parents this opportunity and the support that they need, and we know that we can help parents to get through the hard times with this help."

A GREAT OPPORTUNITY

Amelia Steele and Sue O'Leary are two parents that are now studying for their level 2 qualification. "This has been a great experience," said Amelia. "I already work in a nursery but this has given me a great chance to improve on my skills." Sue agrees: "This is a great opportunity for all of us – we couldn't afford to do training like this otherwise so we're really lucky. This has given me options that I never had before and that's brilliant."



Ssang Yee and Ghislane in class while their children are looked after in the crèche

“ We have to think about the wider community and what can be done to help them ”

Islington – Looking forward

Tell us what you think for your chance to win £100

5. Do you have any other comments?

1. Which of our priorities do you think is the most important? Tick one option.

- Reducing poverty
- Improving access to services and opportunities
- Realising everyone's aspirations

2. Which TWO of the following do you think are a priority for improvement in Islington? Tick two options.

- Improving our environment
- Improving education and learning
- Improving housing stock
- Reducing overcrowding in council homes
- Improving health and wellbeing, including mental health
- Improving opportunities for employment and skills
- Improving safety/reducing crime
- Improving relationships between people from different communities
- Other

3. What TWO areas do you think we should target first to bring about improvements to the borough? Tick two options.

- Housing estates
- Schools
- Parks and green spaces
- Pedestrian/ shopping areas
- Residential areas
- Other

4. Which groups of people do you think should benefit most from tackling the three objectives of reducing poverty/improving access/realising potential? Please select up to THREE groups

- Children and families
- Young people
- Older people
- People who have recently moved to Islington from overseas
- People with mental health issues
- Physically disabled people
- People who are out of work
- Lesbian, gay, bisexual and transgender people
- Any other groups

ABOUT YOU

What is your gender?

- Male
- Female

How old are you?

- Under 25
- 25- 44
- 45-65
- Over 65

Which of the following best describes your ethnicity?

- White (British or Irish)
- Asian British
- White (other)
- Asian (other)
- Black British
- Chinese
- Black Caribbean
- Mixed Heritage
- Black African
- Other ethnic group
- Black (other)
- (please state which)

Do you consider yourself to have a disability?

- Yes
- No

Thank you for taking the time to complete this questionnaire. Please post it back to us as soon as possible, but no later than 23 June 2007. We will publish information on the outcomes of the consultation in a future issue of IslingtonNow magazine... or keep an eye on our website.

Please send the completed questionnaire to Islington – Looking Forward consultation, Room G06, Town Hall, Upper Street, FREEPOST 18606, London N1 2BR. You do not need a stamp. Or you can visit our website and complete it online at www.islington.gov.uk/islingtonstrategicpartnership

If you would like to be in with a chance of winning £100, please write your name and address and contact phone number below.

Our youth strut their stuff

The achievements of some of the borough's most talented and dedicated young people were celebrated in the first ever Islington Young Achievers Awards.

Organised by Listen Up – the council's project for young people in the borough – and young people from City University, the awards set out to recognise and commend the hard work and achievements of Islington's youth. Categories included young entrepreneur, young role model and young volunteer.

Lots of hard work went into the event at the Rocket on Holloway Road, and many young acts performed. The event was hosted by Radio 1Xtra DJ Mike Anthony and MTV's Kat B, and there were even appearances from some X-Factor stars.

Mike Anthony said this was a great event for young people in Islington. "This was a fantastic event that was organised by young people in the borough. They worked so hard for it to all come together and the fact



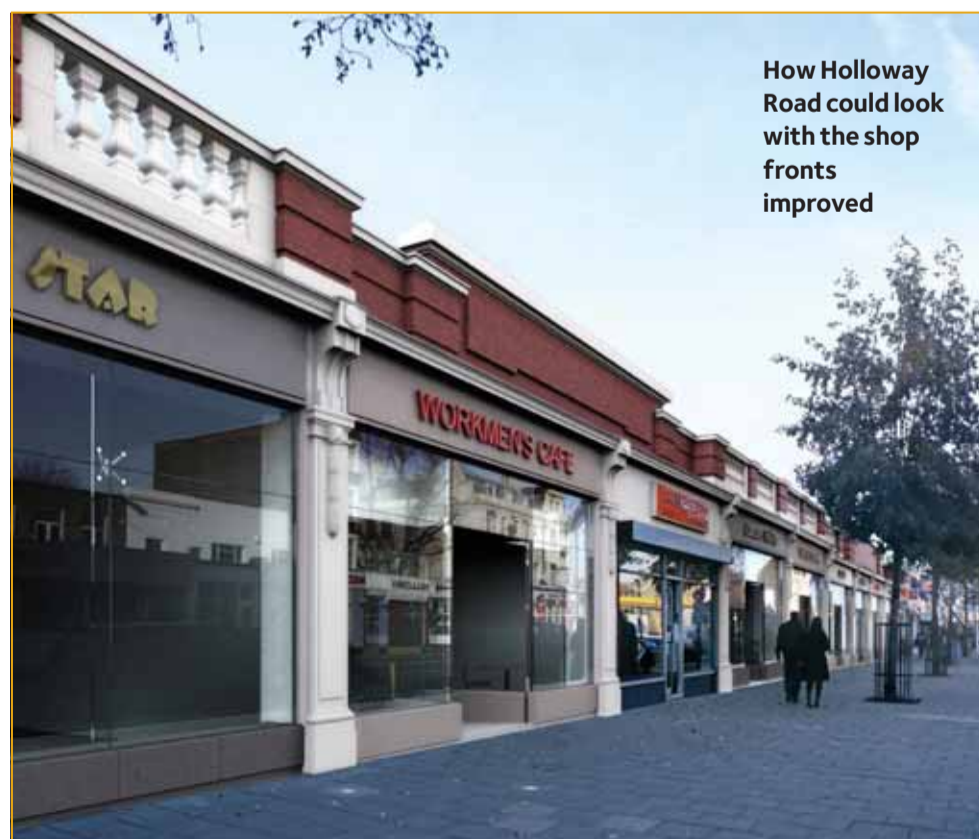
Host Mike Anthony with Jane Gregory, winner of Most Influential Adult, and nominees from Freightliners Farm

"I think the young people of Islington have a really bright future"

that it was such a great success and ran so smoothly is a real testament to their hard work. I'm delighted that this is now going to be an annual event because these young people deserve this kind of recognition.

"Young people get such a lot of bad press, but these awards prove that there are loads of kids out there

who want to work really hard and achieve something for themselves. There was so much talent on display tonight and I think the young people of Islington have a really bright future ahead of them. This shows that if you put your trust and a little bit of time and effort into young kids they will perform."



How Holloway Road could look with the shop fronts improved

Sprucing up Holloway Road

Maybe you've noticed scaffolding along Holloway Road from 171 to 181? For the past month work has been taking place to improve this stretch of shops. Graffiti is being removed, along with clutter such as advert boards, and new shop lighting and signs are being installed. We're also putting up new open security shutters and modern glass to protect the shops and we're scrubbing up the old balustrades above the shops.

The winners were:

- Alex Bissell – Young Volunteer
- Vanessa Martin – Young Mentor
- Mardoche Kiadi-Yembi – Young Role Model
- Stephen Ali – Gifted and Talented
- Reece Caudette – Young Entrepreneur
- Jane Gregory – Most Influential Adult

LIFESTYLE

1903 the year of the first Tour de France

11


Festival fun!



The My Generation Festival is a week of activity aimed especially at the 50 plus amongst us.

Whether you're 50, over 50 or approaching 50 this festival is for you. From 16-23 June there will be activities ranging from dancing in Highbury Fields to flower arranging and alternative therapy. So come along and join in the fun!

There will also be a chance to help us update Islington's vision for people aged 50 years and over, Live Long and Prosper. More on this can be found on p7.

 To find out more about the My Generation festival and to get a copy of the event guide, call 020 7527 3504, email andrew.younger@islington.gov.uk or log onto www.islington.gov.uk/mygeneration

FOOD FOR THOUGHT

Eat less salt

Try to eat less salt, as this helps you to have a healthy blood pressure. Many ready meals are high in salt, so aim to prepare your own food try using herbs and spices to add flavour.

GET YOUR FIVE A DAY!
Baked beans count as one of your five-a-day – but choose low salt options!



Cycle fun at the Emirates!

If you fancy a day of two-wheeled fun, head over to the podium outside Arsenal's Emirates Stadium on 23 June and get in the mood for the Tour de France, which takes place in London next month.

Tour d'Arsenal is a fun free festival that will feature BMX stunt riders, a French market and the chance to try out different bikes for yourself. There will be loads of cool prizes to win, and you can pick up a copy of Islington Council's cycle guide which is packed with advice on cycling around the borough.

The event takes place as part of Bike Week, so be sure to visit www.islington.gov.uk/cycling to find out what other cycling events are planned.

 For more information on Tour d'Arsenal please phone Kathryn King on 020 7527 2062 or email kathryn.king@islington.gov.uk

Win cinema tickets!

England is stubbing out the cigarettes next month, and it's time to test your knowledge on smoking – there are four free cinema tickets up for grabs!

What date will Islington be Smokefree?

1st June 2007

1st July 2007

1st August 2007

If you want help to stop smoking what Islington number should you ring?
 0800 093 9030
 0800 028 4428
 020 7527 2000

Circle your answers and send this slip with your name, address and contact phone number by 28 June to Islington Stop Smoking Service, Islington Primary Care Trust, 338-346 Goswell Road, EC1V 7LQ or by email to smokefree@islingtonpct.nhs.uk

 For more information and help on giving up smoking and going smokefree, please visit www.smokefreeislington.nhs.uk or call 0800 093 9030

www.islington.gov.uk/cycling ISLINGTON

Tour d'Arsenal

A free bike festival for all ages to celebrate the Tour de France coming to London outside the Arsenal Emirates Stadium

Saturday 23rd June
11am - 4pm


BMX Stunts
 Dr Bike
 Giveaways
 French Market
 Crazy Bike Try-out

NO STADIUM ACCESS



Swinging into summer

To celebrate the start of Wimbledon, the Islington Tennis Centre is starting tennis coaching courses for adults. The six-week courses begin on 26 June at the Tennis Centre, Market Road N7. There are classes for beginners, improvers and more advanced players, and you will be taught everything from tactics to matchplay.

 For more information, please contact Islington Tennis Centre on 020 7700 1370 or visit www.aquaterra.org

Spending time in the office may be ordinary for many of us, but for young people thinking about their future, spending the day at work can be a fantastic experience.

A learning experience

Working at a funky, cutting-edge design agency is a dream for a young person interested in graphics art. And this is exactly the opportunity that Sebaya Iyayi from Central Foundation School for Boys was given thanks to the council's work experience project.

Sebaya's enthusiasm for design reached new levels when he went to work at Steve Edge Design near Old Street, and being his first time in a design agency he found the whole experience enjoyable and helpful. He said: "I had started a school assignment before I went there so it was great to have feedback on my work. Steve called a team meeting where the whole team looked at what I was doing and made suggestions on how I could make it better. My original drawing was too cramped and Steve suggested I give it more space. I also got the chance to use a Mac and get experience using it over the two weeks I was there.

"Working there was much better than I expected. The people were very friendly and they said I could go back at any time if I got stuck on my graphics assignments."

Offering placements to the borough's youngsters is great for the companies involved too. "Sebaya was a charming chap and a credit to that school," said Steve Edge, director of the company. "He did his project very well and was one of the most focused work placements we've had.

"For us it's about the future of the industry and showing young people that there is an opportunity out there for people who do art

Sebaya found his placement to be fun and helpful



at school. And it's always great for us to have young people in the office so we can tap into their knowledge about the latest music and fashions. Everyone brings something to the party."



If you think you could offer a work experience placement to young people in Islington, or would just like to find out more about the project, please contact Marian Davis on 020 7527 5521/5644 or email marian.davis@islington.gov.uk

“Working there was much better than I expected. The people were very friendly and they said I could go back at any time



90% the quantity of fresh ingredients that will now be used in school meals

16 children's centres that will be up and running in Islington next year

13

Make a noise about junk!

The borough's schools have been using their household junk to create a musical jam!

After learning about the importance of the three R's - Reduce, Reuse, Recycle - each class went on to learn about creating sound and rhythm, before a final performance by four of the schools.

Yaneneh Ceesay was one of the performers. He said: "I think this is a good way for us to learn about recycling and how to use junk in another way." Teacher Julia agreed. "It's been great for them to have the opportunity to have fun with music and take part in learning about recycling together."



Hamza Khalif, Yaneneh Ceesay, Selin Sanik, Stevie Moto Baluti and Lamaar Marshall make a noise with their household junk!



ScotAlive is a new five-week programme for 13 to 16 year olds to teach them about scooter safety and stop them from taking part in scooter-related anti-social behaviour. At the end of the programme the group was rewarded with a day of scrambling, where they could put their safety knowledge into practice.



If you would like more information, please contact Jason Newton, Road Safety and Special Projects Officer on 020 7527 2319 or email jason.newton@islington.gov.uk

IN BRIEF

The Dame Alice Owen Foundation is continuing to support young people in Islington by giving over £320,000 to various projects. This includes donations to Upward Bound, which encourages people to go into higher education and summer university.

did you know?

The Three Corners Adventure Playground at Spa Fields that was destroyed by fire last year has a new indoor space for five to 15 year olds to play. And an even better building is planned for 2009.

A fresher future for school meals

School meals will have a new look – and taste – next term now that schools in the borough have a new caterer on board.

Parents worked alongside the council to get new caterers Cater Link in place. Parent and member of the board, Zozi Goodman, said this was great news for kids. "It is so important that children get a good, healthy meal when they are in school, and I am very excited about the change in contract. Cater Link already provides school meals in Camden and we hear good things about them. They are very committed to training and they say they will use 90 per cent fresh ingredients in school meals. They are a very forward thinking company and I am very positive about the impact this will have on school meals."



Cricket champs!

Canonbury Primary School beat schools from all round the borough to be crowned the champs at the Capital Kids cricket tournament.



smokefree restaurants



smokefree clubs



smokefree cafes



smokefree socialising



Islington will be smokefree from 1st July 2007
0800 093 90 30 - www.smokefreeislington.nhs.uk

CONTACT ISLINGTON

Contact Islington is the council's telephone and customer service centre based on the ground floor of **222 Upper Street, N1**. Contact Islington can help you with a range of services including housing advice and environmental queries.

The service centre is open from **8am to 6pm Monday to Friday** (8.30am to 6pm on Wednesday only) for your face-to-face service needs. It also opens **every fourth Saturday of the month, from 9am to 1pm** (third Saturday if coinciding with Bank Holiday weekends). **Phonelines are open from 8am to 8pm Monday to Friday, and 9am to 6pm every Saturday.**

Phone: **020 7527 2000**
 Email: contact@islington.gov.uk
 Minicom: **020 7527 1900**
 Fax: **020 7527 5001**

Other useful contact numbers

CEA@Islington
 020 7527 5800
www.islingtonschoools.net
HFI Direct (repairs)
 0800 694 3344
 (minicom 0800 073 0536)
repairs@homesforislington.org.uk
Islington Police
 020 7704 1212
 Report non-emergencies at
www.online.police.uk
NHSDirect
 0845 46 47
www.nhsdirect.nhs.uk

Local leisure centres

Archway Leisure Centre 020 7281 4105	Ironmonger Row Baths 020 7253 4011
Cally Pool 020 7278 1890	Islington Tennis Centre 020 7700 1370
Finsbury Leisure Centre 020 7253 2346	Sobell Leisure Centre 020 7609 2166
Highbury Pool 020 7704 2312	www.aquaterra.org

CONTACT YOUR LOCAL COUNCILLOR

Islington has 48 councillors. Councillors make decisions on council policy and spending. They are the people who know what's going on in your local area, and are there for you to talk to about any problems you may have with council services. They can take up your case themselves or point you in the right direction to get more advice.

You can meet any of your ward councillors in person at one of their regular surgeries, write to them at the Town Hall, email or telephone them.

For councillors' contact details and to find out when they hold surgeries, call **020 7527 2000** or go to www.islington.gov.uk/askislington and enter your property details for up-to-date information about your councillors.

COUNCIL MEETINGS

4 June
Regeneration Review Committee Meeting
4 June
Corporate Services Meeting
7 June
Sustainability Review Committee Meeting
7 June
Performance Review Committee Meeting

12 June
Overview Committee Meeting (Overview Meeting)
19 June 7pm
Standards Committee Meeting
28 June
Regeneration Review Committee Meeting
28 June
Corporate Services Meeting



For more information and details of licensing and planning sub-committee meetings, call **Jakki Crowder** on **020 7527 3251**, email jakki.crowder@islington.gov.uk or see www.islington.gov.uk/democracy

All meetings take place at 7.30pm at Islington Town Hall, Upper Street N1 unless stated. All meetings are subject to change. Please check the website before attending.

Easier to join

It's now even easier to join your local library. Simply pop in and fill in a form - you don't need any proof of identity.

Once you've got your membership card you will be able to take out four books, two CDs and one DVD, and you're entitled to a free internet session. Once you've returned these items you get full membership. For those who want full membership straight away, you need to bring in two proofs of address.



Web watch

Find a job!

Islington Council is the borough's biggest employer, and you can search our current vacancies via the council website.

If you find a suitable job, you can apply for it online - or if it's not quite right for you, send it to a friend!



For further details go to www.islington.gov.uk/jobs

What do you think of IslingtonNow?

Could you spare a few minutes to tell us what you think of this magazine? Your views will help us to continue to develop the magazine in the future.

Fill out the survey at www.islington.gov.uk/islingtonnow or email us at islingtonnow@islington.gov.uk

It's your magazine, so tell us what you think!

Travel solutions for businesses

The council is offering free consultancy advice to local businesses to help save costs and reduce the environmental impact of travel.

The next meeting will be held at the Estorick Gallery in Canonbury Square on Tuesday 5 June from 5.30pm. Let us know if you wish to attend by emailing tpbusiness.travel@islington.gov.uk

Rattling around in a property that's too big?

Are you living on your own after many years?

If the answer is yes, then Islington Council can help you move to a property that better suits your needs.

Our under-occupiers' scheme offers a tailor-made package of information and advice to help you move to a smaller, more manageable home.

To find out more contact
 The Under-Occupation Officer on
020 7527 5174

OUT AND ABOUT

15

Summer events

BATS ALONG THE PARKLAND WALK

See bats as they are – beautiful little furry animals that fly, not scary bloodsuckers!

Parkland Walk, meet at Crouch Hill Bridge opposite Ella Road

Friday 1 June, 9.15pm–10.30pm

Booking is essential – please call 020 7354 5162.

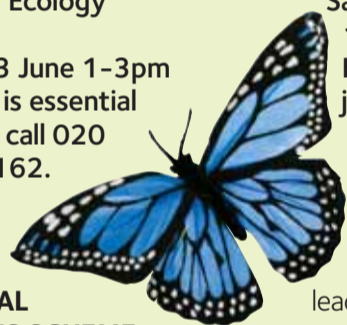
DRAGONFLIES AND BUTTERFLIES

The warm weather brings plenty of different dragonflies and butterflies. Join an event that will help you to identify them and sort your Darters from your Chasers.

Gillespie Park, meet at Islington Ecology Centre

Sunday 3 June 1–3pm

Booking is essential – please call 020 7354 5162.



NATIONAL GARDENS SCHEME OPEN AFTERNOON

Barnsbury Wood will be opening as part of the National Gardens Scheme Charity afternoon. A wide range of information and advice on wildlife gardening and sustainable planting is available as well as the chance to meet the Nature Conservation Ranger.

Barnsbury Wood

Sunday 3 June 2–6pm

£1.50, free for children. All proceeds go to charity. For more information call 07810 357498 or visit www.ngs.org.uk

OPEN GARDEN SQUARES 2007 – NEWINGTON GREEN

You can enjoy live music and guided tours in this historic and newly restored square.

Saturday 9 June 12noon–5pm

For more information call 020 7359 6027.

CULPEPER COMMUNITY GARDEN OPEN DAY

Come along for garden tours, plant sales, Reiki therapy taster sessions, kid's activities and refreshments.

Sunday 10 June 10am–4pm

Free – no need to book, just turn up on the day.

BIRD BOX MAKING

Children aged eight and over can come along with an adult to make homes for our feathered friends. Equipment will be provided, and you can take your box home or leave it for the rangers to put up in our parks.

Quaker Gardens – meet at the ranger's hut

Saturday 16 June 11am–1pm

Free – no need to book, just turn up on the day.

BIODIVERSITY BIKE RIDE

Islington Council's Nature Conservation Team will lead a gentle cycle around some of the borough's natural history highlights. Bring a bike and lots of refreshments. Suitable for adults and accompanied older children.

Gillespie Park, meet at Islington Ecology Centre

Saturday 16 June 2–5pm

Free – no need to book just turn up on the day.

LOVE YOUR PARKS DAY

There will be fun and games for all ages, including a tree walk and art in the park. Bring a picnic!

Highbury Fields

Thursday 21 June 3–7pm

Free – no need to book, just turn up on the day.

ELIZABETH GARRETT ANDERSON COMMUNITY OUTREACH EVENT

A showcase of young peoples' talent from Elizabeth Garrett Anderson school.

Edward Square

Saturday 23 June 12noon–6pm

Please call Lisa Pontecorvo on 020 7609 1687 for more information.

Free – no need to book, just turn up on the day.

BUNTING MAKING WORKSHOPS

Learn to make bunting at our free workshop!

Saturday 23rd June

Whittington Park Community Centre, Yerbury Road, N19

10.30am–12.30pm and 2.30–4.30pm

Get a ticket to reserve your place from Nash's

Newsagents, 678 Holloway Road or Whittington Park Community Association, Yerbury Road.

THE ANGEL BAND MIDSUMMER SHINDIG

Islington's famous Angel Band returns for a country dance spectacular! Bring a lunchtime picnic and something to sit on.

Barnsbury Wood

Sunday 24 June 1–3pm

Booking is essential. Entrance is by ticket only, which can be purchased by calling 020 7354 5162. £5 / Concession £2 (Children under 5 go free).

SUMMER SOLSTICE

Enjoy music from local artists and the smells from the barbeque as we relax into the summer mood. Bring a bottle and a bite to put on the BBQ. Salads will be provided along with fun and good humour.

Gillespie Park, meet at

Islington Ecology Centre

Saturday 30 June 6–10pm

For more information call 020 7354 5162.

Just turn up and pay on the day – £5 / concessions and children £2.50.

See www.islington.gov.uk/leisure for venue details

Adoption event

Last year Islington Council successfully arranged 33 adoptions, but there are still many children in need of a loving home. These children come from a variety of backgrounds and range from babies to school-age, with some needing to be placed with their brothers and sisters.

If you are interested in adoption, we are holding an informal event that is open to everyone, whether you are single or married or with or without your own children. We especially need families from African, Caribbean and dual heritage backgrounds.

The Elthorne Centre, 5 Elthorne Centre N19 Thursday 21 June from 6.30–8pm.

For more information on this event, or adoption in general, please call 0800 073 3344, email adoption@islington.gov.uk or go to

www.islington.gov.uk/adoption

Global grub

The Whitecross Street Food Festival runs from 10am–4pm on 1–3 June. With over 50 food stalls, you will be able to sample delicacies such as cheeses, sausages, pickles and juices. For more information visit www.whitecrossstreetmarket.co.uk

And don't miss your chance to sample delicious food from around the globe at the World Flavours' Market at the Holloway Road Nag's Head from 10am to 5pm on 29 and 30 June and 11am to 5pm on 1 July.

The organisers of events can change their arrangements at any time. Please check with the venue before you go out of your way.

My Generation

50Plus

festival

16–23 June 2007

Join our week of fun and exciting activities including:

16 June Let's Dance Festival
Highbury Fields 1pm–6pm
If you remember the jitterbug, 50's dance hall or the sounds of the 60's then this is for you.

23 June Islington Health and Sports Festival
Arsenal podium 10am–4pm
Take part in sports and other activities like wall climbing. Have a health check, a massage or get useful healthy living tips.

Full events list at www.islington.gov.uk/mygeneration or pick up the events calendar from public buildings.

Help us shape the future in Islington. Turn to page 7 to find out more.

My Generation festival is funded by The Islington Strategic Partnership




If you want to see your event listed here, email us at events@islington.gov.uk

We can't guarantee that all events will be published

HOW HEALTHY IS YOUR DIET?

How much fish should you eat?



Where is the hidden salt?



Why is it a bad idea to skip breakfast?



How much is one portion of fruit and veg?

How fatty is your fried chicken?



Why should you watch what you drink?



For more information please contact Paula Cooze 0207 527 1250, or email paula.cooze@islingtonpct.nhs.uk.

FREE INSIDE

**SMALL CHANGE
BIG DIFFERENCE**

Tips on healthy eating and getting active for a healthy life.



For further copies, please download: www.islingtonpct.nhs.uk/go/lifestyle

Islington **NHS**
Primary Care Trust

Now that summer's here, this handy guide gives you the basic information on how to eat healthier and get fit.

Road tested and perfected by Islington residents

If you would like to know more about foods, what's the latest advice, come along to the free

Supermarket Tour

**Waitrose, Barbican, EC1
Saturday 14th July &
Sunday, 15th July**

**Turn up between 12-2pm
for tours every half hour.**

**Waitrose Barbican
Cherry Tree Walk Centre
Whitecross Street
Barbican
London, EC1Y 8NX**

To download additional copies to give to your friends
www.islingtonpct.nhs.uk/go/lifestyle

Islington **NHS**
Primary Care Trust