



# ISLINGTON

[www.islington.gov.uk](http://www.islington.gov.uk)

Issue 41, December 2006

## A sparkling Christmas

**Camden Passage is glittering more than ever this Christmas with a wonderful display of festive lights.**

The passage is just one of many destinations around the borough that now has festive lights, which are a great way to cheer up streets on dark, chilly evenings. And to reduce the effect on the environment, all council displays have LED lights that use 80 per cent less power than conventional bulbs.

Annie Moss, pictured here with friend and composer James Harpham, has been running Annie's Vintage Costumes & Textiles for 26 years. She said: "Camden Passage is a really unique part of Islington, and it has a great community feel. And these beautiful lights make

the atmosphere even more special for Christmas."

And Camden Passage is the perfect destination for last minute Christmas shoppers. Rob Zdero runs vintage clothing shop Fat Faced Cat. "People should do their Christmas shopping here as they can pick up something unique for people of all ages," he said. "And of course it's great for vintage and retro items."

Karen Murdoch, director of Camden Passage Sites, the company that owns the market, said: "We have so many diverse, individual items that you can't get on the high street, and everything is so well made. And the Christmas lights are beautiful - it was so kind of the council to help us put them up."



## A cracker of a Christmas gift

**Christmas is a time for friends and families to get together and celebrate – not a time to worry about parking!**

So this festive season we're giving you four complimentary one-day parking vouchers. There is usually a charge for these vouchers but, with many people heading off on holiday at this time of year, there will be more parking spaces available for your visitors.

The colour-coded visitor vouchers can be pulled out of the middle of this magazine for use between 27 and 30 December 2006.

Your vouchers can be used in any on-street residents or residents' shared use parking bay (not pay and display), but make sure they are displayed correctly and in line with the conditions on the back.

We are continuing to improve our parking services to make sure we are meeting the needs of our residents, and you will see further changes in the New Year.

In the meantime, pull out those vouchers, use and enjoy!

**Keep an eye out for your new look magazine, *IslingtonNow*, coming your way in January!**

## Opening times

This issue is packed full of useful festive information, including opening and closing times.

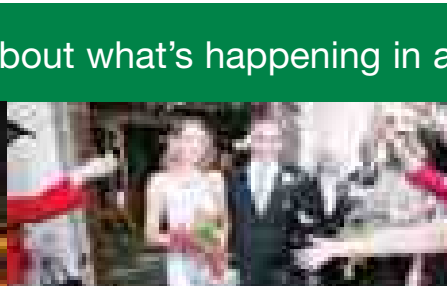
Look inside for more about what's happening in and around Islington...



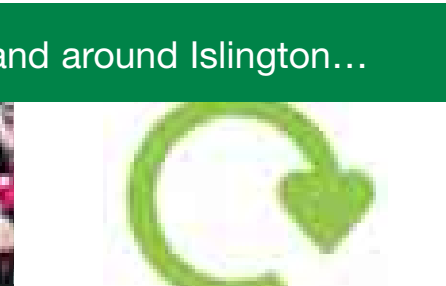
Pupil parliament



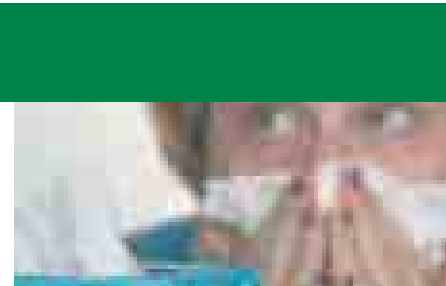
Photo winner



Get hitched



Recycle your tree



A healthy Christmas

# Welcome

## Welcome to Issue 41 of *Islington*

From Helen Bailey,  
Chief Executive



With the holiday season upon us, this edition is packed with information and advice. Opening hours for key services can be found on page 10, and don't forget you can also find this information on [www.islington.gov.uk](http://www.islington.gov.uk) or by calling Contact Islington on 020 7527 2000.

If you're stuck for ideas for last minute Christmas gifts, why not explore the local shops we all take for granted? The perfect gift may be waiting for you just around the corner! This month, our regular Shop Local feature focuses on Newington Green.

This issue also describes the "Choose life, not a knife" campaign. We are fortunate that, in Islington, knife crime is not a major cause for concern, and we are trying to ensure it doesn't become so. It's important that everyone feels safe on our streets and that no-one can use fear as an excuse to carry a weapon. Please read our article on page four and send us your pledge card.

The New Year will bring a new look for this magazine. We hope it will continue to catch your attention and that the changes will reflect the comments you made in our September survey.

Best wishes for a safe, happy and festive Christmas season and a successful New Year.

*Helen Bailey*

# Your Shout

Below are some of your letters, emails and phone calls we received in response to the last issue.

## Tree trauma

I am a resident of Prospero Road N19, and I am very sad to see that two trees in the road have been marked for removal. I hope there is a very good reason for taking this action, and it's not just to satisfy the lorries that drive through here.

**We regularly survey all our street trees to make sure they are healthy and safe. We would never remove trees to satisfy the needs of lorries. However you are right, we do need to remove two trees on Prospero Road.**

**Unfortunately when we surveyed the trees on Prospero Road, we found one with serious decay and the other had significant bark wounding, making them both a safety concern.**

**While we love trees we need residents to be safe. The trees will be replanted in the future.**

## French foodie fun

Some time back there were some French stalls on the pavement by the Nag's Head. Do you know when or if they will be back again? I bought some very nice food and would love to buy some more.

**The French market that visited Holloway Road at the end of July was such a success that we invited them back to the town centre and they were in Holloway on 17-19 November. The Nag's Head Town Centre Management team is producing a range of annual events for**

the area that they think people will like. In a recent survey carried out in the area, virtually everyone said they would like to see more events including a French market, farmers market, festival, and an arts and craft fair.

**The French market will be back next year, but watch out for other events also coming to the area.**

## Mobile menace

What is being done about the scores of men who line the pavements at the top end of Blackstock Road blatantly selling each other mobile phone handsets?

**We are aware there is a problem in this area, and we are working closely with the Safer Neighbourhood police team in the area. There have been public meetings to address residents' concerns about Blackstock Road and there are regular meetings with traders in the area.**

**The police are aware of people illegally selling mobile phone handsets and there is currently a police operation targeting these issues. High visibility police patrols are covering the area and, where there are grounds, suspects will be questioned or searched and arrested.**

**Your local Safer Neighbourhood Team is always available to talk to you about any concerns you have. You can find contact details for your local team by going to [www.met.police.uk/saferneighbourhoods/boroughs/islington/saferneighbourhoods](http://www.met.police.uk/saferneighbourhoods/boroughs/islington/saferneighbourhoods).**

## Your Views...



**Do you think we are doing the right things?**

**Is there anything you think we have done well?**

**How can we improve our service to you?**

**What do you want to see in this newsletter?**

We want to hear what you have to say. So, if you want to make a comment about any aspect of the services we provide, please

contact us using the information below:

**Phone:** 020 7527 3416

**Email:** [residents.news@islington.gov.uk](mailto:residents.news@islington.gov.uk)

**Write to:** Helen Bailey, Chief Executive  
Islington Council, Town Hall,  
Upper Street, N1 2UD

Tell us what you think. After all, if you don't tell us something is wrong we can't do anything about it...

**We look forward to your feedback.**

**We reserve the right to shorten or amend at our discretion.**

# Winds of change



*Pupils from Ambler Primary School got behind the council's wind turbine proposal by making their own solar powered wind turbines!*

This will be followed by planning applications for turbines on other council land, including the Municipal Offices in Upper Street, where the energy will be used to power the council's fleet of electric vehicles.

Wind turbines convert wind energy into electrical energy, reducing carbon emissions and offering a renewable source of energy. The council is also launching a Climate Change Partnership in February which will see many local organisations working to cut carbon dioxide emissions across the borough.

**Wind turbines could become an Islington landmark if the council's bid to install turbines on council land is a success.**

The first turbine could be installed at the council's Ecology Centre, Drayton Park, N7. The Ecology Centre is already a low energy building fitted with sun pipes, a windcatcher, and solar hot water panels. The wind turbine will supply all of the building's electricity.



For more information on the partnership, please contact Laura Hales on **020 7527 2347** or email [laura.hales@islington.gov.uk](mailto:laura.hales@islington.gov.uk)

# Who's your unsung hero?

**Do you know an individual or group who has made a major contribution to life in Islington and deserves recognition? If so, why not nominate them for the Mayor's Civic Award scheme? The closing date for all nominations is Friday 19 January 2007.**

Those honoured will be celebrated at an awards ceremony at the Town Hall in March.



You can get a nomination form by calling **020 7527 3113**, emailing [the.mayor@islington.gov.uk](mailto:the.mayor@islington.gov.uk) or online at [www.islington.gov.uk/civicawards](http://www.islington.gov.uk/civicawards)

# Music for free at your local library

**Get down to one of Islington's 13 libraries for free hire of music CDs throughout December. You'll be surprised at the wide range on offer.**



For more information on your local library, go to [www.islington.gov.uk/libraries](http://www.islington.gov.uk/libraries) or call **020 7527 6900**



**Upper Street resident Cesar Soriano's photograph, The Number 38 Bus in Angel, was chosen by the public as the winner of the council's recent public transport photography competition.**

His photograph wins him a Canon camera worth £1,000. The competition was run as part of Sustainable Transport Week.



# Wipe out bullying

**The borough's pupils are being invited to take part in an anonymous online survey to help Islington become a bully free zone.**

Headteachers will be able to view their school's results, but will not know how individual pupils have voted. They can then use the information to identify bullying 'hotspots' or to find out whether pupils are familiar with their school's anti-bullying policy. The results will also enable the council to develop a boroughwide anti-bullying policy.



The survey can be found at [www.nobullykids.com](http://www.nobullykids.com)

# A helping hand

**The council has launched a new online directory for residents which gives details of housing support services. Supporting People is a council service aiming to help elderly, sick and vulnerable people to live at home for as long as they wish or are able to do so.**

The new directory, which can be accessed at [www.islington.gov.uk/supportingpeople](http://www.islington.gov.uk/supportingpeople), has been produced to help people gain access to

support services. Practical support is offered in areas such as healthcare, education, training, employment and applying for benefits.



For more information call **020 7527 4656/4369**, email [supportingpeople@islington.gov.uk](mailto:supportingpeople@islington.gov.uk) or log on to [www.islington.gov.uk/supportingpeople](http://www.islington.gov.uk/supportingpeople)

# Choose life – not a knife

**Few crimes in Islington involve knives, but on the 6th anniversary of Damilola Taylor's senseless death the council, together with the police, is getting behind the Damilola Taylor Trust's campaign "Respect Life – Not a knife", and is asking all Islington residents to pledge their support to reducing knife crime.**

## Tackling knife crime

**The council and the police are lead partners in the Safer Islington Partnership; together they have worked on a number of initiatives to reduce knife crime in the borough this year.**

"We're lucky," says Superintendent Alan Baldwin, "Islington doesn't experience a lot of knife crime. In fact, it's actually been declining over the past five years. However there isn't any room for complacency - one instance of knife crime is one too many in my book."

## Education is key

**The best way to reduce knife crime is to educate people about the dangers of carrying a knife.**

"The fact is that most kids don't carry knives, but they run a higher risk of becoming a victim, which is why the police and the council run extensive education programmes in schools," says Superintendent Baldwin.

"There is a misconception out there, especially amongst some young people, that carrying a knife is a way to protect themselves. The truth actually is that if you carry a knife you risk having it turned upon yourself."

Paul Curran, Islington Council's Director of Children's Services, believes that the partnership approach to education is showing results. "Our schools and youth clubs are talking to young people about the dangers of knives so they are confident about their personal safety. We show young people how to avoid unsafe situations and that it's okay to turn to a parent, teacher or other adult if they feel as though there is a situation they can't handle themselves. Working with our partners, the police and CEA@Islington, we are able to provide advice and support both through the curriculum and safer schools officers to make Islington safer for everyone."

The Safer Schools education programme, which will continue in 2007, makes use of a theatre group to challenge perceptions that carrying a knife is a form of protection, explains the legal aspects of carrying a knife and shows the bloody results of becoming a victim. Parents also can play a role by being vigilant about the whereabouts of household knives and not be afraid of asking questions if one goes missing.

## Using policing as a deterrent

**Hotspot areas such as Finsbury Park, Angel and the Nag's Head will be the focus of increased police stop and search activities in the lead up to Christmas.**

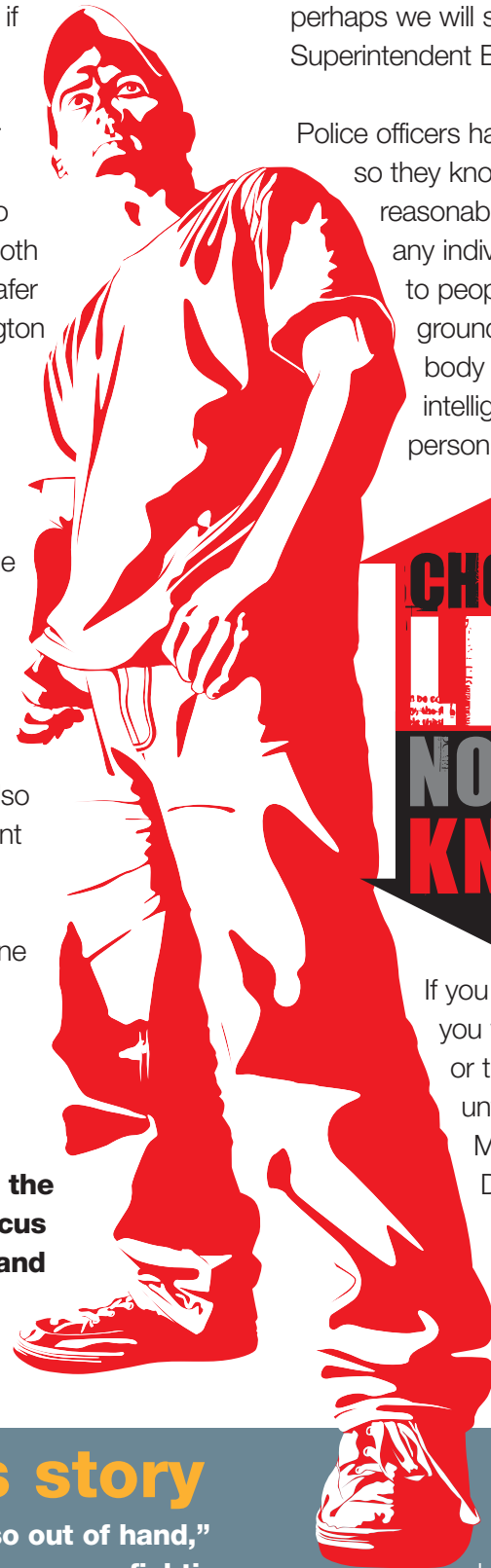
**The Safer Islington Partnership supports this initiative as a necessary deterrent to people carrying knives.**

"We know stop and search can be controversial, but carrying a knife without good reason is both an offence and dangerous. If by doing it we deter people from carrying knives, perhaps we will save a life," says Superintendent Baldwin.

Police officers have undergone special training, so they know inside out what constitutes reasonable grounds to stop and search any individual. This includes how to talk to people whilst ascertaining whether grounds to search exist, reading body language and understanding intelligence that profiles what type of person is most likely to carry a weapon.

The police have the power to stop and search any individual but they must tell you why and give you a written form that says why, when and where you were stopped.

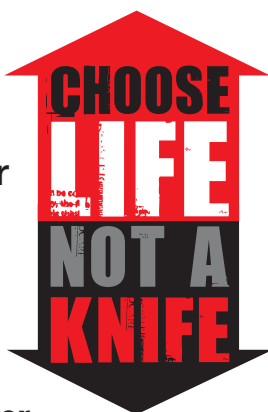
If you have any questions about why you were stopped and searched, or think you have been treated unfairly, please call the Metropolitan Police Service Directorate of Professional Standards on 020 8785 8666, or the Independent Police Complaints Commission on 08453 002 002.



## Choose life – not a knife

Show us you support knife crime reduction and pledge your support to our CHOOSE LIFE Campaign.

Cut out this and send it to The Editor, Islington Magazine, Town Hall, Upper Street, N1 2UD



## One boy's story

**"It shouldn't have got so out of hand," says Adam\* 17. "Yeah, we were fighting, but no one ever expects to get stabbed."**

Last year Adam was walking home from school when confronted by several other boys. The scuffle turned serious when Adam was stabbed in the heart. Now, six months later, his body is on the mend but he still bears the scars.

"I died three times and although I'm better now, this will stay with me for the rest of my life. I don't want anyone else to go through what I went through and I want other people my age to know that knives are really dangerous. They

didn't expect to hurt me so badly but it happened and now they're in jail – their life is stuffed as well.

"I want people to stop carrying knives - they are just too violent. You could get hurt and even if you don't, if you get caught you'll get in trouble. I think the police are doing the right thing stopping and searching people – it might stop someone else from getting hurt like me."

Adam is waiting to go to college next year and will be studying sport.

\*The victim's name has been changed to protect his identity.



Sherin Kangen and Wisnu Sugiarto from St Thomas 1 High School, Indonesia, with Hassan Basheer and Mancif Afif from Highbury Grove

# The global classroom

An Islington school has gone global by inviting Indonesian students to join them in class

**Highbury Grove School is leading the way in international relations after welcoming two students from Indonesia into their media class. The initiative was arranged through the British Council and is aimed at promoting global citizenship and awareness for the environment.**

Sherin and Wisnu, from St Thomas 1 High School, Indonesia, presented a film they had made about their school in Sumatra to Highbury Grove's year 10 media studies class. They also joined in a drama workshop.

The students engaged in a lively debate comparing their two schools, including much detail about uniform rules and how each school administered punishments for misdemeanors!

Using the internet to link up with schools in the tsunami-hit Banda Aceh area of Indonesia, Highbury Grove is providing support and advice on school leadership. "Forging closer links with schools in Indonesia provides a great opportunity for students to appreciate the challenges faced by young people of their own age in other countries," explained Highbury Grove teacher Paul Gilbert.

## Islington Green consultation

**Time is running out to submit your views on the proposed closure of Islington Green School, which may close in September 2008 and reopen as the City of London Academy. You have until 21 December to air your views.**



More on the proposal can be found at [www.islington.gov.uk/education](http://www.islington.gov.uk/education)

## Pupil parliament

**School students took over the council chamber for a special session of pupil parliament during Local Democracy Week.**

After quizzing local MPs, children were presented with seven Good Citizen awards, which recognise and celebrate the achievements of young people who have made a valuable contribution to their school community. The

youngest recipient was 10-year-old Emily Quinn who was nominated by her school for her work on the school council and for her welcoming attitude and kindness towards new pupils.

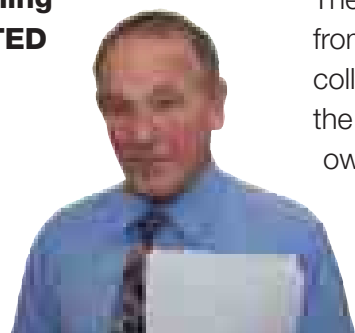
**Emily Quinn with her Good Citizen award**



## Praise for St Aloysius

**St Aloysius' RC College for boys has received praise for its staff and high standards of teaching following a recent OfSTED inspection.**

Headteacher Tom Mannion has helped to encourage



students by raising expectations as to what they might achieve. This has given staff a morale boost, and there is now a common sense of purpose and determination to do the very best for the boys at St Aloysius.

The report said: "St Aloysius has emerged from a turbulent period and is now a good college. Standards are now rising faster than the national trend. The successful transition owes much to a dedicated core of teachers who are passionate about the college."

## Education resolution

**Ever thought about working with children, but not known how to get started? Or maybe you want to progress your career in childcare? Now's the time to resolve to do something about it!**



For information about childcare qualifications, contact CIS on **020 7527 5959**, drop into your local Children's Centre, email [cis@islington.gov.uk](mailto:cis@islington.gov.uk) or go to [www.islington.gov.uk/cis](http://www.islington.gov.uk/cis)



# New scene at Newington Green



**With a fresh new look and a good range of shops and cafes, Newington Green is a great place to visit**

**A programme of regeneration has helped transform Islington Green into a safer, greener place for local residents, workers and children. They come here to buy groceries, eat lunch and dinner, get their hair done and take their children to the new playground.**

Thanks to the regeneration project, the Green now boasts 75 per cent more grassed area, new timber seating and meeting areas, new bins, five new silver birches and 3,900 new plants.

With bakeries, a post office, pubs and restaurants, Newington Green is a lively place to visit at any time of day!

## How to get there

Newington Green is between Canonbury and Dalston Kingsland overland train stations. Many buses also go to the area, including the 73, 341 and 476.

## Minding your business



Mary Chimba runs Pilgrims Natural Foods. She says: "I've traded in the area for over a year and half. The area's good with friendly shoppers and a very strong community."

**There's a great range of shops on offer here, and they help to create the strong community feel.**

Claire Hearn, owner of Angel Chiropody, has been trading in the area for even longer. "I've been in the area nearly six years. There are good transport links and it's a friendly area with a diverse range of shops. There's also a nice green space."



## Community feel

**The area is a real favourite with local residents and workers, who find the area caters for all their shopping needs.**

Alison Phillips, pictured here with son Thomas, lives locally and walks here to buy all her essentials. "We live in the area and use it for everyday shopping needs. It's convenient



and feels like home. It's got the basics and a good coffee shop and friendly shopkeepers. We walk here because it's so convenient."

Marguerite Ngassa visits Newington Green daily. "I work in the area and shop here every day. There's lots of variety amongst the shops and products. The fish and chip shop is the best! I also bring my child to the playground in the park, and we get the bus as it's convenient."



# Getting hitched

Islington's Town Hall is a popular choice for couples sealing their commitment and this year the front steps have been awash with confetti with over 900 couples saying 'I do'.



## Swept away

Paul Lanham and Luan Bagnall got married in the council chamber earlier this year – complete with a chimney sweep! “We were initially interested in the Town Hall because of its size,” says Luan. “But as soon as we saw the room and the Town Hall itself we knew that it was the perfect setting for our wedding.”

But why the chimney sweep? Luan explains: “Apparently a chimney sweep is meant to bring good luck to a bride and groom on their wedding day. It was booked for us as a surprise by my parents and even though I was initially very shocked to see him, looking back it was hilarious!”

And the venue also received the thumbs up. “What was particularly touching were the comments from our guests on how much they loved the Town Hall, with many saying that it was the nicest venue they had ever been to. We thought it was perfect and all the planning was made simple by the staff beforehand and the registrars on the day.”

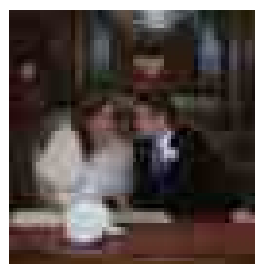
**“As soon as we saw the room and the Town Hall itself we knew that it was the perfect setting for our wedding”**



**December marks the first anniversary of the Civil Partnership Act. Over 330 same-sex couples got hitched at Islington Town Hall this year.**

## Global audience

**Dan Wright and Mona Jain got married in the council chamber the following week and had a global audience, thanks to the council's webcam facility. Islington is the first local authority in the country to offer the webcam service, which provides live streaming of ceremonies to friends and relatives around the world.**

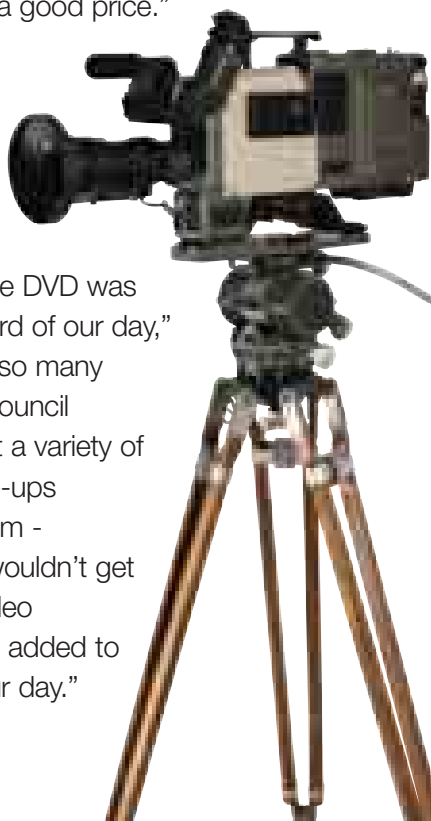


“The webcam option provided by Islington was a fantastic and unique opportunity to allow many more people to see the ceremony,” said Dan. “Many of our friends and family are overseas, and couldn't afford to make the journey to London. So they logged on to watch the proceedings. We had viewers from India, the US and Europe.”

And again the venue was a hit. “The Town Hall was the perfect venue for us, both in terms of size and beauty – it has the trappings of grandeur without being overly pretentious. It also represented excellent value for money. You wouldn't be able to get such a beautiful, large venue anywhere else, close to the centre of the capital, for such a good price.”

### The big screen

Dan and Mona also opted to get a DVD of their big day. “The DVD was a wonderful record of our day,” says Dan. “With so many cameras in the council chamber you get a variety of angles and close-ups throughout the film - something you wouldn't get with a normal video camera. It all just added to the 'magic' of our day.”



## Rooms to suit

With three very different rooms available, the Town Hall has a space to suit any ceremony.

The council chamber has a domed ceiling and stained glass windows, and seating for up to 100 people with a public gallery hosting a further 60 guests.

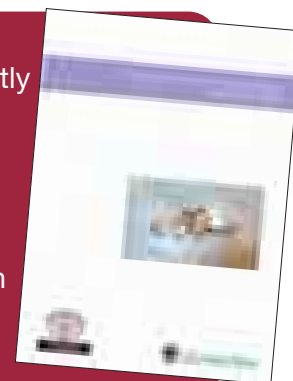
The Marriage Room is elegant and newly refurbished, and is a relaxed and welcoming venue for the special day.

Finally, the Mayor's Parlour offers a unique setting for those who are looking for something a little different.

*Bird's eye view of the council chamber*



A new wedding guide has recently been published and can be obtained by emailing **registrars@islington.gov.uk**. You can also find out all you need to know about arranging your wedding or civil partnership in Islington by visiting **www.islington.gov.uk/ceremonies**



# Wishing you a greener, s

Here is a selection of top tips, useful hints and handy information for you this Christmas.

## 25 December

**On the first day of Christmas, my true love gave to me... a turkey!**

If you're cooking a turkey from frozen this Christmas, you must make sure it's completely defrosted, right through to the middle. If it's not, it won't cook properly.



It's very important to keep cooked meat and poultry in the fridge. If it's left out at room temperature, food poisoning bacteria can grow and multiply.

And don't be tempted to store leftover turkey in the fridge until New Year - try to use leftovers within 48 hours.



For more safe cooking tips, visit [www.eatwell.gov.uk](http://www.eatwell.gov.uk)

## 26 December

**On the second day of Christmas, my true love gave to me... a horrible pair of socks!**

Use the SwapXchange website to swap unwanted presents. Simply place an ad on the site specifying which goods you no longer need and what you would like in exchange.



Visit [www.islington.gov.uk/SwapXchange](http://www.islington.gov.uk/SwapXchange)

## 27 December

**On the third day of Christmas, my true love gave to me... a non-alcoholic cocktail!**

If you're going out drinking over the festive season, remember to leave your car at home. Use public transport, take a licensed cab or designate a driver who sticks to soft drinks.

And if you are driving, the safest option is to not drink at all. You can't calculate your alcohol limit, so don't try.



For more information, visit [www.thinkroadsafety.gov.uk](http://www.thinkroadsafety.gov.uk)



## 28 December

**On the fourth day of Christmas, my true love gave to me... a light bulb!**

There's plenty of ways to save energy this winter. For example, you could try using energy saving light bulbs - they last over 10 years and will give you a saving of up to £10 a year. Turn your central heating thermostat down by 1°C to save up to 6 per cent of your annual heating bill. Avoid leaving appliances on standby - a TV left on standby is still using 80 per cent of its power.

And remember to turn your Christmas tree lights off at night.



For more information contact Islington Energy Centre free on **0800 953 1221** or go to [www.islington.gov.uk/388.asp](http://www.islington.gov.uk/388.asp)



## 29 December

**On the fifth day of Christmas, my true love gave to me... a French hen!**

The message is clear: don't give pets at Christmas unless you are sure they are wanted. Every year, councils and animal welfare charities have to find homes for tens of thousands of unwanted or abandoned animals. Also, Christmas is not a good time for a pet to settle into a new home.

And don't forget your pet's safety this Christmas. Threats to animals are all around, including decorations, ingestion of toxic items, excessive consumption of rich or harmful food, candle flames and many others.



For more information visit the Animal Welfare Service pages at [www.islington.gov.uk/environment/469.asp](http://www.islington.gov.uk/environment/469.asp)



## 30 December

**On the sixth day of Christmas, my true love gave to me... a very loud sound system!**

Please remember to be considerate if you're holding parties over the festive period. And don't forget that many other types of noise can bother people, from unattended burglar alarms to DIY.

If you're being disturbed by noise, the first thing to do is speak with whoever is causing it. They may not realise they are causing a problem and may be happy to stop.

But if noise has become a nuisance then you can find help by calling the council's noise patrol on 020 7527 3229.



For more information visit [www.islington.gov.uk/environment/noise](http://www.islington.gov.uk/environment/noise)

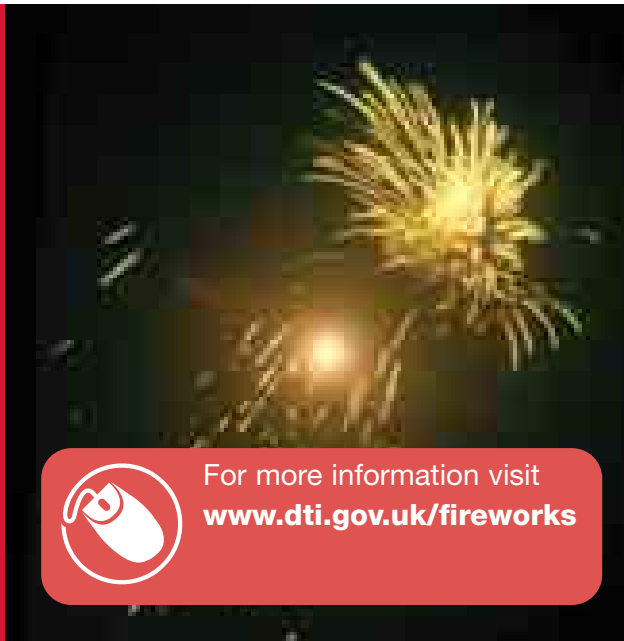


# safer, healthier Christmas

## 31 December

**On the seventh day of Christmas, my true love gave to me... a firework!**

It's not just on Bonfire Night that you need to remember the Fireworks Code. You should also remember that if you are letting off fireworks on New Year's Eve, you're only allowed to do so until 1am. It's also illegal for anyone under 18 to buy or possess fireworks.



For more information visit [www.dti.gov.uk/fireworks](http://www.dti.gov.uk/fireworks)

## 4 January

**On the eleventh day of Christmas, my true love gave to me... a hot water bottle!**

It's important to stay warm over the winter months. And the council is able to help by giving grants to residents who are eligible for our Safe and Warm scheme.

You will qualify for a grant if you are an owner-occupier or private tenant and you receive a qualifying benefit such as income support, housing benefit, council tax benefit, income-based job seeker's allowance or child tax credit (maximum rate only), or if you are over 60 years of age or have a disability.

There are also grants available to private landlords for energy efficiency and security measures. Email [grants.residential@islington.gov.uk](mailto:grants.residential@islington.gov.uk) or call 020 7527 3104. All grants are subject to availability.



For more information contact Islington Energy Centre free on **0800 953 1221** or go to [www.islington.gov.uk/388.asp](http://www.islington.gov.uk/388.asp)

## 1 January

**On the eighth day of Christmas, my true love gave to me... a new pair of trainers (and threw away my cigarettes)!**

If you're making New Year's resolutions and thinking about working off that extra slice of Christmas pudding, then the council's leisure facilities offer something for everyone. Visit [www.aquaterra.org](http://www.aquaterra.org) or call 020 7253 5365 to find your nearest fitness centre. Or why not visit one of the many greenspaces in Islington and enjoy a brisk walk or jog!



If you've made the positive decision to stop smoking this year, support is at hand from Smokefree Islington. This year will see smoking stopped within most workplaces throughout the borough, so you won't be alone in thinking now's a great time to stop.



For more help and advice about stopping smoking visit Smokefree Islington at [www.smokefreeislington.nhs.uk](http://www.smokefreeislington.nhs.uk)

## 5 January



**On the twelfth day of Christmas, my true love gave to me... a hint to take down the Christmas tree!**

Islington Council offers a free Christmas tree collection service. For street properties, simply leave your tree at the edge of your property along with your normal green waste. All decorations need to be removed and only real Christmas trees will be collected.

You can also take your tree to the Household Reuse and Recycling Centre in Hornsey Street. Opening hours are:

Mondays to Saturdays - 8am to 8pm

Sundays and Public Holidays - 8.30am to 8pm

Christmas Day and New Year's Day - Closed

As well as your tree, you can also take cardboard, furniture, garden waste, books, clothes, DVDs and car batteries.



For more information visit [www.islington.gov.uk/recycling](http://www.islington.gov.uk/recycling)

## 2 January

**On the ninth day of Christmas, my true love gave to me... a pair of binoculars!**

Help keep Islington clean, green and safe by becoming a member of Eyes for Islington. As an Eye you can help to identify and report any street management problems, such as damaged paving, graffiti and fly posting through to illegal trading and noise pollution.



For more information, call Contact Islington on **020 7527 2000**, email [eyes@islington.gov.uk](mailto:eyes@islington.gov.uk) or go to [www.islington.gov.uk/eyesforislington](http://www.islington.gov.uk/eyesforislington)

## 3 January

**On the tenth day of Christmas, my true love gave to me... a new recycling bag!**

The New Year is a great time to start recycling. By using your green box or recycling bag you can recycle all of your glass, paper, tins, cans, cardboard and plastic bottles.

And make sure you use the council's kitchen

waste collection service to ensure any scraps you throw away are composted.



For more information visit [www.islington.gov.uk/recycling](http://www.islington.gov.uk/recycling)

# Christmas opening hours

Many council services will be available over the festive season. This handy guide should help you find out what is open, and when.

## Contact Islington

Contact Islington is the main port of call for council related queries, and can be contacted on 020 7527 2000. The service remains open for much of the festive holiday season, closing only on 25 and 26 December, and 1 January. Other opening hours are:

	Phone lines	Front desk, 222 Upper Street
22 December	8am-8pm	8am-6pm
23 December	9.30am-1pm	Closed
27 December	8am-6pm	8.30am-6pm
28 December	8am-6pm	8am-6pm
29 December	8am-6pm	8am-6pm
30 December	9.30am-1pm	Closed
2 January	8am-8pm	8am-6pm

### Housing benefits

The housing benefits call centre will close at 4pm on 22 December and reopen at 8am on 2 January. Customers who are due a housing benefit payment in the week commencing 25 December or the 1 January 2007, will receive these payments between 11-18 December.

### Parking enforcement

Parking enforcement will be running as normal, except 24-26 December and 31 December and 1 January, when skeleton staff will enforce against dangerously parked vehicles and obstructions.

### Parking shops

22 and 23 December: 8am-5.45pm  
24-26 December: closed  
27-29 December: 8am-6pm

Opening times for all leisure centres can be found on the opposite page

30 December: 8am-5.45pm  
31 December-1 January: closed  
2 January: 8am-6pm

### Vehicle pound

Open 24 hours a day over the holiday period.

### Noise patrol

The noise patrol will not be available between 24-26 December or 31 December-1 January. An emergency service for public protection will be available on 27, 28, 29 December from 9am-5pm by calling Contact Islington.

### Recycling and refuse collections

Information on recycling and refuse collections is available on [www.islington.gov.uk](http://www.islington.gov.uk) or call Contact Islington on 020 7527 2000.

## Parks and open spaces

All council parks and open spaces, except for Gillespie Park, will be left open on the evening of Christmas Eve and will not be locked again until the evening of 27 December. They will then be left open on New Year's Eve and not locked again until 2 January. Gillespie Park will be closed on 25 and 26 December and closed again on 31 December and 1 January.

## Cemeteries

### Islington and Camden Cemetery, East Finchley and Trent Park, Enfield

These cemeteries will be open for visiting from 9am-4pm throughout the holiday period, except on 25 December when opening hours are from 10am-2pm. East Finchley will be open 9am-5pm on 27-29 December.

### Hampstead Cemetery NW6

Hampstead Cemetery will be open from 10am-4pm on 23, 24 and 26 December and 1 January. On 25 December closing time will be 2pm. Opening hours on 27-31 December will be 9am-4pm.

## Homes for Islington

The six area housing offices and homeownership office will be closed between 23 December and 2 January. Opening hours on 21 and 22 December, and 2 and 3 January, will be 9am-5pm (4.45pm for personal callers).

If you need HFI services urgently during this period, please contact HFI Direct for emergency repairs on freephone 0800 694 3344 at any time.

## Libraries

All Islington's libraries will be closed between 24-26 December, and again on 31 December and 1 January. Libraries will be open as normal at all other times.

## Pharmacies

Several pharmacies in the area will be open over Christmas and New Year. Details are available at [www.islingtonpct.nhs.uk](http://www.islingtonpct.nhs.uk) or from NHS Direct on 0845 46 47.

## Social services

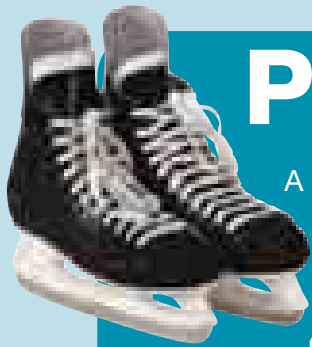
Adult social services are closed on 25 and 26 December and 1 January, but open as normal Monday to Friday, 9am-5pm at all other times.

For out of hours emergencies, call 020 7226 0992.

## Children's services

Laycock Street and Barnsbury Complex (Children's Services) will close at 8pm 22 December and reopen as normal on 2 January.

# Get active



## Panto on ice

A delightful Christmas pantomime will be staged on the ice at Sobell Leisure Centre on 20–23 December at 5pm and 7.45pm. The performance will provide two hours of non-stop entertainment with stunning costumes, exciting music and dance routines that will entertain the whole family. Tickets are only £7 each and can be purchased at Sobell Leisure Centre reception.

*The ice rink will be closed on 18 - 19, 24 - 27 and 31 December 2006 and 1 January 2007. Public sessions will be held on 28 - 30 December 2006 from 12noon - 4pm. The usual opening hours will recommence from 2 January 2007.*



For further information please phone the Sobell Leisure Centre on **020 7609 2166**.

## Improve your swing

**Islington Tennis Centre on Market Road, N7 is running a range of tennis coaching courses in the New Year. The 6-week courses are for all abilities and teach everything you need to know including drills, tactics and matchplay.**



Courses are available for children from 4 up to 16 years old, and for adults.

With six indoor courts and two outdoor floodlit courts, Islington Tennis Centre is the ideal place to improve your swing.



For more information, please contact the centre on **020 7700 1370** or visit **www.aquaterra.org**

## Become a lifeguard



**Gaining a RLSS National Pool Lifeguard Qualification (NPLQ) is the ideal way to start a career in the leisure industry. Considered to be the UK's premier lifeguard training award, the qualification is renowned for its quality, professionalism and integrity. It is the first choice of leisure centre managers throughout the UK.**

Full attendance is required to gain the qualification. Once gained, it is valid for two years. You must be aged 16 and over and a competent swimmer with the ability to swim 400 metres in either frontcrawl or breaststroke.

NPLQ courses are run throughout the year at Archway Leisure Centre, Highbury Pool, Ironmonger Row Baths and Cally Pool.



For more information, please phone Archway Leisure Centre **020 7281 4105**, Cally Pool **020 7278 1890** Highbury Pool **020 7704 2312**, Ironmonger Row Baths **020 7253 4011**

## Make a fitness resolution!

If one of your New Year's resolutions is to get fit for 2007, joining your local leisure centre is the perfect solution. There are seven centres in the borough with lots of activities on offer, from swimming and yoga through to squash and trampolining. It's easy to join and membership is valid across all the centres, and you can pay per visit if you want to.



If you're interested in signing up, visit [www.aquaterra.org/islington](http://www.aquaterra.org/islington), email **memberships@aquaterra.org** or call **020 7253 5365**

### Aquaterra Leisure [www.aquaterra.org](http://www.aquaterra.org)

Islington leisure centres will be open at the following times

	Archway Leisure Centre	Cally Pool	Finsbury Leisure Centre	Highbury Pool	Ironmonger Row Baths	Islington Tennis Centre	Sobell Leisure Centre
Sun 24 Dec	8.30am - 3pm	8.30am - 3pm	X	7.30am - 3pm	X	8am - 3pm	9am - 3pm
Mon 25 Dec	ALL CENTRES CLOSED ON CHRISTMAS DAY						
Tue 26 Dec	ALL CENTRES CLOSED EXCEPT Highbury Pool, OPEN FROM 10AM - 4PM						
Wed 27 Dec	10am - 5pm	X	X	7.30am - 5pm	X	10am - 5pm	10am - 5pm
Thu 28 Dec	10am - 5pm	7.30am - 3pm	X	7.30am - 5pm	10am - 5pm	10am - 5pm	10am - 5pm
Fri 29 Dec	10am - 5pm	7.30am - 3pm	X	6.30am - 10pm	10am - 5pm	10am - 5pm	10am - 5pm
Sat 30 Dec	10am - 5pm	7.30am - 3pm	X	7am - 7pm	10am - 5pm	10am - 5pm	10am - 5pm
Sun 31 Dec	8.30am - 3pm	8.30am - 3pm	X	7.30am - 3pm	X	10am - 4pm	9am - 3pm
Mon 1 Jan 07	ALL CENTRES CLOSED ON NEW YEAR'S DAY						
Tue 2 Jan 07	NORMAL OPENING HOURS RESUME						

Your cut-out and keep guide to the main council numbers.

# Handy contacts

## CONTACT ISLINGTON

Contact Islington is the council's telephone and customer service centre based on the ground floor of **222 Upper Street, N1**. Contact Islington deals with a range of our services including reporting problems and can be reached in the following ways:

Phone: **020 7527 2000**  
 Email: [contact@islington.gov.uk](mailto:contact@islington.gov.uk)  
 Minicom: **020 7527 1900**  
 Fax: **020 7527 5001**

The service centre is open from **8.00am to 6pm Monday to Friday** for your face-to-face service needs. It is also open **every fourth Saturday of the month, from 9am to 1pm**. You can call the **contact centre Monday to Friday from 8am to 8pm**.

### Education and learning

**CEA@Islington**  
 020 7527 5800  
[www.islingtonschools.net](http://www.islingtonschools.net)

**Libraries**  
 020 7527 6900  
[library.informationunit@islington.gov.uk](mailto:library.informationunit@islington.gov.uk)

**Environment**  
 Call Contact Islington on **020 7527 2000** for information about recycling, refuse collections, planning services, the tree service, building control, parking, private sector housing, environmental health and road safety.

**Noise patrol**  
 020 7527 3258  
[noise.issues@islington.gov.uk](mailto:noise.issues@islington.gov.uk)

**Ecology centre**  
 020 7354 5162  
[islingtonecologycentre@dsl.pipex.com](mailto:islingtonecologycentre@dsl.pipex.com)

**Energy efficiency advice centre**  
 0800 512 012  
[energy.advice@islington.gov.uk](mailto:energy.advice@islington.gov.uk)

**Housing**  
 Call Contact Islington on **020 7527 2000** for all housing advice

**HFI Direct (Repairs)**  
 Phone: 0800 694 3344  
 Fax: 020 7527 5440  
 Minicom: 0800 073 0536  
[repairs@homesforislington.org.uk](mailto:repairs@homesforislington.org.uk)

**Housing Benefits**  
 020 7527 4990

**Social care**  
**Adoption**  
 020 7527 4400  
[adoption@islington.gov.uk](mailto:adoption@islington.gov.uk)

**Fostering**  
 0800 073 0428  
[fostering@islington.gov.uk](mailto:fostering@islington.gov.uk)

**Information and Access Team**  
 020 7527 2299

**Islington Learning Disabilities Partnership (ILDP)**  
 Phone: 020 7527 6600  
 Fax: 020 7527 6607  
 Minicom: 020 7527 6619

**Out of hours emergency duty team**  
 020 7226 0992

**Sensory disabilities team**  
 Phone: 020 7527 3394  
 Fax: 020 7527 3279  
 Minicom: 020 7527 3282

**Sport and leisure**  
**Archway leisure centre**  
 020 7281 4105

**Cally pool**  
 020 7278 1890

**Finsbury leisure centre**  
 020 7253 2346

**Highbury pool**  
 020 7704 2312

**Ironmonger row baths**  
 020 7253 4011

**Islington tennis centre**  
 020 7700 1370

**Sobell leisure centre**  
 020 7609 2166

**Finance**  
**Council tax**  
 020 7527 2633  
[council.tax@islington.gov.uk](mailto:council.tax@islington.gov.uk)

**Councillors are the people that know what is going on in your local area and are available to talk to you about any problems you may be having with council services. To find out who your councillor is, phone 020 7527 2000 or visit [www.islington.gov.uk](http://www.islington.gov.uk)**

Children get their information from you... Where do you get yours?



**Islington Children's Information Service**

**Seasons Greetings from Islington Children's Information Service**

Our popular Festive Things to Do leaflet is full of free and low-cost seasonal activities for children and families. It's free to all Islington residents, so give us a call, email us or visit our website for a copy.

Call: **020 7527 5959**  
[ci@islington.gov.uk](mailto:ci@islington.gov.uk)  
[www.islington.gov.uk/cis](http://www.islington.gov.uk/cis)



**ISLINGTON**

**Could you help a child achieve their goal?**

We'll help with:

- training
- 24 hour support
- generous allowances up to £400 per week

To Foster with Islington call **0800 073 0428**

or email us at [fostering@islington.gov.uk](mailto:fostering@islington.gov.uk)  
[www.islington.gov.uk/fostering](http://www.islington.gov.uk/fostering)



**ISLINGTON**

# Healthy advice for winter months

**As we move further into winter the last thing anyone wants is to fall ill. The following advice and information aims to help you and your family stay healthy whatever the weather.**

## Stock up!

A well-stocked medicine cabinet can help you treat many everyday illnesses at home. For example, a small supply of painkillers, indigestion tablets and cold and flu remedies will help you treat a range of minor ailments that you or your family may suffer from over the festive period.

## NHS Direct

You can contact NHS Direct for advice on what to do if you or a family member feels ill. Call 0845 46 47 for confidential, 24-hour a day advice and health information from nurses and professional advisors. You can also visit the website at [www.nhsdirect.nhs.uk](http://www.nhsdirect.nhs.uk) or go to NHS Direct Interactive on digital satellite TV.



## Out-of-hours GP services

If you need to see a GP over the holiday period outside of normal opening hours, please phone your GP practice and listen to the answerphone message for instructions on how to access out-of-hours care.

## Accident and Emergency

Accident and Emergency is very busy over the holiday period so think carefully about whether your condition or illness is an emergency. Always dial 999 in an emergency or visit the Whittington Hospital, (Highgate Hill, N19). If you live in the south of Islington, University College London Hospitals (UCLH) or the Royal London Hospital Accident and Emergency departments may be closer. For emergency eye care, go to Moorfields Eye Hospital (City Road, EC1V 2PD).

## Dentists

For emergency out-of-hours dental care between 6.30pm and 8am please phone 020 7391 6365.



## Patient Advice and Liaison Service (PALS)

If you need some advice about local NHS services or have ideas about how local health services could be improved, please call the Islington PALS team on 020 7527 1086/7.

## Stop Smoking Service

Are you planning to quit smoking in the New Year? If the answer is yes then call Islington's Stop Smoking Service free on 0800 093 90 30 to get help, advice and support.

If your business needs advice on the upcoming smokefree legislation due in summer 2007, visit [www.smokefreeislington.nhs.uk](http://www.smokefreeislington.nhs.uk) or call Claire Newall, Islington PCT's Workplace Stop Smoking Advisor, on 020 7527 1230.

## Emergency contraception

Young people aged between 13 and 18 can be prescribed emergency hormonal contraception by a number of pharmacists in Islington. For a list of participating pharmacists go to [www.islingtonpct.nhs.uk](http://www.islingtonpct.nhs.uk). Young people under the age of 21 can get free confidential sex advice, condoms and emergency contraception from Pulse N7, 164 Holloway Road, N7 8DD. Call Pulse N7 on 020 7527 1300 for more information.

## Visit your pharmacist

Pharmacists can offer advice on minor ailments such as colds, flu, coughs and sore throats, and will recommend appropriate medication if needed. Visiting your pharmacist for advice on treating minor ailments is easier than visiting your GP, but your pharmacist will know when to refer you.

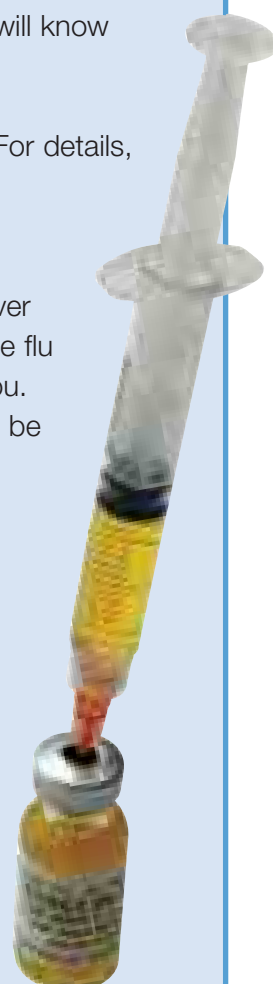
A number of Islington pharmacies will be open throughout the holiday period. For details, visit [www.islingtonpct.nhs.uk](http://www.islingtonpct.nhs.uk) or call NHS Direct on 0845 46 47.

### Free flu jabs

Ten pharmacies in Islington are offering free flu jabs to patients aged 65 and over who are registered with an Islington GP. A trained pharmacist will administer the flu vaccine in the pharmacy consultation room, making sure there is privacy for you. Many pharmacies are open until late, which means you can pop in any time to be immunised. The clinics will be running until January 2007.

### Participating pharmacies are:

Arkle, 39 Junction Road, N19, 020 7272 2283  
JC Wise, 518 Hornsey Road, N19, 020 7272 1264  
Superdrug, 5-9 Seven Sisters Road, N7, 020 7272 4031  
Wellcare, 552 Holloway Road, N7, 020 7263 3152  
Chemitex, 332 Hornsey Road, N7, 020 7272 4869  
Carters, 47 Roman Way, N7, 020 7607 1054  
Devs, 110 Seven Sisters Road, N7, 020 7607 3081  
St Peters, 51 St Peters St, N1, 020 7226 2939  
Clockwork Pharmacy, 273 Caledonian Road, N1, 020 7607 4525  
Highbury Pharmacy, 14 Highbury Park, N5, 020 7226 2666



## Did you know?

Islington's NHS services get very busy over the holiday period, so please use them wisely.

# December 2006

## Planning applications

**Islington Council has received the following applications for development. These may affect Conservation Areas or be for work to Historic Buildings. You can see copies at Contact Islington (open Monday to Friday from 8.30 am to 5.45 pm). Any comments should be made to the Development Control Service P.O. BOX 3333, 222 Upper Street, London N1 1YA**

### Data Protection Act

**Please note that representations on current applications will (in the near future) be published on the Internet. In doing so the Council's Planning Service will endeavour to comply with the Data Protection Act.**

**REPRESENTATIONS SHOULD BE MADE BY 10th JANUARY 2007**

### P062449 & P062450

11, Dresden Road, Islington, London, N19 3BE

Demolition of single storey part width rear extension and erection of a single storey full width rear extension (Conservation Area Consent P062450 also submitted)

### P061963

29-30, Glasshouse Yard, Islington, London, EC1A 4JN

Amendments to the approved scheme (ref: planning permission P051324 dated 16 September 2005) currently under construction, for four (4 no.) additional study bedrooms to the north facing elevation of the rear wing at 5th, 6th, 7th and 8th floors.

### P062487 & P062488

370, City Road, Islington, London, EC1V 2QA

Change of use from offices to residential. Alterations to rear including demolition of rear extension to provide single house and removal of forecourt parking. Installation of new railings (Listed Building Consent application ref: P062488 also submitted)

### P062547

408 - 410, St John Street, Islington, London, EC1V 4NJ

Installation of two externally illuminated fascia signs and one non-illuminated projecting sign.

### P062482

54, Ockendon Road, Islington, London, N1 3NW

Conversion of property from 2 self contained

units to 4 self contained units (1x3 bed, 1x2 bed, 2x1 bed). Erection of a half-width single storey rear extension with roof terrace, installation of railings to roof of existing two storey rear extension, insertion of door and steps at 1st and 2nd floor to the rear elevation, insertion of door at 1st floor level at the rear elevation and insertion of door at the lower ground floor level to the side elevation (PLEASE NOTE, THIS IS AN AMENDED DESCRIPTION)

### P062630

9, Camden Passage, Islington, London, N1 8EA

Display of projecting sign and banner.

### P062512

9-10, Domingo Street, Islington, London, EC1Y 0TA

Change of use of the first and second floor from office (Class B1) use to residential (Class C3) use to provide two x1 bed flats, and installation of galvanised steel balustrade at 2nd floor level.

### P062261 & P062262

Basement Vaults Below, 2 & 3 Kingsway Place, & 5 - 56 Kingsway Place, Islington, London, EC1R 0LS

Change of use to office space, alterations to courtyard elevational treatment and installation of 3 additional air conditioning units (Listed Building Consent Application ref: P062262 also submitted)

### P061540

Blue Glazier House, John Wheatley House, Hazellville Road, Islington, London, N19 3BU

Replacement of PVCU clad timber with double glazed UPVC.

### P062485

Farringdon Station, 36-43, Cowcross Street, Islington, Islington, London, EC1M 6BY

Installation of a customer information display unit to the station ticket hall

### P062569

Flat A, 191, Downham Road, Islington, London, N1 3HH

Internal alterations to first and second floors. Flat to include the installation of a velux roof window in the front roof slope.

### P062475

Rear of 30-31, Great Sutton Street, Islington, London, EC1R 0NA

Demolition of existing single storey office building to rear of 30-31 Great Sutton Street. Erection of a four storey building to provide 2 x 3 bedroom houses at ground, first and second floor level and 140 m<sup>2</sup> of office space at basement level, along with associated alterations.



# ISLINGTON

### P062584

The Slug and Lettuce, Unit E, City Pavilion, 33, Britton Street, Islington, London, EC1M 5UG

Display of 1 x internally illuminated fascia sign, 1 x internally illuminated projecting sign and 1 x internally illuminated menu case.

## Tender

### INVITATION TO TENDER

BUSINESS JOBS AND TRAINING TENDER  
CONTRACT NO. 06/147

Islington Council with the Business, Jobs and Training Partnership (BJTP) is inviting tenders from organisations who can offer delivery services to assist the BJTP achieve targets under economic development and employment block 4 of the Islington Local Area agreement.

The Islington Strategic Partnerships Business Jobs and Training Group and the Kings Cross – Finsbury Park Area Programme – Employment and Business Packages have commissioned a diverse programme of employment support package to tackle welfare advice, volunteering, skill shortages, enterprise, childcare, creative arts and increase quality training and recruitment in the local area. To build on the success to date, the group would like to invite organisations to tender to help them achieve further progress in achieving their challenging targets in 2007-08. The funding is initially to March 2008 with possible extension to March 2009

To promote good practice and an open commissioning process, project proposals are invited from private, public, community and voluntary sector groups.

Should you wish to express interest in this open call tender process please register your details via this link <https://tenders.islington.gov.uk/systems/islingtonqtplanner.nsf>

Islington aims to provide equality of opportunity and welcomes applicants from black and minority ethnic communities and disabled groups. In addition the council actively seeks to use small to medium enterprises (SME) as part of its sustainability policy.

If you would like this expression of interest/tender in another language or format such as large print, Braille or audio cassette, please let us know.

**Contact: Claudia Newman**

**T.: 020 7527 3137**

**[claudia.newman@islington.gov.uk](mailto:claudia.newman@islington.gov.uk)**

**Deadline for project tender submissions will be 12 noon on Friday 05 January 2007.**

# Traffic management

## **FREEGROVE ROAD**

THE ISLINGTON (FREE PARKING PLACES) (DISABLED PERSONS REVOCATION) (NO. 11) ORDER 2006

THE ISLINGTON (PARKING PLACES) (ZONE Y) (NO. 84) ORDER 2006

1. NOTICE IS HEREBY GIVEN that London Borough of Islington on 13 December 2006 made the above mentioned Orders under Sections 6, 45, 46, 49 and 124 and Part IV of Schedule 9 to the Road Traffic Regulation Act 1984 as amended by the Local Government Act 1985.

2. The general effect of the Disabled Parking Places Order will be to revoke an existing disabled blue badge parking place on Freegrove Road, the south-east side, outside No. 56 Freegrove Road.

3. The general effect of the Parking Places Order will be to extend the existing residents parking place on Freegrove Road, the south-east side, so as to include the aforementioned disabled parking place revocation, 1 residents parking place would be gained as a result of these proposals.

4. The Order, which will come into force on 15 December 2006, and other documents giving more detailed particulars of the Order are available for inspection during normal office hours until 24 January 2006 at the following location: Street Management, The Municipal Offices, 222 Upper Street, London N1 1YA

Further information may be obtained by telephoning Andrew Conlan, Street Management on extension 020 7527 2857.

5. Any person who desires to question the validity of any of the Orders or of any provision contained therein on the grounds that it is not within the relevant powers of the Road Traffic Regulation Act 1984 or that any of the relevant requirements thereof or of any relevant regulations made thereunder has not been complied with in relation to the Orders may make application for the purpose to the High Court by 24 January 2006.

## **CORSICA STREET**

THE ISLINGTON (PRESCRIBED ROUTE) (NO. 9) TRAFFIC ORDER 2006

THE ISLINGTON (WAITING AND LOADING RESTRICTION) (AMENDMENT NO. 42) ORDER 2006

THE ISLINGTON (PARKING PLACES) (TIMES AND TARIFFS) (AMENDMENT NO. 2) ORDER 2006

6. NOTICE IS HEREBY GIVEN that the Council of the London Borough of Islington on 13 December 2006 made the above mentioned Orders under Section 6 and 124 and Part IV of Schedule 9 to the Road Traffic Regulation Act 1984 as amended by the Local Government Act 1985.

7. The general effect of the Prescribed Route Order will be to:

(a) introduce one way working for all vehicles except pedal cycles from south-west to north-east on Corsica Street between its junction with St. Paul's Road and a point 72.5 metres north-east of that junction;

(b) prohibit any vehicle, except a pedal cycle travelling in a south-westerly direction, to enter the Corsica Street Cycle Lane on Corsica Street on the south-east side between a point 72.5 metres north-east of its junction with St. Paul's Road and a point 19 metres north-east of that junction; and

(c) introduce a point of "No Entry" for vehicles travelling in a south-westbound direction on Corsica Street to enter Corsica Street beyond a point \* metres north-east of its junction with St. Paul's Road.

8. The general effect of the Waiting and Loading Order will be to further amend the Islington (Waiting and Loading Restriction) Consolidation Order 2004 so that in the lengths of streets specified in the Schedule to this Notice, the hours during which the existing prohibition applies on waiting by vehicles, including waiting for the purpose of delivering or collecting goods or loading or unloading a vehicle, would be changed so that it would apply during the indicated times.

9. The general effect of the Times and Tariffs Order will be to add an additional time definition to the times and Tariffs Consolidation Order.

10. The prohibition referred to will not apply to:

(a) vehicles used for ambulance, fire brigade or police purposes;

(b) anything done with the permission or at the direction of a Police Constable in uniform.

(c) to any person who causes any vehicle to proceed in accordance to any restriction or requirement indicated by traffic signs placed pursuant to Section 66 or 67 of the Road Traffic Regulation Act 1984.

11. The Order, which will come into force on 14 December 2006, and other documents giving more detailed particulars of the Order are available for inspection during normal office hours until 23 January 2006 at the following location: Street Management, The Municipal Offices, 222 Upper Street, London N1 1YA

Further information may be obtained by telephoning Street Management on 020 7527 2857.

12. Any person who desires to question the validity of any of the Orders or of any provision contained therein on the grounds that it is not within the relevant powers of the Road Traffic Regulation Act 1984 or that any of the relevant requirements thereof or of any relevant regulations made thereunder has not been complied with in relation to the Orders may make application for the purpose to the High Court by 24 January 2006.



## SCHEDULE 1

(No waiting and no loading at any time)

Corsica Street

the north-west side, between the north-western kerb-line of St. Paul's Road and a point 75 metres north-east of that point

the south-east side,

between the north-western kerb-line of St. Paul's Road and a point 9.5 metres north-east of that point between a point 18 metres north-east of the north-western kerb-line of St. Paul's Road and a point 71.5 metres north-east of that kerb-line

## SCHEDULE 2

(No waiting at any time. No loading between 8:30 a.m. and 10:00 a.m. and between 2:00 p.m. and 6.30 a.m. throughout the week)

Corsica Street

the south-east side,

between a point 9.5 metres north-east of the north-western kerb-line of St. Paul's Road and a point 18 metres north-east of that kerb-line

## **BLACKSTOCK ROAD**

THE ISLINGTON (PARKING PLACES) (ZONE H) (NO. 83) ORDER 2006

13. NOTICE IS HEREBY GIVEN that London Borough of Islington on 13 December 2006 made the above mentioned Order under Sections 45, 46, 49 and 124 and Part IV of Schedule 9 to the Road Traffic Regulation Act 1984 as amended by the Local Government Act 1985.

14. The general effect of the Order will be to shorten an existing shared use parking place on Blackstock Road, the north-east side, outside Nos. 223 to 229 Blackstock, so as to allow the extension of a Bus Stop adjacent to the parking place.

15. The Order, which will come into force on 15 December 2006, and other documents giving more detailed particulars of the Order are available for inspection during normal office hours until 24 January 2006 at the following location: Street Management, The Municipal Offices, 222 Upper Street, London N1 1YA

Further information may be obtained by telephoning Andrew Conlan, Street Management on extension 020 7527 2857.

16. Any person who desires to question the validity of the Order or of any provision contained therein on the grounds that it is not within the relevant powers of the Road Traffic Regulation Act 1984 or that any of the relevant requirements thereof or of any relevant regulations made thereunder has not been complied with in relation to the Orders may make application for the purpose to the High Court by 24 January 2006.

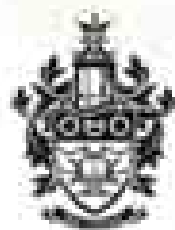
## **Dated 13 December 2006**

Bram Kainth

Assistant Director for Street Management

For everything  
you need to know  
about living,  
visiting or working  
in Islington....

[www.islington.gov.uk](http://www.islington.gov.uk)



ISLINGTON