



ISLINGTON

www.islington.gov.uk

Issue 33, April 2006



Don't be a drip save those drops

Thames Water started domestic hosepipe bans from 3 April.

Since the start of November 2004, we have had only 68% of expected rainfall. This means that less water has filtered through the ground to replenish underground water sources.

Residents can help conserve water and observe the hosepipe ban by using methods such as:

- watering their gardens and trees with their 'grey' water (recycled bath or shower water and laundry rinsing water)
- planting species of plants/trees and shrubs that need less watering
- placing water retaining capsules into the compost of hanging baskets to reduce the amount of watering needed.



Islington's ecology centre has more information about plant care and water conservation call them on **020 7354 5162**. Information on water saving in the home is available by contacting the North West London Energy Efficiency Advice Centre on **0800 512 012**.

Fields of light

Hundreds of Islington children twinkled along Holloway Road waving their home-made lanterns as part of the borough's first Festival of Light at the end of March.

And larger than life luminous puppets danced between the 500 lantern holders, creating a dazzling spectacle in a procession down Holloway Road to Highbury Fields.

Around 1,500 people gathered at Highbury Fields

where there was ice-skating, world music and dancing.

After the luminous parade, the children planted their lamps making the playground into a magical lantern garden.

Hannah Khureshi, age 10, from William Tyndall School said she had a great time at the festival. "The lamps were good fun to make and made the garden looked very beautiful - I hope they do it again."

Her mother, Mrs Khureshi commented: "This was a nice event for Islington to hold - a fantastic evening for families."

Katie Saentaweessook, from Highgate, said: 'It was great, we joined in the procession on the way. The weather was horrible but it was nice to have something coming into Spring because usually there's nothing at this time of the year at all.'



Inspirational people

From nurses to champions of youth, see pages eight and nine to find out about the people who make Islington such a great community in this month's feature on the winners of the 2006 Mayor's Civic Awards.

Look inside for more about what's happening in and around Islington...



Car club

Exchange

Heroes

Be prepared

Birdman

Welcome

Welcome to Issue 33 of *Islington*

From Helen Bailey,
Chief Executive



Local elections are taking place across the country on Thursday 4 May 2006. In Islington this means that we will be electing the whole council (48 councillors) to run the council for the next four years. This is the most important opportunity you have to have a say in the issues, which matter in the borough, and everyone is encouraged to use their vote.

For the first time in local elections, polling stations will open from 7.00am until 10.00pm on 4th May. You can vote in person at your designated polling station or send in a postal vote. To keep up to date with who's standing and the timetable for the election check the council's website www.islington.gov.uk or call 020 7527 2000.

In this issue we are celebrating some of Islington's otherwise unsung heroes; the winners of the Mayor's Civic Awards. These and many other people go the "extra mile" and put themselves out for others.

We also feature the Emergency Planning Team, who work to keep Islington safe and prepared for any emergency. They work with the police and other emergency services to deal with emergencies of every sort, burst water mains and fires – being amongst the most common.

With Spring now with us, at last, we are looking for blooming wonderful floral displays, so do enter the Islington in bloom competition, detailed on page 11.

Helen Bailey

Your Shout

Below are some of your letters, emails and phone calls we received in response to the last issue

Dangerous cyclists @

Can something be done about cyclists on footpaths and those who go through red lights. This practice is so dangerous, it seems cyclists think the Highway Code does not apply to them.

Pavement cycling is a serious problem in Islington and across the UK. Although stopping it is the responsibility of Islington Police the council helps to discourage pavement cycling in a number of ways:

- we are improving cycle facilities on Islington's roads, making them a safe choice for cyclists
- our cycle training programme teaches that pavement cycling is illegal, dangerous and inconsiderate
- our cycle training officer discourages footpath cycling in presentations to schools

You should raise your concerns with your local safer neighbourhood police team.

Pedestrian access @

I went to the recycling centre off the Holloway Road recently. I had seen a sign saying no pedestrians but, as I don't drive a car, I went anyway. Upon reaching the area two chaps rushed forward to tell me I wasn't supposed to walk there, but they took the recycling in for me. Could something be done for people using the centre on foot? This would make sense since Islington is going all out to help us all recycle our household waste.

There has always been pedestrian access at the Reuse and Recycling Centre, and

we're sorry to learn you were not shown the way.

Access is via Caledonian Road and Cottage Road (diagonally opposite the Caledonian Rd tube station). There are bins at the entrance to the facility for paper, glass, mixed cans, plastic bottles and cardboard. Other materials can be taken to the facility reception in Cottage Road between 8am-8pm. Find out more at www.islington.gov.uk/recycling.

Protect the trees @

I have been delighted to see that there has been substantial tree planting in the Holloway Road. Sadly, a number of these little trees have been vandalised. Would it be possible to reuse the stout iron railings that currently sit around some established trees in the Nag's Head area to protect the new trees, instead of the 'wicket' type supports you have used? The older trees don't need such high levels of protection anymore.

Thank you for your suggestion - we will definitely look at the metal guards and, if suitable, try to reuse them around the new trees we will be planting from November this year.

These guards may reduce the likelihood of vandalism, but they do not make the trees entirely safe.

Unfortunately, we can't reuse tree guards around trees we have already planted, as the bases need to be installed before, or at the time of, planting.

Your Views...



Do you think we are doing the right things?

Is there anything you think we have done well?

How can we improve our service to you?

What do you want to see in this newsletter?

We want to hear what you have to say. So, if you want to make a comment about any aspect of the services we provide, please

contact us using the information below:

Phone: 020 7527 3416

Email: residents.news@islington.gov.uk

Write to: Helen Bailey, Chief Executive
Islington Council, Town Hall,
Upper Street, N1 2UD

Tell us what you think. After all, if you don't tell us something is wrong we can't do anything about it...

We look forward to your feedback.

We reserve the right to shorten or amend at our discretion.

Patient choice?

A new NHS scheme is giving local people more choice about how their healthcare is provided.

If you need to see a specialist, your doctors' surgery can now offer you a choice of hospital to go to, and will allow you to book an appointment at a time that suits you.

The scheme gives a choice of up to five local hospitals allowing you to simply take the earliest available appointment at any hospital, or letting you choose to take an appointment at a particular hospital.

You can book to see a specialist in your doctor's surgery immediately. Or use a booking hotline number so you can book your appointment in your own time. You can also book via a secure website.



For more information pick up a leaflet at your doctors surgery, visit www.nhs.uk or call the Islington PALS team on **020 7527 1086**.

Car clubs cut costs



Streetcar, Islington's new car club, gives you convenient access to a car 24 hours a day, seven days a week. Cars can be booked online or by phone at competitive rates.

Streetcar member, Jake Courage, says: "I used to own my own car but I was sick of paying to insure and maintain a car I rarely used. I sold my car and joined Streetcar 6 months ago. Now I use the Angel and Islington cars on a regular basis." Islington Council and Streetcar aim to expand

the network so that all Islington residents are living within five to ten minutes' walk of a car club vehicle.

Existing lifetime members of CityCarClub are being offered free lifetime membership of Streetcar (value £25).



For more information about joining Streetcar call **0845 644 8475**, or visit www.streetcar.co.uk.

Building homes for the future

Market Estate tenants watched the jaws of a demolition digger ripping through solid concrete, as the building of their long-awaited new homes began in March.

A 7,500m² disused car park was demolished to pave the way for a £40 million programme of investment. Over the next six years residents on the Market Estate will benefit from new homes, community facilities, shops and improvements to the nearby parks.

The demolition and building work will be carried out in phases and the first new homes are due for completion by Autumn 2007.

The redevelopment is the result of a ballot in which 88 per cent of residents voted to transfer from Islington Council to Southern Housing Group.



For more information contact Southern Housing Group on **020 7553 6436** or email info@shgroup.org.uk.

Use your voice – vote!

Local elections are taking place across the country on Thursday 4 May 2006. This is your chance to have your say about issues that affect your everyday life. Your vote can make a real difference.

Islington has 48 councillors to be elected across our 16 wards. You can vote in person at your designated polling station or send in a postal vote. Applications for postal votes need to be received by 5pm on 18 April 2006.



To keep up to date with who's standing and the timetable for the election check the council's website www.islington.gov.uk or call **020 7527 2000**.

Are you recycling more than you're throwing away?

"I love the green waste scheme - it saves me a lot of work.

I didn't have anything for the binmen today."

*Rita,
Islington resident*



Islington has three recycling collection schemes from your doorstep:

- green box / recycling bag
- green garden waste
- kitchen waste

For more information please call 020 7527 2000 or email contact@islington.gov.uk

www.islington.gov.uk/recycling



ISLINGTON

Applying for British Citizenship?

Islington Council is introducing a Checking Service for British Citizenship applications. Contact the Islington Citizenship Team to help you by:

- Obtaining an application form immediately;
- Making sure your application is correctly filled in;
- Checking, certifying and copying your documents so you can keep your important documents and passport;
- Providing an opportunity to discuss your application face to face;
- Submitting your application to the Home Office by secure post.

Applications containing all necessary information, documents and fees tend to be resolved more quickly than incomplete applications.

Please note this is not a priority service.

For information on the service contact the Islington Citizenship Team
Telephone: 020 7527 3553 or e-mail: citizenship@islington.gov.uk



Nationality
Checking Service

British
CITIZENSHIP



ISLINGTON

School admissions

The vast majority (over 70%) of Islington parents receive an offer from their first choice of secondary school.

Islington schools are increasing in popularity. This year there was an overall increase in applications to Islington schools of 8%. A survey returned by 1,030 parents at offer acceptance stage confirmed that 86% were happy with the school offered to their child, and many commented positively about the fairness of the system.

Only 1 in 20 applicants were not offered any of their preferred schools by the offer date, but places in Islington schools are available to all of these children, should they want them.

An exhibition of Islington secondary schools is held every year in the Business Design Centre. This will give you the opportunity to talk to the heads of all Islington secondary schools and get information and advice about admissions policies and applying for a school place for your child. This year's secondary school exhibition is on 18 and 19 September, 5pm-7pm.

Schools exchange environmental know-how

Primary school students from Norway picked the brains of our local kids to learn how our schools deal with environmental issues in a recent investigative visit.

The year six students visited St Josephs School to gather information on how they deal with litter, recycling and anti-social behaviour.

The international exchange project was organised by the A1 Borough schools environmental project, which is working with schools along the A1 to raise environmental and social awareness.



Ambler pupils climb high

Ambler pupils recently celebrated the opening of a brand new climbing frame as part of an upgrade of their new children's centre.

Children involved in the design of the climbing frame were on hand to demonstrate its advantages. Some of the special features are: 'soft' tarmac to cushion any falls, a climbing rope and scramble board entry, and a 'fireman's pole' that children can slide down.

The improvements at the Blackstock Rd-based primary school are part of a £1.4million upgrade which includes a new children's centre. The children's centre will provide 'wraparound' childcare for working parents, and operate ten hours a day, five days a week for 48 weeks of the year.



We ♥ Fruit

When it comes to promoting healthy eating, the children at Moreland school are experts.

Moreland pupils have banished unhealthy snacks and are eating fresh fruit after changes to the school tuck shop. The shop provides low cost fruit for older pupils while younger pupils receive free fruit from the Department of Health Fruit and Veg Scheme.

Three students conducted a survey of school meals, finding out what foods children like to eat

and how they would like their school meals to be improved. Information gathered in the survey is used to help assess the performance of the school meals' provider Scolarest.

And healthy living doesn't stop there. The school has a garden, where pupils grow their own vegetables, and then have a barbecue to cook and eat the produce. Classes in nutrition and cooking are held after school hours, and a 'health week' takes place every summer to involve children in activities such as skipping, aerobics and yoga.



Sleep easy – the council

In the unlikely event of a major emergency befalling Islington – residents and business can rest assured that the council is prepared and ready to spring into action whatever the situation.

Your emergency response team



Islington's Emergency Planning Unit (EPU) is a team of people with the job of preparing for events they hope will never happen.

The unit is ready to respond to any incident from a small localised matter right through to a major emergency. Incidents can range from a

building collapse, to a serious fire, to a burst water main or even a civil emergency. Should any of these incidents happen, careful planning and strong partnerships with other agencies like the police and ambulance service are crucial to minimising harm and distress to people as well as essential to restoring the area back to normality.



What to do in an emergency

In the event of an emergency, first call **999**. If the incident affects a number of people or an area of the borough, then call the emergency planning officer on **020 7527 3195**. If they're unavailable call Contact Islington on **020 7527 2000**, 24 hours, 7 days a week.

You should state that the call is an emergency, give brief details and leave your phone number. Ask for the 'on call' LALO or emergency planning officer to be informed and ask that they telephone you back.

Planning for action

Drawing up plans is the EPU's main function. These plans, which are regularly reviewed, aim to reduce both the likelihood of an emergency and the potential impact it could have.

One of the main responsibilities for the council is likely to involve re-housing people either temporarily or on a more permanent basis depending on the nature of the incident or the requirements of other agencies.

The EPU has identified a number of sites around the borough that could be used as temporary rest centres, and has made arrangements to quickly open up these venues and staff them with trained council employees.



Did you know?

Three incidents on average are reported to the EPU each month.



has got you covered



People behind the team

The EPU has two full time members of staff but they are backed up by 16 other volunteer staff – all of which have full time day jobs with the council. The volunteers are local authority liaison officers (LALOs) and are specifically trained in responding to emergencies. Two of our dedicated LALO's explain why they volunteered to do the job.

Name: Lloyd Coombes
Day Job: Manager of Alsen and New Park Day centres



Why did you volunteer to become a LALO?

I thought it was a wonderful opportunity to give something back to the council.

What kinds of incidents have you been involved in?

I've been involved in many incidents but the most memorable are a gas explosion that

turned two flats into a pile of bricks and a house collapsing after the neighbours did some redevelopment work on their property. Luckily no one was hurt in either of these incidents but we did have to re-house the people involved.

What's the best thing about being a LALO?

The challenge. When the phone rings you never know where it's going to lead. The EPU staff have worked hard to ensure we're able to tackle any emergency no matter how big or small. Being an Islington resident I sleep safely at night knowing a colleague is on-call!



Name: Janine Brady
Day Job: Head of young people's services

How does being a LALO impact on your daily life?

We work in pairs and we have a rota so each pair is on call for a two-week period. For that period it does mean that your daily life is restricted. You need to take your phone everywhere with you and make sure that if a call arrives you have all the information you need, the right emergency contact numbers, and your 'grab bag' which consists of warm clothing, wellies, protective footwear and emergency chocolate!

What kinds of incidents have you been involved in?

I have been involved in a number of incidents, ranging from a call about a squirrel who got into a building through a broken window and set off the alarms, through to an electrical mains failure resulting in a total loss of power to one of the borough's housing estates.

How does being a LALO compare to your day job?

My job as head of young people's services is exciting and challenging as it is, but being part of the local authority emergency response team gives me an added dimension and helps me put my problem-solving and leadership skills to good use. I also particularly like the contact with residents.

Fire – the EPU in action

The EPU recently helped Imran Gala and his pregnant wife Salaiha when their home was damaged by fire.

Following news of the fire in a ground floor shop on Junction Road in Archway, local liaison officer Bill Hickmott informed the EPU and mobilised council staff.

While police and fire services dealt with the actual incident, it was the job of the EPU to assess the needs of the families affected by the fire.

Mr Gala and his wife who live in a flat above the shop were not injured but their home was filled with potentially harmful smoke. Concerned for the safety of the couple, Bill arranged for them to be re-housed in temporary accommodation. "Even though we're not council tenants,

the council was so helpful to us," says Mr Gala. "I was worried that all the fumes could be harmful to my pregnant wife."

He adds: "I didn't expect to receive this kind of help. You assume you will just be left to sort it out yourself so we are really grateful to the team for their support."



Be prepared

In case of an emergency you should know:

- where and how to turn off water, gas and electricity supplies in your home
- how your family will stay in contact
- how to tune in to your local radio station.

Did you know?

You can find out how prepared Islington is for an emergency online. Log on to www.islington.gov.uk/community/boroughemergencyplan. Or contact the Emergency Planning Unit directly on 020 7527 3195/2690 or email emergencyplanning@islington.gov.uk.

Deserving winners – Islington great

Eleven inspirational people have been recognised in the fifth annual Mayor's civic awards ceremony. Judged to have made an outstanding contribution to life in Islington, the winners have all been nominated by local people as a way of saying thank you. Nominations were considered by a panel including Islington's Mayor, police commander Barry Norman, Deputy Lieutenant Colonel Brian Kay and Islington Gazette editor Tony Allcock, whose newspaper sponsors the awards.



“These people selflessly contribute to the greater community without seeking reward. They have an indomitable spirit and character that is peculiar to Islington. Often their efforts go unnoticed – except by those who directly benefit from their endeavours. These awards help to correct that – by shining a light on these unsung and humble heroes and heroines to whom Islington owes such a debt of gratitude.”

Tony Allcock, Islington Gazette

And the 2006 winners are...

Manna Wong

A volunteer at the Islington Chinese Association, Manna is in high demand as an interpreter and welfare adviser.

David Hankins

Honoured for his contribution to Islington schools as a chair of governors at Hugh Myddleton School and New North Community School, during a restructure in 2003.



Nuala McPherson

As a member of the Finsbury three District Nurse Team, Nuala has been nominated for the exceptional care and support she has shown to local people.

Jack Lambert

Chair of the Friends of New River Walk, he headed up a lottery bid that brought in over a million pounds to revitalise the Walk. Jack is also a keen local conservationist and a fundraiser for the Friends of the Rose Bowl Youth Club.

Peter Miller

Peter is a highly respected and active member of St John Ambulance. He is also a member of the Royal British Legion and Islington Scout District Association.

Ken Doherty

Recognised for his tireless support of football at Market Road pitches, Ken has helped thousands of local players over the past 30 years.



Jim Lagden

Co-founder of the Angel Canal Festival which regularly attracts more than 7,000 visitors each year. Jim also co-founded the Friends of Islington Museum and is passionate about Islington and its history.

Mary White & Irma Cambron

Recognised for helping to create the Toffee Park Adventure Playground which provides a free play area and affordable childcare to around 300 families in the EC1 area and Islington.

the people making



In focus...

Desmie McLean – volunteer extraordinaire

A leading figure in the borough's volunteering community, Desmie has notched up more than 35 years of service to those in need.

She is the founder of Islington's African Caribbean Association as well as a member of the Law Centre Committee, ensuring that disadvantaged people have access to legal representation.

"I originally began volunteering to escape some domestic problems I was going through at the time," recalls Desmie. "I found that by helping other people I gained strength and a sense of fulfilment."

Her tireless work can range from cooking meals for single parents and taking their children out for a hamburger to accompanying older people to the doctors, and offering practical advice on stress management.

"I wish more people would take up volunteering. While making money is important, nothing compares to the satisfaction of reading a book to a sick child in hospital or having a chat with someone who is feeling lonely and isolated. That's what being part of a community is all about."



In focus...

John Jacobs – champion of youth

"I've never wanted awards for what I do. Just knowing in my heart that I've been able to help my community is enough for me," says 86 year-old John who has been a pioneer of youth projects in the borough for more than 50 years.

John was a founding member of the Islington and Finsbury Youth Club in 1980, which housed the Angel Boxing Club. The project has kept generations of Islington's youngsters on the straight and narrow and also opened the doors to girls who wanted to play football, some of whom went on to great heights with the Arsenal Ladies Team.

John recalls: "When I came back from a German prisoner of war camp at the end of the Second World War, I pledged that I would do my best for the youth in my community. Seeing so many young people die during the war and knowing the deprivation they'd suffered, I wanted to dedicate my life to helping them."

Now housed on the campus of City and Islington College in Goswell Road, the youth club offers a welcoming place for youngsters to meet and get fit.



Nominate your hero...

Local people can nominate any individual, family or group who has made a major or unique contribution to life in Islington and deserves recognition. If you'd like to nominate someone for next year's awards, download a nomination form at: www.islington.gov.uk/Council/Political/Mayor/civic.asp or call 020 7527 3113 or email: the.mayor@islington.gov.uk.

The apprentice team

School leavers keen on developing a great career locally should think about the apprentice schemes run by the council or job opportunities through the Arsenal Business Enterprise Team.

Crunching numbers – apprentice style

Local girl Lucy Sofocleous joined Islington's three-year apprentice accounting technician scheme as a school leaver last September.

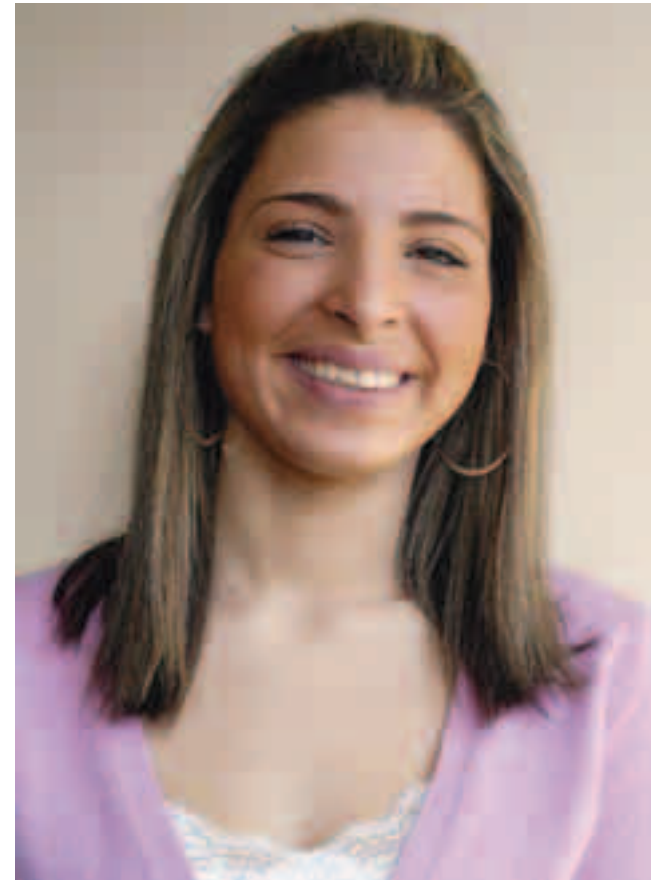
The Member of Accounting Technicians (MAT) trainee said: 'So far I've had a great experience. I've been working in the accounting team in the finance department reconciling accounts. The workplace is very different from school but I much prefer working.'

Lucy's education combines attending weekly classes with her duties in the finance team. She and two other trainees have all passed their first exam this year.

Want to get involved?

Islington's finance department is looking to recruit two to three more trainees starting this September.

The scheme offers school leavers a full-time post and a salary starting at about £18,000 a year. All fees are covered by the department for the three-year course, which leads to an NVQ as an Accounting Technician.



For more information about joining Islington's finance department as an apprentice contact Lorraine Howard on **020 7527 3407** or email lorraine.howard@islington.gov.uk.

Foster carers are people like you

We'll help with

- training
- 24 hour support
- generous allowances

Give us a call **0800 073 0428**
or email us at fostering@islington.gov.uk
www.islington.gov.uk/fostering

Arsenal uncovered

The Arsenal Business Enterprise Initiative (ABET) works to help local people, including local companies, access job opportunities coming out of the Arsenal development.

They found work for local historian – and fanatical Arsenal supporter – Samir Singh as a researcher to help put together an exhibition on the historical background of the club.

Samir, who is an Oxford classics graduate said: 'My dream job is going well. There's lots of work but it's not exactly a chore. I willingly strive for perfection. I was in the British Library yesterday and a friend from university happened to be working there too. Walking past the desk he saw my pile of books and remarked that I was still as Arsenal mad as ever. It really is funny how it's all turned out.'

Contact Glenroy Anderson on **020 7527 3439**
or email ganderson@urban.islington.gov.uk.

On a knife's edge

Stopping young people from carrying and using knives has a form of protection, is the aim of a new education programme run by the Safer Islington Partnership.

While Islington has a low level of knife crime occurring in schools one incident is one too many according to Sergeant Paul Colwill. "Islington schools are safe but it is important that pupils understand that carrying a knife in any circumstances is both dangerous and could have serious consequences."

"Too often we hear young people tell us they are carrying a weapon for protection – but the fact is they are putting themselves and others in danger. We are teaching them that the best defence is to avoid unsafe situations."

Young people taking part in the programme are encouraged to avoid risky situations by being aware of the routes they take to and

from school, to travel with people they trust and advised to keep valuables out of sight.

They are also taught about the legal aspects of carrying an offensive weapon and the bloody results of becoming a victim of knife crime. Parents should also be vigilant about household knives and not be afraid to ask questions if a knife goes missing.

However, the past 5 years has seen a 45% reduction in knife related crime in Islington. A two month long knife amnesty is currently in place. Knives can be dropped off with no questions asked at Islington and Holloway police stations. Over 84 knives have already been handed in.



For more information contact Sergeant Paul Colwill on **020 7421 0514**.



Blooming marvellous!

Islington will once again be brimming over with blooms with the launch of the third annual Islington in Bloom competition.

Open to all residents, schools, community gardens and businesses in Islington, the competition's categories include:

- best residential garden
- best container garden
- best business premises
- best school grounds

The top three entries in each category get prizes. All first time entrants to the competition are entered automatically in the 'best new entry' category.

You can take part in the competition by putting up hanging baskets, planting flower beds or by donating plants or seeds to a local community garden or school.

Nominate your own garden or someone else's. The only condition is that except for schools and community gardens all entries must be visible from the street.

Closing date is Wednesday 31 May.



To enter or get further information contact Mark Rowe on **020 7527 4953** or email: **mark.rowe@islington.gov.uk**.

Handy contacts in this issue

For anything you want to know about Islington Council, first call Contact Islington on **020 7527 2000** or email **contact@islington.gov.uk**

This telephone and face to face customer service centre is on the ground floor of 222 Upper Street, N1.

The **020 7527 2000** service is open for business longer than usual so residents can deal with the council on the way to, or from, home and work.

The telephone contact centre is open Monday to Friday from 8am to 6pm and the service centre is open from 8.30am to 6pm Monday to Friday. Contact Islington will be open one Saturday a month from 9am to 1pm. A resource room also offers internet access to all public services, a quiet area for form-filling and space for checking planning applications.

A1 borough project
020 7527 2443

Arsenal business enterprise team
020 7527 3439

Archway leisure centre
020 7272 6009

Aquaterra
020 7523 5365
www.aquaterra.org

Cally pool
020 7278 1890

Children information service
020 7527 5958

Council tax
council.tax@islington.gov.uk
020 7527 2633

Ecology centre
020 7354 5162

Electoral services
020 7527 3110
www.islington.gov.uk/Council/Political/VotingAndElections

Emergency response unit
020 7527 3195
emergencyplanning@islington.gov.uk

Energy efficiency advice
0800 512 012

Highbury pool
020 7690 0413

Ironmonger row baths
020 7253 4011

Islington tennis centre
020 7700 1370

Libraries
020 7527 2000

Mayor's civic awards
020 7527 3113

Recycling information
020 7527 2000
www.islington.gov.uk/recycling

Sobell leisure centre
020 7686 2363

Southern housing group
020 7553 6436
info@shgroup.co.uk

Streetcar
0845 644 8475
www.streetcar.co.uk

**For everything
you need to know
about living,
visiting or working
in Islington....**

www.islington.gov.uk



ISLINGTON

Home shelter



Are you experiencing domestic violence?
Do you no longer feel safe in your home?
We can help.

For more information or referral to this scheme you can contact the following:
Domestic Violence Matters: 020 7421 0340
Islington Women's Aid: 020 8289 2121
The Housing Aid Centre: 020 7527 2000



You have a right to live free from fear and violence
In an emergency, call the police on 999.



Contact Islington
to speak to your
council

020 7527 2000



contact@islington.gov.uk



Could you set the standard?

Islington Council has a vacancy for an independent member on its Standards Committee. This committee oversees high standards of behaviour by councillors and advises on good practice in relation to ethics and probity. It also provides training and hears cases on potential breaches of the Council's Code of Conduct. The committee consists of two councillors and three independent members and is chaired by one of the independent members.

Interested?

As an independent member you will have a good knowledge of the local area and its communities. You will be able to demonstrate an independent and analytical mind, be able to thoughtfully consider evidence and contribute to committee discussion on conduct and possess tact and good interpersonal skills. You will not be an employee of the council or another local authority or directly related to an employee or a current Islington councillor. In order to establish and maintain your

independence you will not have had contact with the council which could be seen as prejudicial to your independence and you will not hold any current political office.

The committee meets about 4 times a year in the evening. Although this is not a paid position, the council will reimburse reasonable expenses.

How to apply

Please send a CV with a covering letter describing how you fulfil the role to: Louise Round, Director of Corporate Resources, Islington Town Hall, Upper Street, N1 2UD. Please mark your envelope 'Standards Committee Independent Member'.

The closing date for CVs is **Thursday, 22 May 2006.**

For further information or an informal discussion about the role of an independent member please contact: Louise Round on 020 7527 3174 or John Lynch on 020 7527 3002.



ISLINGTON

Public notices



Road Closures

Road Traffic Regulation Act 1984 Section 14(1) and 16A: Proposed and Made Notices

We, the London Borough of Islington, are giving notice that we intend to make the following Orders to enable works and special events to be carried out on the highway.

confirmed road closures

Road:	Effect:	Diversion Route:	Dates:
Chapel Market and Baron Street Streetscape improvements	<ul style="list-style-type: none"> (a) prohibit vehicular traffic on Baron Street between its junction with Chapel Market and the southern boundary of Nos. 26 to 30 Baron Street; (b) prohibit vehicular traffic on Chapel Place; (c) prohibit vehicular traffic on Northwest Place; (d) prohibit vehicular traffic on White Conduit Street; and (e) suspend the point of "No Entry" from Penton Street into Chapel Market 	for Baron Street via White Lion Street, Penton Street and Chapel Market	<ul style="list-style-type: none"> (a) Chapel Place starting on 3 April 2006 until 10 May 2006; (b) Northwest Place starting on 17 April 2006 for one day only and 24 April 2006 for one day only. (c) Baron Street starting on 1 May 2006 until 5 June 2006; (d) White Conduit Street starting on 8 May 2006 until 12 July 2006; and (e) The point of "No Entry" from Penton Street into Chapel Market will be suspended between 1 May 2006 and 5 June 2006.
Horsell Road & Ronalds Road Resurfacing works	<ul style="list-style-type: none"> (a) prohibit vehicular traffic on Horsell Road between Nos. 16 and 28 Horsell Road; (b) prohibit vehicular traffic on Ronalds Road between Nos. 6 and 13 Ronalds Road; and (c) suspend the one way working on Ronalds Road between its junction with Horsell Road and its junction with Holloway Road. 	via local signage	start on 1 April 2006 and finish on 7 April 2006
Liverpool Road Water mains replacement	<ul style="list-style-type: none"> (a) prohibit vehicular traffic on Liverpool Road between its junction with Chapel Market and its junction with Islington High Street; and (b) suspend the banned right turn from Penton Street into Pentonville Road 	<ul style="list-style-type: none"> (a) northbound via Liverpool Road, Theberton Street and Upper Street; and (b) southbound via Tolpuddle Street, Penton Street and Pentonville Road 	start on 3 April 2006 and finish on 13 April 2006
Wharfdale Road Local safety scheme	<ul style="list-style-type: none"> (a) prohibit vehicular traffic at the island site of Wharfdale Road and Caledonian Road on all sides; (b) prohibit vehicular traffic on Balfe Street at its junction with Wharfdale Road; (c) prohibit vehicular traffic on Northdown Road at its junction with Wharfdale Road; (d) suspend the one way working on Balfe Street between its junction with Railway Street and its junction with Wharfdale Road; and (e) suspend the one way working on Northdown Road 	<ul style="list-style-type: none"> (a) Wharfdale Road southbound onto Caledonian Road: <ul style="list-style-type: none"> (i) through traffic via York Way, Brewery Road and Caledonian Road; (ii) local traffic via Killick Street, All Saints Street and Caledonian Road; (iii) buses via York Way, Copenhagen Street and Caledonian Road; (b) Wharfdale Road northbound onto Caledonian Road: <ul style="list-style-type: none"> (i) through traffic via York Way, Brewery Road and Caledonian Road; (ii) local traffic via Caledonian Road and Kings Cross Gyratory; (iii) buses via York Way, Copenhagen Street and Caledonian Road; (c) Caledonian Road: <ul style="list-style-type: none"> (i) through traffic via Brewery Road, York Way, Wharfdale Road and Caledonian Road; (ii) buses via Copenhagen Street, York Way, Wharfdale Road and Caledonian Road; (d) Northdown Street via Caledonian Road and Balfe Street; and (e) Balfe Street via Railway Street and York Way 	<ul style="list-style-type: none"> (a) 3 April 2006 to 24 April 2006 (Balfe Street at its junction with Wharfdale Road); (b) 3 April 2006 to 17 April 2006 (Northdown Street at its junction with Wharfdale Road); (c) 8 April 2006 to 9 April 2006 (Wharfdale Road island site with Caledonian Road for southbound traffic); (d) 15 April 2006 to 16 April 2006 (Wharfdale Road island site with Caledonian Road for northbound traffic); (e) 22 April 2006 to 23 April 2006 (Caledonian Road island site with Wharfdale Road for southbound traffic); (f) 29 April 2006 to 30 April 2006 (Caledonian Road island site with Wharfdale Road for southbound traffic);

You can get more information about these proposed and made Orders from:

■ Street Management
The Municipal Offices
222 Upper Street
London N1 1YA

■ or by phoning our
Street Management
Division on extension
020 7527 8006

■ Dated 10 April 2006



ISLINGTON

Bram Karith, Assistant Director for Street Management

**LONDON BOROUGH OF ISLINGTON
BINGFORD STREET & HUNTINGDON STREET**

THE ISLINGTON (PARKING PLACES) (DOCTORS) (NO. 2) ORDER 2006
THE ISLINGTON (PARKING PLACES) (ZONE E) (NO. 17) ORDER 2006
THE ISLINGTON (PARKING PLACES) (ZONE S) (NO. 18) ORDER 2006

1. NOTICE IS HEREBY GIVEN that the Council of The London Borough of Islington on 31 March 2006 made the above mentioned Orders under Sections 45, 46, 49 and 124 and Part IV of Schedule 9 to the Road Traffic Regulation Act 1984 as amended by the Local Government Act 1985.

2. The general effect of the Orders will be:

- (a) on the south-east side of Huntingdon Street, outside No. 30 Huntingdon Street, to remove a doctors parking place and provide additional residents parking space; and
- (b) on the south-east side of Bingfield Street, south-west of Bemerton Street, to remove pay and display parking space and provide a doctors parking place.

These proposals will result in the provision of additional residents parking space for one vehicle in Huntingdon Street and the loss of pay & display parking space for one vehicle in Bingfield Street.

3. The Orders, which will come into force on 17 April 2006, and other documents giving more detailed particulars of the Orders are available for inspection during normal office hours until 12 May 2006 at the following location:

Street Management, The Municipal Offices, 222 Upper Street, London N1 1YA

Further information may be obtained by telephoning Street Management on extension 020 7527 8006.

4. Any person who desires to question the validity of any of the Orders or of any provision contained therein on the grounds that it is not within the relevant powers of the Road Traffic Regulation Act 1984 or that any of the relevant requirements thereof or of any relevant regulations made thereunder has not been complied with in relation to the Orders may make application for the purpose to the High Court by 12 May 2006.

Dated 10 April 2006

Bram Kainth, Assistant Director for Street Management



Memorial safety in cemeteries

Lawn grave areas

Islington and Camden Cemetery Services will be carrying out memorial safety checks in all cemeteries under its control. The process started in February 2006 and will continue as a rolling programme until further notice.


Safety testing

Every memorial will be pressure tested for stability. If the memorial is unsafe, Islington and Camden Cemetery Services will secure the memorial temporarily. This will be done by placing two stakes on either side of the headstone with supportive banding. A warning sign will also be attached. We will try to contact the registered grave owner to let them know what we have done and what they are responsible for. We believe this is the least obtrusive way to ensure the safety of the public. This is a temporary measure and so grave owners must make arrangements for a permanent solution.

Owner responsibility

All grave owners have a duty to ensure memorials erected are in a safe condition. Owners can contact the cemetery office on **020 8883 1230** if they have any queries or require advice on making their memorials permanently safe.

Before the inspection, a list of the areas to be tested will be placed on notice boards at all entrances to the cemetery, as well as the areas concerned.

Road Closures

Road Traffic Regulation Act 1984 Section 14(1) and 16A: Proposed and Made Notices
We, the London Borough of Islington, are giving notice that we intend to make the following Orders to enable works and special events to be carried out on the highway.

proposed road closures

Road:	Effect:	Diversion Route:	Dates:
Dove Road Bus stand and entry treatment works	prohibit vehicular traffic between its junction with Essex Road and its junction with Southgate Road	(a) eastbound via Essex Road, Balls Pond Road and Southgate Road; and (b) westbound via Southgate Road, Balls Pond Road and Essex Road	start on 2 May 2006 and finish on 10 June 2006
Featherstone Road & Mallow Road Resurfacing works	(a) prohibit vehicular traffic on Featherstone Street between its junction with City Road and a point opposite the western boundary wall of Nos. 19 to 23 Featherstone Street; and (b) prohibit vehicular traffic on Mallow Street between its junction with Featherstone Street and a point 5 metres north of that junction. The Mallow Street closure will be night works only	via local signage	start on 15 May 2006 and finish on 19 May 2006.

You can get more information about these proposed and made Orders from:

- Street Management
The Municipal Offices
222 Upper Street
London N1 1YA
- or by phoning our
Street Management
Division on extension
020 7527 8006
- Dated 10 April 2006



Bram Kainth, Assistant Director for Street Management



**HEARD THE ONE ABOUT THE
BLADE THAT WAS CARRIED
JUST FOR PROTECTION...**

...IT'LL HAVE YOU IN STITCHES

STAY ALIVE - SAY NO TO KNIVES