



It all adds
up to a
great place
to live.



Your Guide
to Council Tax
2009/10



Contents

- 2 **Section 1**
Information about your council tax
- Paying your council tax
What your council tax pays for
How to pay your council tax
We can help
- 10 **Section 2**
Calculating your council tax
- Your band and valuation
Exemptions, discounts and benefits
- 14 **Section 3**
Your money gets results
- Cleaner and greener
Safer communities
Stronger communities
- 26 **Section 4**
Islington Council financial information
- Doing the sums
- 30 **Section 5**
Information about other agencies
- Greater London Authority (GLA)
The London Pensions Fund Authority
Lee Valley Regional Park Authority
Environment Agency Thames Region

Introduction

As the recession continues, there can't be a household in Islington that isn't feeling the pinch in some way. Now more than ever, it's the council's job to ensure we continue to deliver value for money services for residents.

We've spent the last year tightening our own belts, making £14m savings so that we can help the people in our community who most need our support. As part of this, local pensioners who'd set aside money for their retirement only to see the value of their investments fall will now benefit from a £100 rebate on their council tax bill.

Now especially, it is vital we focus on what local people view as most important.

In our budget consultation last autumn, you told us that tackling anti-social behaviour is your top priority. So this year we'll be investing more than £3m on community safety including taking enforcement action against anti-social behaviour and strengthening our mobile youth services.

Education, and giving every child the best possible start in life, is also a top priority for everyone. We've invested tens of millions of pounds into our schools and we're reaping the rewards with last year's best ever GCSE and A level results. Over the next few years you will see every secondary school

in the borough completely rebuilt or substantially refurbished, with work already started on four of the schools. We're also aiming to roll out free school meals to all children in Islington nursery and primary schools in the next school year.

Thirdly, you said you wanted the investment in a cleaner, greener borough to continue, so we now have over 150 sweepers on our streets every weekday and between 80 and 100 at weekends. Your efforts also mean we're well on our way to becoming the most environmentally-friendly borough in the capital – around 30% of the household waste we produce is now recycled.

Because we've been prudent and invested wisely in the boom years, we have cash set aside to regenerate rundown areas of the borough – such as Highbury Corner – and to improve

our parks and open spaces. Not only will these investments help to improve our local environment, they'll also create much needed jobs and bring a boost to the local economy.

The difficult economic climate presents different challenges to different people, which is why the council has set aside £6m to support residents in as many practical ways as we can. We're giving additional financial support to the Law Centre and the Credit Union so they can provide extra support and advice to Islington residents with housing or financial worries. Plus, we've set aside cash to be able to offer some practical help with mortgage problems and for those struggling to make ends meet day to day. For more ways the council can support you through the challenges ahead, please visit www.islington.gov.uk/moneyadvice

Four-star council services for the first time ever

This year Islington has been awarded a 'four-star rating' – the highest possible score – by the independent Audit Commission for the first time ever. The Commission said we "provide good value for money" and are "improving strongly".

Every council in the country receives an annual Comprehensive Performance Assessment score, and this year Islington moved from three stars to four. This means we now rank as one of the best performing councils in the country. While it's great to receive this external validation, this is no time for complacency and the council will continue to strive to improve services for residents, while ensuring we provide value for money.

Section 1: Information about your council tax

Paying your council tax

Islington is one of London's most exciting and diverse boroughs. Your council tax helps make it the place we know and love, and with it we can provide a broad range of services to ensure Islington remains a great place to be.

We never forget that it's your money we're spending, and our annual budget consultation helps us learn what you want your council tax to be spent on.

As you'd expect, it pays for the usual things like rubbish collections and street lighting. But it also helps provide things like road safety training in schools, travel for the elderly and training for people looking for work. In fact, your council tax contributes to hundreds of services across the borough, which means every Islington resident benefits in some way.

Every home in Islington receives a bill. It doesn't matter if it's a house or flat, whether it's owned or rented. Together, residents contribute more than £80m each year to life in the borough.

And this all adds up to a great place to live, work and visit.

Your 2009/10 council tax charge

Your band	Market value of your home (April 1991) £	Islington Council £	Mayor of London (GLA) £	2009/10 full council tax charge £	Direct debit 12 monthly instalments £
A	Up to 40,000	641.25	206.55	847.80	70.65
B	40,001 to 52,000	748.12	240.97	989.09	82.42
C	52,001 to 68,000	855.00	275.40	1,130.40	94.20
D	68,001 to 88,000	961.87	309.82	1,271.69	105.97
E	88,001 to 120,000	1,175.62	378.67	1,554.29	129.52
F	120,001 to 160,000	1,389.37	447.52	1,836.89	153.07
G	160,001 to 320,000	1,603.12	516.37	2,119.49	176.62
H	320,001 and above	1,923.74	619.64	2,543.38	211.95

This does not include an extra charge for properties in Lloyd Square of £270.74 for each Band D property.

Section 1: Information about your council tax

Your bill is made up of several charges. Firstly, there's a charge from us, which pays for your local services. Then there's another charge from the Greater London Authority (GLA). This is approved by the Mayor of London and is used to pay for services across London, such as improvements to transport, the 2012 Olympics and extra police and fire services.

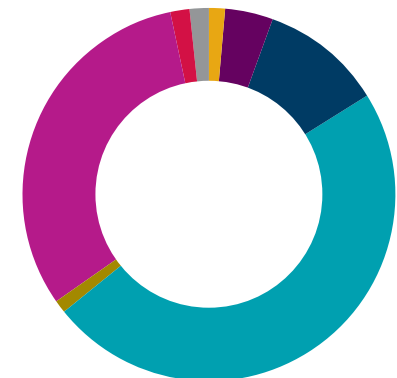
Although every home gets a bill, you may be one of the people entitled to either a reduced rate or an exemption from paying council tax. So if you're disabled, over 65, a single adult living alone or your property is empty, please turn to pages 11 to 13 to see if you're paying the right amount.

2009/10 Islington council net budget – £239m



- Children's Services £67.9m
- Housing and Adult Social Services £74.6m
- Environment and Regeneration £51.7m
- Other £44.8m
- Lee Valley Regional Park Authority £259k

2009/10 levies to Londonwide bodies – £15.771m



- Lee Valley Regional Park Authority £259k
- London Boroughs Grants Scheme £654k
- London Pensions Fund Authority £1.661m
- North London Waste Authority £7.574m
- Environment Agency (Thames Region) £169k
- Concessionary Fares (Freedom Pass) £4.942m
- Inner London Coroner's Court £256k
- Traffic and Control Liaison Committee £256k

What your council tax pays for

The council works on behalf of every Islington resident – that’s more than 180,000 people – and our top priority is to provide value for money.

We’re proud to say that your council tax funds more than 600 services in the community. We couldn’t do it without your contribution.

Here are just a few examples of where your money goes:

- + collecting 70,000 tonnes of household waste and recycling almost 30% of it
- + providing 150 street cleaners every weekday (and up to 100 at weekends) to keep Islington’s streets clean
- + supporting more than 130 foster families
- + helping residents receive more than £3.17m in previously unclaimed benefits and concessions
- + providing leisure centres and sports facilities, visited two million times each year.



Your council tax funds more than 600 services in the community.

How to pay your council tax

We want to make paying your council tax as easy as possible. The ways to pay are listed below.

Direct debit

Paying your council tax by direct debit couldn’t be easier:

- + there’s no queuing, paperwork, cheques or postage
- + you can spread the bill over a year*
- + you can pay on a day that suits you with a choice of four payment dates
- + you can get peace of mind by never missing a payment date again
- + you are protected by an immediate money back guarantee if an error occurs.

Set up your direct debit online today at www.islington.gov.uk/directdebit

You can also request to pay by direct debit by calling 020 7527 2633 between 8am and 8pm. Please have your bank details and council tax account number ready when you phone. All direct debit payers will receive a £20 discount** on their 2009/10 council tax bill and free entry into a monthly prize draw. Alternatively, you can choose to donate your £20 discount to the council’s Climate Change Fund. Simply email council.tax@islington.gov.uk with your name and council tax account number and put ‘Climate Change Fund Donation’ in the subject line.

Pay in Post Offices or shops

You can pay by cash, cheque or debit card at any Post Office or shop that displays the PayPoint or PayZone symbols. You must use your council tax Payment Card. To request a card, call 020 7527 2633.

Online at www.islington.gov.uk/payit

You can make online card payments on the ‘Pay It’ pages on our website at www.islington.gov.uk/payit

*The option to pay council tax over 12 payments instead of ten only applies to residents paying their bill by direct debit. **Discount applies after two direct debit payments are received.

Section 1: Information about your council tax

By phone

You can make credit and debit card payments by phone. Simply call our 24-hour automated service on 020 7527 8000. When you call, please have your council tax account number and your bank card to hand.

By telephone/internet banking

To pay your bill using your own bank's telephone or internet service, please quote Islington Council's bank account number 61282692 and sort code 08-90-33, together with your eight-digit council tax account number.

By cheque

Cheques should be crossed and made out to 'Islington Council'. Remember to allow at least five working days for a cheque or bank payment to clear. Please write your council tax account number on the back of the cheque. We cannot accept post-dated cheques.

Prompt payment


You can pay your entire council tax bill in one go. Any resident who pays their bill in full by 30 April 2009 will receive a £20 discount. Prompt payment discount will only apply at the start of the financial year and your bill must be in excess of £20.

Paying by instalments

Paying your council tax by instalments means you can spread the cost of your payments over ten months*. However, if you fall behind with your instalments or your payments are late, you will have to pay the full amount that's owed. Please note, we will send a maximum of two reminders before taking legal action.

Please note: Any personal information you give us is held securely and will be used only for council purposes. Information that was collected for one purpose may be used for another council purpose, unless there are legal restrictions preventing this. Islington may share this information where necessary with other organisations, including (but not limited to) where it is appropriate to protect public funds and/or prevent fraud in line with the National Fraud Initiative guidelines. The use of data by the Audit Commission in a data matching exercise is carried out with statutory authority under its powers in Part 2A of the Audit Commission Act 1998. Please see www.islington.gov.uk/dataprotection for more information.

*12 months if paying by direct debit.



“Paying by direct debit has made my council tax so much easier to deal with. I don't even have to think about it.”

**St. Mary's resident
Heli Rajasalo**



Direct debit is the easiest way to pay your council tax – plus, you'll get a £20 discount on your bill.

Section 1: Information about your council tax

We can help

Please get in touch if you have any questions about anything to do with your council tax bill. Whether it's about the amount you pay, how to pay, or how to reduce the amount you pay, we're here to help. The quickest and easiest way to get answers to your council tax questions is to go to www.islington.gov.uk/counciltax

Difficulty paying?

If you're having difficulty paying your council tax, we can give you help and advice. You may be entitled to a benefit or discount to help you pay. Just call us on 020 7527 2633 and we'll discuss your situation.

If you would like independent financial advice from your local Citizens Advice Bureau you can write to Michael McCann (Senior Advisor):
Islington GP Surgeries, Unit 3, 111-122 Grafton Road, London
NW5 4BA. E: Michael.mccann@camdencabservice.org.uk T: 020 7424 6859

The Islington and City Credit Union can also provide support and advice to help you deal with money worries.

T: 020 7561 1786 E: info@iccu.coop W: www.iccu.coop

Paying your share

Every resident receives some sort of service from the council, so it's only fair that everyone contributes. Anyone who doesn't pay their bill will face legal action and will have to pay extra costs on top of the outstanding council tax amount. If someone still refuses to pay following legal action, we have the right to take further action, such as calling in bailiffs to seize goods for the amount that's owed. In some cases, we may also take bankruptcy action.

Your views

If you're unhappy with any part of the council tax service, please let us know so we can improve what we do.

Contact us

Revenues and Benefits, Islington Council, PO Box 34750, London N7 9WF.
E: council.tax@islington.gov.uk T: 020 7527 2633



“ I joined the Islington Citizens Panel so I could get a chance to have my say.”

Holloway resident
John Baloolal



Islington is a place where local people's views count. Around one in eight adults in Islington has responded to at least one consultation in the last year.

Your band and valuation

Every home in the borough falls into one of eight valuation bands (A to H). Your bill shows which band you're in. Your council tax charges are worked out as a percentage of the band D rate, as shown in the table on page 2.

The total band D rate is worked out by dividing the money to be raised by council tax (£81m) by the number of band D equivalent homes in the borough (84,262).

Property valuation

The amount of council tax you pay depends on which council tax band your property falls into. Your council tax band is determined by the market value of your home, which is decided by the Valuation Office Agency, not the council. They value your home based on its market value in April 1991.

Appealing your valuation band

You may appeal your valuation band if you've become a council tax payer for the first time, or the property has recently been placed in a valuation band you don't agree with. In both cases, you must make your appeal within six months of receiving your first bill.

Please note, you're still required to pay your council tax while your appeal is being considered.

Send your appeal to:

London Central Group, Valuation Office,
2nd floor, Cityside, 40 Adler Street, London E1 1EE

W: www.voa.gov.uk

T: 020 7441 7000

F: 020 7441 7099

E: londoncentralgroup.vo@voa.gsi.gov.uk

Exemptions, discounts and benefits

In some cases, certain individuals and properties are eligible for discounts or exemptions from council tax. If you think any of the following applies to you, please contact us at council.tax@islington.gov.uk or on 020 7527 2633.

Property exemptions

Properties that are 'exempt' from council tax (both occupied and unoccupied) include:

Examples of unoccupied properties:

- + properties undergoing structural alterations or major repairs, or newly built homes (exempt for six months only)
- + properties owned by a charity and empty for less than six months
- + properties that are unfurnished and empty for less than six months
- + properties left empty by someone who is in prison or held on remand
- + properties that are the main or only homes of people who now live in hospital or a care home
- + properties awaiting 'probate' or 'letters of administration' to be granted (they are exempt for a further six months after probate is granted)
- + properties that, by law, cannot be lived in
- + properties about to be lived in by a minister of religion
- + properties of people receiving care somewhere other than a hospital, care home, nursing home or hostel
- + properties left empty by someone who has moved to provide care to another person
- + properties left empty by students who live somewhere else during term-time
- + properties that are empty and have been repossessed by a mortgage company
- + properties that are being dealt with by a trustee handling the affairs of someone who has been made bankrupt
- + properties that are pitches or moorings that are not occupied by caravans or boats
- + properties that are empty annexes, forming separate parts of homes that are being lived in.

Section 2: Calculating your council tax

Examples of occupied properties:

- + students' halls of residence
- + homes lived in only by students
- + armed forces accommodation
- + homes lived in by members of visiting forces
- + homes lived in only by people under 18
- + homes lived in only by people who are mentally impaired
- + the main homes of diplomats
- + homes that are part of other homes lived in by relatives (such as granny flats).



Disability discount

If a member of your household is disabled, and any room in your home has been adapted for a disabled person, we may be able to reduce your bill.

Single person discount

If you're the only person over 18 living in your home, you should receive a 25% 'single person' discount. Please remember that if someone else moves in, you need to let us know as it may affect the amount of council tax you pay.

Older person discount

This year the council has introduced a £100 annual council tax discount for households where the taxpayer, or their partner, will be 65 or over on 1 April 2009. This will only be available to council tax payers.

For more information, visit www.islington.gov.uk/counciltax or to claim your discount, telephone 020 7527 2633.

Section 2: Calculating your council tax

Council tax discounts

People entitled to council tax discounts:

- + full-time students, student nurses, apprentices and youth training trainees
- + people living in hospital or care homes
- + people who are mentally impaired
- + people staying in certain hostels or night shelters
- + 18 and 19-year-olds who are at, or who have just left, school or college
- + care workers on low pay who live where they work
- + members of visiting forces
- + members of religious communities
- + people in prison, except those in prison for not paying their council tax or a fine.

Some individuals and properties are eligible for council tax discounts.

Council tax benefits

If you receive Income Support, Jobseeker's Allowance, tax credits or are on a low income, you may be able to get help to pay your council tax. So to make sure you're getting the right help, you need to make a claim. You can either call us on 020 7527 4990 or pick up a claim form from your local area housing office.

There's more information about council tax benefits on the Department for Work and Pensions website at www.dwp.gov.uk. If you apply for pension credit, you'll get a form to claim for council tax benefit along with your pension credit application.

Empty homes

If your house or flat is empty, we can help you to bring your property back into use by giving you advice on grants, letting and repairs. Since 2005 we've helped to bring almost 700 empty homes back into use. For more information, please call us on 020 7527 6080.

Section 3: Your money gets results

Cleaner and greener

You're right to expect the streets you live on and visit to be clean and well-maintained and we're dedicated to doing this to as high a standard as possible. This year, on top of longstanding services such as street sweeping and graffiti and fly-tipping removal, we tackled one of your biggest bugbears head on with the introduction of our new Dog Control Orders. With certain parks and open spaces now designated dog-free zones and penalties for dog-owners who allow their pets to foul our parks and pavements, Islington is cleaner than ever before.

As always, reducing the borough's impact on the environment is high on our agenda. Last year we made further inroads towards becoming the most environmentally-friendly borough in the capital by widening our recycling service, supporting residents to travel green, significantly reducing our carbon footprint and supporting environmental projects through the Climate Change Fund.

In fact, in the past 12 months alone:

- + we cleaned 90,238 square metres of pavement and scrubbed away 5,088 square metres of graffiti
- + our Green Team made 11,000 visits to council properties to encourage recycling on estates
- + we gave out 2,500 bags to pet owners to encourage them to clean up after their dogs, and issued 600 informal cautions to those who didn't
- + we allocated 130 parking bays to Streetcar, helping around 5,000 residents to use a car without owning one
- + we reduced our own carbon emissions by 11%, saving £676,000 on energy costs.



"The council gave me the extra incentive to travel green. Now I ride my bicycle to work every day and am feeling a lot better for it."
Highbury resident
Niaz Jaumdally

We're committed to making it as easy as possible to travel green. That's why last year we delivered more than £1m worth of improvements to cycle routes and facilities.

Section 3: Your money gets results

Of course, there is always more to do as we strive to make Islington as clean and green as possible, so this year we'll be investing:

- + an extra £1m to keep our parks litter-free and improve grounds maintenance on our housing estates
- + £250,000 to make our streets even cleaner
- + £11m to improve our roads and pavements
- + £9m to boost our parks and open spaces.



Waste not want not

Islington residents take environmental issues seriously and so do we. Last year we invested almost £4m on making it as easy as possible for you to re-use and recycle. As a result, almost every street property in the borough now benefits from a doorstep recycling, food and garden waste collection service. Plus, we've extended the service we provide to estates with additional chute recycling schemes, door-to-door collections and convenient recycling sites.

The results have been impressive. We are well on our way to becoming the most environmentally-friendly borough in the capital – recycling around 30% of our waste. Household waste is down 11%, which as well as helping to protect the environment for future generations, translates to a financial saving of around £500,000 compared with the amount it would have cost us to send that waste to landfill.

Section 3: Your money gets results

A clean sweep

We understand why you want cleaner streets because we do too. Not only does it make Islington a more attractive and enjoyable place to be, but it helps ward off anti-social behaviour, making for a safer and happier community.

Islington's streets are cleaner than ever before thanks to investment in street cleaning initiatives last year, and it shows, according to long-time resident Carol Carney. Carol said:

"I've noticed a big improvement. I've noticed less dog fouling, I've noticed street sweepers on a more regular basis, but the biggest change has been the rubbish collection. We used to have three separate collections which meant there was rubbish on the pavement half the week, but now they have combined the three collections. It makes a big difference to our quality of life."

Carol's right. We introduced control orders last year, which means we can take action against dog owners who disregard fouling guidelines. Plus, several of our green spaces are now dog-free zones, making them safer and cleaner for you to enjoy. We're putting more cleaners on the street, more often – in fact, an additional 65 full-time positions were created last year. So there are now 150 people cleaning the streets every week day and up to 100 at weekends. And we've added to our fleet of split-bodied refuse collection vehicles, to make the service more effective and convenient.

As a result of these schemes, and many more, last year Islington received its best ever Local Environmental Quality Survey scores, based on issues such as litter, graffiti and fly-posting.

This year, we expect those scores to be even better so keep a look out for more improvements where you live.



Section 3: Your money gets results

Safer communities

Keeping our streets, parks and estates safe is at the top of everyone's list, and we take this responsibility very seriously. In an inner-London borough this is never an easy task, but we work closely with the police to keep Islington and its residents as safe as possible.

In the past year your council tax has helped fund a whole raft of community safety projects from increased street patrols to better lighting, and tough action on those who carry or supply knives.

As a result, street crime in the borough has dropped by 21% over the last 12 months.

On top of this, we've worked with local businesses to ensure they understand and meet licensing and food safety regulations so residents and visitors can enjoy Islington safely. Plus, by talking to local people and listening to their views on the safety problems in their area, we've been able to take action to make things better.

There isn't enough space to list everything your money has helped to support but to give you an idea, in the last year you've helped pay for:

- + 14 Police Community Support Officers to work in Islington schools, taking part in everything from patrols of the main routes to school, to truancy sweeps
- + an outreach service for homeless people in Islington, helping them to access health and housing services
- + lights and high-visibility sashes for more than 500 cyclists, helping keep them safer at night
- + safety inspections of about 2,000 restaurants and fast food shops
- + entry phones and additional lighting on our housing estates.



"The new lighting has improved security, it looks wonderful, it's low energy and it brings St. John's Church to life."

Upper Holloway resident
Sue Hallam



We want everyone to feel safe on Islington's streets. That's why more than 6,000 Islington street lights have been replaced and an additional 1,360 installed as part of a five-year programme completed last year.

Section 3: Your money gets results

There's always more to do though, so next year we're investing:

- + £150,000 to support parents and children at high risk of getting involved in anti-social behaviour
- + extra cash to provide more youth services on Fridays and Saturdays in targeted areas
- + in continuing to support the North Islington Police team to tackle crime hotspots and the introduction of a dedicated Police team for Angel
- + in continued funding for 16 Police Community Support Officers.



Off the streets and into sport

Groups of young people congregating on the streets can be intimidating and one thing residents – young and old – have consistently told us is that they'd like more positive activities for children and teenagers. As a result, Islington now invests about £5.5m on youth services each year. The council invested £250,000 in youth centre development last year and has pledged to match that investment this year and next. We've also invested more than £2.5m in our parks, introducing football pitches and other sports activities for young people to enjoy safely, and we've set aside £24m to create leisure centres worthy of the Olympics, to help young people enjoy sport and develop their talents.

Section 3: Your money gets results

All change at the Nag's Head

The Nag's Head town centre is a colourful, bustling hub of activity, which attracts residents and visitors alike. But it wasn't always that way.

Islington Council has invested countless hours and hundreds of thousands of pounds transforming the area from one with a reputation as a crime hotspot to the thriving centre it is today.

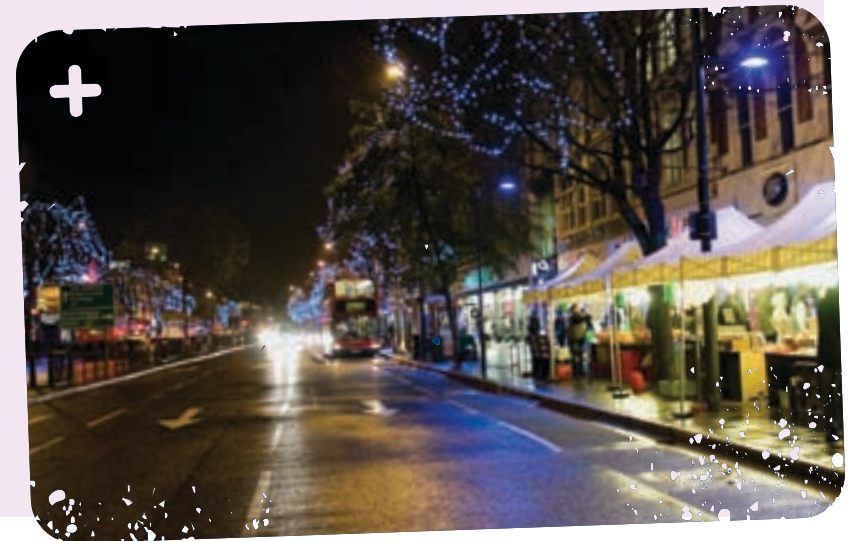
Islington resident Mary Gibson, who has lived and worked near the Nag's Head for 40 years, said:

"The changes have made a huge difference. The awful counterfeit cigarette sellers seem to have gone and the new plants and lighting make it feel like someone cares. It certainly feels a lot safer and cleaner and there's a real community feel about the place now."

Mary isn't the only one satisfied with the changes, which include an increased police presence, additional lighting, dedicated street environment wardens and the introduction of a radio link scheme.

The council's 2008 business survey found 67% of business owners and managers felt safe in the area, compared with 44% in 2007.

Of course the job's not done, and the council will continue to invest in improving Nag's Head this year.



Section 3: Your money gets results

Stronger communities

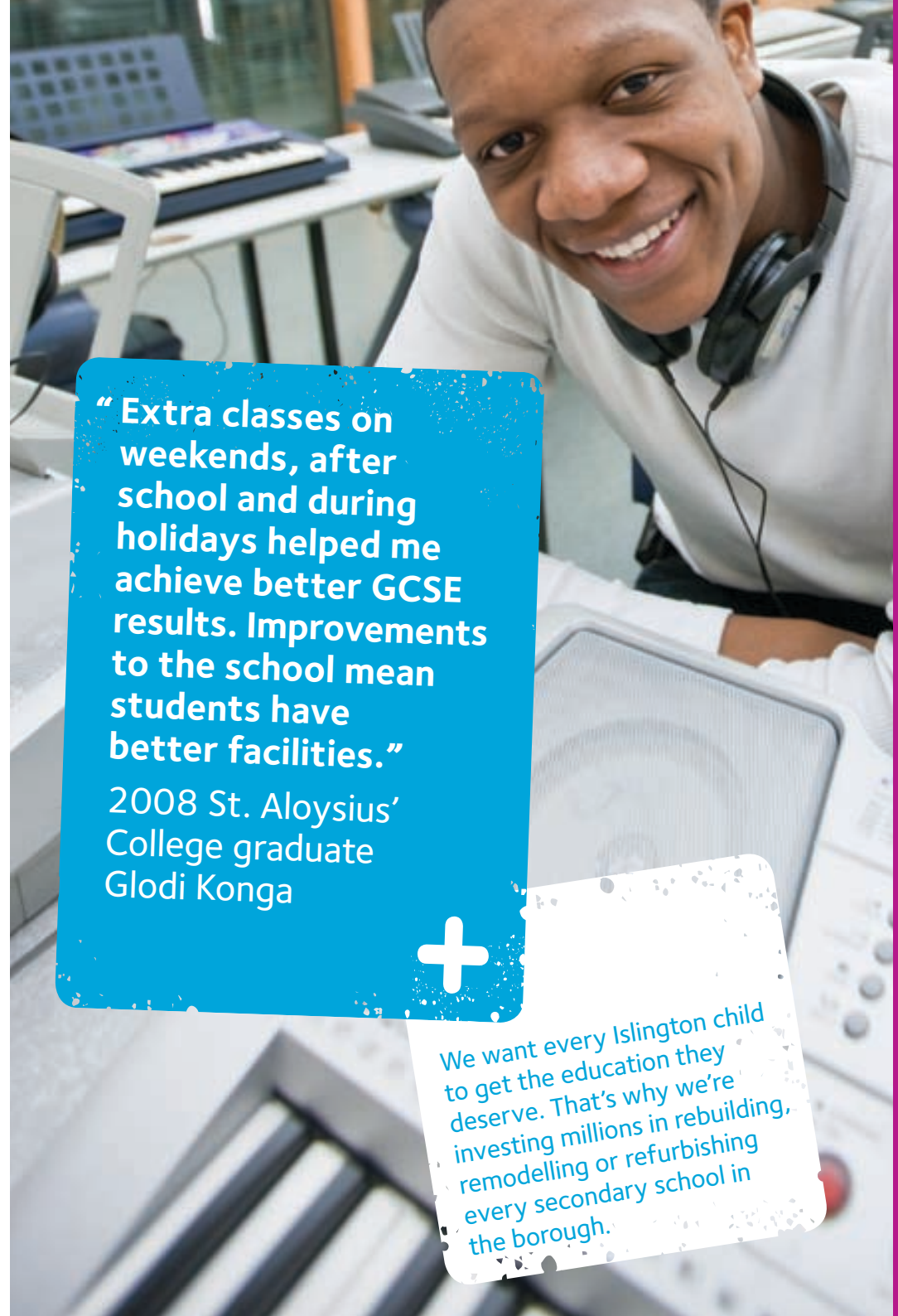
Diversity is part of Islington's charm, but it also poses a challenge for the council. The borough is home to many nationalities, cultures and socio-economic groups, resulting in different educational, employment, health and social needs.

Every Islington resident should find it easy to access the services they need, so we're working with the police, NHS Islington, housing and education providers, and a range of community groups to make this happen.

We want to give every Islington child the best possible start in life. Education is a big part of this and we've already started on our commitment to rebuild or dramatically refurbish every secondary school in the borough.

Here are just some of the things you've helped to fund during the past 12 months that are helping to make Islington's community even stronger:

- + a £25m investment in the Bridge School for children and young people with special educational needs
- + more than 1,000 students graduating from our adult and community learning courses
- + a £1.35m pledge to support community access to legal advice centres
- + 12 new play rangers to help Islington kids have fun outdoors
- + £300,000 to help older people stay in their homes for longer – reducing their need for residential and nursing care
- + 24,000 Freedom Passes giving elderly and disabled residents free access to transport.



“Extra classes on weekends, after school and during holidays helped me achieve better GCSE results. Improvements to the school mean students have better facilities.”

2008 St. Aloysius' College graduate
Glodi Konga

We want every Islington child to get the education they deserve. That's why we're investing millions in rebuilding, remodelling or refurbishing every secondary school in the borough.

Section 3: Your money gets results

We know there's more to be done to ensure everyone has the same opportunities to fulfil their potential, so this year our investment includes:

- + extension of the Freedom Pass to give holders access to transport 24 hours a day
- + extra funding to the Islington Credit Union, so they can provide support to residents during the recession
- + £81m on ensuring our council homes meet the Government's Decent Homes Standard
- + £120,000 towards school uniform grants to help struggling families when children transfer from primary to secondary school
- + opportunities for free access to sports facilities for Islington's young people
- + we're aiming to roll out free school meals to children in all Islington nursery and primary schools in the next school year
- + £3.4m for aids and adaptations to allow people to stay in their own homes for longer.



Community living

Strengthening our community means offering support and protection to all residents. In Islington, we take that responsibility very seriously and provide dedicated services to cater for our diverse population.

For example, we want to encourage Islington's older residents to live independently for longer, so last year we invested about £43m on services designed specifically for them. This included more than £10m towards care at home and a further £18m on residential and nursing home care.

These services have been recognised by the independent Commission for Social Care Inspection, which awarded Islington the highest possible rating for services and support provided to vulnerable older people and disabled adults for the second year running.

Section 3: Your money gets results

Ways into work

A working community makes for a stronger community.

That's why Islington invests more than £200,000, on top of more than £2m worth of successful bids for external funding each year, to help jobseekers find work and employers find staff.



Between April and December last year more than 450 residents secured paid work through the council, while a further 740 received training or gained qualifications.

Local resident Margaret Scantlebury is just one of them.

Margaret turned to the council in search of a fresh start and was offered a carpentry apprenticeship through the Construction Works programme. Margaret said:

"I needed work but I also wanted something that would give me some flexibility and teach me new skills. I had always wanted to do something hands-on and the council helped me find an apprenticeship. I have been working with Quinn London for more than a year now and I am really, really enjoying it. It's rewarding to create a finished product – to have something tangible that I created or fixed."

Our employment services will be more important than ever during these difficult economic times and we'll continue to assist residents who require our support.

As a major employer in Islington, we have also made a commitment to provide 100 apprenticeships within the council this year, to give our school leavers the best possible start in their careers.

Doing the sums

Council revenue and expenditure

This table shows what money we expect to get and how we plan to spend it.

Islington services	2008-09			2009-10		
	Council spending £000	Income £000	Net budget £000	Council spending £000	Income £000	Net budget £000
Environment and regeneration	123,276	77,010	46,266	124,262	72,607	51,655
Children's services	233,654	167,650	66,004	235,823	167,937	67,886
Housing and adult social services	339,551	265,145	74,406	341,881	267,252	74,629
Central support, corporate costs and provisions*	329,788	300,802	28,986	345,295	319,211	26,084
Other services**	15,148		15,148	15,771		15,771
Contingencies	2,862		2,862	3,667		3,667
Gross spending	1,044,279	810,607	233,672	1,066,699	827,007	239,692
Contribution to/from reserves	1,500	1,630	-130	1,598	2,340	-742
Total budget requirement	1,045,779	812,237	233,542	1,068,297	829,347	238,950
Formula grant			-155,254			-157,901
Collection fund surplus			0			0
Islington Council tax requirement			78,288			81,049
Greater London Authority (GLA) council tax requirement			25,847			26,106
Total council tax requirement			104,135			107,155

*Provisions are money set aside to meet expected liabilities, eg insurance costs and bad debts.

**Other services are payments to London-wide bodies such as the Environment Agency, London Pension Fund Authority and the North London Waste Authority.

Spending and government grants 2009-10

London Borough of Islington	£000	Per band D
Net expenditure	238,950	£2,835.80
Formula grant	157,901	£1,873.93
Islington council tax requirement	81,049	£961.87
Greater London Authority council tax	26,106	£309.82
Total Council Tax	107,155	£1,271.69
Number of band D properties in Islington		84,262

Other information	2008-09	2009-10
Estimated capital spending (£000)	180,736	217,849

Our balances at 31 March 2009 are estimated at £11.7m (General Fund) and £7.6m (Schools).

The balances available at 31 March 2010 are estimated at £11.6m (General Fund) and £7.6m (Schools).

Efficiency information

Councils and Fire Authorities are required to have regard to economy, efficiency and effectiveness in their actions. An efficiency saving occurs when the cost of an activity falls, but its effectiveness is not reduced. By the end of March 2009, efficiency savings achieved since April 2008 are forecast to be:

	By March 2009
London Borough of Islington	£21,025,000
London Fire and Emergency Planning Authority	£4,724,000

To put these figures into perspective the efficiency savings forecast to be achieved by March 2009 represent: 5.2% of the London Borough of Islington's spending in 2007/08, and 1.1% of the London Fire and Emergency Planning Authority's spending in 2007/08. The table below shows the value of gains forecast to be achieved by March 2009 for the average Band D dwelling and compares that figure with the average figure across London.

	Saving per band D dwelling	Average for Similar Authorities
London Borough of Islington	£255	£128
London Fire and Emergency Planning Authority	£2	£2

Section 4: Islington Council financial information

Explanation of the differences between 2008-09 and 2009-10

The increase of £5.5m in Islington's budget requirement between 2008-09 and 2009-10 is due to the following:

	£m
Net spending 2008-09	233.5
Inflation	7.3
Increase in other service levies	0.6
Growth in services	8.5
Efficiency and other savings	-14.3
Changes to provisions**	-0.5
Changes to contingencies	0.8
Other	3.0
Net spending 2009-10	239.0

**Provisions are money set aside to meet expected liabilities, eg insurance costs and bad debts.

Other services you contribute to

Other services are payments to London-wide bodies such as the Environment Agency, London Pension Fund Authority and the North London Waste Authority.

Charging organisations	2008-09	2009-10
	Charge to Islington £000	Charge to Islington £000
Lee Valley Regional Park Authority	255	259
London Boroughs Grants Scheme	650	654
London Pensions Fund Authority	1,294	1,661
North London Waste Authority	6,709	7,574
Environment Agency (Thames Region)	168	169
Concessionary Fares (Freedom Pass)	5,551	4,942
Inner London North Coroners Court	278	256
Traffic and Control Liaison Committee	243	256
Total	15,148	15,771



“The council gave us a lovely new kitchen. We're very pleased. It's made things a lot easier.”
Angel resident
Iris Hutchings

Every resident deserves a decent place to call home. To help make this goal a reality, we spent £75m renovating and rebuilding council homes last year.

Greater London Authority (GLA)

GREATERLONDONAUTHORITY

Introduction

Boris Johnson's first budget delivers on his key objectives of delivering value for London's 3.2m council taxpayers while continuing to invest in Londoners' priorities, such as tackling knife crime, improving local green spaces and public transport.

Over £100m of efficiency savings have been identified which will enable the Mayor to **freeze the GLA element of council tax bills** for residents of the 32 boroughs at the same level as last year. This will release resources for services to improve Londoners' quality of life and the city's economic well being.

The budget will maintain investment in front line policing levels and public transport, and provide new investment in local green spaces and measures to tackle youth crime. Additional resources are also being invested in measures to help Londoners through the recession and firmly position London to prosper in the future.

Council Tax and Budget Information

The GLA's council tax for 2009-10 is set out below.

Council Tax	2008-09	Change	2009-10
GLA	30.15	-0.65	29.50
MPA (Police)	227.02	-2.68	224.34
LFEPA (Fire)	50.46	2.95	53.41
TfL (Transport)	4.09	-0.03	4.06
Collection Funds	-1.90	0.41	-1.49
Total Band D amount (£)	309.82	0.00	309.82

Text supplied by the Greater London Authority (GLA)

A band D council tax payer in the City of London – which has its own police force – will pay **£85.48**.

The tables below provide information on reasons for the changes in the overall budget and the key funding sources for the GLA including council tax.

Changes in spending	£m
2008-09 Budget requirement	3,148.6
Inflation	310.1
Efficiencies and other savings	-104.4
Growth for existing services and new initiatives	262.5
Other changes (including income growth)	-518.2
Planned movements in reserves, working capital and borrowings	105.2
2009-10 Budget requirement	3,203.8

How the budget is funded	£m
Gross Expenditure	12,232
Fares, charges and other income	-4,200
Government grants for specific purposes	-4,016
General Government grants and redistributed business rates	-2,285
Paid out of reserves (TfL)	-805
Paid out of reserves (other bodies)	-7
Surplus in the council tax collection fund	-4
Amount met by council tax payers	915

Investing in Front Line Services Streamlining City Hall and Cutting Waste

Across the GLA group efficiency savings will rise to £1bn by 2012 and allow extra resources to be directed to front line services and deliver the Mayor's commitment to make the GLA's element of Londoners' council tax bills more affordable. This includes £9m from cutting waste and controlling costs at City Hall. Savings will help fund investment in key priority areas such as improving London's parks and open spaces, four Rape Crisis Centres and delivering 50,000 more affordable homes over the next three years.

Section 5: Information about other agencies

Policing

Crime and safety is the one of the biggest issues for Londoners and next year's budget will ensure resources are directed to allow police to spend more time out on the beat to provide visible reassurance to the public and to tackle key issues such as knife crime and youth violence.

There will also be a greater focus on making local neighbourhoods safer using smarter problem solving and partnership working to reduce drug related crime, anti-social behaviour and road casualties. Five hundred more uniformed officers will also be deployed on the bus network over the next three years and at outer London rail stations to reduce both the incidence and fear of crime.

Improving Skills and the Environment

The London Development Agency (LDA) will play a key role in providing skills training and apprenticeships to improve the lives of young people. It will also invest £18m to reduce carbon emissions and expand green skills.

London's Transport System

Tough choices have had to be made to ensure that transport spending plans are realistic and resources are invested in schemes which can be afforded.

The budget secures investment for a number of improvements to the transport network being delivered over the next three years including:

- + completing the Jubilee, Northern and Victoria line upgrades increasing capacity and reliability
- + rolling out Oystercard pay as you go on the national rail network in London by autumn 2009
- + completing the East London line extension to Dalston and West Croydon by summer 2010
- + increasing reliability, security and capacity on London Overground and the DLR
- + completing the first phases of the East London and Greenwich waterfront bus transit schemes
- + leading a revolution in walking and cycling, including the creation of a further 66,000 cycle parking spaces, a cycle hire scheme in central London and enhancing cycle routes. Spending on cycling will more than double in 2009-10 to £111m.

Section 5: Information about other agencies

The Mayor has already delivered on his commitment to provide free 24 hour travel for over 60s and injured war veterans and half price bus fares for those on income support and job seekers allowance.

Work will also commence on the £15.9bn Crossrail scheme which is due for completion by 2018.

2012 Olympics and Paralympics

The amount to be raised through the council tax precept for the 2012 Olympic and Paralympic Games remains at £20 a year for a band D household – delivering on the Mayor's commitment that this will not increase over its lifetime. Raising the required £625 million will require the £20 at band D for 6 more years and £9 in the final year, 2016-17.

The GLA will play an integral role in ensuring the benefits of the Games are seen London-wide through improving skills and increasing sports participation.

Security, safety and resilience arrangements for the Games are being co-ordinated by the Metropolitan Police and LFEPA using Government funding.

Fire and Emergency Planning

LFEPA's budget will build on recent successes in reducing fires and fire deaths, as well as hoax calls, and support its vision of being a world class fire and rescue service for Londoners.

The budget provides for a new fire station in Havering in 2010 and funding to secure the investment necessary to replace up to 10 fire stations. In partnership with London's borough councils LFEPA will work to ensure that smoke alarms and sprinkler systems are fitted in the homes of the most vulnerable Londoners. Provision is made to ensure the safety of major new developments, undertake preparations for the 2012 Olympics and maintain resilience to respond to catastrophic acts or terrorism.

Section 5: Information about other agencies

Summary of GLA Group Budget

The table below compares the GLA group's expenditure by functional body in 2009-10 with the previous year. Overall the budget requirement (funded from general grants and council tax) will increase by 1.7% – below the rate of inflation.

£m	MPA		LFEPA		TfL	
	2008-09	2009-10	2008-09	2009-10	2008-09	2009-10
Gross expenditure	3,510.8	3,603.1	453.4	463.4	6,821.0	7,594.0
Specific grants	-613.6	-564.6	-8.3	-10.5	-2,649.0	-3,036.0
Other income	-302.2	-398.2	-19.8	-21.1	-3,547.0	-3,741.0
Net expenditure	2,595.0	2,640.3	425.3	431.8	625.0	817.0
Reserves	-	-	-20.2	-15.6	-613.0	-805.0
Budget requirement	2,595.0	2,640.3	405.1	416.2	12.0	12.0

£m	LDA		GLA		Total	
	2008-09	2009-10	2008-09	2009-10	2008-09	2009-10
Gross expenditure	406.7	431.3	153.7	139.9	11,345.6	12,231.7
Specific grants	-389.7	-405.1	-0.6	-	-3,661.2	-4,016.2
Other income	-17.0	-26.2	-15.3	-12.8	-3,901.3	-4,199.3
Net expenditure	0.00	0.00	137.8	127.1	3,783.1	4,016.2
Reserves	-	-	-1.3	8.2	-634.5	-812.4
Budget requirement	Nil	Nil	136.5	135.3	3,148.6	3,203.8

More information on the budget is available on the GLA website at www.london.gov.uk (tel: 020 7983 4000).

Section 5: Information about other agencies

The London Pensions Fund Authority

Council tax information 2009-10

The London Pensions Fund Authority (LPFA) raises a levy each year to meet expenditure on premature retirement compensation and outstanding personnel matters for which LPFA is now responsible and cannot charge to the pension fund. These payments relate to former employees of Greater London Council (GLC), the Inner London Education Authority (ILEA) and the London Residuary Body (LRB).

For 2009-10, the income to be raised by levies is set out below. The Greater London levy is payable in all boroughs, the Inner London levy only in Inner London Boroughs (including the City of London). These figures show the total to be raised and, in brackets, the percentage change on the previous year.

Inner London Borough of Islington	£12,689,000	(-0.7%)
Greater London Borough of Islington	£11,988,000	(-3.1%)
Total	£ 24,677,000	(-1.2%)

The LFPFA also manages the pension fund for the former employees of the GLC, ILEA and the LRB. The actuary has projected a deficit on this fund, mainly because of increases in pensioners' life expectancy. A charge has therefore been raised to fund this deficit, as follows:

Greater London Borough of Islington	£7,000,000
-------------------------------------	------------

Text supplied by the London Pensions Fund Authority

Lee Valley Regional Park Authority

The Council Tax and Non-Domestic Rating (Demand Notices) (England) Regulations 2003 (as amended). The Lee Valley Regional Park Authority was established by an Act of Parliament in 1966 to regenerate, develop and manage approximately 10,000 acres of the Lee Valley, which had become largely derelict, and transform it into a unique leisure and nature conservation resource for the benefit of Hertfordshire, Essex and London.

Budget/Levy Changes – 2008/2009 to 2009/2010 (£'000)

	2008-09 £m	2009-10 £m
Gross Operating Expenditure	14.1	14.7
Gross Operating Income	(5.3)	(5.6)
Net Service Operating Costs	8.8	9.1
Financing Costs - Debt servicing/repayments	0.7	0.7
- New capital investment	2.6	2.5
Total Net Expenditure	12.1	12.3

Further details on how this budget is spent and the amount each council contributes can be found at www.leevalleypark.org.uk

Environment Agency Thames Region

The Council Tax and Non-Domestic Rating (Demand Notices) (England) Regulations 2003 (as amended)

The Environment Agency, as a levying body for its Flood Defence functions, under the above regulations, provides the following information.

The Environment Agency has powers in respect of flood defence along 5,200 kilometres of main river and along tidal and sea defences, in the area of the Thames Regional Flood Defence Committee. Flood defence money is spent on the construction of new flood defence schemes, the maintenance of the river system and existing flood defences together with the operation of a flood warning system. The financial details are:-

Thames Regional Flood Defence Committee	2008-09 000's	2009-10 000's
Gross Expenditure	£88,357	£96,798
Levies Raised	£10,000	£10,000
Total Council Tax Base	£4,952	£4,988

The majority of funding for flood defence comes directly from the Department for the Environment, Food and Rural Affairs (Defra). However, where there are schemes which do not attract central funding, the Agency may seek funding from County and Metropolitan Councils, Unitary Authorities and London Boroughs in the form of a Local Levy. The Local Levy is shared on the basis of Band D Equivalents between all contributing bodies within the Committee Area.

Changes in the Gross Budgeted expenditure between the years is due mainly to increased amounts of grant in aid.

The total Local Levy raised has remained the same from £10,000,000.00 in 2008/09 to £10,000,000.00 for 2009/10.

If you would like this document in large print or Braille, audiotape or in another language, please contact 020 7527 2000.

Bengali

যদি আপনি এই তথ্য গুলো আপনার নিজ ভাষায় পেতে চান, তাহলে দয়া করে 020 7527 2000 নম্বরে যোগাযোগ করুন।

Chinese (Traditional)

如果你想要這資料的中文本, 請致電 020 7527 2000 聯繫。

Somali

Haddii aad jeclaan lahayd macluumaadkan oo ku qoran luqadaada fadlan la xidhiidh 020 7527 2000

Turkish

Buradaki bilgilerin Türkçesini istiyorsanız, lütfen 020 7527 2000 numaraya telefon edin.

Council tax

Revenues and Benefits, PO Box 34750, London N7 9WF

E council.tax@islington.gov.uk

T 020 7527 2633

W www.islington.gov.uk/counciltax