



Montem and Samuel Rhodes Primary Schools

Improvements to the environment on Hornsey Road and new northbound cycleway

Consultation results and next steps



Dear resident or business,

We're delighted to let you know that we'll soon be making improvements outside Montem and Samuel Rhodes Primary Schools on Hornsey Road to help make it a safer, more environmentally-friendly and welcoming area for all.

The improvements will be delivered as part of our School Streets programme, which seeks to reduce road danger, make it easier for children to walk, cycle and scoot to school, and improve air quality.

Due to their location, it is not possible to introduce traffic restrictions outside Montem and Samuel Rhodes Primary Schools. To help create a greener and more attractive space for children and local people, we proposed a range of improvements, such as outdoor seating, pavement widening, and greenery.

So that you could have your say, we held a public consultation on these changes and the introduction of a northbound cycleway on this section of Hornsey Road, earlier this year.

Having listened to your feedback, we're introducing a range of improvements to the area, which are detailed in the following pages.



To view the full consultation report, **visit our website or scan the QR code** with your phone to access

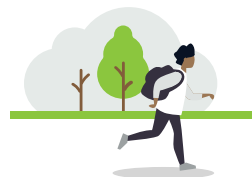
[www.islington.gov.uk/
SchoolStreetsConsultation](http://www.islington.gov.uk/SchoolStreetsConsultation)

Yours sincerely,

A handwritten signature in black ink, appearing to read 'R. Champion', written in a cursive style.

Councillor Rowena Champion

Executive Member for Environment, Air Quality and Transport



Key findings from the consultation

We first engaged with local people, businesses and the school community in September 2022, where we asked people about the current issues with the street environment outside the school and what sort of measures could improve it.

Using this feedback, we developed designs for Hornsey Road and we held a public consultation on these designs from Monday, 23 January to Sunday, 19 February 2023.

We received 85 responses to the public consultation survey, including 69 responses from local residents. We also delivered a workshop with pupils from the school to understand their views.

Overall, consultation responses for the improvements and northbound cycleway showed support for the proposals:



79% of respondents agreed it will **make it safer and easier to travel by walking, wheeling and cycling**



79% of respondents agreed it will **make the area more pleasant**



75% of respondents agreed it will **improve road safety in the area**



63% of respondents agreed it will **encourage them to cycle more.**

The most popular improvements for Hornsey Road with pupils at the workshop delivered at the school were:

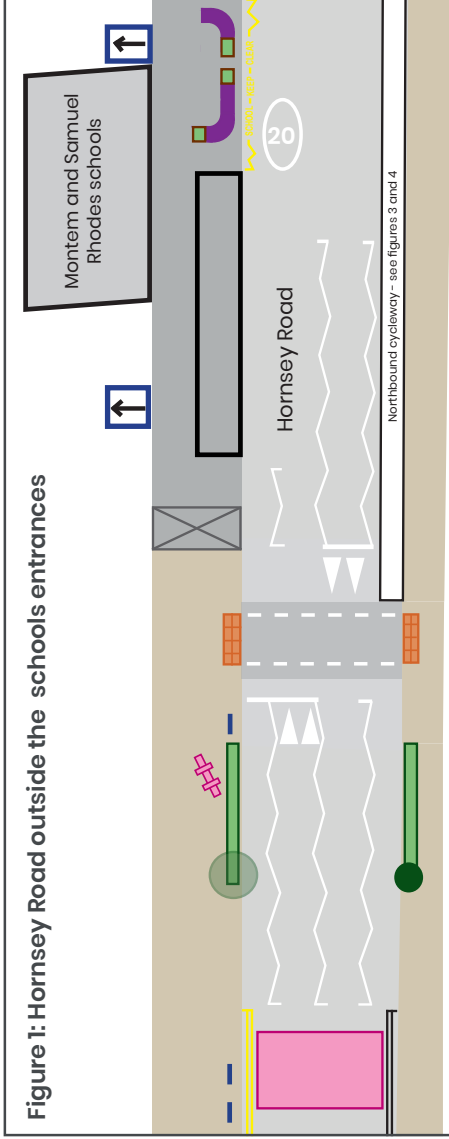


colourful artwork on the road with all pupils 'very much' wanting to see colourful artwork on Hornsey Road



new cycleway with the majority of pupils positive about the cycleway as they wanted to cycle to school more.

Diagrams showing improvements to the environment on Hornsey Road



Diagrams key



School entrances



Existing tree



New seating with planting



New trees



New greening



New cycle parking



Colourful artwork on the road and pavement



Widened pavements



Existing school bus bay raised and inset into the new pavement



New tactile paving to alert people to the crossing



Continuous footway at school entrances

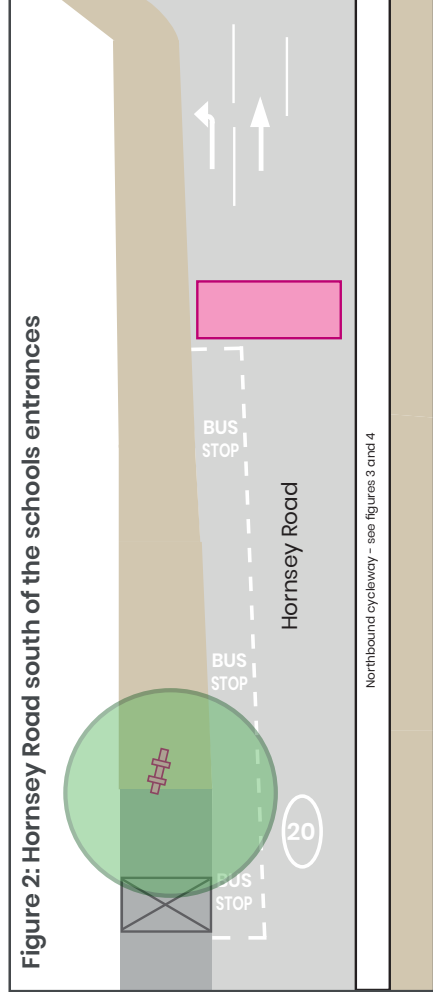


Figure 2: Hornsey Road south of the schools entrances

How we plan to transform the environment on Hornsey Road

We will be introducing the following improvements outside Montem and Samuel Rhodes Primary Schools on Hornsey Road to improve the environment:



colourful artwork on the road outside the school to make drivers aware of the school and encourage them to slow their speed



cycle parking stands to make it easier for families to cycle or scoot to school



new greening to include trees and low level planting beds to create a nicer environment and provide a separation between the road and pavement



seating to provide space for parents, families and local people to sit, rest and chat



raise the existing signalised pedestrian crossing to pavement level, to slow down traffic and make it easier for people to cross safely



raise the existing school bus waiting area to pavement level to discourage illegal parking



widening the pavement outside the schools entrances, moving traffic and its emissions further from the school gates and improving air quality





creating a continuous footway across the school entrances which will give greater priority to people walking over vehicles.

You can see a diagram of the improvements we will be making on the previous page (figure 1 and figure 2).

Diagram showing new northbound cycleway

Diagrams key

-  New raised cycleway
-  New wand protected cycleway (Cycleway colours not indicative)




-  New cycleway wands
-  New loading bay
-  New raised crossing
-  Proposed removal of total 5 parking bays

Figure 3: Northbound cycleway from the junction of Seven Sisters Road

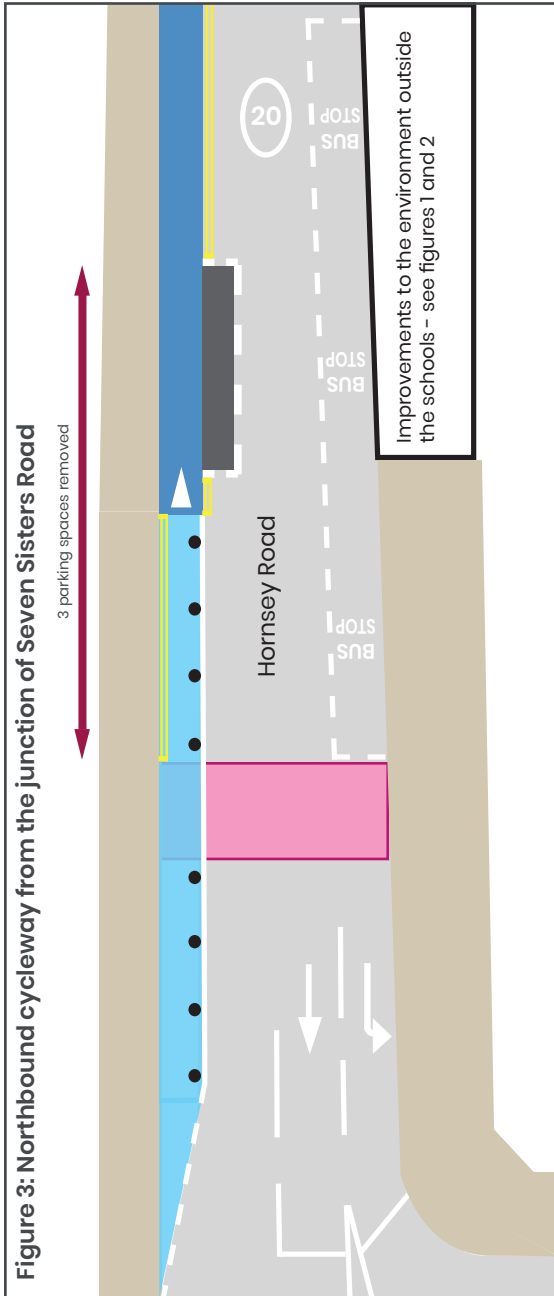
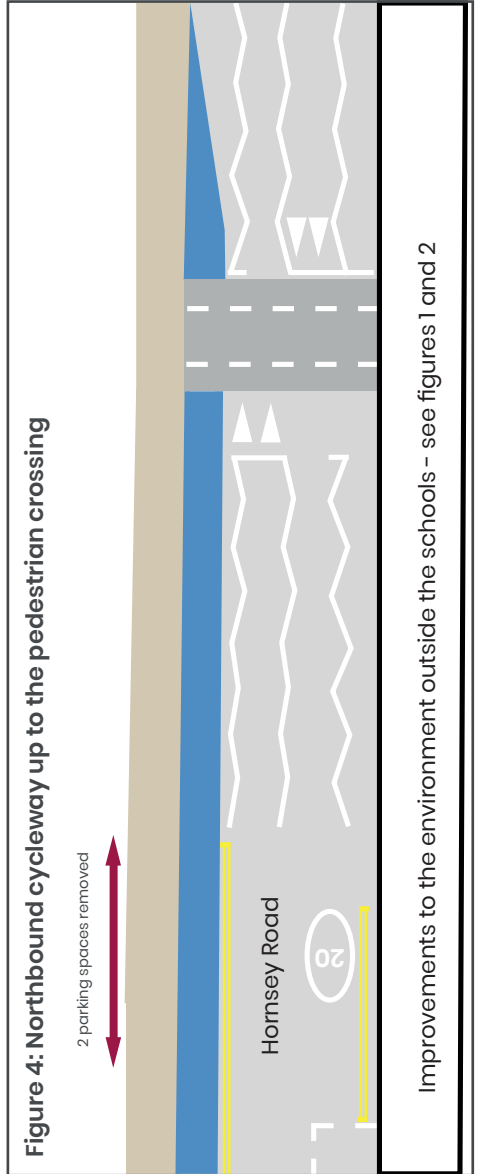


Figure 4: Northbound cycleway up to the pedestrian crossing



How we plan to improve cycling on Hornsey Road

Having listened to your feedback about making it easier for all to cycle, we're introducing a new section of cycleway on Hornsey Road between the junction of Seven Sisters Road to Tollington Way.

The first phase of the northbound cycleway will be from the junction of Seven Sisters Road to the pedestrian crossing outside Montem and Samuel Rhodes Primary Schools. This is the next step in the council's ambitions to create a safer cycling network in this area.

The new cycleway will consist of:



36 metres of **wand protected cycleway** (a plastic post that separates people cycling from traffic)



74 metres of **raised cycleway** at the same level of the footpath. The raised cycleway and footpath will be separated by a special kerb to ensure safety for both people cycling and walking



the cycleway will be a **minimum width of 1.5 metres**.

To deliver the new cycleway and enable a dedicated cycle lane, we will be required to:

- remove 5 parking spaces on Hornsey Road. You can see the location of the parking spaces on figures 3 and 4 on the previous page
- introduce a new loading bay for businesses on the south of Hornsey Road
- introduce new double yellow lines along the length of the raised cycleway to prevent illegal parking and ensure traffic continues to flow.

We are in the process of developing our plans for the section of northbound cycleway from the pedestrian crossing to the junction of Tollington Way. We are working to take on board the valuable feedback we received during the consultation and carry out further road safety assessments.



Next steps for Montem and Samuel Rhodes Primary Schools



Works to enable the improvements and new section of cycleway on Hornsey Road

Works to install the improvements on Hornsey Road are scheduled to **start on Monday 24 July** and will take approximately **ten weeks to complete**. Hornsey Road will not be closed to traffic but will be reduced to a single traffic lane for some stages of the construction process.

We will also be suspending some parking bays during the works to enable them to happen safely. Signs will be put up in the area to advise which parking bays will be suspended and residents will receive a letter with further information on the works.

We're proposing to implement the improvements on a permanent basis from July 2023. We will be doing this under a Traffic Management Order (TMO), which is subject to a statutory consultation.

To make an objection to the TMO, please send it in writing to us between **23 June to 14 July 2023** by:

Email: environment@islington.gov.uk

Post: **Public Realm, 1 Cottage Road, London, N7 8TP.**

Please note that any formal objection that is submitted may become a public document and could be published. We will continue to monitor the area outside Montem and Samuel Rhodes Primary Schools and welcome feedback from local people.

Get in touch

To find out more about our School Streets programme please visit: www.islington.gov.uk/SchoolStreets

Do you need this information in another language or reading format such as Braille, large print, audio or Easy Read?

Please contact us at SchoolStreets@islington.gov.uk or write to: **Public Realm, 1 Cottage Road, London, N7 8TP.**