

**Current Canonbury Primary School entrance environment:**



**Image: Canonbury Primary school entrance on Canonbury Road**

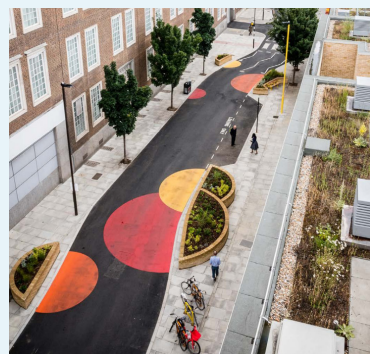
**Examples of proposed environmental improvements:**



**Image: Footway widening and greening**



**Image: Seating and cycle parking**



**Image: Colourful carriageway elements**



**Image: Wall climbing pollutant absorbent plants**

Source for images: LBI



We would like to hear what you think of our proposed environmental improvements at Canonbury Primary School. You'll find out more at [www.islington.gov.uk/SchoolStreets](http://www.islington.gov.uk/SchoolStreets)



To find out more about our School Streets programme please visit [www.islington.gov.uk/SchoolStreets](http://www.islington.gov.uk/SchoolStreets) where you will also find answers to frequently asked questions. If you have further questions, drop us a line at [SchoolStreetsConsultation@islington.gov.uk](mailto:SchoolStreetsConsultation@islington.gov.uk)

Do you need this information in another language or reading format such as Braille, large print, audio or Easy Read? Please contact us at [SchoolStreetsConsultation@islington.gov.uk](mailto:SchoolStreetsConsultation@islington.gov.uk) or write to: **Public Realm, 1 Cottage Road, London, N7 8TP.**

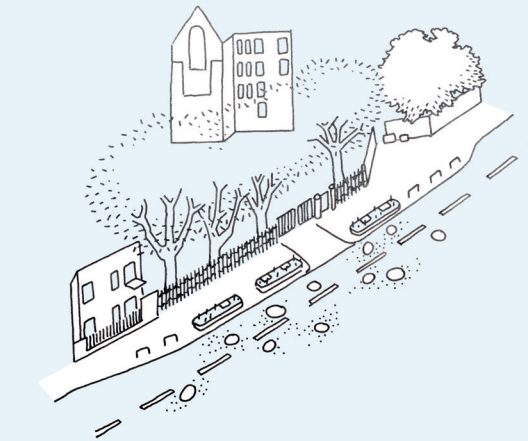


# Canonbury Primary School

## Canonbury Road environmental improvements

### Consultation now open

Have your say between Monday 13 December 2021 and Sunday 16 January 2022



## Dear resident,

As part of our commitment to make our streets cleaner, greener and healthier, we are proposing to deliver environmental improvements at Canonbury Primary School on Canonbury Road.

We want to hear from your school community, local people, and businesses about our proposals to improve space around Canonbury Primary School on Canonbury Road.

## Our School Streets programme so far

The first School Street in Islington was introduced in 2019 in response to increased traffic levels and pollution outside school gates. We wanted to create a calmer, safer, and cleaner environment around our schools.

School Streets aim to:

- improve air quality at the school gates
- reduce road danger, making it safer for children to get to and from school
- make it easier for children, and their parents and carers, to be more active on their way to school by walking, scooting or cycling

To this day, we have introduced 36 School Streets, covering 37 primary schools across Islington. However, there are a number of primary schools located on main roads where it has not been possible to introduce camera-enforced School Street interventions.

## Canonbury Primary School

To build on the success of the School Streets programme, the council is starting to deliver main road environmental improvements. Canonbury Primary school, and specifically the Canonbury Road entrance, has been selected as a priority school for investment from the council in the first year of the programme.

As this main road is key to the local transport system, we will not be temporarily closing the street to traffic at drop-off and pick-up times. Instead, the greening measures and footway improvements will increase space between the road and school entrance, creating a safer and healthier environment.

## Proposed changes to Canonbury Road

To improve air quality at the school gates, the council is proposing to **widen the footway** outside the school, moving traffic and its emissions further from the school gates.

We are also proposing to introduce **new greening measures** including planters.

The wider footways and new planters will make it safer for children, their parents and carers, by providing separation between traffic and pedestrians.

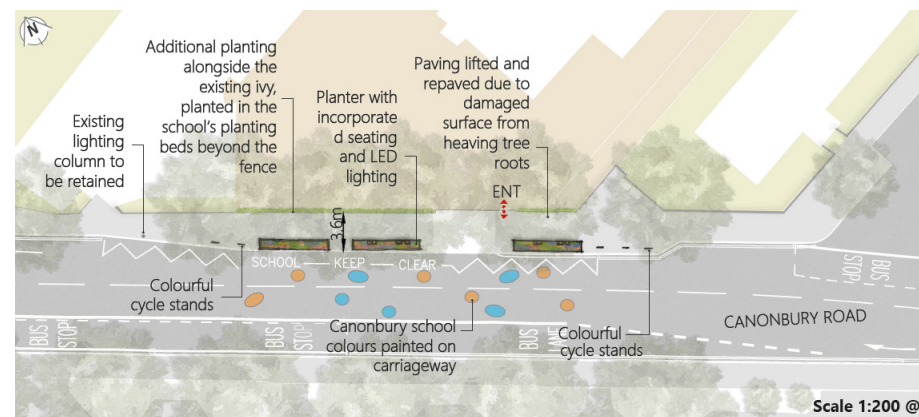
To make it easier for people to be active on their way to and from school, we are proposing to install **new cycle stands** for both bicycles and scooters, as well as **seating** to allow people to rest and interact with the local community.

**Plans showing existing street layout and proposed improvements are below.**

### Existing street layout



### Proposed street layout



## We welcome your feedback

We want to know what you think of the proposed environmental improvement plans.

Scan the QR code below with your phone to access to the consultation questionnaire, or visit [www.islington.gov.uk/SchoolStreetsConsultation](http://www.islington.gov.uk/SchoolStreetsConsultation)



**Submit your response before 11:59pm on Sunday 16 January 2022** when the consultation period ends.

If you would like a hard copy (paper copy) of the questionnaire, please:

- write to: Public Realm, 1 Cottage Road, London, N7 8TP.
- visit us at Islington Town Hall reception (N1 2UD) to fill in a paper copy.

**Come and speak to us** at Canonbury Primary School entrance on Canonbury Road on **Tuesday 11 January 2022, 9am - 4pm.**

**Thank you for taking part and we look forward to hearing your views.**

Yours sincerely,

**Councillor Rowena Champion**  
Executive Member for Environment and Transport

