

# 10 Central Activities Zone

10.1 No changes are proposed to Islington's Central Activity Zone boundary as part of the review of the Local Plan.

# 11 Adventure Playgrounds

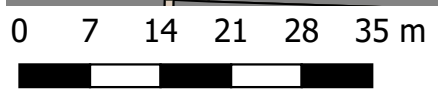
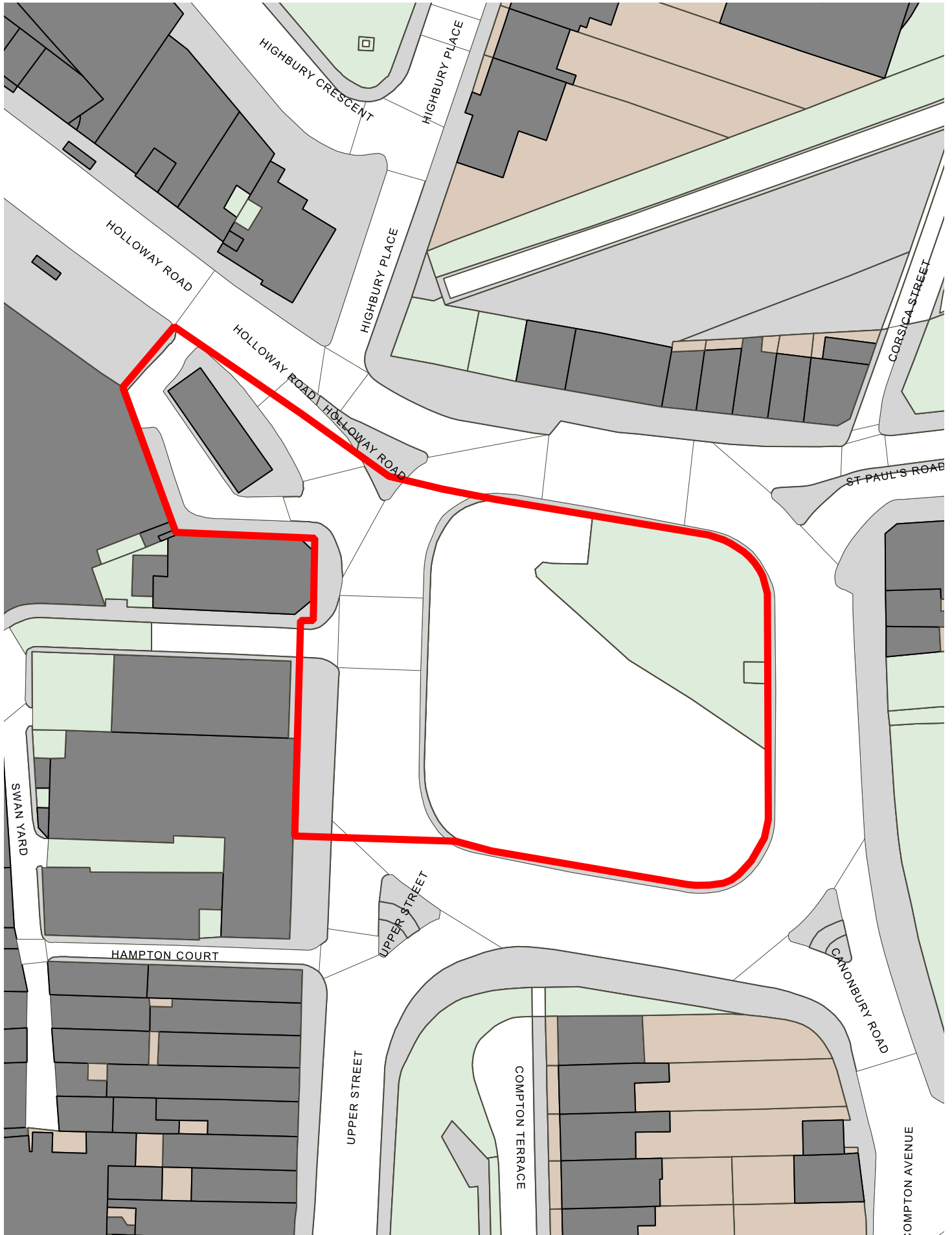
11.1 Adventure Playgrounds are currently designated in the DMP DPD, adopted in 2013. No changes are proposed to these designations as part of the review of the Local Plan.

# 12 Open Space

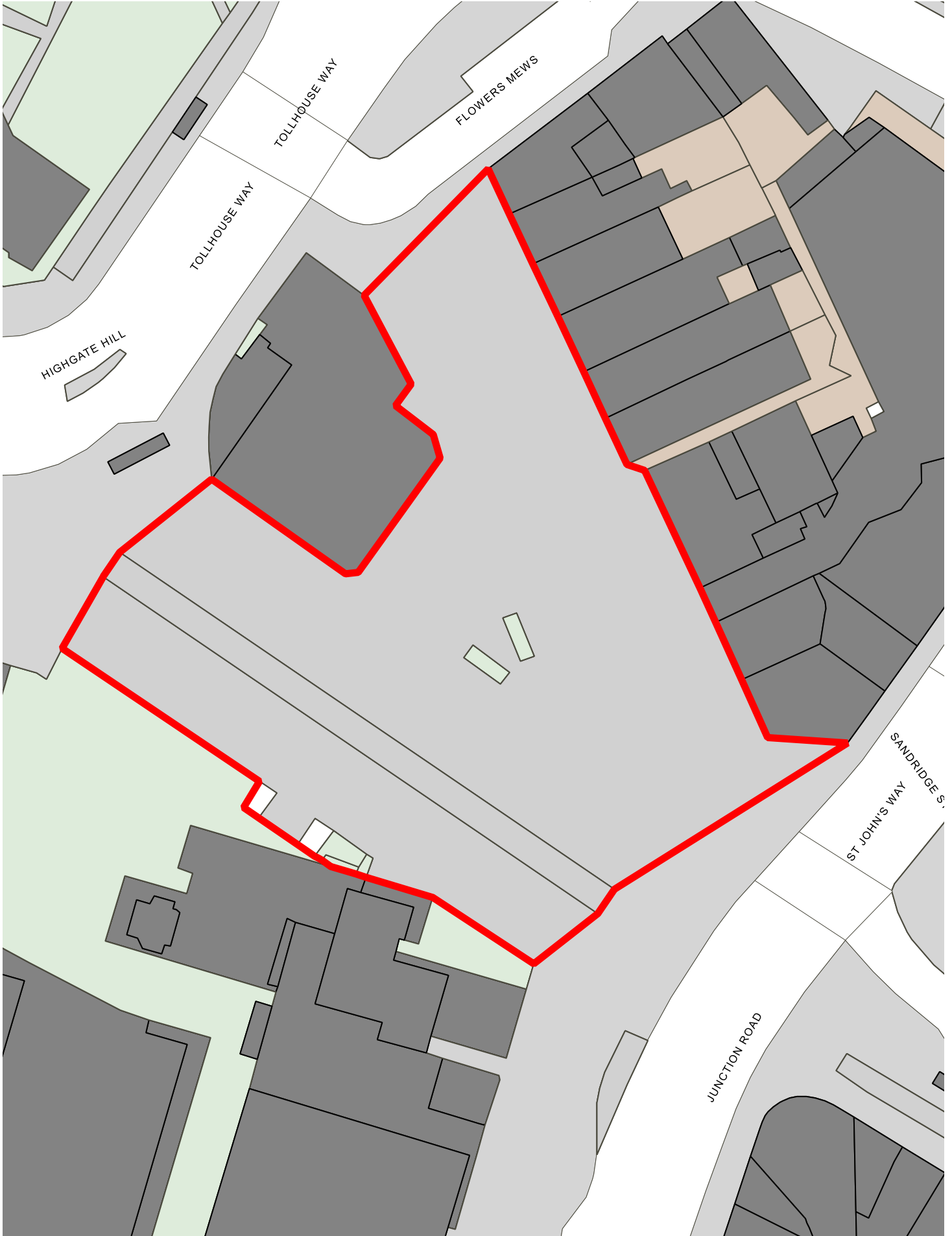
12.1 Current Open Space boundaries are designated in the DMP DPD adopted in 2013.

12.2 The draft Local Plan – Strategic and Development Management Policies document, policy G2, identifies Open Spaces. Two new Open Spaces are proposed, at Highbury Corner and Navigator Square in Archway; these are shown on the maps below. These proposed designations reflect open spaces created (or due to be created) following gyratory improvements.

# Highbury Corner Open Space Proposed Boundary



# Navigator Square Open Space Proposed Boundary



0 5 10 15 20 25 m



Contains OS data © Crown copyright and database right 2018

# 13 Sites of Importance for Nature Conservation (SINC)

- 13.1 Current SINC boundaries are designated in the DMP DPD adopted in 2013.
- 13.2 The draft Local Plan – Strategic and Development Management Policies document, policy G4, reflects the adopted SINC boundaries. The council is currently undertaking a study to inform SINC boundaries in the Local Plan Review, including potential new SINC. The SINC boundaries shown in the draft Local Plan may be subject to change depending on the outcome of the study.

# 14 Metropolitan Open Land

- 14.1 Islington has two Metropolitan Open Land designations – Highbury Fields and Parkland Walk. These are currently designated in the DMP DPD, adopted in 2013. No changes are proposed to these designations as part of the review of the Local Plan.

# 15 Rail Safeguarding Area

- 15.1 The adopted Policies Map identifies Rail Safeguarding Areas, which are areas protected (through a legal Direction) for the potential future construction of rail infrastructure. Planning applications within rail safeguarding areas must consult relevant bodies to assess whether the application will have an impact on future infrastructure plans.
- 15.2 Government guidance<sup>1</sup> suggests that where a Safeguarded Direction is taken into account in a Local Plan, it should be represented on the adopted policies map. The draft Local Plan does not take any Safeguarded Directions into account, i.e. there are no policies which relate to a Direction. Therefore, it is not necessary to represent Rail Safeguarding Areas on the Policies Map.
- 15.3 It is important to note that the requirements of the Directions apply regardless of whether the safeguarded area is identified on the adopted policies map.

---

<sup>1</sup>[https://assets.publishing.service.gov.uk/government/uploads/system/uploads/attachment\\_data/file/737340/hs1-safeguarding-directions-guidance-notes-for-local-planning-authorities.pdf](https://assets.publishing.service.gov.uk/government/uploads/system/uploads/attachment_data/file/737340/hs1-safeguarding-directions-guidance-notes-for-local-planning-authorities.pdf)

# 16 Cycling Routes

16.1 The Policies Map and Appendix 6 of the adopted DMP DPD identifies the borough's cycle network, to highlight priorities for off-site investment. The draft Local Plan does not continue this designation, as it does not serve any practical planning purpose.

# 17 Local Views and Protected Vistas

17.1 Policy DM2.4 and Appendix 1 of the DMP DPD identify Local Views; strategic views (protected vistas) are identified on the Policies Map. No changes to any views are proposed as part of the Local Plan review. However, there are several minor corrections to current local views mapping that needs to be undertaken, to ensure that the maps reflect the actual views. The next iteration of the draft Local Plan (Regulation 19) will include details of all views.

# 18 Scheduled Monuments

18.1 Islington has two Scheduled Monuments. These are currently designated in the DMP DPD, adopted in 2013. No changes are proposed to these designations as part of the review of the Local Plan.

# 19 Conservation Areas

19.1 The adopted Policies Map shows conservation areas, although they are not themselves a plan designation. There have been changes to conservation areas since the Local Plan was adopted, namely a revision to one conservation area and the designation of a new conservation area. Further information can be found on the council's design and conservation [webpage](#).

# 20 Local Landmarks

20.1 The DMP DPD, adopted in 2013, identifies 18 Local Landmarks, and protect views of these landmarks. No changes are proposed to Local Landmarks as part of the review of the Local Plan.

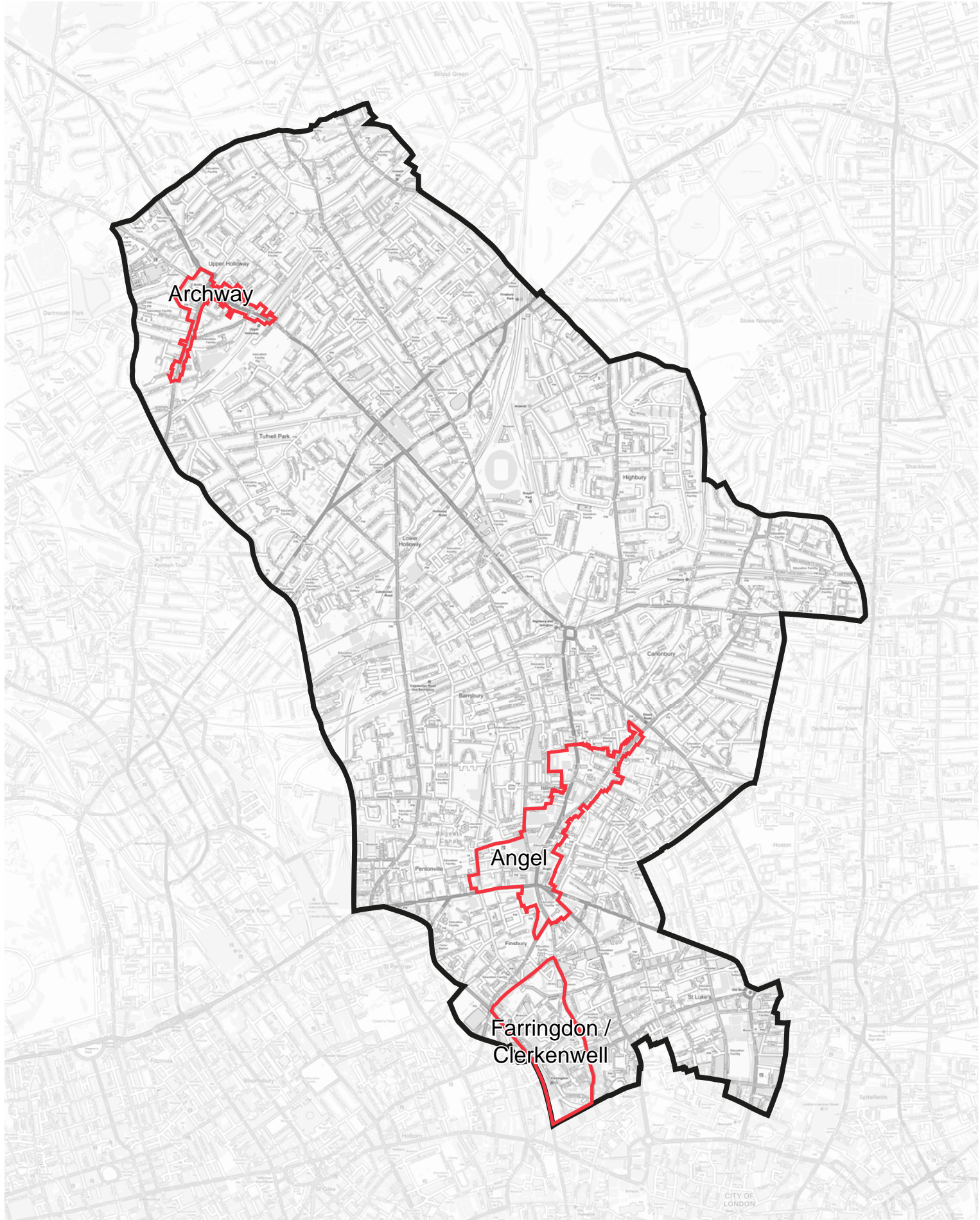
## **21 Archaeological Priority Areas**

21.1 The DMP DPD, adopted in 2013, identifies Archaeological Priority Areas (APA), which are locations which may contain important archaeological remains. The Council is currently working with Historic England to update APA boundaries. The next iteration of the draft Local Plan (Regulation 19) will include revised APA boundaries.

## **22 Cultural quarters**

22.1 The draft Local Plan – Strategic and Development Management Policies DPD and the Bunhill and Clerkenwell AAP, policy BC2 identify cultural quarters where cultural uses will be protected and promoted. These new designations are shown on the map below.





Cultural Quarters



0 metres 500 1000 2000

Contains OS data © Crown copyright and database right 2018