

Vorley Road new build update

December 2020

We are building much-needed new council homes, a GP surgery and a new public library on Vorley Road. The Adult Community Services Centre that previously occupied this space has been moved to a new location and the bus depot has been removed.

We are also planning to make improvements to the public spaces by the new homes, GP surgery and library on Vorley Road and at Girdlestone Park.

This newsletter explains what we are proposing to build. We are holding an online consultation event for you to attend and find out more about our proposals and ask any questions you may have.

The online consultation event will take place on:
Tuesday 15 December 12.30 - 2pm
Wednesday 16 December 6.30 - 8pm

This is the same event run on different days to allow as many people as possible to attend.

To confirm your attendance at either event and receive the joining details, please email or phone the Assistant Project Manager, Jojo Junju at Muhmoud.Junju@islington.gov.uk or **020 7527 6986**.

Please keep hold of this newsletter for the meeting, as it will allow you see our plans and help you when giving us feedback.

This map shows where the new homes, GP surgery and library will be built



Priority for local people

Local residents get priority for the new council homes. Under Islington Council’s local lettings policy existing ward tenants and family members who meet the local lettings criteria qualify.

Priority is given to those looking to downsize, living in overcrowded properties, or who have needs that are not being met in their current homes. For more information, visit our website: www.islington.gov.uk/housing

What we are proposing to build:

- 72 new homes, of which 36 are much needed council homes for Islington residents
- a new two-storey library opposite Girdlestone Park
- a new GP surgery (subject to obtaining approval from the General Practice and Planning department)

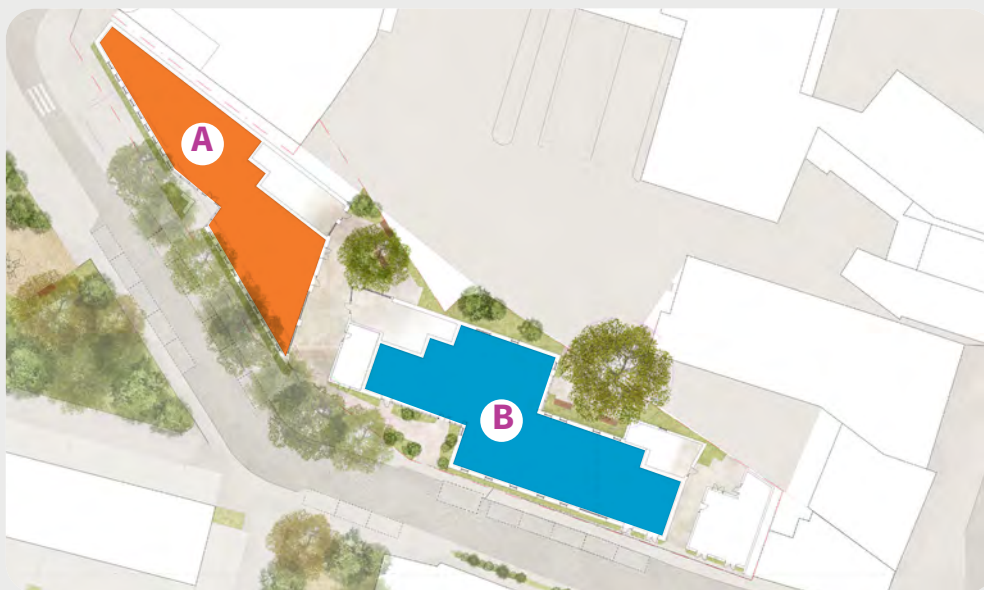
We are also planning to make improvements to the public spaces by the new homes, GP surgery and library on Vorley Road and at Girdlestone Park.



The library and GP surgery

As part of this project there will be a new public library (A). This will offer many services in a modern setting with views over the park. This will also include a community room offering different activities.

The new GP surgery (B) opposite the nursery will provide easily accessible medical services and include its own garden.



The library

The new library will provide a quiet space for people to visit. There will be an area for younger children to sit and read or take part in organised activities.

There will be computers and study spaces for older children and adults and spaces for adult learning classes.



Enfield Town Library - example of a new library with park views

The GP surgery

The new GP surgery will be able to offer its services in bright, modern facilities with an open waiting area looking out onto a garden.

All patient areas will be easily accessible on the ground floor and there is a separate area for staff on the first floor with office space for admin staff and staff welfare facilities.

From the street the entrance will be welcoming and spacious with new landscaping and planting.



Kentish Town Health Centre - example of new medical services

View of the library entrance on Vorley Road



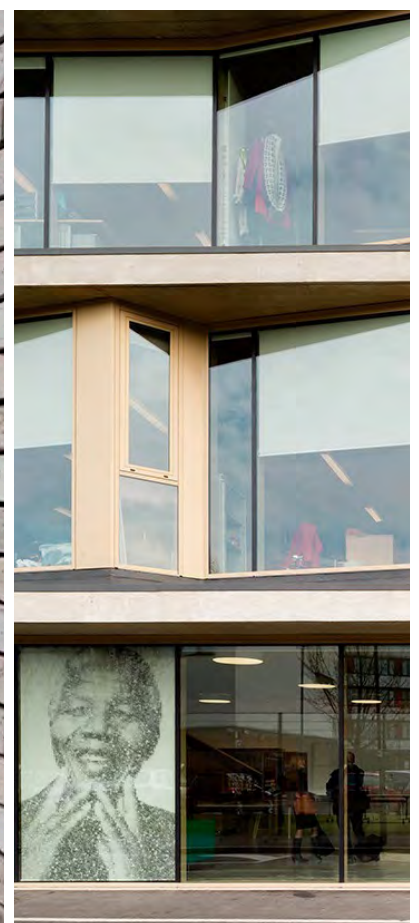
The entrance to the library will be opposite a newly improved play area in Girdlestone Park. We are keeping the existing trees along Vorley Road and improving the links between the leisure centre, library and park.



View of the entrance to the new homes with the library



Between the new library and GP surgery is the entrance to the new homes, shown above. A secure entrance accessed only by residents will be in place with views to the quiet courtyard garden and entrances beyond.



The building will be built out of bricks for the homes while the ground floor will be a mixture of concrete and glass

New energy efficient homes and zero carbon

The London Borough of Islington has declared a climate emergency and is publishing a detailed document 'Vision 2030' setting out the council's vision to address it.

The Vorley Road scheme is a 'Net Zero Carbon' pilot project for Islington. This means we are looking carefully at:

- How to make sure the building is as energy efficient as possible especially considering insulation and the amount of windows.
- How the homes will be heated to make sure they are cheap to run for residents and minimise carbon emissions.
- Using renewable energy including solar panels.
- How to minimise embodied carbon, looking carefully at what the building is made of to reduce this as much as possible.



Entrances to the homes and bike parking



Views to the park from inside the homes



Solid feeling balconies making the living spaces feel bigger

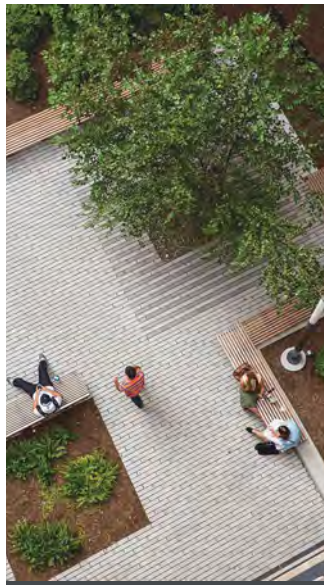
A secure neighbourhood

By placing uses like the library and GP surgery here, Vorley Road will not just be a place to pass by but a place to visit. By making the area more active there will be more people around making the area feel safer.



Improvements to the outside space

Changes have been made to Archway gyratory and Vorley Road to make this area easier to walk around. We will make further improvements to the public space with new paving and planting, better lighting and new seating. Let us know what improvements you would like to see via our feedback form.



New seating



Better lighting



New paving and planting

Improvements to Girdlestone Park

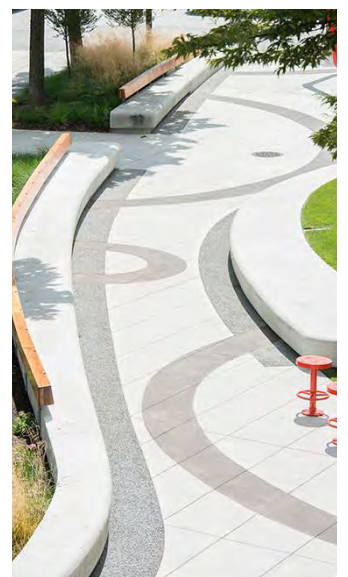
Improvements to the park will make it feel safer. We are looking at the play area and the sports court to see how these could be improved and connect better with the leisure centre, new library and children's centre. Let us know what improvements you would like to see via our feedback form.



Community growing



New play area



Better edge to the park

What happens next

Consultation event

Join us for an online Zoom consultation event on:

Tuesday 15 December 12.30 - 2pm

Wednesday 16 December 6.30 - 8pm

This is the same event run on different days to allow as many people as possible to attend. You can join this event by a landline, mobile phone, tablet or computer.

To confirm your attendance at either event and receive the joining details, please email or phone the Assistant Project Manager, Jojo Junju at Muhmoud.Junju@islington.gov.uk or **020 7527 6986**.

Feedback:

After the consultation event **please submit your feedback to us by 15 January 2021**. You can submit this feedback using the enclosed feedback form and posting this back to us, or via our website at www.islington.gov.uk/consultations, scroll down until you see Vorley Road consultation and click on this to access the feedback page.

Planning application submitted:

We hope to submit this in early 2021.



Send us your questions

If you have any questions about our proposals you can email these to us before the online consultation event and we will try and make sure these are answered at the event.

The contact details are in the 'How to get in touch' box.

How to get in touch

If you have any questions, please contact:

Nick Gore

Principle Development Project Manager,
Islington Council

📞 020 7527 8040

✉️ nicholas.gore@islington.gov.uk

If you would like this information in another language or reading format, such as Braille, large print, audio or Easy Read, please contact 020 7527 2000.

Published December 2020